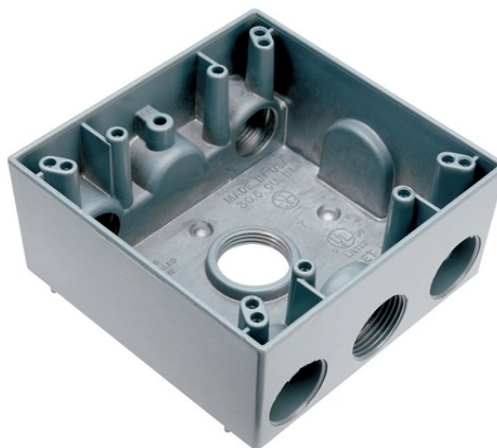


Weatherproof Two Gang Box, Gray

WPB342



Weatherproof 2 Gang Box, 4 hole 3/4", 30.5 Cu.In., Gray (2 Holes One End, 1 Hole Other End, 1 Hole in Back)

features & benefits

- Wide range of sizes, depths, and gangs.
- Baked-on electrostatic, polyester, powder paint for superior scratch and corrosion resistance.
- 2 closure plugs and mounting lugs furnished with all boxes.
- UL Listed for wet and/or damp locations with appropriate cover.
- Designed for both interior and exterior applications.
- Will accept standard 4 screw mounting covers and single gang weatherproof covers.
- Simply strike desired knockout studs with a sharp hammer blow for clean mounting holes.
- Heavy die-cast aluminum.

specifications

General Info

Color: Gray
Size: 2-gang
Type: Box
Special Features: Weatherproof

Listing Agencies/Third Party Information

CSA Listing Info: Yes
CUL Listing No: No
cULus: No
cURus: No

Federal Spec: No
UL Listing No: Yes
UN SPS C: 39121305
UR: No

Dimensions

Depth U S: 2.24"
Height U S: 4.50"
Width U S: 4.50"

Technical Information

Material: Aluminum
Capacity: 2-gang
Feeds: Three quarter inch knockouts

Buy American Act Compliance

Country of Origin: INDIA
Buy American Act Status: No