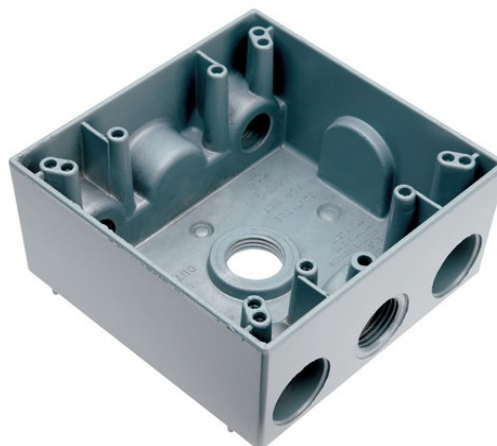


## Weatherproof Two Gang Box, Gray

WPB242



Weatherproof 2 Gang Box, 4 hole 1/2", 30.5 Cu.In., Gray (2 Holes One End, 1 Hole Other End, 1 Hole in Back)

### features & benefits

- Wide range of sizes, depths, and gangs.
- Baked-on electrostatic, polyester, powder paint for superior scratch and corrosion resistance.
- 2 closure plugs and mounting lugs furnished with all boxes.
- UL Listed for wet and/or damp locations with appropriate cover.
- Designed for both interior and exterior applications.
- Will accept standard 4 screw mounting covers and single gang weatherproof covers.
- Simply strike desired knockout studs with a sharp hammer blow for clean mounting holes.
- Heavy die-cast aluminum.

### specifications

#### General Info

Color: Gray  
Size: 2-gang  
Type: Box  
Special Features: Weatherproof

#### Listing Agencies/Third Party Information

CSA Listing Info: Yes  
CUL Listing No: No  
cULus: No  
cURus: No

Federal Spec: No  
UL Listing No: Yes  
UN SPS C: 39121305  
UR: No

**Dimensions**

Depth U S: 2.24"  
Height U S: 4.50"  
Width U S: 4.50"

**Technical Information**

Material: Aluminum  
Capacity: 2-gang  
Feeds: One half inch knockouts

**Buy American Act Compliance**

Country of Origin: INDIA  
Buy American Act Status: No