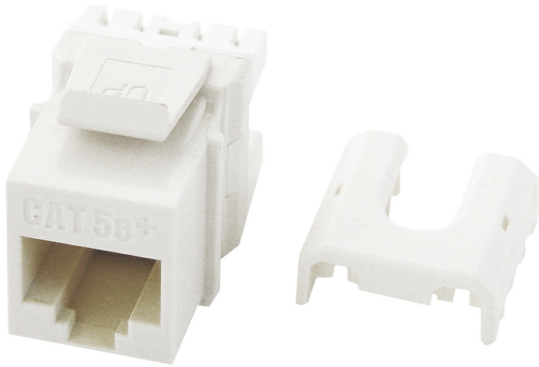




On-Q
Cat 5e Quick Connect RJ45 Keystone Insert, White, 50-Pack
Part No. WP3475WH50



The Cat 5e Quick Connect RJ45 Keystone Insert in light almond is designed for efficient and reliable network connections. This insert is ETL Verified to the Category 5e component standard, ensuring compliance with industry standards. It can be terminated with any 110 punchdown tool and exceeds EIA/TIA 568A/B Cat 5e Performance Specifications. Available in multiple colors, this insert is perfect for various networking applications.

Features & Benefits

ETL Verified to Category 5e component standard: Ensures standards compliance

RJ45 Inserts can be terminated with any 110 punchdown tool

Exceeds EIA/TIA 568A/B Cat 5e Performance Specifications

Available in Black, Brown, White, Light Almond, Grey, Blue, Orange, Ivory and Red

Contractor packs available in quantities of 50. To order, use part number WP3475-LA-50

Specifications

General Info

Product Line	On-Q	Color	White
UPC Number	804428054658	Country Of Origin	Taiwan, Province Of China
Features	Quick Connect Compatible	Application Sector	Residential
Standard	UL (UL/ANSI 1863), CSA (CAN/CSA-C22.2 No. 182.4-1990), IEEE 802.3an 10GBase-T, TIA 568-B.2-10, RoHS		

Dimensions

Product Width US	0.67 in	Product Depth US	1.18 in
Product Height US	0.8 in		

Technical Information

Termination Style

Punchdown

Cable Type

Cat5e

Environmental Conditions 0 to 93% (relative humidity, non-condensing)
