

Flat Panel TV Installation

Mounting a flat-panel TV on the wall is easy when you can hide the cables. Below you'll find an easy-to-follow guide outlining how to mount a flat-panel TV on the wall using just two products from Legrand.



1. ITEMS NEEDED

LEGRAND PRODUCTS:

Flat Panel TV Connection Kit
(HT2102-WH-V1)

In-Wall Cable Access Port
(WP1014-WH-V1)

1-Gang, New Work, Low Voltage
(F9059-01-V1 Bracket)

TOOLS & ADDITIONAL SUPPLIES:

- Drywall Saw
- Cable Stripper
- Level
- Tape Measure
- Appropriate Mount for TV
- Screwdriver
- Electric Tester
- Drill
- Electrical Wire

APPROXIMATE PROJECT COMPLETION TIME:

2 Hours

2. GETTING STARTED

First, determine where to draw power for this product. You can see in Figure 1 that the incoming cable wire and power outlet are side by side, but too far away from ideal mounting height.

If you lack an outlet at ideal mounting height, consider existing alternatives. In this example, the adjacent master bedroom wall has a power outlet in the same stud bay that you can tap for current.

Next, measure where the power outlet is located to determine placement for the Brush Strap installation.



Figure 1



Figure 2

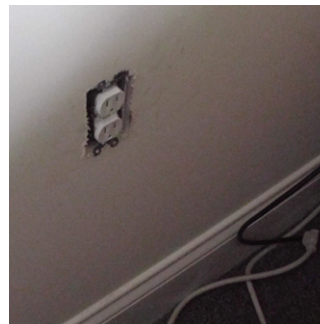


Figure 3



Figure 4

Flat Panel TV Installation

3. INSTALLATION



Figure 1

For Brush Strap installation, trace the existing on-wall product as a guide (Figure 1). If no on-wall product exists, use the template included on the back of box housing the Legrand Flat Panel TV Connection Kit. After completing the outline, cut holes for the product (Figures 2-4), run electrical cable (Figure 5), and rewire the outlet.

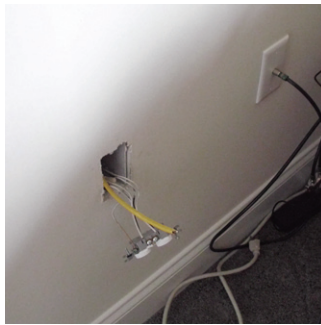


Figure 2

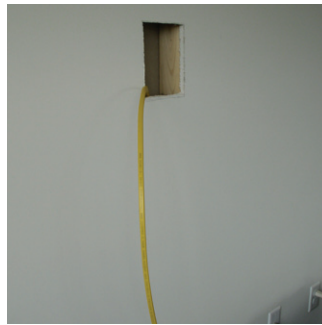


Figure 3

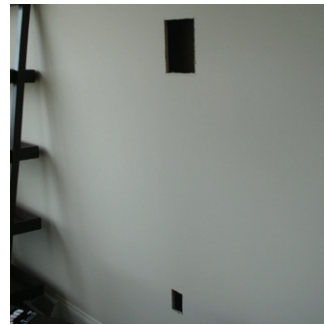


Figure 4



Figure 5



Figure 6

Next, insert the products into the rough-in holes and pull the HDMI cable from the upper hole down to the lower one (Figure 6).

After you're finished wiring the outlet, attach the wallplate (Figure 7) and secure the box to the wall (Figure 8).

Finally, following the instructions provided by the manufacturer, attach the mount to the wall and carefully hang the television (Figure 9).



Figure 7



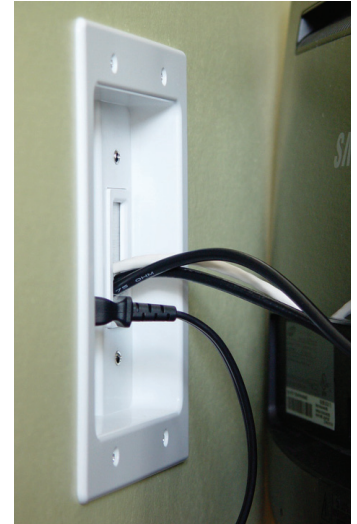
Figure 8



Figure 9

Flat Panel TV Installation

Mounting a flat-panel TV on the wall is easy when you can hide the cables. Below you'll find an easy-to-follow guide outlining how to mount a flat-panel TV on the wall using just two products from Legrand.



1. ITEMS NEEDED

LEGRAND PRODUCTS:

Flat Panel TV Connection Kit
(HT2102-WH-V1)

In-Wall Cable Access Port
(WP1014-WH-V1)

1-Gang, New Work, Low Voltage
(F9059-01-V1 Bracket)

TOOLS & ADDITIONAL SUPPLIES:

- Drywall Saw
- Cable Stripper
- Level
- Tape Measure
- Appropriate Mount for TV
- Screwdriver
- Electric Tester
- Drill
- Electrical Wire

APPROXIMATE PROJECT COMPLETION TIME:

2 Hours

2. GETTING STARTED

First, determine where to draw power for this product. You can see in Figure 1 that the incoming cable wire and power outlet are side by side, but too far away from ideal mounting height.

If you lack an outlet at ideal mounting height, consider existing alternatives. In this example, the adjacent master bedroom wall has a power outlet in the same stud bay that you can tap for current.

Next, measure where the power outlet is located to determine placement for the Brush Strap installation.



Figure 1



Figure 2

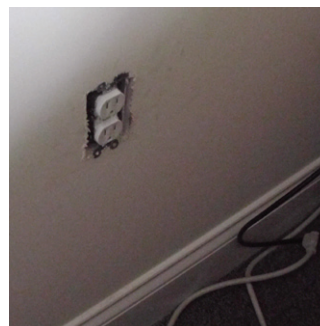


Figure 3



Figure 4

Flat Panel TV Installation

3. INSTALLATION



Figure 1

For Brush Strap installation, trace the existing on-wall product as a guide (Figure 1). If no on-wall product exists, use the template included on the back of box housing the Legrand Flat Panel TV Connection Kit. After completing the outline, cut holes for the product (Figures 2-4), run electrical cable (Figure 5), and rewire the outlet.



Figure 2

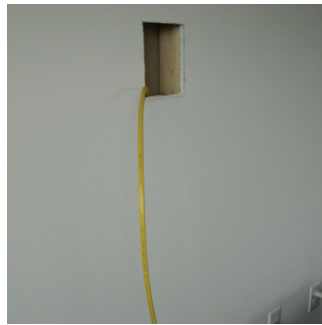


Figure 3

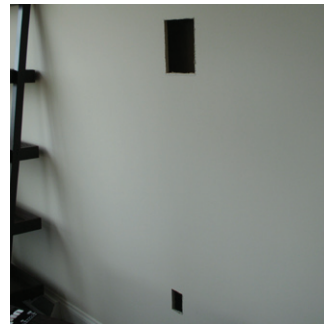


Figure 4



Figure 5



Figure 6

Next, insert the products into the rough-in holes and pull the HDMI cable from the upper hole down to the lower one (Figure 6).

After you're finished wiring the outlet, attach the wallplate (Figure 7) and secure the box to the wall (Figure 8).

Finally, following the instructions provided by the manufacturer, attach the mount to the wall and carefully hang the television (Figure 9).



Figure 7



Figure 8



Figure 9