

Steel Masonry Boxes

MASONRY BOXES

2 1/2" DEEP x 3 3/4" HIGH
1/2" & 3/4" CONCENTRIC KOs

UL LISTED



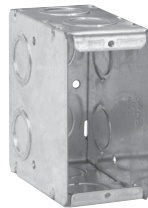
TP682

Cat. #	Gang	Width	Knockouts			Capacity Cu. In.	Unit Qty.	Wt. Lbs. Per 100
			Each End	Each Side	Bottom			
TP682	1	1 15/16"	1	2	2	15.5	20	70
TP683	2	3 3/4"	2	2	4	31.0	10	103
TP684	3	5 9/16"	3	2	6	46.5	5	129
TP685	4	7 3/8"	4	2	8	62.0	5	165
TP686	5	9 3/16"	5	2	10	77.5	5	189
TP687	6	11"	6	2	12	93.0	1	230

MASONRY BOXES

3 1/2" DEEP x 3 3/4" HIGH
1/2" & 3/4" CONCENTRIC KOs

UL LISTED



TP690



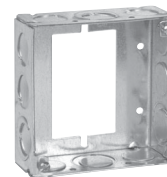
TP691

Cat. #	Gang	Width	Knockouts			Capacity Cu. In.	Unit Qty.	Wt. Lbs. Per 100
			Each End	Each Side	Bottom			
TP690	1	1 15/16"	2	2	2	22.0	20	84
TP691	2	3 3/4"	4	2	4	44.0	10	120
TP692	3	5 9/16"	6	2	6	66.5	10	155
TP693	4	7 3/8"	8	2	8	88.0	5	207
TP694	5	9 3/16"	10	2	10	110.0	5	235
TP695	6	11"	12	2	12	132.0	1	287

MASONRY BOX PARTITIONS & EXTENSION RING



TP820



TP422†

Cat. #	Description	Unit Qty.	Wt. Lbs. Per 100
Masonry Box Partitions			
TP820	Non-metallic Partition for 2 1/2" Deep Masonry Boxes	25	3
TP821	Non-metallic Partition for 3 1/2" Deep Masonry Boxes	25	4

Cat. #	Sides	Bottom	Unit Qty.	Wt. Lbs. Per 100
1 1/2" Deep Switch & Masonry Box Extension Ring				
TP422†	8 - 1/2", 4 - 1/2" + 3/4" E	-	50	50

†For use as extension with switch box, not four square box. See page 181 for 4" steel square covers.

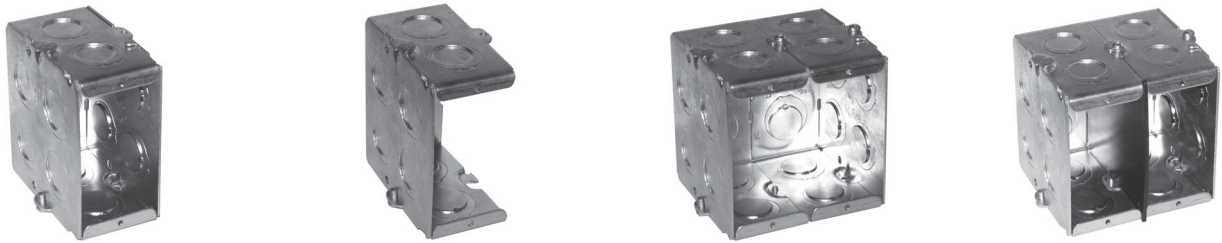
Steel Masonry Boxes

GANGABLE MASONRY BOXES

UL LISTED

Features:

- The gangable feature allows the option of creating a multiple gang box from a single gang box by simply removing the combo head screw holding the side with a #2 bit and connecting the two (or more) boxes together re-using the screws
- Non-metallic partitions (ordered separately) install quickly and easily without tools in multi-gang boxes and are used to separate power and control circuits within the same box, as required by the National Electrical Code®



Cat. #	Width	Knockouts			Capacity Cu. In.	Unit Qty.	Wt. Lbs. Per 100
		Each End	Each Side	Bottom			
2 1/2" Deep x 3 3/4" High, 1/2" & 3/4" Concentric KOs							
TP671	1 15/16"	2	2	2	15.5	20	63
3 1/2" Deep x 3 3/4" High, 1/2" & 3/4" Concentric KOs							
TP675	1 15/16"	2	4	2	22.0	20	82

GANGABLE MASONRY BOX PARTITIONS



TP654

Cat. #	Description	Unit Qty.	Wt. Lbs. Per 100
TP654	Non-metallic Partition for 2 1/2" Deep Gangable Masonry Boxes	25	4
TP656	Non-metallic Partition for 3 1/2" Deep Gangable Masonry Boxes	25	6

Steel Masonry Boxes

MASONRY BOXES

2 1/2" DEEP x 3 3/4" HIGH
1/2" & 3/4" CONCENTRIC KOs
UL LISTED

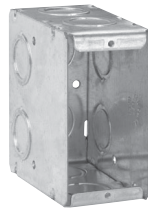


TP682

Cat. #	Gang	Width	Knockouts			Capacity Cu. In.	Unit Qty.	Wt. Lbs. Per 100
			Each End	Each Side	Bottom			
TP682	1	1 15/16"	1	2	2	15.5	20	70
TP683	2	3 3/4"	2	2	4	31.0	10	103
TP684	3	5 9/16"	3	2	6	46.5	5	129
TP685	4	7 3/8"	4	2	8	62.0	5	165
TP686	5	9 3/16"	5	2	10	77.5	5	189
TP687	6	11"	6	2	12	93.0	1	230

MASONRY BOXES

3 1/2" DEEP x 3 3/4" HIGH
1/2" & 3/4" CONCENTRIC KOs
UL LISTED



TP690



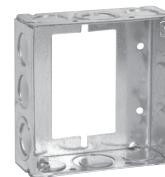
TP691

Cat. #	Gang	Width	Knockouts			Capacity Cu. In.	Unit Qty.	Wt. Lbs. Per 100
			Each End	Each Side	Bottom			
TP690	1	1 15/16"	2	2	2	22.0	20	84
TP691	2	3 3/4"	4	2	4	44.0	10	120
TP692	3	5 9/16"	6	2	6	66.5	10	155
TP693	4	7 3/8"	8	2	8	88.0	5	207
TP694	5	9 3/16"	10	2	10	110.0	5	235
TP695	6	11"	12	2	12	132.0	1	287

MASONRY BOX PARTITIONS & EXTENSION RING



TP820



TP422†

Cat. #	Description	Unit Qty.	Wt. Lbs. Per 100
Masonry Box Partitions			
TP820	Non-metallic Partition for 2 1/2" Deep Masonry Boxes	25	3
TP821	Non-metallic Partition for 3 1/2" Deep Masonry Boxes	25	4

Cat. #	Sides	Bottom	Unit Qty.	Wt. Lbs. Per 100
1 1/2" Deep Switch & Masonry Box Extension Ring				
TP422†	8 - 1/2", 4 - 1/2" + 3/4" E	-	50	50

†For use as extension with switch box, not four square box. See page 181 for 4" steel square covers.

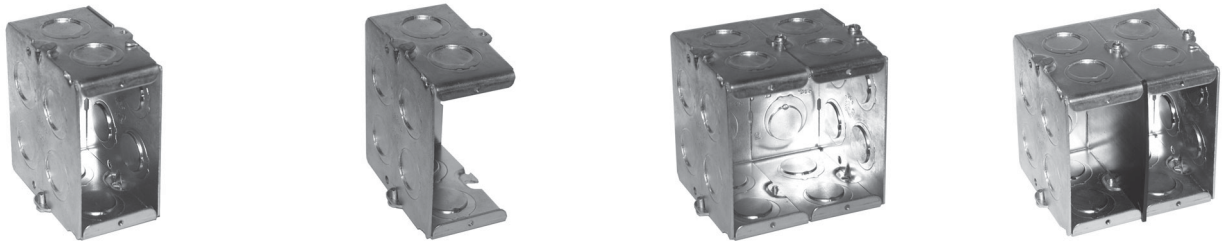
Steel Masonry Boxes

GANGABLE MASONRY BOXES

UL LISTED

Features:

- The gangable feature allows the option of creating a multiple gang box from a single gang box by simply removing the combo head screw holding the side with a #2 bit and connecting the two (or more) boxes together re-using the screws
- Non-metallic partitions (ordered separately) install quickly and easily without tools in multi-gang boxes and are used to separate power and control circuits within the same box, as required by the National Electrical Code®



Cat. #	Width	Knockouts			Capacity Cu. In.	Unit Qty.	Wt. Lbs. Per 100
		Each End	Each Side	Bottom			
2 1/2" Deep x 3 3/4" High, 1/2" & 3/4" Concentric KOs							
TP671	1 15/16"	2	2	2	15.5	20	63
3 1/2" Deep x 3 3/4" High, 1/2" & 3/4" Concentric KOs							
TP675	1 15/16"	2	4	2	22.0	20	82

GANGABLE MASONRY BOX PARTITIONS



TP654

Cat. #	Description	Unit Qty.	Wt. Lbs. Per 100
TP654	Non-metallic Partition for 2 1/2" Deep Gangable Masonry Boxes	25	4
TP656	Non-metallic Partition for 3 1/2" Deep Gangable Masonry Boxes	25	6

Steel Boxes