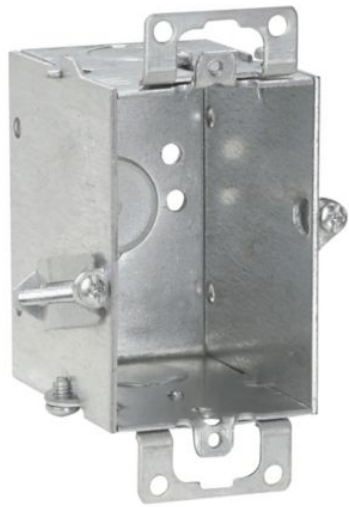


Specifications



Eaton TP224

Eaton Crouse-Hinds series Switch Box, (1) 1/2", Hold-Tite, Conduit (no clamps), 2-1/2", (1) 1/2", Steel, Ears, Gangable, 12.5 cubic inch capacity

General specifications

PRODUCT NAME	Eaton Crouse-Hinds series switch box
CATALOG NUMBER	TP224
UPC	786189102246
PRODUCT LENGTH/DEPTH	2 in
PRODUCT HEIGHT	3 in
PRODUCT WIDTH	2.5 in
PRODUCT WEIGHT	0.61 lb



Certifications and compliances

AREA CLASSIFICATION	Ordinary/Non-Hazardous Locations
STANDARDS TYPE	NEC/CEC

Product specifications

DEPTH	2-1/2"
TYPE	Gangable
CAPACITY	12.5 cubic in
CONDUIT/CABLE	Conduit (no clamps)

BRACKET STYLE	Hold-Tite
END KNOCKOUTS	(1) 1/2 in
BOTTOM KNOCKOUTS	(1) 1/2 in
MATERIAL	Steel
SPECIAL FEATURES	Ears

Resources

CATALOGS [Crouse-Hinds series Steel Switch Boxes catalog page](#)

CERTIFICATION REPORTS [Steel Switch Boxes Canadian certification](#)

[Steel Switch Boxes UL certification](#)

SPECIFICATIONS AND DATASHEETS [Eaton Specification Sheet - TP224](#)

[Steel Outlet Boxes for Electrical Systems](#)

PROJECT NAME:

PROJECT NUMBER:

PREPARED BY:

DATE:



Eaton Corporation plc
Eaton House
30 Pembroke Road
Dublin 4, Ireland
Eaton.com

© 2025 Eaton. All Rights Reserved.

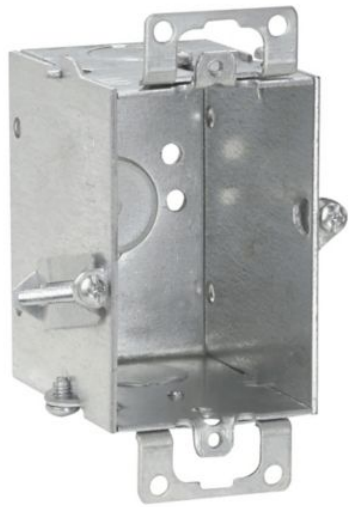
Eaton is a registered trademark.

All other trademarks are property of their respective owners.

Follow us on social media to get the latest product and support information.



Specifications



Eaton TP224

Eaton Crouse-Hinds series Switch Box, (1) 1/2", Hold-Tite, Conduit (no clamps), 2-1/2", (1) 1/2", Steel, Ears, Gangable, 12.5 cubic inch capacity

General specifications

PRODUCT NAME	Eaton Crouse-Hinds series switch box
CATALOG NUMBER	TP224
UPC	786189102246
PRODUCT LENGTH/DEPTH	2 in
PRODUCT HEIGHT	3 in
PRODUCT WIDTH	2.5 in
PRODUCT WEIGHT	0.61 lb



Certifications and compliances

AREA CLASSIFICATION	Ordinary/Non-Hazardous Locations
STANDARDS TYPE	NEC/CEC

Product specifications

DEPTH	2-1/2"
TYPE	Gangable
CAPACITY	12.5 cubic in
CONDUIT/CABLE	Conduit (no clamps)

BRACKET STYLE	Hold-Tite
END KNOCKOUTS	(1) 1/2 in
BOTTOM KNOCKOUTS	(1) 1/2 in
MATERIAL	Steel
SPECIAL FEATURES	Ears

Resources

CATALOGS [Crouse-Hinds series Steel Switch Boxes catalog page](#)

CERTIFICATION REPORTS [Steel Switch Boxes Canadian certification](#)

[Steel Switch Boxes UL certification](#)

SPECIFICATIONS AND DATASHEETS [Eaton Specification Sheet - TP224](#)

[Steel Outlet Boxes for Electrical Systems](#)

PROJECT NAME:

PROJECT NUMBER:

PREPARED BY:

DATE:



Eaton Corporation plc
Eaton House
30 Pembroke Road
Dublin 4, Ireland
Eaton.com

© 2025 Eaton. All Rights Reserved.

Eaton is a registered trademark.

All other trademarks are property of their respective owners.

Follow us on social media to get the latest product and support information.

