

OLD WORK SWITCH AND OUTLET BOX WITH QUICK/CLICK

S352W | [Pass & Seymour](#)

FEATURES & BENEFITS

Triple Gang, Old Work Switch and Outlet Box with Swing-Bracket for mounting. Adjusts from 1 1/4" down to 1/8". Six Auto/Clamps for Each End. 10 pack.



- Quick/Click feature secures devices quickly and easily.
- Does not strip when over-torqued.
- 6 Auto/Clamps on each end eliminate the need for separate cable clamps.
- Metal swing bracket for quick mounting in existing walls.
- Big 52 cubic inch capacity.
- Divider plate (LVDIV1, sold separately) used when installing line and low-voltage devices or multiple 277 volt devices in same box.
- Easy installation, rectangular cutout.
- Swing bracket adjusts from 1 1/4 inch to 1/8 inch.
- Durable, impact-resistant thermoplastic box.

SPECIFICATIONS

GENERAL INFO

Product Series: Slater

Type: Switch, Outlet Box

Special Features: Old Work, Quick/Click

LISTING AGENCIES/THIRD PARTY CERTIFICATIONS

RoHS: Yes

CSA Listing Info: No

CUL Listing No: No
cULus: Yes
cURus: No
Federal Spec: No
UL Listing No: No
UN SPSC: 39121308
UR: No

DIMENSIONS

Depth (US): 3.03125
Length (US): 3.75
Width (US): 5.875
Volume: 52.0

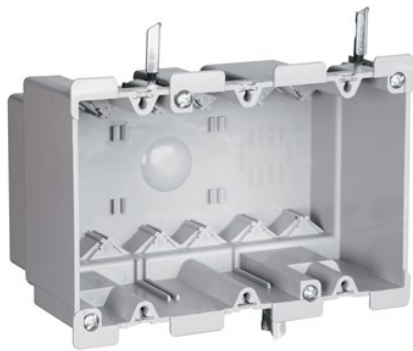
TECHNICAL INFORMATION

Material: Plastic

BUY AMERICAN ACT COMPLIANCE

Country Of Origin: UNITED STATES OF AMERICA
Buy American Act Status: Buy American Act Compliant





OLD WORK SWITCH AND OUTLET BOX WITH QUICK/CLICK

S352W | [Pass & Seymour](#)

FEATURES & BENEFITS

Triple Gang, Old Work Switch and Outlet Box with Swing-Bracket for mounting. Adjusts from 1 1/4" down to 1/8".
Six Auto/Clamps for Each End. 10 pack.



- Quick/Click feature secures devices quickly and easily.
- Does not strip when over-torqued.
- 6 Auto/Clamps on each end eliminate the need for separate cable clamps.
- Metal swing bracket for quick mounting in existing walls.
- Big 52 cubic inch capacity.
- Divider plate (LVDIV1, sold separately) used when installing line and low-voltage devices or multiple 277 volt devices in same box.
- Easy installation, rectangular cutout.
- Swing bracket adjusts from 1 1/4 inch to 1/8 inch.
- Durable, impact-resistant thermoplastic box.

SPECIFICATIONS

GENERAL INFO

Product Series: Slater

Type: Switch, Outlet Box

Special Features: Old Work, Quick/Click

LISTING AGENCIES/THIRD PARTY CERTIFICATIONS

RoHS: Yes

CSA Listing Info: No

CUL Listing No: No
cULus: Yes
cURus: No
Federal Spec: No
UL Listing No: No
UN SPSC: 39121308
UR: No

DIMENSIONS

Depth (US): 3.03125
Length (US): 3.75
Width (US): 5.875
Volume: 52.0

TECHNICAL INFORMATION

Material: Plastic

BUY AMERICAN ACT COMPLIANCE

Country Of Origin: UNITED STATES OF AMERICA
Buy American Act Status: Buy American Act Compliant

