



ROOFTOP PYRAMID 50 FOAM-BASED SUPPORT, EG, 6"

CATALOG NUMBER

RPS50H6EG



FEATURES

Replaces slow and labor-intensive installation methods

Supports pipe, conduit, cable tray and equipment on roofs and below raised floors

Easily increase load capacity by combining similar nVent CADDY Pyramid supports

Protects the roof membrane while absorbing shock and vibration, without absorbing water

Metal cover protects against weather and other environmental conditions, such as bird damage

PRODUCT ATTRIBUTES

Material: Steel;Polyethylene

Finish: Electrogalvanized

Static Load Safety Factor: 3:1

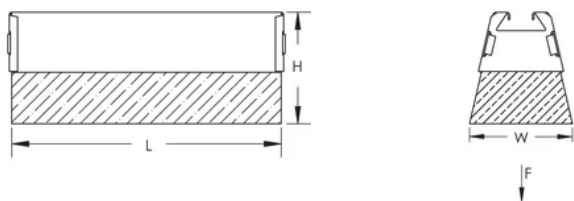
Height (H): 6"

Length (L): 10 3/8"

Width (W): 4 3/4"

Static Load (F): 50lb

DIAGRAMS



WARNING

nVent products shall be installed and used only as indicated in nVent's product instruction sheets and training materials. Instruction sheets are available at www.nvent.com and from your nVent customer service representative. Improper installation, misuse, misapplication or other failure to completely follow nVent's instructions and warnings may cause product malfunction, property damage, serious bodily injury and death and/or void your warranty.

North America

+1.800.753.9221

Option 1 – Customer Care

Option 2 – Technical Support

Europe

Netherlands:

+31 800-0200135

France:

+33 800 901 793

Europe

Germany:

800 1890272

Other Countries:

+31 13 5835404

APAC

Shanghai:

+ 86 21 2412 1618/19

Sydney:

+61 2 9751 8500



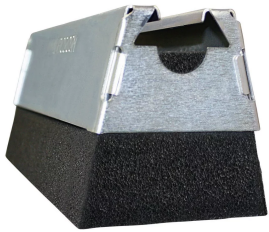
Our powerful portfolio of brands:
nVent.com CADDY ERICO HOFFMAN RAYCHEM SCHROFF
TRACER



ROOFTOP PYRAMID 50 FOAM-BASED SUPPORT, EG, 6"

CATALOG NUMBER

RPS50H6EG



FEATURES

Replaces slow and labor-intensive installation methods

Supports pipe, conduit, cable tray and equipment on roofs and below raised floors

Easily increase load capacity by combining similar nVent CADDY Pyramid supports

Protects the roof membrane while absorbing shock and vibration, without absorbing water

Metal cover protects against weather and other environmental conditions, such as bird damage

PRODUCT ATTRIBUTES

Material: Steel;Polyethylene

Finish: Electrogalvanized

Static Load Safety Factor: 3:1

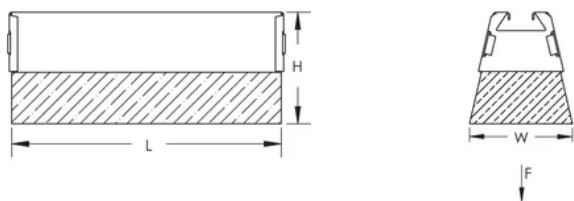
Height (H): 6"

Length (L): 10 3/8"

Width (W): 4 3/4"

Static Load (F): 50lb

DIAGRAMS



WARNING

nVent products shall be installed and used only as indicated in nVent's product instruction sheets and training materials. Instruction sheets are available at www.nvent.com and from your nVent customer service representative. Improper installation, misuse, misapplication or other failure to completely follow nVent's instructions and warnings may cause product malfunction, property damage, serious bodily injury and death and/or void your warranty.

North America

+1.800.753.9221

Option 1 – Customer Care

Option 2 – Technical Support

Europe

Netherlands:

+31 800-0200135

France:

+33 800 901 793

Europe

Germany:

800 1890272

Other Countries:

+31 13 5835404

APAC

Shanghai:

+ 86 21 2412 1618/19

Sydney:

+61 2 9751 8500



Our powerful portfolio of brands:
nVent.com CADDY ERICO HOFFMAN RAYCHEM SCHROFF
TRACER

© 2025 nVent. All nVent marks and logos are owned or licensed by nVent Services GmbH or its affiliates. All other trademarks are the property of their respective owners.

nVent reserves the right to change specifications without notice.