



Powering Business Worldwide

pe.eaton.com

Type CH Style 3/4 in Loadcenter and Breaker Accessories

NL20

UPC:782113099156

Dimensions:

- **Height:** .1 IN
- **Length:** 8 IN
- **Width:** 5 IN

Weight:.1 LB

Notes:Add-on

Warranties:

- Limited lifetime

Specifications:

- **Type:** Neutral lug
- **Amperage Rating:** 125A
- **Used With:** #2/0 max wire size loadcenters

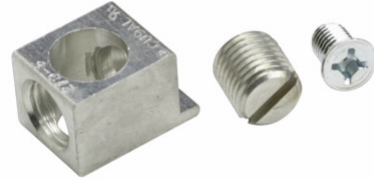
Supporting documents:

- [Eatons Volume 1-Residential and Light Commercial](#)
- [Eaton Specification Sheet - NL20](#)

Certifications:

- UL 489

Product compliance: No Data





Powering Business Worldwide

pe.eaton.com

Type CH Style 3/4 in Loadcenter and Breaker Accessories

NL20

UPC:782113099156

Dimensions:

- **Height:** .1 IN
- **Length:** 8 IN
- **Width:** 5 IN

Weight:.1 LB

Notes:Add-on

Warranties:

- Limited lifetime

Specifications:

- **Type:** Neutral lug
- **Amperage Rating:** 125A
- **Used With:** #2/0 max wire size loadcenters

Supporting documents:

- [Eatons Volume 1-Residential and Light Commercial](#)
- [Eaton Specification Sheet - NL20](#)

Certifications:

- UL 489

Product compliance: No Data

