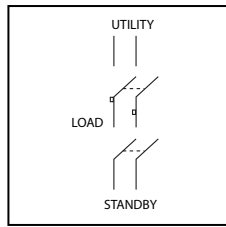


Two Pole

Single Phase – Order Neutral Kit for 3-wire systems

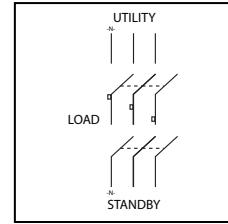
Fig. A



Three Pole

Three Phase – Order Neutral Kit for 4-wire systems
Single Phase – 3" pole can be used for Switched Neutral Applications

Fig. B



| Figure | Model Number | Switch Ratings | | | | System Voltage | | | | Accessories |
|----------------------------------|-------------------------|----------------|----------------|---------------|-------|----------------|------|-------------|------|--------------------------|
| | | | | | | Single Phase | | Three Phase | | |
| | | Main (Amps) | Standby (Amps) | Voltage (VAC) | Poles | 120/240 Vac | 240V | 480V | 600V | Neutral Kit ⁴ |
| 100 Amp Transfer Switches | | | | | | | | | | |
| A | GS1101B12UL | 100 | 100 | 240 | 2 | ● | | | | NEU102 |
| B | GS3161B12UL | 100 | 100 | 600 | 3 | ● ³ | ● | ● | ● | NEU102 |
| A | GS3161G ¹ | 100 | 100 | 600 | 3 | ● ³ | ● | ● | ● | NEU102 |
| 200 Amp Transfer Switches | | | | | | | | | | |
| A | GS1201B20UL | 200 | 100 | 240 | 2 | ● | | | | NEU202 |
| A | GS1202B20UL | 200 | 200 | 240 | 2 | ● | | | | NEU202 |
| A | GS1202B20M ² | 200 | 200 | 240 | 2 | ● | | | | NEU202 |
| B | GS3262B25UL | 200 | 200 | 600 | 3 | ● ³ | ● | ● | ● | NEU202 |
| B | GS3262G ¹ | 200 | 200 | 600 | 3 | ● ³ | ● | ● | ● | NEU202 |
| 400 Amp Transfer Switches | | | | | | | | | | |
| A | GS1402B01UL | 400 | 200 | 240 | 2 | ● | | | | NEU407 |
| B | GS3402B01UL | 400 | 200 | 240 | 3 | ● ³ | ● | | | NEU407 |
| A | GS1404B01UL | 400 | 400 | 240 | 2 | ● | | | | NEU407 |
| B | GS3404B01UL | 400 | 400 | 240 | 3 | ● ³ | ● | | | NEU407 |
| B | GS3464B01UL | 400 | 400 | 600 | 3 | ● ³ | ● | ● | ● | NEU407 |

1 Light Duty Transfer Switch Aluminum Enclosure - includes hub closure plate

2 Includes Meter Socket - Not UL Listed

3 Use for Switched Neutral applications - Neutral Kit not required

4 Order neutral kit for 3-wire single phase systems (120/240) or 4-wire three phase systems (208Y/120, 480Y/277, or 600Y/347)

Lug Assemblies

| Part Number | Lug Size and Qty. |
|-------------|--|
| NI60B2 | (4)#14-4 CU AL |
| NEU102 | (5)#12-1/0 CU AL |
| NI100B2 | (5)#14-1/0 CU AL |
| NEU202 | (2)#14-1/0, (3)#6-250KCMIL CU AL |
| NI200 | (3)1/0-250KCMIL, (3)#12-1/0 CU AL |
| NI200A5 | (3)1/0-250KCMIL, (3)#12-1/0 CU AL |
| NEU407 | (2)#14-1/0, (3)#2-600KCMIL |
| NI400A1 | (2)1/0-600KCMIL, (3)1/0-250KCMIL CU AL |
| GL3 | (2)#12-2 CU AL |



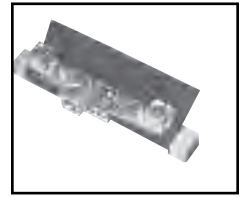
NI60B2



NEU102



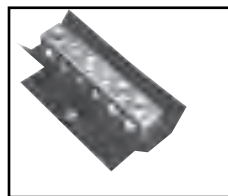
NI100B2



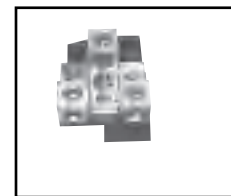
NEU202



NI200



NI200A5



NEU407



NI400A1



GL3

Meter Door Replacement Kits

Meter door replacement kits are available for Service Entrance, Temporary Power, and RV metallic metered units. Please consult manufacturer to ensure the proper kit is ordered for your model.