

ML56 LED Lighting System
600 / 900 / 1200 Series

HALO



Cooper Lighting

by **FAT•N**

ML56 Series LED Lighting System



Shown: 1200 Series with optional NFL optic.

The Halo ML56 is a comprehensive system of modular LED light modules for use with dedicated 5" or 6" LED trims. This system is suitable for new construction, remodel and retrofit installation, fitting into both 5" and 6" housings. Compatible with Halo 5" H550 and 6" H750 Series LED housings. And in retrofit of existing housings, the ML56 Series fits 5" and 6" Halo, All-Pro, and other compatible 5" or 6" housings.

The ML56 system offers shallow trims for installation in Halo 6" H2750ICAT LED housing and in Halo, All-Pro, and other 5" or 6" compatible shallow housings.



Refer to ENERGY STAR® Certified Products List

The Halo ML56 Series offers high performance LED downlighting that sets a new standard for recessed lighting with a flexible modular system of LED Light Modules and Trims.

ML56 LED Light Modules

The ML56 Light Module System offers an astounding selection with three lumen packages 600, 900 and 1200 series, 80 CRI or 90 CRI, and four color temperatures 2700 K, 3000 K, 3500 K, or 4000 K. For added installation flexibility, the ML56 Light Modules are universal voltage 120V – 277V with integral LED drivers that are dimmable at 120V (switchable at 120V, 220V, 230V, 240V and 277V with Halo LED 5" H550 and 6" H750, H2750 series housings). The ML56 diffuse lens provides uniform illumination and is wet location listed with ML56 reflector and baffle trims. The 1200 series optional narrow flood lens optic offers a focused 25-degree beam.

ML56 LED Trims

The ML56 LED trim collection offers a complete vocabulary of 5" and 6" trims including traditional reflectors and baffles in Halo's popular white, black, specular, haze, satin nickel and tuscan bronze finishes. In addition, the ML56 trim collection includes 5" and 6" trims that are an industry break-through: attractive, low-profile directional LED eyeballs; non-conductive "dead-front" shower-rated baffles; and Halo-exclusive wall wash trims with a repositionable kick reflector. These revolutionary Halo wall wash trims allow for 360-degree positioning of the kick reflector in the primary reflector for fine-tuning and allow the addition of a second kick reflector for double or corner wall washing.



ML56 Features & Benefits

- 600 Series: over 700 lumens, 9.0 - 10.2 Watts, up to 78 LpW*
- 900 Series: over 1000 lumens, 13.4 Watts, up to 75 LpW*
- 1200 Series: over 1400 lumens, 17.5 Watts, up to 80 LpW*
- 1200 Series optional accessory: 25° narrow flood (NFL) optic kit
- Color Rendering Index (CRI) options: 80 or 90
- Correlated Color Temperature (CCT) options:
 - 2700 K, 3000 K, 3500 K, 4000 K
- LED chromaticity of 3 Standard Deviation of Color Measurement (SDCM). Exceeds ENERGY STAR® color standards per ANSI C78.377-2008.
- LED connector for use in Halo series LED housings as a High Efficacy Luminaire (H550, H250, and H2750 series)
- E26 Edison screw base retrofit adapter included with ML56 light modules
- Fits 5" and 6" standard and shallow housings: Halo, All-Pro and more. (Trims determine 5" or 6" aperture and their height determines standard or shallow housing application.)
- Torsion spring installation (springs attached to trim)
- 6" friction blade mouting option for use with 600 Series and 900 Series. Order: ML56CLIP
- Retrofit adapter band for housings without torsion spring brackets. Order: ML7RAB.
- Universal voltage: 120-277V input, 50/60Hz
- Dimmable at 120V to 5% nominal on select leading edge and trailing edge phase control dimmers.
- Switchable at 120V, 220V, 230V, 240V, and 277V with Halo LED H550, H750, and H2750 Series housings.

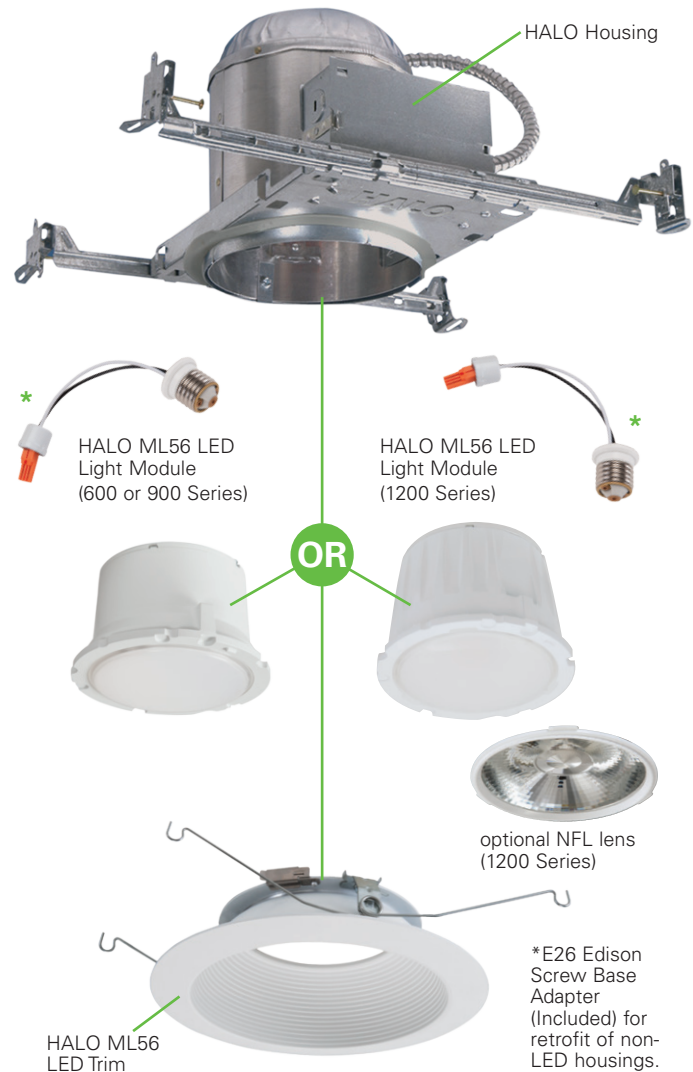
*LpW efficacy is dependant upon CCT, CRI, trim size and trim finish.

Compliance and Qualification

- ENERGY STAR® certified luminaire - consult ENERGY STAR® Certified Product List
- cULus Listed 1598 luminaire, suitable for direct contact with insulation*
- cULus Listed - Damp Location
- cULus Listed - Wet Location (shower light) with reflector and baffle trims only. (Directional eyeball trims are damp location.)
- IP66 Ingress Protection rated for 600 and 900 Series and IP56 for 1200 Series Ingress Protection rated with reflector and baffle trims only
- UL Classified - retrofit of compatible 5" or 6" housings
- 90 CRI: Can be used to comply with California Title 24 High Efficacy requirements. Certified to California Title 20 Appliance Efficiency Database.
- 80 CRI: Can be used to comply with California Title 24 Non-Residential Lighting Controls requirements as a LED luminaire.
- Lighting Facts® Listed
- Five-year limited warranty
- Airtight certified per ASTM E283 (not exceeding 2.0 CFM under 57 Pascals pressure difference)
- Can be used for International Energy Conservation Code (IECC) high efficiency luminaire compliance.
- Can be used for Washington State Energy Code compliance
- EMI/RFI per FCC 47CFR Part 15 Class B Consumer limits (residential and commercial compliant)
- Contains no mercury or lead and RoHS compliant.
- Photometric testing in accordance with IES LM-79
- Lumen maintenance projections in accordance with IES LM-80 and TM-21

*Not for use with housings in direct contact with spray foam insulation.

ML56 Series LED Lighting System



90 CRI



Can be used to comply with California Title 24 High Efficacy requirements. Certified to California Title 20 Appliance Efficiency Database.

80 CRI



Can be used to comply with California Title 24 Non-Residential Lighting Controls requirements as a LED Luminaire.

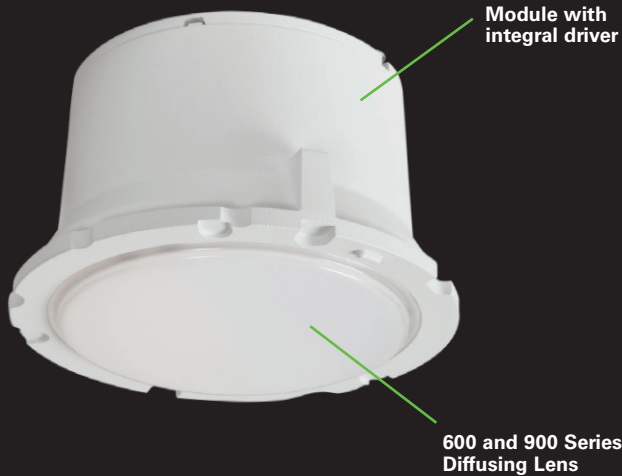


Refer to ENERGY STAR® Certified Products List.

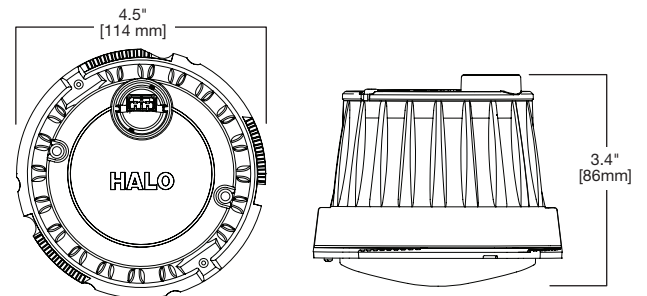
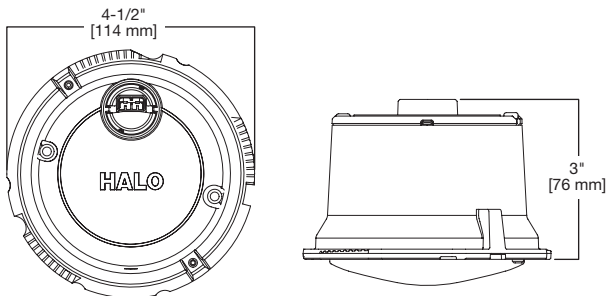
ML56 LED Light Modules

ML56 Light Modules are integrated LED engines that include a LED chip package, LED driver, heat sink, and lens in a modular design that allows interchangeable use with designated ML56 5" and 6" LED trims. The ML56 light module design features an inside frost diffusing lens that looks like a traditional lamp for visual comfort and aesthetic familiarity. The diffusing lens provides uniform illumination. And for the 1200 Series LED light modules the diffusing lens is interchangeable with an optional 25° Narrow Flood (NFL) beam forming lens. The ML56 LED system has wet location listing with ML56 reflector and baffle trims. ML56 eyeball trims have damp location listing.

600 Series and 900 Series



1200 Series



Consult ML56 LED light module specification sheets for applicable trim listings with respective 600 Series, 900 Series and 1200 Series.

600 Series LED Light Module

- Up to 825 lumens*
- 2700 K, 3000 K, 3500 K and 4000 K CCT
- 9.0 Watts - 80 CRI / 10.2 Watts - 90 CRI
- Dimming: 120V leading edge and trailing edge phase-control dimmers, with dimming to 5% nominal
- Diffusing lens for uniform illumination
- Up to 92 Lumens per Watt* (LPW)
- Fits Halo LED housings or retrofits into existing 5" or 6" aperture compatible housings - IC and Non-IC
- E26 Edison screw base retrofit adapter included

*CRI and color temperature, as well as trim size and finish, determines the delivered lumen and LPW value. Refer to lumen matrix and photometry sections for additional examples. Photometric files are available at www.eaton.com/lighting.

ML56 600 Series (Values at non-dimming line voltage)

Energy Data	80 CRI	90 CRI
EMI/RFI:	FCC Title 47 CFR, Part 15 (Consumer level - commercial & residential compliant)	FCC Title 47 CFR, Part 15 (Consumer level - commercial & residential compliant)
Input Voltage:	UNV 120V-277V	UNV 120V-277V
Input Frequency:	50/60Hz	50/60Hz
Power Factor:	>0.95 @ 120V >0.9 @ 277V	>0.95 @ 120V >0.9 @ 277V
THD:	<20%	<20%
Input Power:	9.0W	10.2W
Input Current at 120V:	0.15A	0.15A
Input Current at 277V:	0.08A	0.08A

Use ML56 600 LED Series to Replace



65W Incandescent
BR30 Reflector Lamp

86%
energy savings



18W (22W input) Compact
Fluorescent Luminaire

59%
energy savings

Ordering Information

600 Series	2700 K <small>Warm White</small>	3000 K <small>Warm White</small>	3500 K <small>Neutral White</small>	4000 K <small>Cool White</small>
80 CRI	ML5606827	ML5606830	ML5606835	ML5606840
90 CRI	ML5606927	ML5606930	ML5606935	ML5606940

900 Series LED Light Module

- Up to 1135 lumens*
- 2700 K, 3000 K, 3500 K and 4000 K CCT
- 13.4 Watts - 80 CRI and 90 CRI
- Dimming: 120V leading edge and trailing edge phase-control dimmers, with dimming to 5% nominal
- Diffusing lens for uniform illumination
- Up to 85 Lumens per Watt* (LPW)
- Fits Halo LED housings or retrofits into existing 5" or 6" aperture compatible housings - IC and Non-IC
- E26 Edison screw base retrofit adapter included

*CRI and color temperature, as well as trim size and finish, determines the delivered lumen and LPW value. Refer to lumen matrix and photometry sections for additional examples. Photometric files are available at www.eaton.com/lighting.

ML56 900 Series (Values at non-dimming line voltage)

Energy Data	80 CRI	90 CRI
EMI/RFI:	FCC Title 47 CFR, Part 15 (Consumer level - commercial & residential compliant)	FCC Title 47 CFR, Part 15 (Consumer level - commercial & residential compliant)
Input Voltage:	UNV 120V-277V	UNV 120V-277V
Input Frequency:	50/60Hz	50/60Hz
Power Factor:	>0.95 @ 120V and >0.9 @ 277V	>0.95 @ 120V and >0.9 @ 277V
THD:	<20%	<20%
Input Power:	13.4W	13.4W
Input Current at 120V:	0.15A	0.15A
Input Current at 277V:	0.08A	0.08A

Use ML56 900 LED Series to Replace



75W Halogen PAR 30
Reflector Lamp

82%
energy savings



60W Halogen PAR38
Reflector Lamp

77%
energy savings



26W (28W input) Compact
Fluorescent Luminaire

52%
energy savings

Ordering Information

900 Series	2700 K <small>Warm White</small>	3000 K <small>Warm White</small>	3500 K <small>Neutral White</small>	4000 K <small>Cool White</small>
80 CRI	ML5609827	ML5609830	ML5609835	ML5609840
90 CRI	ML5609927	ML5609930	ML5609935	ML5609940

1200 Series Optics



1200 Series Accessories

BFR56NFL
Beam forming reflector kit, narrow flood, 25° nominal

BFR56MH
Media holder, accepts one 3.45" lens
Requires BFR56NFL and L345SF. Order separately.

L345SF
3.45" diameter soft focus lens
Requires BFR56NFL and BFR56MH. Order separately.

1200 Series LED Light Module

- Up to 1800 lumens*
- 2700 K, 3000 K, 3500 K and 4000 K CCT
- 17.5 Watts - 80 CRI and 90 CRI
- Dimming: 120V leading edge and trailing edge phase-control dimmers, with dimming to 5% nominal
- Diffusing lens is standard, for uniform illumination
- Optional beam forming 25° narrow flood (NFL) optic lens kit is interchangeable with the standard lens. Order BFR56NFL.
- Up to 104 lumens per Watt* (LPW)
- Fits Halo LED housings or retrofits into existing 5" or 6" aperture compatible housings - IC and Non-IC
- E26 Edison screw base retrofit adapter included

*CRI and color temperature, as well as trim size and finish, determines the delivered lumen and LPW value. Refer to lumen matrix and photometry sections for additional examples. Photometric files are available at www.eaton.com/lighting

ML56 1200 Series (Values at non-dimming line voltage)

Energy Data	80 CRI	90 CRI
EMI/RFI:	FCC Title 47 CFR, Part 15 (Consumer level - commercial & residential compliant)	FCC Title 47 CFR, Part 15 (Consumer level - commercial & residential compliant)
Input Voltage:	UNV 120V-277V	UNV 120V-277V
Input Frequency:	50/60Hz	50/60Hz
Power Factor:	>0.95 @ 120V and >0.9 @ 277V	>0.95 @ 120V and >0.9 @ 277V
THD:	<20%	<20%
Input Power:	17.5W	17.5W
Input Current at 120V:	0.14A	0.14A
Input Current at 277V:	0.07A	0.07A

Use ML56 1200 LED Series to Replace



72W Halogen PAR 38 Reflector Lamp

75%
energy savings



70W Halogen IR (Infrared) PAR38 Reflector Lamp

75%
energy savings



32W (36W input) Compact Fluorescent Luminaire

51%
energy savings

Ordering Information

1200 Series	2700 K <small>Warm White</small>	3000 K <small>Warm White</small>	3500 K <small>Neutral White</small>	4000 K <small>Cool White</small>
80 CRI	ML5612827	ML5612830	ML5612835	ML5612840
90 CRI	ML5612927	ML5612930	ML5612935	ML5612940

The Abbey Espresso Bar and Café Belleville, IL

Whether choosing lighting for a home or business, the two most important elements to consider are function and aesthetics. Function does not just encompass the quality of the materials and construction, but also the efficiency and ability to illuminate the defined space. And aesthetics do not merely include the overall look of the lighting fixture, but also the ambiance and environment created by the product.

The Abbey Coffee Shop, a new multi-purpose business in Belleville, Ill., was looking to attain that rare balance of the two as the facility wasn't just an ordinary typical coffee shop. Instead, the space had many specific functions, including a retail store, restaurant, gelato bar and music venue. As its opening approached, owners mulled over how to best illuminate this flexible, ever-changing space. To tackle the problem head-on, the Abbey Coffee Shop decided to bring in a lighting expert.

After conducting a complete assessment of the establishment, consultant David Paul from Lighting Associates knew he needed to find a lighting solution that could seamlessly and continually transform the open-concept space based on its needs. He chose recessed downlighting with adjustable features for its ability to easily transform and reconfigure the illumination of clearly defined areas.

The Abbey Espresso Bar and Café - Belleville, IL

Multi-purpose Facility Chooses Halo LED Downlighting for Challenging and Unique Lighting Needs

He also needed an aesthetically pleasing lighting system. Day or night, whatever the function, the coffee shop needed to set the right mood and environment for its customers. Paul chose Cooper Lighting's Halo ML56 LED recessed downlight module for its powerful output of 900 lumens, dimmability and its warm color temperature designed to provide customers with a welcoming environment for any occasion. Additionally, the product's satin nickel finish would provide a complementary blend with the dark ceiling, as well as an adjustable trim for accenting specific retail products or task needs.

Beyond aesthetics, the choice of the Halo ML56 LED will also drastically increase the venue's energy efficiency. With a powerful 900 lumens, it has a wattage consumption of only 13.4 watts. Calculating a one year return on investment, The Abbey will save 3,400 watts or \$2,090 yearly in electrical costs, in comparison to the traditional 75-watt PAR30 source commonly used in this type of application.

The lighting transformation has been deemed a major success by the facility's owner, meeting the goals of creating an open, welcoming space for The Abbey customers and achieving additional savings in the process.



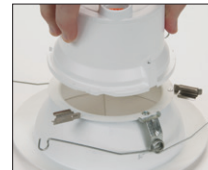
Multiple 5" and 6" baffle, reflector and eyeball options allow the Halo ML56 LED downlighting system to be used in a variety of interior spaces. Choose the desired trim size, finish and style to meet the needs of the application.

- Wide selection of 5" and 6" precision-formed aluminum reflectors, baffles and directional eyeballs with high-quality fit and finish
- Polymer, non-electrically conductive "Dead Front" baffles are wet location listed for use with 600 series LED modules.
- Reflector and baffle trims are wet location listed for shower applications. (Eyeball trims are damp location listed.)
- Reflector and baffle trims make ML56 AIR-TITE for compliance to applicable state and local codes, and make any compatible housing AIR-TITE.
- Accessory 5" and 6" oversize trim rings
- ML56 LED trims offer ENERGY STAR® certification when used with designated Halo ML56 LED light modules*
- ML56 LED can be used to meet State of California Title 24, as certified to the California Title 20 appliance efficiency database (when used with designated trims)*
- ML56 LED can also be used for Washington State Energy Code (WSEC), and International Energy Conservation Code (IECC) High Efficacy requirements when used with designated Halo LED modules*

*Refer to Compliance summary in this document. Refer to ENERGY STAR® Certified Products List and California Title 20 Appliance Database for listings.



Reflector and Baffle Trims



Locate the small post on LED light module and the slot on the trim.



Align post on LED light module with the slot on the trim and place light module onto trim.



Rotate the three side clips into place to secure the trim to the LED light module. Ensure all three clips are securely engaged.



Eyeball Trims



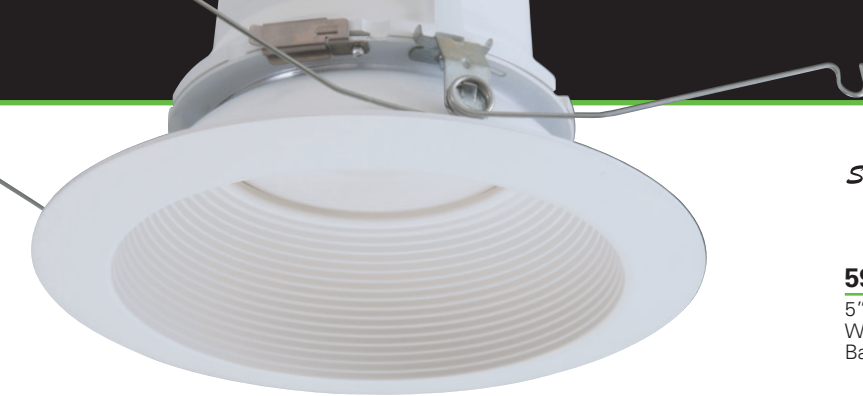
Locate the square notch on the outside rim of the light module and the square post on the eyeball trim.



Align notch on the light module with the post on the trim and place light module onto trim.

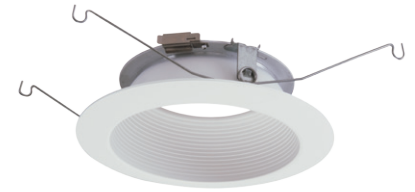


Holding the trim in place, rotate the light module clockwise until firmly secured to the trim.



593WB

5" LED Trim,
White Micro-Step
Baffle and Flange



593BB

5" LED Trim,
Black Micro-Step
Baffle and White Flange



593SNB

5" LED Trim,
Satin Nickel Micro-Step
Baffle and Flange



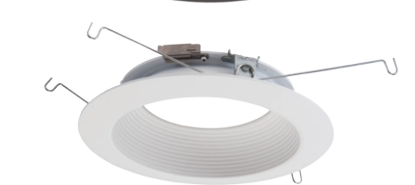
593TBZB

5" LED Trim,
Tuscan Bronze Micro-Step
Baffle and Flange



596WB

5" LED Trim,
White Shallow
Baffle and Flange
(For use with Shallow
and Standard Housings)



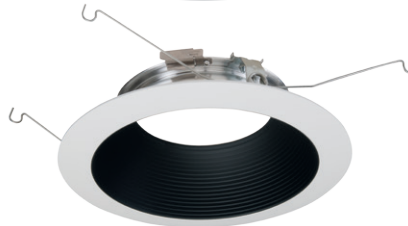
693WB

6" LED Trim,
White Micro-Step
Baffle and Flange



693BB

6" LED Trim,
Black Micro-Step
Baffle and White Flange



693SNB

6" LED Trim,
Satin Nickel Micro-Step
Baffle and Flange



693TBZB

6" LED Trim,
Tuscan Bronze Micro-Step
Baffle and Flange

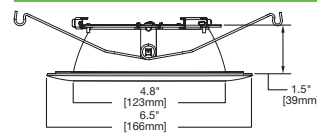


696WB

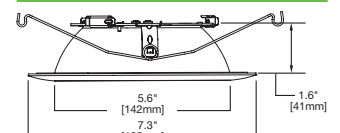
6" LED Trim,
White Shallow
Baffle and Flange
(For use with Shallow
and Standard Housings)



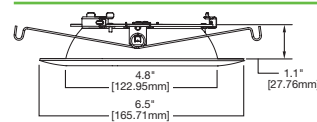
593



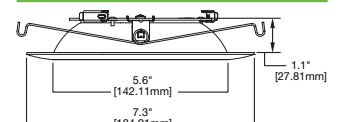
693



593



696



Consult ML56 LED light module specification sheets for applicable trim listings with respective 600 Series, 900 Series and 1200 Series.



592W

5" LED Trim,
White Reflector
and Flange



692W

6" LED Trim,
White Reflector
and Flange



592SC

5" LED Trim,
Specular Reflector
and White Flange



692SC

6" LED Trim,
Specular Reflector
and White Flange



592H

5" LED Trim,
Haze Reflector
and White Flange

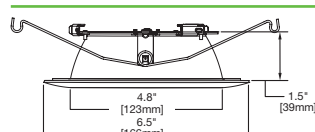


692H

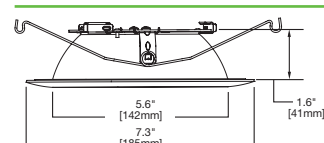
6" LED Trim,
Haze Reflector
and White Flange



592



692



Consult ML56 LED light module specification sheets for applicable trim listings with respective 600 Series, 900 Series and 1200 Series.



Semi-Regressed Eyeballs



Adjustable low profile eyeballs provide directional lighting with tilt 0 - 30 degrees, and rotation capable up to 360 degrees. Symmetrical torsion springs allow placement at 0 and 180 degrees for full rotation and complete beam coverage. The low-profile design offers a subtle ceiling presence.

694WB

6" LED Directional Trim, White Eyeball, Baffle and Flange



694SNB

6" LED Directional Trim, Satin Nickel Eyeball, Baffle and Flange



694TBZB

6" LED Directional Trim, Tuscan Bronze Eyeball, Baffle and Flange



594WB

5" LED Directional Trim, White Eyeball, Baffle and Flange



594SNB

5" LED Directional Trim, Satin Nickel Eyeball, Baffle and Flange

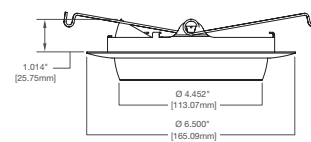


594TBZB

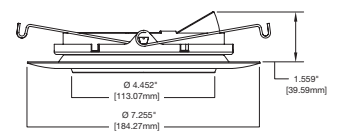
5" LED Directional Trim, Tuscan Bronze Eyeball, Baffle and Flange



594



694



Consult ML56 LED light module specification sheets for applicable trim listings with respective 600 Series, 900 Series and 1200 Series.



595WW

5" LED Trim,
Wall Wash - Specular
Reflector, Repositionable
Specular Kick Reflector,
White Flange

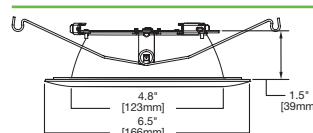


695WW

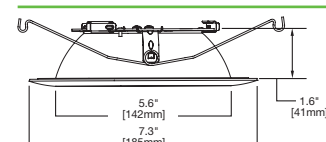
6" LED Trim,
Wall Wash - Specular
Reflector, Repositionable
Specular Kick Reflector,
White Flange



595WW



695WW



Consult ML56 LED light module specification sheets for applicable trim listings with respective 600 Series, 900 Series and 1200 Series.



Repositionable Kick Reflector



The Halo exclusive Repositionable Kick Reflector is included with the 595 and 695 Series LED downlight wall wash trims. The specular clear “kick” reflector provides the wall wash optical element. The kick reflector attaches to the trim with magnets so it is removable and repositionable.

The kick reflector may be placed to any position within the 360 degree trim aperture to allow fine-tuning adjustment of the wall wash effect, as well as easy cleaning of the trim. The accessory WW595SC and WW695SC kick reflectors are sold separately for use when double or corner wall wash is needed, or for replacement of original kick reflector included with the trim.

Ordering Information

WW595SC	Wall wash insert, kick reflector for 595WW (one included with trim) double or corner wall wash
WW695SC	Wall wash insert, kick reflector for 695WW (one included with trim) double or corner wall wash

Non-Conductive "Dead Front" Baffles



Showerlight

ML6

591WB

5" LED Trim,
Polymer "Dead-Front";
Shallow White Baffle
and Flange
(For use with Shallow
and Standard Housings.)
Use with 600 Series
ML56 light modules only.



Showerlight

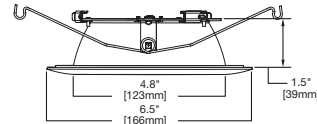
ML6

691WB

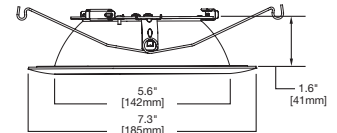
6" LED Trim,
Polymer "Dead-Front";
Shallow White Baffle
and Flange
(For use with Shallow
and Standard Housings.)
Use with 600 Series
ML56 light modules only.



591



691



Consult ML56 LED light module specification sheets for applicable trim listings with respective 600 Series, 900 Series and 1200 Series.



Oversize Trim Rings

TRM590WH

5" LED oversize trim ring



TRM690WH

6" LED oversize trim ring



Ordering Information

TRM590WH 5" LED oversize trim ring for use with 59x series trims, white, 6.3" I.D., 7.5" O.D. Ring slips over LED trim. Inset allows 5" trim to fit into oversize ring for an even trim surface.

TRM690WH 6" LED oversize trim ring for use with 69x series trims, white, 6.9" I.D., 9.5" O.D. Ring slips over LED trim. Inset allows 6" trim to fit into oversize ring for an even trim surface.



Halo LED Housings

The ML56 system is cULus Listed with Halo 5" and 6" new construction and remodel dedicated LED housings. The combination of ML56 with a Halo LED housing creates a code-compliant, high-efficiency luminaire.

The ML56 trim size (5" or 6") corresponds with the housing aperture selected.



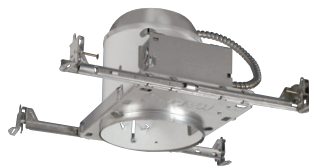
H750ICAT

6" LED, IC, AIR-TITE,
New Construction Housing



H750RICAT

6" LED, IC, AIR-TITE,
Remodel Housing



H750T

6" LED, Non-IC,
New Construction Housing



H750TCP

6" LED, Non-IC,
New Construction/Remodel
Chicago Plenum Housing



H2750ICAT

6" LED, Shallow, IC, AIR-TITE,
New Construction Housing
(Use with 691x, 694x, 696x trims only)



H550ICAT

5" LED, IC, AIR-TITE,
New Construction Housing



H550RICAT

5" LED, IC, AIR-TITE,
Remodel Housing



ML7E26RFK

6" LED Retrofit Enclosure with
E26 Screw Base for
Open Frame Retrofits



ML7BXFK

6" LED Retrofit Enclosure with
Hard-wired BX Connection for
Open Frame Retrofits

ML56 Installation in LED Housings



Attach LED connector and connector cap to the ML56 LED light module.
Note: Attach trim to module before making the LED connection.



Guide the ML56 LED light module into the recessed housing.



Squeeze and insert torsion springs in the torsion spring receivers of the recessed housing.

For reference only.
Refer to detailed instructions included with the product.

Consult ML56 LED light module specification sheets for applicable trim listings with respective 600 Series, 900 Series and 1200 Series.

Halo Housing Compatibility

Halo LED Light Module

The ML56 LED light module - trim combination is cULus Listed or UL Classified for use with any 5" or 6" diameter recessed housing constructed of steel or aluminum with an internal volume that exceeds 115 in³ in addition to those noted below.

Halo Incandescent Housings

The ML56 system light modules and designated trims are cULus Listed with 5" and 6" Halo and All-Pro incandescent housings for retrofit, remodel or new construction with screw base adapter included with the ML56LED modules.

Halo 6" Standard Housings

H7ICAT	6" Insulated Ceiling, AIR-TITE New Construction Housing
H7RICAT	6" Insulated Ceiling, AIR-TITE Remodel Housing
H7ICT	6" Insulated Ceiling, New Construction Housing
H7RICT	6" Insulated Ceiling, Remodel Housing
H7ICATNB	6" Insulated Ceiling, AIR-TITE New Construction Housing, No Socket Bracket
H7ICTNB	6" Insulated Ceiling, New Construction Housing, No Socket Bracket
H7T	6" Non-IC, New Construction Housing
H7RT	6" Non-IC, Remodel Housing
H7TNB	6" Non-IC, New Construction Housing, No Socket Bracket
H7TCP	6" Non-IC, Chicago Plenum, New Construction/Remodel Housing
H7UICAT	6" Insulated Ceiling, Universal New Construction Housing
H7UICAT	6" Insulated Ceiling, Universal, AIR-TITE, New Construction Housing

Halo 6" Shallow Housings

H27ICAT	6" Shallow, Insulated Ceiling, AIR-TITE New Construction (Use with 691X, 694X, 696X trims only)
H27RICAT	6" Shallow, Insulated Ceiling, AIR-TITE Remodel Housing (Use with 691X, 694X, 696X trims only)
H27ICT	6" Shallow, Insulated Ceiling, New Construction Housing (Use with 691X, 694X, 696X trims only)
H27RICT	6" Shallow, Insulated Ceiling, Remodel Housing (Use with 691X, 694X, 696X trims only)
H27T	6" Shallow, Non-IC, New Construction Housing (Use with 691X, 694X, 696X trims only)
H27RT	6" Shallow, Non-IC, Remodel Housing (Use with 691X, 694X, 696X trims only)

Halo 5" Standard Housings

H5ICAT	5" Insulated Ceiling, AIR-TITE New Construction Housing
H5RICAT	5" Insulated Ceiling, AIR-TITE Remodel Housing
H5T	5" Non-IC, New Construction Housing
H5RT	5" Non-IC, Remodel Housing
H5TM	5" Non-IC, New Construction Housing (Canada)

Halo 5" Shallow Housings

H25ICAT	5" Shallow, Insulated Ceiling, AIR-TITE New Construction (Use with 591X, 594X, 596X trims only)
----------------	---

Consult ML56 LED light module specification sheets for applicable trim listings with respective 600 Series, 900 Series and 1200 Series.

All-Pro Housing Compatibility

All-Pro 6" Standard Housings

E1700AT	6" Insulated Ceiling, AIR-TITE New Construction Housing
E1700RAT	6" Insulated Ceiling, AIR-TITE Remodel Housing
E1700	6" Insulated Ceiling, New Construction Housing
E1700R	6" Insulated Ceiling, Remodel Housing
E1700ATNB	6" Insulated Ceiling, AIR-TITE New Construction Housing, No Socket Bracket
E1700NB	6" Insulated Ceiling, New Construction Housing, No Socket Bracket
E1700U	6" Insulated Ceiling, Universal New Construction Housing
E1700UAT	6" Insulated Ceiling, Universal, AIR-TITE, New Construction Housing
ET700	6" Non-IC, New Construction Housing
ET700R	6" Non-IC, Remodel Housing

All-Pro 6" Shallow Housings

E12700AT	6" Shallow, Insulated Ceiling, AIR-TITE New Construction (Use with 691X, 694X, 696X trims only)
E12700	6" Shallow, Insulated Ceiling, New Construction Housing (Use with 691X, 694X, 696X trims only)
E12700R	6" Shallow, Insulated Ceiling, AIR-TITE Remodel Housing (Use with 691X, 694X, 696X trims only)
ET2700	6" Shallow, Non-IC, New Construction Housing (Use with 691X, 694X, 696X trims only)
ET2700R	6" Shallow, Non-IC, Remodel Housing (Use with 691X, 694X, 696X trims only)

All-Pro 5" Standard Housings

E1500AT	5" Insulated Ceiling, AIR-TITE, New Construction Housing
ET500	5" Non-IC, New Construction Housing
E1500RAT	5" Insulated Ceiling, AIR-TITE, Remodel Housing
ET500R	5" Non-IC, Remodel Housing



Insert orange LED connector into orange socket in the module.



Slide connector cap down over the LED connector.



Twist cap clockwise to lock.

Housing Compatibility

The ML56 LED light module - trim combination is cULus Listed or UL Classified for use with any 5" or 6" diameter recessed housing constructed of steel or aluminum with an internal volume that exceeds 115 in³ in addition to those noted below.

The ML56 system is UL Classified for retrofit in select 5" and 6" incandescent housings by others.

6" Housings	600	900	1200
Juno Standard Housings IC22, IC22R, IC22W, IC22S, IC23, IC23W, TC2, TC2R, IC2	X	X	X
Juno Shallow Housings (use with 691X, 694X, 696X trims only) C21, IC21R	X	X	
Capri Standard Housings CR1, PR1, QL1	X	X	X
Capri Shallow Housings (use with 691X, 694X, 696X trims only) R9ASIC/PS9RM	X	X	
Elco HL7ICA (EL7ICA)	X	X	X
Lithonia Lighting Standard Housings LC6, L7X	X	X	X
Lithonia Lighting Shallow Housing (use with 691X, 694X, 696X trims only) L7XP	X	X	
Thomas PS1	X	X	X
Commercial Electric C7ICA, H3	X	X	X
Progress Standard Housing P87-AT†	X	X	X
Progress Shallow Housing (use with 691X, 694X, 696X trims only) P86TG†	X	X	
Lightolier 1104ICSt, 1104ICRT	X	X	X

5" Housings	600	900	1200
Juno Standard and Shallow Housings (use with 591X, 594X, 596X trims only) IC20, IC25S, IC25W, TC20	X	X	

† For 600 series and 900 series replace of torsion springs with friction clips. Friction clip kit sold separately: ML56CLIP.
For 1200 Series install the Retrofit Adapter Band in housing.

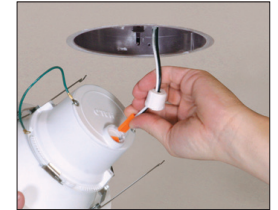
Order separately: ML7RAB.

Juno®, Capri, Lightolier®, Lithonia Lighting®, Thomas® Lighting, Elco Lighting®, Progress® Lighting and Commercial Electric™ and their product brand names, where identified above, are tradenames or trademarks of each respective company and Cooper makes no representations on these trademarks.

Retrofit Installation



Socket in housing must be free. Remove socket mounting bracket and plate if present. Turn the edison screw base adapter into the recessed housing socket.



Plug LED connector and connect cap to the ML56 LED light module.

Note: Attach trim to module before making LED connection.



Squeeze and insert torsion spring in the torsion spring receivers of the recessed housing.



Guide the ML56 LED light module into the recessed housing.

Installation overview for reference. Refer to detailed instructions included with the product.

ML56CLIP

6" friction clip mounting kit for use when installing ML56 600 Series and 900 Series light modules into non-torsion spring 6" housings. (Not for use with 1200 Series light modules - use ML7RAB)



ML7RAB

Retrofit Adapter Band for use when installing ML56 600 Series, 900 Series and 1200 Series light modules into non-torsion spring 6" housings. ML7RAB kit includes parts to adapt four recessed housings.



ML56 Module Ordering Information

600 Series – 80CRI

Catalog No.	Series	CRI	CCT
ML5606827	600	80	2700
ML5606830	600	80	3000
ML5606835	600	80	3500
ML5606840	600	80	4000

900 Series – 80CRI

Catalog No.	Series	CRI	CCT
ML5609827	900	80	2700
ML5609830	900	80	3000
ML5609835	900	80	3500
ML5609840	900	80	4000

1200 Series – 80CRI

Catalog No.	Series	CRI	CCT
ML5612827	1200	80	2700
ML5612830	1200	80	3000
ML5612835	1200	80	3500
ML5612840	1200	80	4000

600 Series – 90CRI

Catalog No.	Series	CRI	CCT
ML5606927	600	90	2700
ML5606930	600	90	3000
ML5606935	600	90	3500
ML5606940	600	90	4000

900 Series – 90CRI

Catalog No.	Series	CRI	CCT
ML5609927	900	90	2700
ML5609930	900	90	3000
ML5609935	900	90	3500
ML5609940	900	90	4000

1200 Series – 90CRI

Catalog No.	Series	CRI	CCT
ML5612927	1200	90	2700
ML5612930	1200	90	3000
ML5612935	1200	90	3500
ML5612940	1200	90	4000

ML56 Trim Ordering Information

590 Series

5" LED Trims

591WB	5" LED Trim, Polymer "Dead-Front," Shallow White Baffle and Flange – Shallow and Standard housings (For use with 600 Series LED Light Modules only)
592SC	5" LED Trim, Specular Reflector and White Flange
592H	5" LED Trim, Haze Reflector and White Flange
592W	5" LED Trim, White Reflector and Flange
593WB	5" LED Trim, White Micro-Step Baffle and Flange
593BB	5" LED Trim, Black Micro-Step Baffle and White Flange
593SNB	5" LED Trim, Satin Nickel Micro-Step Baffle and Flange
593TBZB	5" LED Trim, Tuscan Bronze Micro-Step Baffle and Flange
594WB	5" LED Directional Trim, White Eyeball, Baffle and Flange – Shallow and Standard Housings
594SNB	5" LED Directional Trim, Satin Nickel Eyeball, Baffle and Flange – Shallow and Standard Housings
594TBZB	5" LED Directional Trim, Tuscan Bronze Eyeball, Baffle and Flange – Shallow and Standard Housings
595WW	5" LED Trim, Wall Wash - Specular Reflector, Repositionable Specular Kick Reflector, White Flange
596WB	5" LED Trim, White Shallow Baffle and Flange – Shallow and Standard Housings

690 Series

6" LED Trims

691WB	6" LED Trim, Polymer "Dead-Front," White Shallow Baffle and Flange – Shallow and Standard housings (For use with 600 Series LED Light Modules only)
692SC	6" LED Trim, Specular Reflector and White Flange
692H	6" LED Trim, Haze Reflector and White Flange
692W	6" LED Trim, White Reflector and Flange
693WB	6" LED Trim, White Micro-Step Baffle and Flange
693BB	6" LED Trim, Black Micro-Step Baffle and White Flange
693SNB	6" LED Trim, Satin Nickel Micro-Step Baffle and Flange
693TBZB	6" LED Trim, Tuscan Bronze Micro-Step Baffle and Flange
694WB	6" LED Directional Trim, White Eyeball, Baffle and Flange – Shallow and Standard Housings
694SNB	6" LED Directional Trim, Satin Nickel Eyeball, Baffle and Flange – Shallow and Standard Housings
694TBZB	6" LED Directional Trim, Tuscan Bronze Eyeball, Baffle and Flange – Shallow and Standard Housings
695WW	6" LED Trim, Wall Wash - Specular Reflector, Repositionable Specular Kick Reflector, White Flange
696WB	6" LED Trim, White Shallow Baffle and Flange – for use with Shallow and Standard Housings



Consult ML56 LED light module specification sheets for applicable trim listings with respective 600 Series, 900 Series and 1200 Series.

ML56 System Accessories

WW595SC	Wall Wash Insert - Kick Reflector for 595WW (one included with trim) Double or Corner Wall Wash
WW695SC	Wall Wash Insert - Kick Reflector for 695WW (one included with trim) Double or Corner Wall Wash
TRM590WH	5" LED Oversize Trim Ring for use with 59" Series Trims, White
TRM690WH	6" LED Oversize Trim Ring for use with 69" Series Trims, White
ML56CLIP	Friction Clip Mounting Kit - For non-torsion spring housings, 6" clips (For use with 6" 600 Series and 900 Series modules.)
ML7RAB	Retrofit Adapter Band. Install in non-torsion spring 6" housings. (For use with all ML56 modules and must be used with 1200 Series modules, kit adapts 4 housings.)

1200 Series Accessories

BFR56NFL	Beam forming reflector kit, narrow flood, 25° nominal
BFR56MH	Media holder, accepts one 3.45" lens. (Requires BFR56NFL and L345SF.)
L345SF	3.45" diameter soft focus lens. (Requires BFR56NFL and BFR56MH.)

Lighting Control Solutions

AL All Load Dimmers

Eaton's AL Series dimmers offer versatile options to set the mood and reduce energy consumption. These Halo ML56 series compatible LED dimmers are ideal for both residential and light commercial applications and are compatible with decorator style devices and wallplates.



ACCELL
(AAL06)



DEVINE
(DAL06P)



SKYE
(SAL06P)



TRACE
(TAL06P)



Visit www.cooperwiringdevices.com/ALSeries for more information.

The ENERGY STAR® Certification mark is designed to identify and promote energy efficient products and buildings. Eaton's Cooper Lighting is proud to have a wide range of certified products including the Halo ML56 LED Downlighting System.

www.energystar.gov



International Energy Conservation Code (IECC) defines building energy standards as an integral part of a comprehensive building construction code from the International Code Council (ICC). Lighting standards are applied to residential and commercial construction. The residential code is specific in the definition of high-efficacy luminaires and their application. Eaton's Cooper Lighting Halo brand has a wide selection of luminaires that meet the requirements of IECC, including ML56 LED.

www.iccsafe.org



California Energy Commission's Title 24 Building Energy Efficiency Standards (T24) establishes the building energy code in California for residential and non-residential construction. Lighting has specific regulations that define performance parameters for energy-efficient lighting, and the residential standards in particular are specific in the definition of high-efficacy luminaires and their application. Eaton's Cooper Lighting Halo brand offers a wide selection of luminaires designed to meet the requirements of

Title 24 including the residential requirement for certification to California Title 20 appliance efficiency database.

www.energy.ca.gov/title24



Washington State Energy Code (WSEC) governs building energy efficiency. The WSEC applies to all authorities in the State of Washington for residential construction, and applies everywhere in the state for non-residential construction. And in Seattle, municipal code is in effect. Residential lighting regulation has requirements for high efficacy luminaires and their application. Eaton's Cooper Lighting Halo brand has a wide selection of luminaires that meet the requirements of WSEC.

<http://apps.leg.wa.gov/WAC/default.aspx?cite=513>



RoHS Directive-Restriction of Hazardous Substances. This global initiative seeks to eliminate hazardous materials in products. Key materials being eliminated from products through RoHS include: cadmium, mercury and lead among others.



Eaton's Cooper Lighting Halo brand luminaires are designed and manufactured in accordance with the specifications outlined in Underwriters Laboratories, Standard for Safety – Luminaires 1598. These luminaires additionally comply with the applicable requirements for such luminaires found within the National Electrical Code (NEC), NFPA 70.

Products bearing the UL Listed, cULus Listed, and UL Classified marks indicate that the luminaires have been evaluated by Underwriters Laboratories, and are found to be compliant with the product specific requirements for the United States and Canada.

www.ul.com



ML56 Series Matrix

600 Series / 80 CRI

	Module	ML5606827	ML5606830	ML5606835	ML5606840
5"	593BB	427.3	440.5	486.0	500.5
6"	693BB	473.0	487.6	537.9	554.0
5"	593TBZB	479.5	494.3	545.3	561.6
6"	693TBZB	496.9	512.2	565.1	582.0
5"	593SNB	531.7	548.1	604.7	622.7
6"	693SNB	549.1	566.0	624.5	643.1
5"	592H	599.1	617.6	681.4	701.7
5"	592W	617.6	636.6	702.4	723.3
5"	593WB	628.4	647.8	714.7	736.1
5"	592SC	632.8	652.3	719.7	741.2
6"	692H	635.0	654.6	722.2	743.7
5"	595WW	637.1	656.8	724.6	746.3
6"	695WW	638.2	657.9	725.9	747.5
6"	693WB	648.0	668.0	737.0	759.0
6"	692SC	648.0	668.0	737.0	759.0
6"	692W	650.2	670.2	739.5	761.5
5"	596WB	662.1	682.6	753.1	775.6
6"	694TBZB	667.6	688.2	759.3	781.9
5"	594TBZB	668.7	689.3	760.5	783.2
6"	696WB	673.0	693.8	765.4	788.3
6"	694SNB	681.7	702.7	775.3	798.5
5"	594SNB	683.9	705.0	777.8	801.0
6"	694WB	704.5	726.3	801.3	825.2
5"	594WB	706.7	728.5	803.8	827.8
5"	594WB-30	685.0	706.1	779.0	802.3
6"	694WB-30	654.5	674.7	744.4	766.6

Green = ENERGY STAR® certified. Refer to ENERGY STAR® certified products list. For other compliance standards refer to compliance matrix section.

ML56 Series Matrix

600 Series / 90 CRI

	Module	ML5606927	ML5606930	ML5606935	ML5606940
5"	593BB	393.0	431.9	443.1	467.5
6"	693BB	435.0	478.1	490.5	517.5
5"	593TBZB	441.0	484.7	497.2	524.6
6"	693TBZB	457.0	502.2	515.3	543.6
5"	593SNB	489.0	537.4	551.4	581.7
6"	693SNB	505.0	555.0	569.4	600.7
5"	592H	551.0	605.5	621.3	655.5
5"	592W	568.0	624.2	640.4	675.7
5"	593WB	578.0	635.2	651.7	687.6
5"	592SC	582.0	639.6	656.2	692.3
6"	692H	584.0	641.8	658.5	694.7
5"	595WW	586.0	644.0	660.7	697.1
6"	695WW	587.0	645.1	661.9	698.3
6"	693WB	596.0	655.0	672.0	709.0
6"	692SC	596.0	655.0	672.0	709.0
6"	692W	598.0	657.2	674.3	711.4
5"	596WB	609.0	669.3	686.7	724.5
6"	694TBZB	614.0	674.8	692.3	730.4
5"	594TBZB	615.0	675.9	693.4	731.6
6"	696WB	619.0	680.3	697.9	736.4
6"	694SNB	627.0	689.1	707.0	745.9
5"	594SNB	629.0	691.3	709.2	748.3
6"	694WB	648.0	712.1	730.6	770.9
5"	594WB	650.0	714.3	732.9	773.2
5"	594WB-30	630.0	692.4	710.3	749.4
6"	694WB-30	602.0	661.6	678.8	716.1

Green = ENERGY STAR® certified. Refer to ENERGY STAR® certified products list. For other compliance standards refer to compliance matrix section.



ML56 Series Matrix

900 Series / 80 CRI

Module	ML5609827	ML5609830	ML5609835	ML5609840
5" 593BB	602.9	651.3	661.0	674.5
6" 693BB	676.2	730.5	741.3	756.5
5" 593TBZB	686.3	741.4	752.4	767.8
6" 693TBZB	714.1	771.4	782.9	799.0
5" 593SNB	757.1	817.8	830.0	847.0
6" 693SNB	789.9	853.3	866.0	883.8
5" 592H	846.8	914.8	928.4	947.4
5" 593WB	887.2	958.5	972.7	992.7
5" 592W	894.8	966.7	981.0	1001.2
5" 595WW	916.3	989.9	1004.6	1025.2
5" 592SC	917.6	991.3	1006.0	1026.6
6" 692H	921.4	995.3	1010.1	1030.9
6" 695WW	922.6	996.7	1011.5	1032.3
6" 693WB	934.0	1009.0	1024.0	1045.0
6" 692SC	946.6	1022.7	1037.9	1059.1
5" 596WB	946.6	1022.7	1037.9	1059.1
6" 692W	947.9	1024.0	1039.2	1060.6
5" 594TBZB	954.2	1030.8	1046.2	1067.6
6" 694TBZB	959.3	1036.3	1051.7	1073.3
5" 594SNB	959.3	1036.3	1051.7	1073.3
6" 696WB	975.7	1054.1	1069.7	1091.7
6" 694SNB	977.0	1055.4	1071.1	1093.1
6" 694WB	1017.4	1099.1	1115.5	1138.3
5" 594WB	1018.7	1100.5	1116.8	1139.7
5" 594WB-30	987.1	1066.3	1082.2	1104.4
6" 694WB-30	959.3	1036.3	1051.7	1073.3

Green = ENERGY STAR® certified. Refer to ENERGY STAR® certified products list. For other compliance standards refer to compliance matrix section.

ML56 Series Matrix

900 Series / 90 CRI

Module	ML5609927	ML5609930	ML5609935	ML5609940
5" 593BB	477.0	543.5	562.8	595.1
6" 693BB	535.0	609.6	631.3	667.5
5" 593TBZB	543.0	618.7	640.7	677.5
6" 693TBZB	565.0	643.7	666.7	704.9
5" 593SNB	599.0	682.5	706.8	747.3
6" 693SNB	625.0	712.1	737.5	779.8
5" 592H	670.0	763.4	790.6	835.9
5" 593WB	702.0	799.8	828.3	875.8
5" 592W	708.0	806.7	835.4	883.3
5" 595WW	725.0	826.0	855.5	904.5
5" 592SC	726.0	827.2	856.7	905.8
6" 692H	729.0	830.6	860.2	909.5
6" 695WW	730.0	831.7	861.4	910.8
6" 693WB	739.0	842.0	872.0	922.0
6" 692SC	749.0	853.4	883.8	934.5
5" 596WB	749.0	853.4	883.8	934.5
6" 692W	750.0	854.5	885.0	935.7
5" 594TBZB	755.0	860.2	890.9	942.0
6" 694TBZB	759.0	864.8	895.6	947.0
5" 594SNB	759.0	864.8	895.6	947.0
6" 696WB	772.0	879.6	910.9	963.2
6" 694SNB	773.0	880.7	912.1	964.4
6" 694WB	805.0	917.2	949.9	1004.3
5" 594WB	806.0	918.3	951.1	1005.6
5" 594WB-30	781.0	889.9	921.6	974.4
6" 694WB-30	759.0	864.8	895.6	947.0

Green = ENERGY STAR® certified. Refer to ENERGY STAR® certified products list. For other compliance standards refer to compliance matrix section.



ML56 Series Matrix

1200 Series / 80 CRI

Module	ML5612827	ML5612830	ML5612835	ML5612840
5" 593BB	900.9	1014.1	1027.9	1109.7
6" 693BB	1008.2	1134.9	1150.3	1241.9
5" 593TBZB	1017.8	1145.8	1161.3	1253.8
6" 693TBZB	1048.0	1179.7	1195.7	1290.9
5" 593SNB	1115.5	1255.8	1272.8	1374.1
6" 693SNB	1162.5	1308.7	1326.5	1432.1
5" 592H	1285.6	1447.2	1466.8	1583.6
5" 593WB	1310.9	1475.7	1495.7	1614.8
5" 592SC	1327.8	1494.7	1515.0	1635.6
5" 592W	1331.4	1498.8	1519.1	1640.0
5" 595WW	1336.2	1504.2	1524.6	1646.0
6" 695WW	1337.4	1505.6	1526.0	1647.5
6" 692H	1342.2	1511.0	1531.5	1653.4
6" 692W	1363.9	1535.4	1556.2	1680.1
6" 692SC	1368.8	1540.9	1561.7	1686.1
6" 693WB	1376.0	1549.0	1570.0	1695.0
5" 596WB	1380.8	1554.4	1575.5	1700.9
6" 694TBZB	1385.6	1559.9	1581.0	1706.9
6" 696WB	1411.0	1588.4	1609.9	1738.1
5" 594TBZB	1412.2	1589.7	1611.3	1739.6
6" 694SNB	1425.4	1604.7	1626.4	1755.9
5" 594SNB	1447.2	1629.1	1651.2	1782.6
6" 694WB	1468.9	1653.5	1676.0	1809.4
5" 594WB	1477.3	1663.0	1685.6	1819.8
5" 594WB-30	1396.5	1572.1	1593.4	1720.3
6" 694WB-30	1374.8	1547.6	1568.6	1693.5

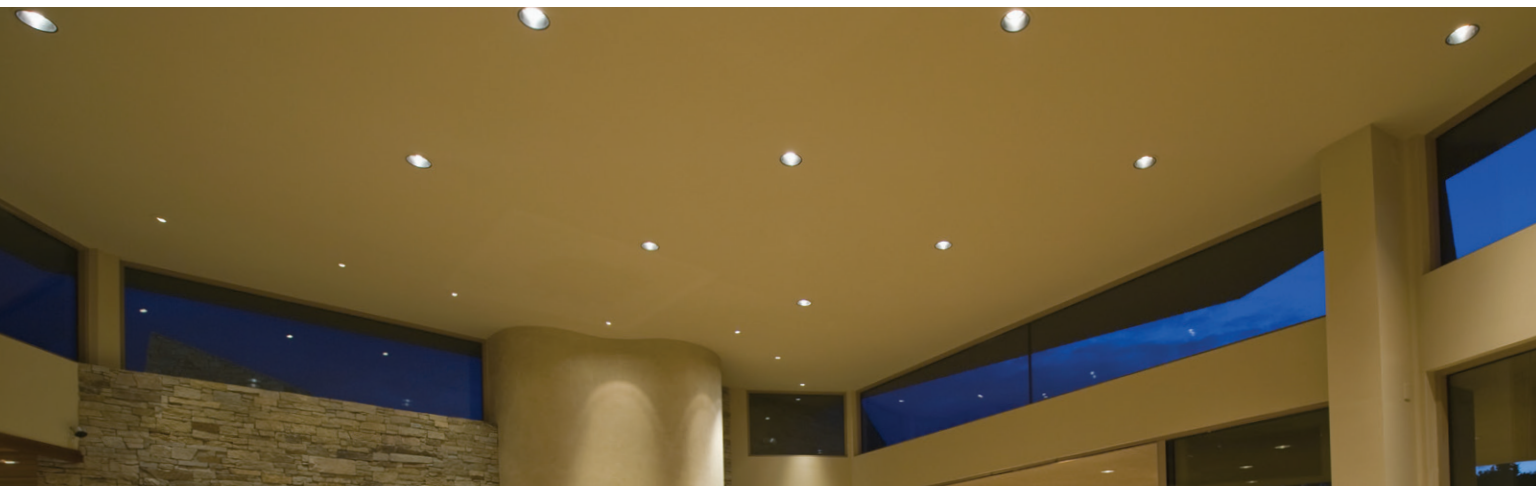
Green = ENERGY STAR® certified. Refer to ENERGY STAR® certified products list. For other compliance standards refer to compliance matrix section.

ML56 Series Matrix

1200 Series / 90 CRI

Module	ML5612927	ML5612930	ML5612935	ML5612940
5" 593BB	747.0	772.5	812.5	899.5
6" 693BB	836.0	864.6	909.3	1006.7
5" 593TBZB	844.0	872.8	918.0	1016.4
6" 693TBZB	869.0	898.7	945.2	1046.5
5" 593SNB	925.0	956.6	1006.1	1113.9
6" 693SNB	964.0	997.0	1048.5	1160.9
5" 592H	1066.0	1102.4	1159.4	1283.7
5" 593WB	1087.0	1124.2	1182.3	1309.0
5" 592SC	1101.0	1138.6	1197.5	1325.8
5" 592W	1104.0	1141.7	1200.8	1329.4
5" 595WW	1108.0	1145.9	1205.1	1334.3
6" 695WW	1109.0	1146.9	1206.2	1335.5
6" 692H	1113.0	1151.0	1210.5	1340.3
6" 692W	1131.0	1169.7	1230.1	1362.0
6" 692SC	1135.0	1173.8	1234.5	1366.8
6" 693WB	1141.0	1180.0	1241.0	1374.0
5" 596WB	1145.0	1184.1	1245.4	1378.8
6" 694TBZB	1149.0	1188.3	1249.7	1383.6
6" 696WB	1170.0	1210.0	1272.5	1408.9
5" 594TBZB	1171.0	1211.0	1273.6	1410.1
6" 694SNB	1182.0	1222.4	1285.6	1423.4
5" 594SNB	1200.0	1241.0	1305.2	1445.0
6" 694WB	1218.0	1259.6	1324.7	1466.7
5" 594WB	1225.0	1266.9	1332.4	1475.2
5" 594WB-30	1158.0	1197.6	1259.5	1394.5
6" 694WB-30	1140.0	1179.0	1239.9	1372.8

Green = ENERGY STAR® certified. Refer to ENERGY STAR® certified products list. For other compliance standards refer to compliance matrix section.



ML56 Compliance Matrix

1200 Series / 80 CRI

Module	ML5612827	ML5612830	ML5612835	ML5612840
593BB	ES, T24NR, WSEC, IECC	ES, T24NR, WSEC, IECC	ES, T24NR, WSEC, IECC	ES, T24NR, WSEC, IECC
693BB	ES, T24NR, WSEC, IECC	ES, T24NR, WSEC, IECC	ES, T24NR, WSEC, IECC	ES, T24NR, WSEC, IECC
593TBZB	ES, T24NR, WSEC, IECC	ES, T24NR, WSEC, IECC	ES, T24NR, WSEC, IECC	ES, T24NR, WSEC, IECC
693TBZB	ES, T24NR, WSEC, IECC	ES, T24NR, WSEC, IECC	ES, T24NR, WSEC, IECC	ES, T24NR, WSEC, IECC
593SNB	ES, T24NR, WSEC, IECC	ES, T24NR, WSEC, IECC	ES, T24NR, WSEC, IECC	ES, T24NR, WSEC, IECC
693SNB	ES, T24NR, WSEC, IECC	ES, T24NR, WSEC, IECC	ES, T24NR, WSEC, IECC	ES, T24NR, WSEC, IECC
592H	ES, T24NR, WSEC, IECC	ES, T24NR, WSEC, IECC	ES, T24NR, WSEC, IECC	ES, T24NR, WSEC, IECC
593WB	ES, T24NR, WSEC, IECC	ES, T24NR, WSEC, IECC	ES, T24NR, WSEC, IECC	ES, T24NR, WSEC, IECC
592SC	ES, T24NR, WSEC, IECC	ES, T24NR, WSEC, IECC	ES, T24NR, WSEC, IECC	ES, T24NR, WSEC, IECC
592W	ES, T24NR, WSEC, IECC	ES, T24NR, WSEC, IECC	ES, T24NR, WSEC, IECC	ES, T24NR, WSEC, IECC
595WW	ES, T24NR, WSEC, IECC	ES, T24NR, WSEC, IECC	ES, T24NR, WSEC, IECC	ES, T24NR, WSEC, IECC
695WW	ES, T24NR, WSEC, IECC	ES, T24NR, WSEC, IECC	ES, T24NR, WSEC, IECC	ES, T24NR, WSEC, IECC
692H	ES, T24NR, WSEC, IECC	ES, T24NR, WSEC, IECC	ES, T24NR, WSEC, IECC	ES, T24NR, WSEC, IECC
692W	ES, T24NR, WSEC, IECC	ES, T24NR, WSEC, IECC	ES, T24NR, WSEC, IECC	ES, T24NR, WSEC, IECC
692SC	ES, T24NR, WSEC, IECC	ES, T24NR, WSEC, IECC	ES, T24NR, WSEC, IECC	ES, T24NR, WSEC, IECC
693WB	ES, T24NR, WSEC, IECC	ES, T24NR, WSEC, IECC	ES, T24NR, WSEC, IECC	ES, T24NR, WSEC, IECC
596WB	ES, T24NR, WSEC, IECC	ES, T24NR, WSEC, IECC	ES, T24NR, WSEC, IECC	ES, T24NR, WSEC, IECC
694TBZB	ES, T24NR, WSEC, IECC	ES, T24NR, WSEC, IECC	ES, T24NR, WSEC, IECC	ES, T24NR, WSEC, IECC
696WB	ES, T24NR, WSEC, IECC	ES, T24NR, WSEC, IECC	ES, T24NR, WSEC, IECC	ES, T24NR, WSEC, IECC
594TBZB	ES, T24NR, WSEC, IECC	ES, T24NR, WSEC, IECC	ES, T24NR, WSEC, IECC	ES, T24NR, WSEC, IECC
694SNB	ES, T24NR, WSEC, IECC	ES, T24NR, WSEC, IECC	ES, T24NR, WSEC, IECC	ES, T24NR, WSEC, IECC
594SNB	ES, T24NR, WSEC, IECC	ES, T24NR, WSEC, IECC	ES, T24NR, WSEC, IECC	ES, T24NR, WSEC, IECC
694WB	ES, T24NR, WSEC, IECC	ES, T24NR, WSEC, IECC	ES, T24NR, WSEC, IECC	ES, T24NR, WSEC, IECC
594WB	ES, T24NR, WSEC, IECC	ES, T24NR, WSEC, IECC	ES, T24NR, WSEC, IECC	ES, T24NR, WSEC, IECC
594WB-30	ES, T24NR, WSEC, IECC	ES, T24NR, WSEC, IECC	ES, T24NR, WSEC, IECC	ES, T24NR, WSEC, IECC
694WB-30	ES, T24NR, WSEC, IECC	ES, T24NR, WSEC, IECC	ES, T24NR, WSEC, IECC	ES, T24NR, WSEC, IECC

***Code Descriptions for 80 CRI:**

ES = ENERGY STAR® Certified Luminaire
 T24NR = May be used for California Title 24 Non-Residential LED Luminaire
 IECC = International Energy Conservation Code High Efficacy Luminaire
 WSEC = Washington State Energy Code - High Efficacy Luminaire

ML56 Compliance Matrix

1200 Series / 90 CRI

Module	ML5612927	ML5612930	ML5612935	ML5612940
593BB	WSEC, IECC	WSEC, IECC	ES, T24, WSEC, IECC	ES, T24, WSEC, IECC
693BB	ES, T24, WSEC, IECC	ES, T24, WSEC, IECC	ES, T24, WSEC, IECC	ES, T24, WSEC, IECC
593TBZB	ES, T24, WSEC, IECC	ES, T24, WSEC, IECC	ES, T24, WSEC, IECC	ES, T24, WSEC, IECC
693TBZB	ES, T24, WSEC, IECC	ES, T24, WSEC, IECC	ES, T24, WSEC, IECC	ES, T24, WSEC, IECC
593SNB	ES, T24, WSEC, IECC	ES, T24, WSEC, IECC	ES, T24, WSEC, IECC	ES, T24, WSEC, IECC
693SNB	ES, T24, WSEC, IECC	ES, T24, WSEC, IECC	ES, T24, WSEC, IECC	ES, T24, WSEC, IECC
592H	ES, T24, WSEC, IECC	ES, T24, WSEC, IECC	ES, T24, WSEC, IECC	ES, T24, WSEC, IECC
593WB	ES, T24, WSEC, IECC	ES, T24, WSEC, IECC	ES, T24, WSEC, IECC	ES, T24, WSEC, IECC
592SC	ES, T24, WSEC, IECC	ES, T24, WSEC, IECC	ES, T24, WSEC, IECC	ES, T24, WSEC, IECC
592W	ES, T24, WSEC, IECC	ES, T24, WSEC, IECC	ES, T24, WSEC, IECC	ES, T24, WSEC, IECC
595WW	ES, T24, WSEC, IECC	ES, T24, WSEC, IECC	ES, T24, WSEC, IECC	ES, T24, WSEC, IECC
695WW	ES, T24, WSEC, IECC	ES, T24, WSEC, IECC	ES, T24, WSEC, IECC	ES, T24, WSEC, IECC
692H	ES, T24, WSEC, IECC	ES, T24, WSEC, IECC	ES, T24, WSEC, IECC	ES, T24, WSEC, IECC
692W	ES, T24, WSEC, IECC	ES, T24, WSEC, IECC	ES, T24, WSEC, IECC	ES, T24, WSEC, IECC
692SC	ES, T24, WSEC, IECC	ES, T24, WSEC, IECC	ES, T24, WSEC, IECC	ES, T24, WSEC, IECC
693WB	ES, T24, WSEC, IECC	ES, T24, WSEC, IECC	ES, T24, WSEC, IECC	ES, T24, WSEC, IECC
596WB	ES, T24, WSEC, IECC	ES, T24, WSEC, IECC	ES, T24, WSEC, IECC	ES, T24, WSEC, IECC
694TBZB	ES, T24, WSEC, IECC	ES, T24, WSEC, IECC	ES, T24, WSEC, IECC	ES, T24, WSEC, IECC
696WB	ES, T24, WSEC, IECC	ES, T24, WSEC, IECC	ES, T24, WSEC, IECC	ES, T24, WSEC, IECC
594TBZB	ES, T24, WSEC, IECC	ES, T24, WSEC, IECC	ES, T24, WSEC, IECC	ES, T24, WSEC, IECC
694SNB	ES, T24, WSEC, IECC	ES, T24, WSEC, IECC	ES, T24, WSEC, IECC	ES, T24, WSEC, IECC
594SNB	ES, T24, WSEC, IECC	ES, T24, WSEC, IECC	ES, T24, WSEC, IECC	ES, T24, WSEC, IECC
694WB	ES, T24, WSEC, IECC	ES, T24, WSEC, IECC	ES, T24, WSEC, IECC	ES, T24, WSEC, IECC
594WB	ES, T24, WSEC, IECC	ES, T24, WSEC, IECC	ES, T24, WSEC, IECC	ES, T24, WSEC, IECC
594WB-30	ES, T24, WSEC, IECC	ES, T24, WSEC, IECC	ES, T24, WSEC, IECC	ES, T24, WSEC, IECC
694WB-30	ES, T24, WSEC, IECC	ES, T24, WSEC, IECC	ES, T24, WSEC, IECC	ES, T24, WSEC, IECC

***Code Descriptions for 90 CRI:**

ES = ENERGY STAR® Certified Luminaire
 T24 = Can be used for California Energy Commission Building Energy Efficiency Standards, Title 24 - Residential (and Non-Residential) High Efficacy Luminaires
 Title 20 Certified Residential LED luminaire
 IECC = International Energy Conservation Code "High Efficacy"
 WSEC = Washington State Energy Code - High Efficacy Luminaire

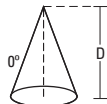
5" Trims • 600 Series • 80 CRI

ML5606830-592SC

Test Number	P130228
Light Module	600 Series, 80CRI
Trim	5" Aperture, Specular Clear Trim
Lumens	652.0
Efficacy	72.5 Lm/W
SC	1.06

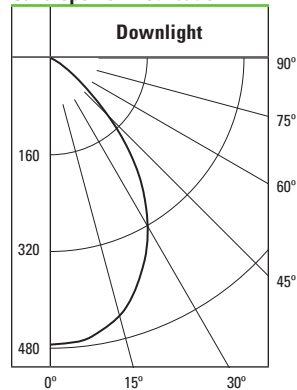


Cone of Light



D	FC	L	W
5.5	15.7	5.8	5.8
7	9.7	7.2	7.2
8	7.4	8.4	8.4
9	5.9	9.4	9.4
10	4.7	10.4	10.4
12	3.3	12.6	12.6

Candlepower Distribution

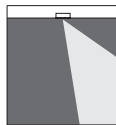


Zonal Lumen Summary

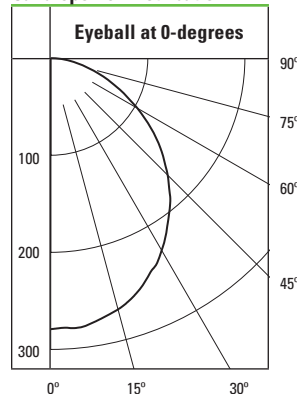
Zone	Lumens	%Fixture
0-30	337	51.7
0-40	502	77
0-60	644	98.7
0-90	652	100
90-180	0	0
0-180	652	100

ML5606830-594WB

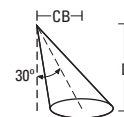
Test Number	P130276
Light Module	600 Series, 80CRI
Trim	5" Aperture, Directional Eyeball
Lumens	729
Efficacy	80.9 Lm/W
SC	1.22



Candlepower Distribution

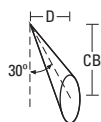


30° Horizontal Plane



D	FC	L	W	CB
5.5	8.1	6.6	6.6	3.2
7	5	8.3	8.4	4
8	3.8	9.6	9.8	4.6
9	3	10.7	11	5.2
10	2.5	12	12.2	5.8
12	1.7	14.3	14.6	6.9

30° Vertical Plane



D	FC	L	W	CB
1'	159.1	1.1	1.2	1.7
2'	39.8	2.2	2.6	3.5
3'	17.7	3.3	3.8	5.2
4'	9.9	4.5	5.2	6.9
5'	6.4	5.6	6.6	8.7
6'	4.4	6.7	7.8	10.4

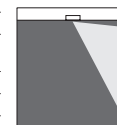
Zonal Lumen Summary

Zone	Lumens	%Fixture
0-30	214	29.4
0-40	346	47.5
0-60	590	81
0-90	729	100
90-180	0	0
0-180	729	100

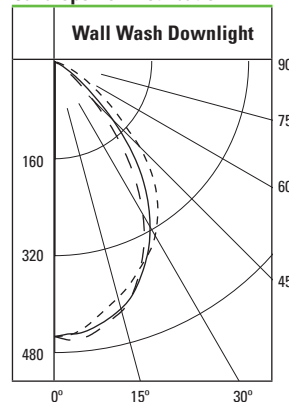
5" Trims • 600 Series • 80 CRI

ML5606830-595WW

Test Number	P130300
Light Module	600 Series, 80CRI
Trim	5" Aperture, Wall Wash with Specular Clear Trim and Specular Clear Kick Reflector
Lumens	657
Efficacy	73 Lm/W
SC	1.1



Candlepower Distribution



Zonal Lumen Summary

Zone	Lumens	%Fixture
0-30	322	49
0-40	485	73.8
0-60	639	97.4
0-90	657	100
90-180	0	0
0-180	657	100

Legend

0-deg:	---	Wall
90-deg:	---	Side
180-deg:	---	Room

Single Unit Footcandles

2.5' From Wall (Distance From Fixture Along Wall)

DD	●	1'	2'	3'	4'	5'	6'
1'	2.8	1.8	0.7	0.2	0.1	0	0
2'	9.4	6.8	3	1	0.3	0.1	0
3'	10.8	8.9	4.8	2	0.7	0.2	0.1
4'	7.6	6.8	4.9	2.7	1.2	0.5	0.2
5'	5	4.6	3.7	2.5	1.5	0.7	0.3
6'	3.4	3.2	2.7	2.1	1.4	0.9	0.5
7'	2.3	2.2	2	1.6	1.2	0.8	0.5
8'	1.7	1.6	1.5	1.2	1	0.8	0.5
9'	1.2	1.2	1.1	1	0.8	0.6	0.5
10'	0.9	0.9	0.9	0.8	0.7	0.5	0.4

Multiple Unit Footcandles

2.5' From Wall (Distance From Fixture Along Wall)

DD	--3'--		--4'--			
1'	3	2.3	3	2.8	1.3	2.8
2'	10.3	9.5	10.3	9.6	5.9	9.6
3'	12.7	14	12.7	11.5	9.7	11.5
4'	10.3	11.9	10.3	8.7	9.7	8.7
5'	7.6	8.6	7.6	6.5	7.5	6.5
6'	5.4	6	5.4	4.8	5.5	4.8
7'	3.9	4.3	3.9	3.5	4	3.5
8'	2.9	3.1	2.9	2.7	3	2.7
9'	2.2	2.4	2.2	2	2.2	2
10'	1.7	1.8	1.7	1.6	1.7	1.6

Multiplier Table

CCT Option	2700 K	3000 K	3500 K	4000 K
CCT Multiplier	0.970	1.000	1.103	1.136

Table based upon testing with 3000°K color temperature, 80CRI.

Multipliers may be used to determine relative lumen values with other color temperatures.

Photometric tests are per IES measurement standards. Tests represent typical fixture performance. Field results may vary.

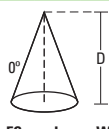
5" Trims • 600 Series • 90 CRI

ML5606930-592SC

Test Number	P130232
Light Module	600 Series, 90CRI
Trim	5" Aperture, Specular Clear Trim
Lumens	640
Efficacy	62.7 Lm/W
SC	1.06

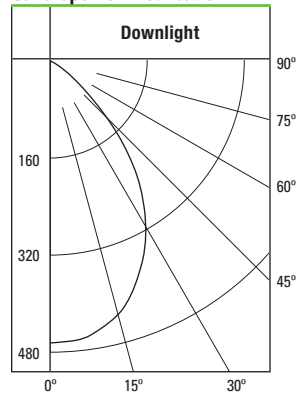


Cone of Light



D	FC	L	W
5.5	15.4	5.8	5.8
7	9.5	7.2	7.2
8	7.3	8.4	8.4
9	5.7	9.4	9.4
10	4.6	10.4	10.4
12	3.2	12.6	12.6

Candlepower Distribution

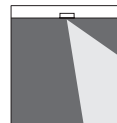


Zonal Lumen Summary

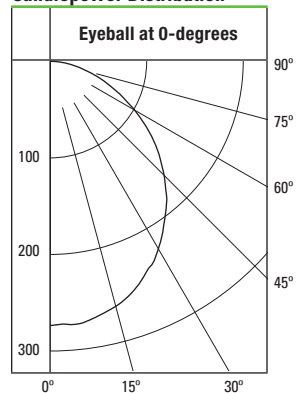
Zone	Lumens	%Fixture
0-30	331	51.7
0-40	493	77
0-60	631	98.7
0-90	640	100
90-180	0	0
0-180	640	100

ML5606930-594WB

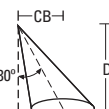
Test Number	P130280
Light Module	600 Series, 90CRI
Trim	5" Aperture, Directional Eyeball
Lumens	714
Efficacy	70 Lm/W
SC	1.22



Candlepower Distribution

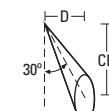


30° Horizontal Plane



D	FC	L	W	CB
5.5	8	6.6	6.6	3.2
7	4.9	8.3	8.4	4
8	3.8	9.6	9.8	4.6
9	3	10.7	11	5.2
10	2.4	12	12.2	5.8
12	1.7	14.3	14.6	6.9

30° Vertical Plane



Zonal Lumen Summary

Zone	Lumens	%Fixture
0-30	210	29.4
0-40	339	47.5
0-60	579	81
0-90	714	100
90-180	0	0
0-180	714	100

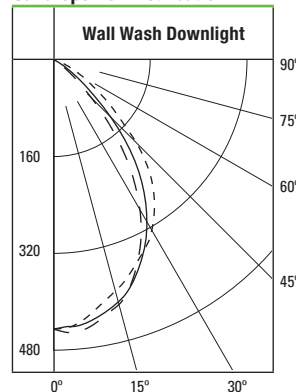
5" Trims • 600 Series • 90 CRI

ML5606930-595WW

Test Number	P130304
Light Module	600 Series, 90CRI
Trim	5" Aperture, Wall Wash with Specular Clear Trim and Specular Clear Kick Reflector
Lumens	644
Efficacy	63.1 Lm/W
SC	1.06



Candlepower Distribution



Zonal Lumen Summary

Zone	Lumens	%Fixture
0-30	316	49
0-40	475	73.8
0-60	627	97.3
0-90	644	100
90-180	0	0
0-180	644	100

Legend

0-deg:	---	Wall
90-deg:	---	Side
180-deg:	---	Room

Single Unit Footcandles

2.5' From Wall (Distance From Fixture Along Wall)

DD	●	1'	2'	3'	4'	5'	6'
1'	2.7	1.7	0.7	0.2	0.1	0	0
2'	9.2	6.6	2.9	0.9	0.3	0.1	0
3'	10.5	8.7	4.7	1.9	0.7	0.2	0.1
4'	7.4	6.6	4.8	2.6	1.1	0.5	0.2
5'	4.9	4.6	3.7	2.5	1.4	0.7	0.3
6'	3.3	3.1	2.7	2	1.4	0.8	0.4
7'	2.3	2.2	2	1.6	1.2	0.8	0.5
8'	1.6	1.6	1.5	1.2	1	0.7	0.5
9'	1.2	1.2	1.1	1	0.8	0.6	0.5
10'	0.9	0.9	0.8	0.7	0.6	0.5	0.4

Multiple Unit Footcandles

2.5' From Wall (Distance From Fixture Along Wall)

DD	--3'--	--4'--
1'	2.9	2.3
2'	10.1	9.3
3'	12.5	13.7
4'	10.1	11.7
5'	7.4	8.4
6'	5.3	5.9
7'	3.9	4.2
8'	2.9	3.1
9'	2.2	2.3
10'	1.7	1.8

Multiplier Table

CCT Option	2700 K	3000 K	3500 K	4000 K
CCT Multiplier	0.91	1.00	1.03	1.08

Table based upon testing with 3000°K color temperature, 90CRI.

Multipliers may be used to determine relative lumen values with other color temperatures.

Photometric tests are per IES measurement standards. Tests represent typical fixture performance. Field results may vary.

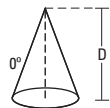
6" Trims • 600 Series • 80 CRI

ML5606830-692SC

Test Number	P130316
Light Module	600 Series, 80CRI
Trim	6" Aperture, Specular Clear Trim
Lumens	668
Efficacy	74.2 Lm/W
SC	0.66



Cone of Light

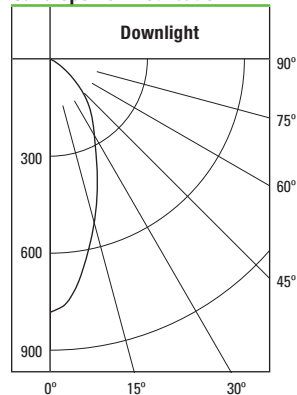


D	FC	L	W
5.5	25.9	3.6	3.6
7	16	4.6	4.6
8	12.2	5.2	5.2
9	9.7	5.8	5.8
10	7.8	6.6	6.6
12	5.4	7.8	7.8

Zonal Lumen Summary

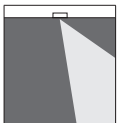
Zone	Lumens	%Fixture
0-30	368	55.1
0-40	509	76.3
0-60	659	98.7
0-90	668	100
90-180	0	0
0-180	668	100

Candlepower Distribution

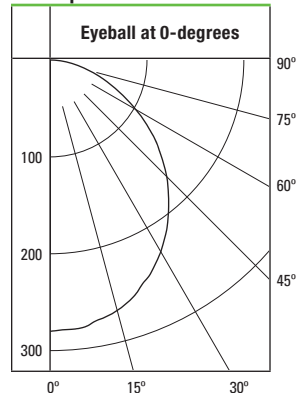


ML5606830-694WB

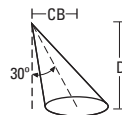
Test Number	P130372
Light Module	600 Series, 80CRI
Trim	6" Aperture, Directional Eyeball
Lumens	726
Efficacy	80.7 Lm/W
SC	1.21



Candlepower Distribution

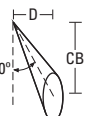


30° Horizontal Plane



D	FC	L	W	CB
5.5	8.1	6.5	6.6	3.2
7	5	8.3	8.6	4
8	3.8	9.6	9.8	4.6
9	3	10.7	11	5.2
10	2.5	11.9	12.2	5.8
12	1.7	14.3	14.6	6.9

30° Vertical Plane



D	FC	L	W	CB
1'	158.1	1.1	1.2	1.7
2'	39.5	2.2	2.6	3.5
3'	17.6	3.3	3.8	5.2
4'	9.9	4.5	5.2	6.9
5'	6.3	5.6	6.6	8.7
6'	4.4	6.7	7.8	10.4

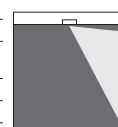
Zonal Lumen Summary

Zone	Lumens	%Fixture
0-30	214	29.5
0-40	346	47.6
0-60	589	81.1
0-90	726	100
90-180	0	0
0-180	726	100

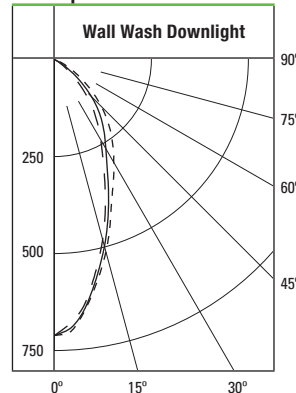
6" Trims • 600 Series • 80 CRI

ML5606830-695WW

Test Number	P130396
Light Module	600 Series, 80CRI
Trim	6" Aperture, Wall Wash with Specular Clear Trim and Specular Clear Kick Reflector
Lumens	658
Efficacy	73.1 Lm/W
SC	0.69



Candlepower Distribution



Zonal Lumen Summary

Zone	Lumens	%Fixture
0-30	352	53.5
0-40	492	74.8
0-60	643	97.7
0-90	658	100
90-180	0	0
0-180	658	100

Legend

0-deg: - - - - -	Wall
90-deg: —————	Side
180-deg: ————	Room

Single Unit Footcandles

2.5' From Wall (Distance From Fixture Along Wall)

DD	●	1'	2'	3'	4'	5'	6'
1'	1.9	1.2	0.4	0.1	0	0	0
2'	8.6	6.2	2.7	0.8	0.2	0.1	0
3'	9.2	7.5	4.4	1.9	0.7	0.2	0.1
4'	6.9	5.9	4.1	2.4	1.2	0.5	0.2
5'	4.9	4.4	3.3	2.2	1.3	0.7	0.4
6'	3.5	3.2	2.5	1.8	1.2	0.8	0.5
7'	2.6	2.4	1.9	1.5	1	0.7	0.5
8'	2	1.8	1.5	1.2	0.9	0.6	0.5
9'	1.5	1.4	1.2	1	0.7	0.6	0.4
10'	1.2	1.1	1	0.8	0.6	0.5	0.4

Multiple Unit Footcandles

2.5' From Wall (Distance From Fixture Along Wall)

DD	--3'--		--4'--			
1'	2	1.5	2	1.9	0.9	1.9
2'	9.5	8.5	9.5	8.9	5.3	8.9
3'	11.1	11.9	11.1	9.9	8.8	9.9
4'	9.3	10.1	9.3	8	8.2	8
5'	7.1	7.7	7.1	6.2	6.5	6.2
6'	5.3	5.8	5.3	4.7	5	4.7
7'	4.1	4.4	4.1	3.7	3.9	3.7
8'	3.2	3.4	3.2	2.9	3.1	2.9
9'	2.5	2.7	2.5	2.3	2.4	2.3
10'	2	2.1	2	1.8	2	1.8

Multiplier Table

CCT Option	2700 K	3000 K	3500 K	4000 K
CCT Multiplier	0.97	1.00	1.10	1.14

Table based upon testing with 3000°K color temperature, 80CRI.

Multipliers may be used to determine relative lumen values with other color temperatures.

Photometric tests are per IES measurement standards. Tests represent typical fixture performance. Field results may vary.

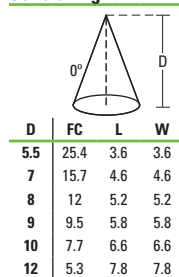
6" Trims • 600 Series • 90 CRI

ML5606930-692SC

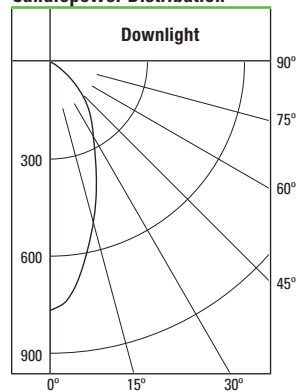
Test Number	P130320
Light Module	600 Series, 90CRI
Trim	6" Aperture, Specular Clear Trim
Lumens	655
Efficacy	64.2 Lm/W
SC	0.66



Cone of Light



Candlepower Distribution

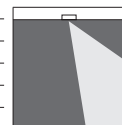


Zonal Lumen Summary

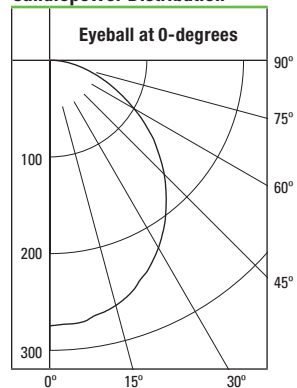
Zone	Lumens	%Fixture
0-30	361	55.1
0-40	499	76.3
0-60	647	98.7
0-90	655	100
90-180	0	0
0-180	655	100

ML5606930-694WB

Test Number	P130376
Light Module	600 Series, 90CRI
Trim	6" Aperture, Directional Eyeball
Lumens	712
Efficacy	69.8 Lm/W
SC	1.21



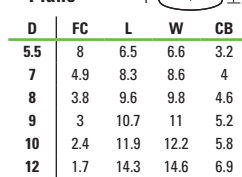
Candlepower Distribution



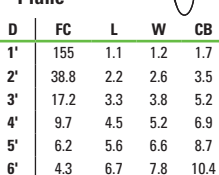
Zonal Lumen Summary

Zone	Lumens	%Fixture
0-30	210	29.5
0-40	339	47.6
0-60	577	81.1
0-90	712	100
90-180	0	0
0-180	712	100

30° Horizontal Plane



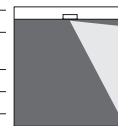
30° Vertical Plane



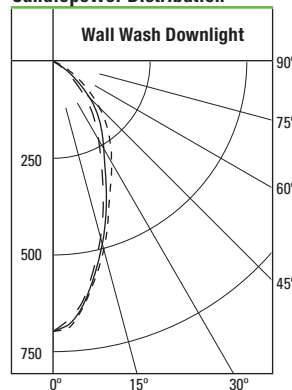
6" Trims • 600 Series • 90 CRI

ML5606930-695WW

Test Number	P130400
Light Module	600 Series, 90CRI
Trim	6" Aperture, Wall Wash with Specular Clear Trim and Specular Clear Kick Reflector
Lumens	645
Efficacy	63.2 Lm/W
SC	0.69



Candlepower Distribution



Zonal Lumen Summary

Zone	Lumens	%Fixture
0-30	345	53.5
0-40	482	74.7
0-60	630	97.7
0-90	645	100
90-180	0	0
0-180	645	100

Legend

0-deg:	---	Wall
90-deg:	---	Side
180-deg:	---	Room

Single Unit Footcandles

2.5' From Wall (Distance From Fixture Along Wall)

DD	●	1'	2'	3'	4'	5'	6'
1'	1.9	1.1	0.4	0.1	0	0	0
2'	8.5	6.1	2.6	0.8	0.2	0.1	0
3'	9	7.4	4.3	1.9	0.7	0.2	0.1
4'	6.7	5.8	4	2.3	1.1	0.5	0.2
5'	4.8	4.3	3.2	2.1	1.3	0.7	0.3
6'	3.4	3.1	2.5	1.8	1.2	0.8	0.4
7'	2.6	2.3	1.9	1.4	1	0.7	0.5
8'	2	1.8	1.5	1.2	0.9	0.6	0.5
9'	1.5	1.4	1.2	1	0.7	0.5	0.4
10'	1.2	1.1	1	0.8	0.6	0.5	0.4

Multiple Unit Footcandles

2.5' From Wall (Distance From Fixture Along Wall)

DD	--3'--	--4'--
1'	2	1.4
2'	9.3	8.4
3'	10.9	11.7
4'	9.1	9.9
5'	6.9	7.5
6'	5.2	5.6
7'	4	4.3
8'	3.1	3.3
9'	2.5	2.6
10'	2	2.1

Multiplier Table

CCT Option	2700 K	3000 K	3500 K	4000 K
CCT Multiplier	0.91	1.00	1.03	1.08

Table based upon testing with 3000°K color temperature, 90CRI.

Multipliers may be used to determine relative lumen values with other color temperatures.

Photometric tests are per IES measurement standards. Tests represent typical fixture performance. Field results may vary.

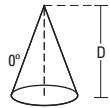
5" Trims • 900 Series • 80 CRI

ML5609830-592SC

Test Number	P130004
Light Module	900 Series, 80CRI
Trim	5" Aperture, Specular Clear Trim
Lumens	991
Efficacy	74 Lm/W
SC	1.06

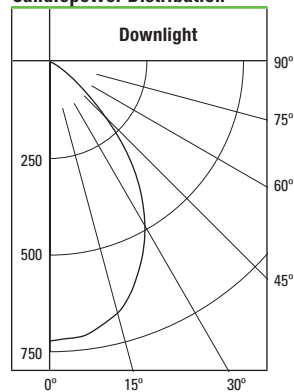


Cone of Light



D	FC	L	W
5.5	23.9	5.8	5.8
7	14.7	7.2	7.2
8	11.3	8.4	8.4
9	8.9	9.4	9.4
10	7.2	10.4	10.4
12	5	12.6	12.6

Candlepower Distribution

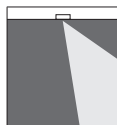


Zonal Lumen Summary

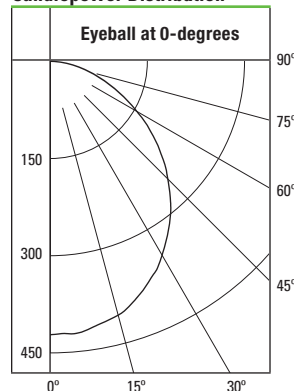
Zone	Lumens	%Fixture
0-30	513	51.8
0-40	765	77.2
0-60	979	98.8
0-90	991	100
90-180	0	0
0-180	991	100

ML5609830-594WB

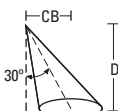
Test Number	P130060
Light Module	900 Series, 80CRI
Trim	5" Aperture, Directional Eyeball
Lumens	1100
Efficacy	82.1 Lm/W
SC	1.22



Candlepower Distribution

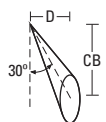


30° Horizontal Plane



D	FC	L	W	CB
5.5	12.3	6.6	6.6	3.2
7	7.6	8.3	8.6	4
8	5.8	9.6	9.8	4.6
9	4.6	10.7	11	5.2
10	3.7	11.9	12.2	5.8
12	2.6	14.3	14.6	6.9

30° Vertical Plane



Zonal Lumen Summary

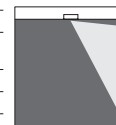
Zone	Lumens	%Fixture
0-30	324	29.5
0-40	523	47.6
0-60	892	81
0-90	1100	100
90-180	0	0
0-180	1100	100

D	FC	L	W	CB
1'	240.2	1.1	1.2	1.7
2'	60.1	2.2	2.6	3.5
3'	26.7	3.3	3.8	5.2
4'	15	4.5	5.2	6.9
5'	9.6	5.6	6.6	8.7
6'	6.7	6.7	7.8	10.4

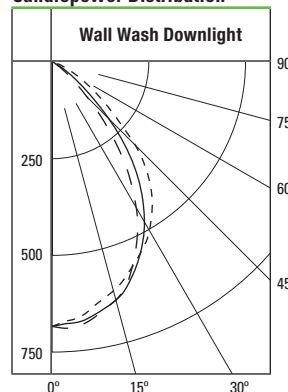
5" Trims • 900 Series • 80 CRI

ML5609830-595WW

Test Number	P130084
Light Module	900 Series, 80CRI
Trim	5" Aperture, Wall Wash with Specular Clear Trim and Specular Clear Kick Reflector
Lumens	990
Efficacy	73.9 Lm/W
SC	1.06



Candlepower Distribution



Zonal Lumen Summary

Zone	Lumens	%Fixture
0-30	486	49.1
0-40	732	73.9
0-60	964	97.4
0-90	990	100
90-180	0	0
0-180	990	100

Legend

0-deg:	---	Wall
90-deg:	---	Side
180-deg:	---	Room

Single Unit Footcandles

2.5' From Wall (Distance From Fixture Along Wall)

DD	●	1'	2'	3'	4'	5'	6'
1'	4	2.7	1	0.3	0.1	0	0
2'	14.1	10.3	4.4	1.3	0.4	0.1	0
3'	16.4	13.6	7.4	2.9	1.1	0.4	0.1
4'	11.5	10.4	7.4	4	1.8	0.8	0.3
5'	7.6	7.1	5.7	3.8	2.2	1.1	0.5
6'	5.1	4.9	4.2	3.1	2.2	1.3	0.7
7'	3.5	3.4	3	2.4	1.8	1.3	0.8
8'	2.5	2.5	2.3	1.9	1.5	1.1	0.8
9'	1.9	1.8	1.7	1.5	1.2	1	0.7
10'	1.4	1.4	1.3	1.2	1	0.8	0.7

Multiple Unit Footcandles

2.5' From Wall (Distance From Fixture Along Wall)

DD	--3'--			--4'--		
1'	4.3	3.3	4.3	4.1	1.9	4.1
2'	15.4	14	15.4	14.5	8.8	14.5
3'	19.3	20.9	19.3	17.5	14.7	17.5
4'	15.5	17.7	15.5	13.3	14.8	13.3
5'	11.4	12.7	11.4	9.9	11.4	9.9
6'	8.2	9	8.2	7.3	8.3	7.3
7'	6	6.4	6	5.4	6.1	5.4
8'	4.4	4.7	4.4	4.1	4.5	4.1
9'	3.3	3.5	3.3	3.1	3.4	3.1
10'	2.6	2.7	2.6	2.4	2.6	2.4

Multiplier Table

CCT Option	2700 K	3000 K	3500 K	4000 K
CCT Multiplier	0.93	1.00	1.02	1.04

Table based upon testing with 3000°K color temperature, 80CRI.

Multipliers may be used to determine relative lumen values with other color temperatures.

Photometric tests are per IES measurement standards. Tests represent typical fixture performance. Field results may vary.

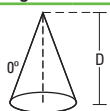
5" Trims • 900 Series • 90 CRI

ML5609930-592SC

Test Number	P130008
Light Module	900 Series, 90CRI
Trim	5" Aperture, Specular Clear Trim
Lumens	827
Efficacy	61.7 Lm/W
SC	1.06

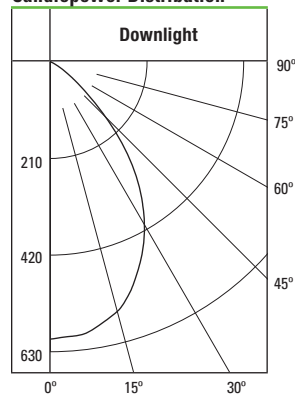


Cone of Light



D	FC	L	W
5.5	19.9	5.8	5.8
7	12.3	7.2	7.2
8	9.4	8.4	8.4
9	7.4	9.4	9.4
10	6	10.4	10.4
12	4.2	12.6	12.6

Candlepower Distribution

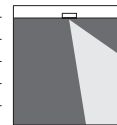


Zonal Lumen Summary

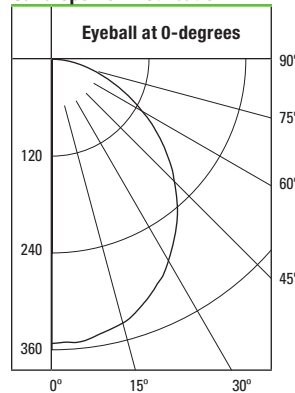
Zone	Lumens	%Fixture
0-30	428	51.8
0-40	639	77.2
0-60	817	98.8
0-90	827	100
90-180	0	0
0-180	827	100

ML5609930-594WB

Test Number	P130064
Light Module	900 Series, 90CRI
Trim	5" Aperture, Directional Eyeball
Lumens	918
Efficacy	68.5 Lm/W
SC	1.22



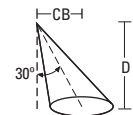
Candlepower Distribution



Zonal Lumen Summary

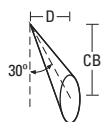
Zone	Lumens	%Fixture
0-30	271	29.5
0-40	437	47.6
0-60	744	81
0-90	918	100
90-180	0	0
0-180	918	100

30° Horizontal Plane



D	FC	L	W	CB
5.5	10.3	6.6	6.6	3.2
7	6.3	8.3	8.6	4
8	4.8	9.6	9.8	4.6
9	3.8	10.7	11	5.2
10	3.1	11.9	12.2	5.8
12	2.2	14.3	14.6	6.9

30° Vertical Plane



D	FC	L	W	CB
1'	200.5	1.1	1.2	1.7
2'	50.1	2.2	2.6	3.5
3'	22.3	3.3	3.8	5.2
4'	12.5	4.5	5.2	6.9
5'	8	5.6	6.6	8.7
6'	5.6	6.7	7.8	10.4

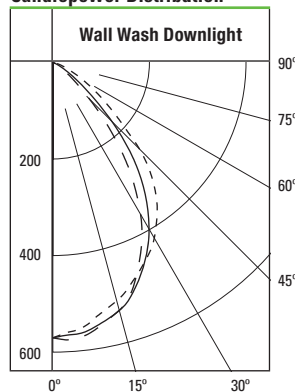
5" Trims • 900 Series • 90 CRI

ML5609930-595WW

Test Number	P130088
Light Module	900 Series, 90CRI
Trim	5" Aperture, Wall Wash with Specular Clear Trim and Specular Clear Kick Reflector
Lumens	826
Efficacy	61.6 Lm/W
SC	1.06



Candlepower Distribution



Zonal Lumen Summary

Zone	Lumens	%Fixture
0-30	406	49.1
0-40	611	73.9
0-60	804	97.4
0-90	826	100
90-180	0	0
0-180	826	100

Legend

0-deg:	---	Wall
90-deg:	---	Side
180-deg:	---	Room

Single Unit Footcandles

2.5' From Wall (Distance From Fixture Along Wall)

DD	●	1'	2'	3'	4'	5'	6'
1'	3.4	2.2	0.8	0.2	0.1	0	0
2'	11.8	8.6	3.7	1.1	0.3	0.1	0
3'	13.7	11.4	6.1	2.4	0.9	0.3	0.1
4'	9.6	8.7	6.2	3.3	1.5	0.6	0.3
5'	6.4	6	4.7	3.2	1.9	0.9	0.4
6'	4.3	4.1	3.5	2.6	1.8	1.1	0.6
7'	3	2.9	2.5	2	1.5	1.1	0.7
8'	2.1	2.1	1.9	1.6	1.3	1	0.7
9'	1.6	1.5	1.4	1.2	1	0.8	0.6
10'	1.2	1.2	1.1	1	0.8	0.7	0.6

Multiple Unit Footcandles

2.5' From Wall (Distance From Fixture Along Wall)

DD	--3'--	--4'--				
1'	3.6	2.8	3.6	3.4	1.6	3.4
2'	12.8	11.6	12.8	12.1	7.3	12.1
3'	16.1	17.5	16.1	14.6	12.3	14.6
4'	12.9	14.8	12.9	11.1	12.3	11.1
5'	9.5	10.6	9.5	8.2	9.5	8.2
6'	6.9	7.5	6.9	6.1	6.9	6.1
7'	5	5.3	5	4.5	5.1	4.5
8'	3.7	3.9	3.7	3.4	3.8	3.4
9'	2.8	2.9	2.8	2.6	2.8	2.6
10'	2.1	2.2	2.1	2	2.2	2

Multiplier Table

CCT Option	2700 K	3000 K	3500 K	4000 K
CCT Multiplier	0.88	1.00	1.04	1.10

Table based upon testing with 3000°K color temperature, 90CRI.

Multipliers may be used to determine relative lumen values with other color temperatures.

Photometric tests are per IES measurement standards. Tests represent typical fixture performance. Field results may vary.

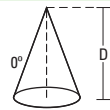
6" Trims • 900 Series • 80 CRI

ML5609830-692SC

Test Number	P130100
Light Module	900 Series, 80CRI
Trim	6" Aperture, Specular Clear Trim
Lumens	1023
Efficacy	76.3 Lm/W
SC	0.66



Cone of Light

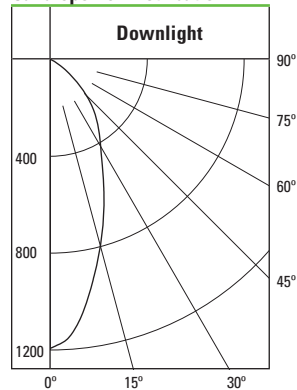


D	FC	L	W
5.5	39.4	3.6	3.6
7	24.4	4.6	4.6
8	18.6	5.2	5.2
9	14.7	5.8	5.8
10	11.9	6.6	6.6
12	8.3	7.8	7.8

Zonal Lumen Summary

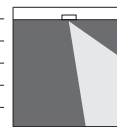
Zone	Lumens	%Fixture
0-30	562	54.9
0-40	778	76.1
0-60	1009	98.7
0-90	1023	100
90-180	0	0
0-180	1023	100

Candlepower Distribution

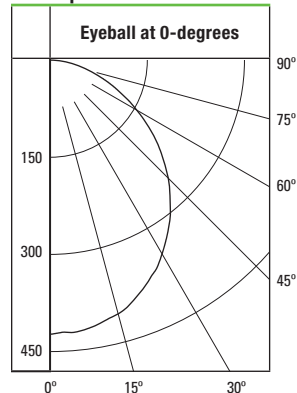


ML5609830-694WB

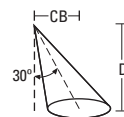
Test Number	P130156
Light Module	900 Series, 80CRI
Trim	6" Aperture, Directional Eyeball
Lumens	1099
Efficacy	82 Lm/W
SC	1.21



Candlepower Distribution

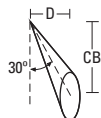


30° Horizontal Plane



D	FC	L	W	CB
5.5	12.3	6.6	6.6	3.2
7	7.6	8.3	8.6	4
8	5.8	9.6	9.8	4.6
9	4.6	10.7	11	5.2
10	3.7	12	12.2	5.8
12	2.6	14.3	14.6	6.9

30° Vertical Plane



D	FC	L	W	CB
1'	240.2	1.1	1.2	1.7
2'	60.1	2.2	2.6	3.5
3'	26.7	3.3	3.8	5.2
4'	15	4.5	5.2	6.9
5'	9.6	5.6	6.6	8.7
6'	6.7	6.7	7.8	10.4

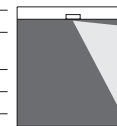
Zonal Lumen Summary

Zone	Lumens	%Fixture
0-30	324	29.5
0-40	523	47.6
0-60	891	81.1
0-90	1099	100
90-180	0	0
0-180	1099	100

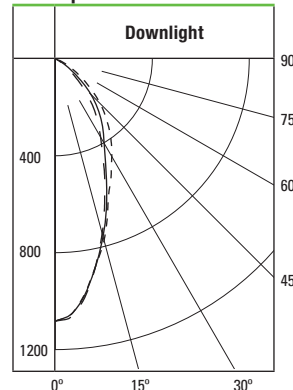
6" Trims • 900 Series • 80 CRI

ML5609830-695WW

Test Number	P130180
Light Module	900 Series, 80CRI
Trim	6" Aperture, Wall Wash with Specular Clear Trim and Specular Clear Kick Reflector
Lumens	997
Efficacy	74.4 Lm/W
SC	0.69



Candlepower Distribution



Zonal Lumen Summary

Zone	Lumens	%Fixture
0-30	533	53.5
0-40	745	74.8
0-60	974	97.7
0-90	997	100
90-180	0	0
0-180	997	100

Legend

0-deg:	---	Wall
90-deg:	---	Side
180-deg:	---	Room

Single Unit Footcandles

2.5' From Wall (Distance From Fixture Along Wall)

DD	●	1'	2'	3'	4'	5'	6'
1'	3	1.7	0.6	0.2	0.1	0	0
2'	13	9.3	4	1.3	0.3	0.1	0
3'	13.9	11.3	6.6	2.9	1.1	0.4	0.1
4'	10.5	9	6.2	3.6	1.8	0.8	0.3
5'	7.4	6.6	5	3.3	2	1.1	0.5
6'	5.3	4.8	3.8	2.7	1.8	1.2	0.7
7'	3.9	3.6	3	2.2	1.6	1.1	0.7
8'	3	2.8	2.3	1.8	1.3	1	0.7
9'	2.3	2.2	1.9	1.5	1.1	0.8	0.6
10'	1.8	1.7	1.5	1.2	1	0.7	0.6

Multiple Unit Footcandles

2.5' From Wall (Distance From Fixture Along Wall)

DD	--3'--	--4'--
1'	3.2	2.2
2'	14.3	13
3'	16.9	18.2
4'	14.1	15.5
5'	10.7	11.7
6'	8	8.8
7'	6.2	6.7
8'	4.8	5.2
9'	3.8	4.1
10'	3	3.3

Multiplier Table

CCT Option	2700 K	3000 K	3500 K	4000 K
CCT Multiplier	0.93	1.00	1.02	1.04

Table based upon testing with 3000°K color temperature, 80CRI.

Multipliers may be used to determine relative lumen values with other color temperatures.

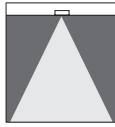
Photometric tests are per IES measurement standards. Tests represent typical fixture performance. Field results may vary.

Photometry

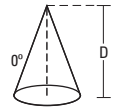
6" Trims • 900 Series • 90 CRI

ML5609930-692SC

Test Number	P130104
Light Module	900 Series, 90CRI
Trim	6" Aperture, Specular Clear Trim
Lumens	853
Efficacy	63.7 Lm/W
SC	0.66

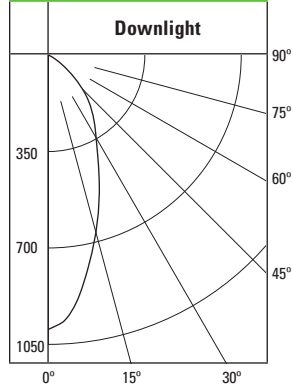


Cone of Light



D	FC	L	W
5.5	32.9	3.6	3.6
7	20.3	4.6	4.6
8	15.6	5.2	5.2
9	12.3	5.8	5.8
10	10	6.6	6.6
12	6.9	7.8	7.8

Candlepower Distribution

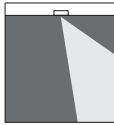


Zonal Lumen Summary

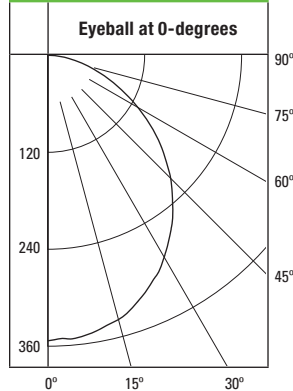
Zone	Lumens	%Fixture
0-30	469	54.9
0-40	649	76.1
0-60	842	98.7
0-90	853	100
90-180	0	0
0-180	853	100

ML5609930-694WB

Test Number	P130160
Light Module	900 Series, 90CRI
Trim	6" Aperture, Directional Eyeball
Lumens	917
Efficacy	68.4 Lm/W
SC	1.21



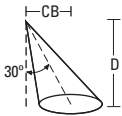
Candlepower Distribution



Zonal Lumen Summary

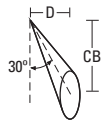
Zone	Lumens	%Fixture
0-30	271	29.5
0-40	437	47.6
0-60	744	81.1
0-90	917	100
90-180	0	0
0-180	917	100

30° Horizontal Plane



D	FC	L	W	CB
5.5	10.3	6.6	6.6	3.2
7	6.3	8.3	8.6	4
8	4.8	9.6	9.8	4.6
9	3.8	10.7	11	5.2
10	3.1	12	12.2	5.8
12	2.2	14.3	14.6	6.9

30° Vertical Plane



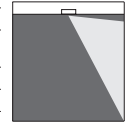
D	FC	L	W	CB
1'	200.5	1.1	1.2	1.7
2'	50.1	2.2	2.6	3.5
3'	22.3	3.3	3.8	5.2
4'	12.5	4.5	5.2	6.9
5'	8	5.6	6.6	8.7
6'	5.6	6.7	7.8	10.4

Photometry

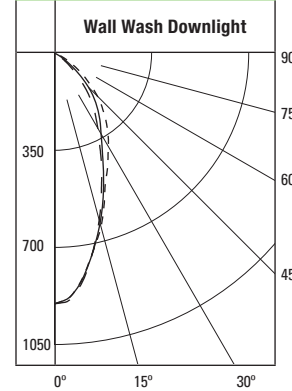
6" Trims • 900 Series • 90 CRI

ML5609930-695WW

Test Number	P130184
Light Module	900 Series, 90CRI
Trim	6" Aperture, Wall Wash with Specular Clear Trim and Specular Clear Kick Reflector
Lumens	832
Efficacy	62.1 Lm/W
SC	0.69



Candlepower Distribution



Zonal Lumen Summary

Zone	Lumens	%Fixture
0-30	445	53.5
0-40	622	74.8
0-60	813	97.7
0-90	832	100
90-180	0	0
0-180	832	100

Legend

0-deg:	---	Wall
90-deg:	---	Side
180-deg:	---	Room

Single Unit Footcandles

2.5' From Wall (Distance From Fixture Along Wall)

DD	●	1'	2'	3'	4'	5'	6'
1'	2.5	1.4	0.5	0.2	0	0	0
2'	10.9	7.7	3.4	1.1	0.3	0.1	0
3'	11.6	9.5	5.5	2.5	0.9	0.3	0.1
4'	8.7	7.5	5.2	3	1.5	0.6	0.3
5'	6.2	5.5	4.1	2.8	1.7	0.9	0.4
6'	4.4	4	3.2	2.3	1.5	1	0.6
7'	3.3	3	2.5	1.9	1.3	0.9	0.6
8'	2.5	2.3	1.9	1.5	1.1	0.8	0.6
9'	2	1.8	1.5	1.2	0.9	0.7	0.5
10'	1.5	1.4	1.3	1	0.8	0.6	0.5

Multiple Unit Footcandles

2.5' From Wall (Distance From Fixture Along Wall)

DD	--3'--		--4'--	
1'	2.6	1.9	2.6	2.5
2'	11.9	10.8	11.9	11.1
3'	14.1	15.1	14.1	12.5
4'	11.8	12.9	11.8	10.2
5'	8.9	9.8	8.9	7.8
6'	6.7	7.4	6.7	5.9
7'	5.1	5.6	5.1	4.6
8'	4	4.3	4	3.6
9'	3.2	3.4	3.2	2.9
10'	2.5	2.7	2.5	2.3

Multiplier Table

CCT Option	2700 K	3000 K	3500 K	4000 K
CCT Multiplier	0.88	1.00	1.04	1.10

Table based upon testing with 3000°K color temperature, 90CRI.

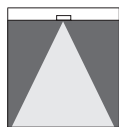
Multipliers may be used to determine relative lumen values with other color temperatures.

Photometric tests are per IES measurement standards. Tests represent typical fixture performance. Field results may vary.

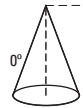
5" Trims • 1200 Series • 80 CRI

ML5612830-592SC

Test Number	P129764
Light Module	1200 Series, 80CRI
Trim	5" Aperture, Specular Clear Trim
Lumens	1495 Lm
Efficacy	86.4 Lm/W
SC	0.98

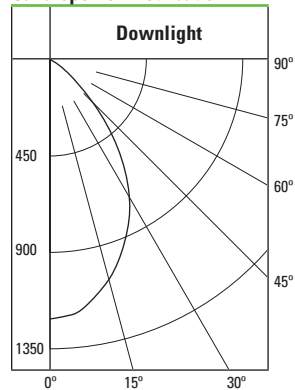


Cone of Light



D	FC	L	W
5.5'	40	5.2	5.2
7'	24.7	6.8	6.8
8'	18.9	7.8	7.8
9'	15	8.8	8.8
10'	12.1	9.8	9.8
12'	8.4	11.6	11.6

Candlepower Distribution

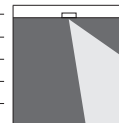


Zonal Lumen Summary

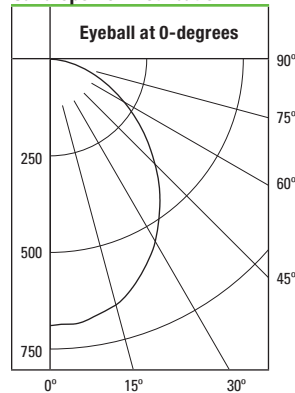
Zone	Lumens	%Fixture
0-30	805	53.9
0-40	1176	78.6
0-60	1477	98.8
0-90	1495	100
90-180	0	0
0-180	1495	100

ML5612830-594WB

Test Number	P129820
Light Module	1200 Series, 80CRI
Trim	5" Aperture, Directional Eyeball
Lumens	1663
Efficacy	96.1 Lm/W
SC	1.18



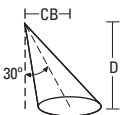
Candlepower Distribution



Zonal Lumen Summary

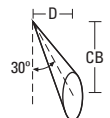
Zone	Lumens	%Fixture
0-30	521	31.3
0-40	829	49.9
0-60	1371	82.4
0-90	1663	100
90-180	0	0
0-180	1663	100

30° Horizontal Plane



D	FC	L	W	CB
5.5'	19.8	6.3	6.4	3.2
7'	12.2	8.1	8.2	4
8'	9.4	9.3	9.4	4.6
9'	7.4	10.5	10.6	5.2
10'	6	11.6	11.8	5.8
12'	4.2	14	14.2	6.9

30° Vertical Plane

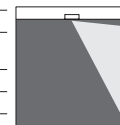


D	FC	L	W	CB
1'	368.1	1.1	1.2	1.7
2'	92	2.2	2.6	3.5
3'	40.9	3.5	3.8	5.2
4'	23	4.6	5.2	6.9
5'	14.7	5.7	6.4	8.7
6'	10.2	6.9	7.8	10.4

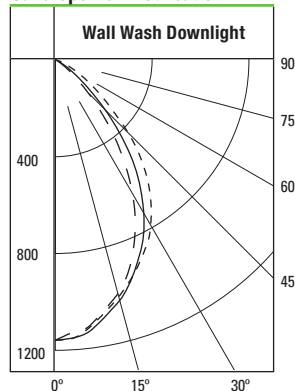
5" Trims • 1200 Series • 80 CRI

ML5612830-595WW

Test Number	P129844
Light Module	1200 Series, 80CRI
Trim	5" Aperture, Wall Wash with Specular Clear Trim and Specular Clear Kick Reflector
Lumens	1504
Efficacy	86.9 Lm/W
SC	0.98



Candlepower Distribution



Zonal Lumen Summary

Zone	Lumens	%Fixture
0-30	774	51.5
0-40	1139	75.7
0-60	1469	97.7
0-90	1504	100
90-180	0	0
0-180	1504	100

Legend

0-deg:	---	Wall
90-deg:	---	Side
180-deg:	---	Room

Single Unit Footcandles

2.5' From Wall (Distance From Fixture Along Wall)

DD	●	1'	2'	3'	4'	5'	6'
1'	5.1	3.4	1.4	0.4	0.1	0	0
2'	19.6	13.9	5.9	1.8	0.5	0.2	0.1
3'	23.9	19.2	10.2	4.1	1.5	0.5	0.2
4'	17.8	15.6	10.7	5.6	2.5	1.1	0.4
5'	12.1	11.1	8.6	5.6	3.2	1.5	0.7
6'	8.3	7.7	6.5	4.7	3.2	1.9	1
7'	5.8	5.5	4.8	3.8	2.8	1.9	1.1
8'	4.2	4	3.6	3	2.4	1.7	1.2
9'	3.1	3	2.7	2.3	2	1.5	1.1
10'	2.3	2.3	2.1	1.8	1.6	1.3	1

Multiple Unit Footcandles

2.5' From Wall (Distance From Fixture Along Wall)

DD	--3'--	--4'--
1'	5.6	4.5
2'	21.4	18.9
3'	28	29.4
4'	23.4	26.4
5'	17.7	19.8
6'	13	14.2
7'	9.5	10.2
8'	7.1	7.5
9'	5.4	5.7
10'	4.2	4.4

Multiplier Table

CCT Option	2700 K	3000 K	3500 K	4000 K
CCT Multiplier	0.888	1.000	1.014	1.094

Table based upon testing with 3000°K color temperature, 80CRI.

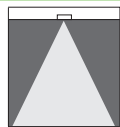
Multipliers may be used to determine relative lumen values with other color temperatures.

Photometric tests are per IES measurement standards. Tests represent typical fixture performance. Field results may vary.

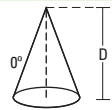
5" Trims • 1200 Series • 90 CRI

ML5612930-592SC

Test Number	P129768
Light Module	1200 Series, 90CRI
Trim	5" Aperture, Specular Clear Trim
Lumens	1139
Efficacy	65.8 Lm/W
SC	0.98

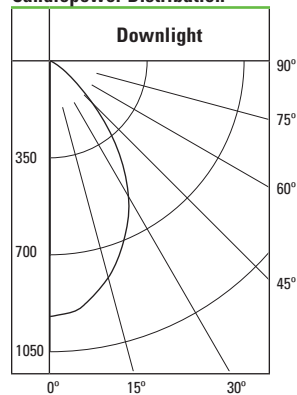


Cone of Light



D	FC	L	W
5.5'	30.5	5.2	5.2
7'	18.8	6.8	6.8
8'	14.4	7.8	7.8
9'	11.4	8.8	8.8
10'	9.2	9.8	9.8
12'	6.4	11.6	11.6

Candlepower Distribution

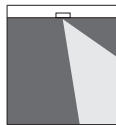


Zonal Lumen Summary

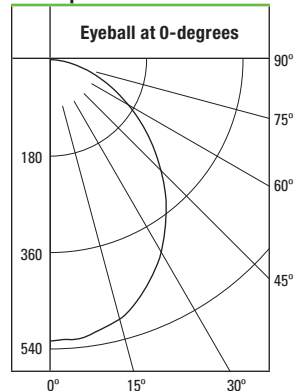
Zone	Lumens	%Fixture
0-30	613	53.9
0-40	896	78.6
0-60	1125	98.8
0-90	1139	100
90-180	0	0
0-180	1139	100

ML5612930-594WB

Test Number	P129824
Light Module	1200 Series, 90CRI
Trim	5" Aperture, Directional Eyeball
Lumens	1267
Efficacy	73.2 Lm/W
SC	1.18



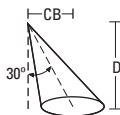
Candlepower Distribution



Zonal Lumen Summary

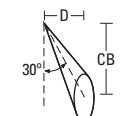
Zone	Lumens	%Fixture
0-30	397	31.3
0-40	632	49.9
0-60	1044	82.4
0-90	1267	100
90-180	0	0
0-180	1267	100

30° Horizontal Plane



D	FC	L	W	CB
5.5'	15.1	6.3	6.4	3.2
7'	9.3	8.1	8.2	4
8'	7.1	9.3	9.4	4.6
9'	5.6	10.5	10.6	5.2
10'	4.6	11.6	11.8	5.8
12'	3.2	14	14.2	6.9

30° Vertical Plane

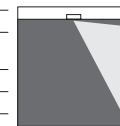


D	FC	L	W	CB
1'	280.4	1.1	1.2	1.7
2'	70.1	2.2	2.6	3.5
3'	31.2	3.5	3.8	5.2
4'	17.5	4.6	5.2	6.9
5'	11.2	5.7	6.4	8.7
6'	7.8	6.9	7.8	10.4

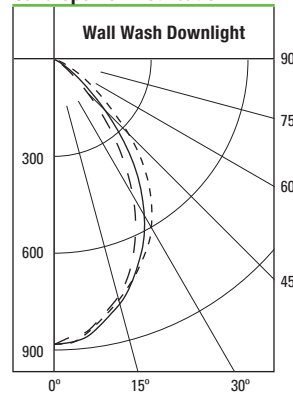
5" Trims • 1200 Series • 90 CRI

ML5612930-595WW

Test Number	P129848
Light Module	1200 Series, 90CRI
Trim	5" Aperture, Wall Wash with Specular Clear Trim and Specular Clear Kick Reflector
Lumens	1198
Efficacy	69.6 Lm/W
SC	0.83



Candlepower Distribution



Zonal Lumen Summary

Zone	Lumens	%Fixture
0-30	590	51.5
0-40	868	75.7
0-60	1119	97.7
0-90	1146	100
90-180	0	0
0-180	1146	100

Legend

0-deg: ---	Wall
90-deg: ———	Side
180-deg: ———	Room

Single Unit Footcandles

2.5' From Wall (Distance From Fixture Along Wall)

DD	●	1'	2'	3'	4'	5'	6'
1'	3.9	2.6	1	0.3	0.1	0	0
2'	14.9	10.6	4.5	1.4	0.4	0.1	0
3'	18.2	14.6	7.8	3.1	1.2	0.4	0.1
4'	13.6	11.9	8.2	4.3	1.9	0.8	0.3
5'	9.3	8.4	6.6	4.3	2.4	1.2	0.5
6'	6.3	5.9	4.9	3.6	2.4	1.4	0.7
7'	4.4	4.2	3.6	2.9	2.1	1.4	0.9
8'	3.2	3	2.7	2.3	1.8	1.3	0.9
9'	2.4	2.3	2.1	1.8	1.5	1.2	0.8
10'	1.8	1.7	1.6	1.4	1.2	1	0.8

Multiple Unit Footcandles

2.5' From Wall (Distance From Fixture Along Wall)

DD	--3'--			--4'--		
1'	4.2	3.4	4.2	4	2.1	4
2'	16.3	14.4	16.3	15.3	9	15.3
3'	21.4	22.4	21.4	19.4	15.6	19.4
4'	17.9	20.1	17.9	15.5	16.4	15.5
5'	13.5	15.1	13.5	11.7	13.1	11.7
6'	9.9	10.8	9.9	8.7	9.9	8.7
7'	7.3	7.8	7.3	6.5	7.3	6.5
8'	5.4	5.7	5.4	5	5.5	5
9'	4.1	4.3	4.1	3.8	4.2	3.8
10'	3.2	3.3	3.2	3	3.2	3

Multiplier Table

CCT Option	2700 K	3000 K	3500 K	4000 K
CCT Multiplier	0.967	1.000	1.052	1.164

Table based upon testing with 3000°K color temperature, 90CRI.

Multipliers may be used to determine relative lumen values with other color temperatures.

Photometric tests are per IES measurement standards. Tests represent typical fixture performance. Field results may vary.

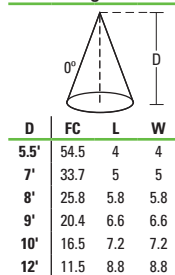
6" Trims • 1200 Series • 80 CRI

ML5612830-692SC

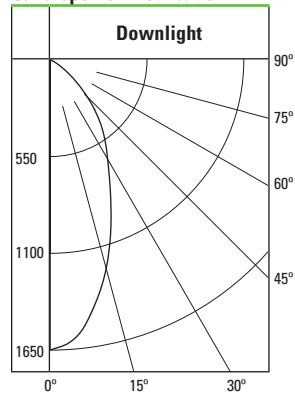
Test Number	P129860
Light Module	1200 Series, 80CRI
Trim	6" Aperture, Specular Clear Trim
Lumens	1541
Efficacy	89.1 Lm/W
SC	0.74



Cone of Light



Candlepower Distribution

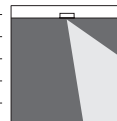


Zonal Lumen Summary

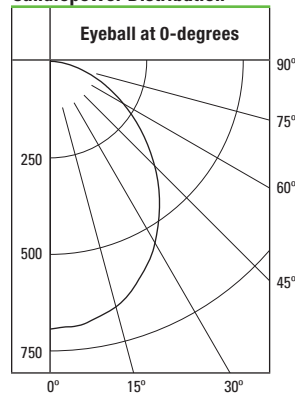
Zone	Lumens	%Fixture
0-30	860	55.8
0-40	1194	77.5
0-60	1521	98.7
0-90	1541	100
90-180	0	0
0-180	1541	100

ML5612830-694WB

Test Number	P129916
Light Module	1200 Series, 80CRI
Trim	6" Aperture, Directional Eyeball
Lumens	1654
Efficacy	95.6 Lm/W
SC	1.17



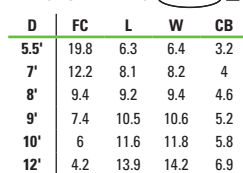
Candlepower Distribution



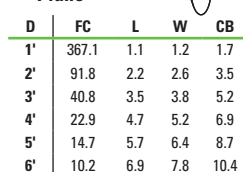
Zonal Lumen Summary

Zone	Lumens	%Fixture
0-30	521	31.5
0-40	828	50.1
0-60	1366	82.6
0-90	1654	100
90-180	0	0
0-180	1654	100

30° Horizontal Plane



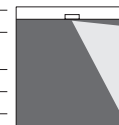
30° Vertical Plane



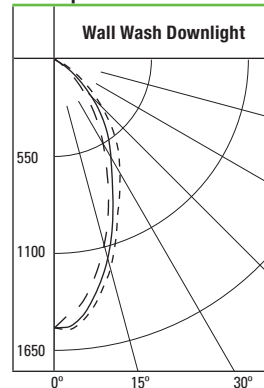
6" Trims • 1200 Series • 80 CRI

ML5612830-695WW

Test Number	P129940
Light Module	1200 Series, 80CRI
Trim	6" Aperture, Wall Wash with Specular Clear Trim and Specular Clear Kick Reflector
Lumens	1506
Efficacy	87 Lm/W
SC	0.76



Candlepower Distribution



Zonal Lumen Summary

Zone	Lumens	%Fixture
0-30	821	54.5
0-40	1147	76.2
0-60	1473	97.8
0-90	1506	100
90-180	0	0
0-180	1506	100

Legend

0-deg	---	Wall
90-deg	---	Side
180-deg	---	Room

Single Unit Footcandles

2.5' From Wall (Distance From Fixture Along Wall)

DD	●	1'	2'	3'	4'	5'	6'
1'	4.2	2.5	0.9	0.3	0.1	0	0
2'	18.3	13.1	5.6	1.7	0.5	0.1	0
3'	21.6	17	9.5	4.1	1.5	0.5	0.2
4'	16.6	14.2	9.6	5.3	2.5	1.1	0.5
5'	11.9	10.6	7.8	5.1	3	1.5	0.8
6'	8.5	7.7	6	4.3	2.9	1.7	1
7'	6.4	5.8	4.7	3.5	2.5	1.7	1.1
8'	4.8	4.4	3.7	2.9	2.1	1.5	1.1
9'	3.7	3.5	2.9	2.3	1.8	1.3	1
10'	2.9	2.7	2.4	1.9	1.5	1.2	0.9

Multiple Unit Footcandles

2.5' From Wall (Distance From Fixture Along Wall)

DD	--3'--	4'	--4'--			
1'	4.5	3.1	4.5	4.3	1.8	4.3
2'	20	17.7	20	18.8	11.2	18.8
3'	25.7	26.2	25.7	23.2	19	23.2
4'	21.9	23.8	21.9	19.1	19.1	19.1
5'	16.9	18.3	16.9	14.8	15.6	14.8
6'	12.8	13.8	12.8	11.4	12.1	11.4
7'	9.9	10.5	9.9	8.9	9.4	8.9
8'	7.7	8.1	7.7	7	7.3	7
9'	6	6.4	6	5.5	5.8	5.5
10'	4.8	5.1	4.8	4.4	4.7	4.4

Multiplier Table

CCT Option	2700 K	3000 K	3500 K	4000 K
CCT Multiplier	0.8883	1.0000	1.0136	1.0943

Table based upon testing with 3000°K color temperature, 80CRI.

Multipliers may be used to determine relative lumen values with other color temperatures.

Photometric tests are per IES measurement standards. Tests represent typical fixture performance. Field results may vary.

Photometry

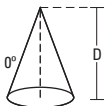
6" Trims • 1200 Series • 90 CRI

ML5612930-692SC

Test Number	P129864
Light Module	1200 Series, 90CRI
Trim	6" Aperture, Specular Clear Trim
Lumens	1174
Efficacy	67.8 Lm/W
SC	0.74

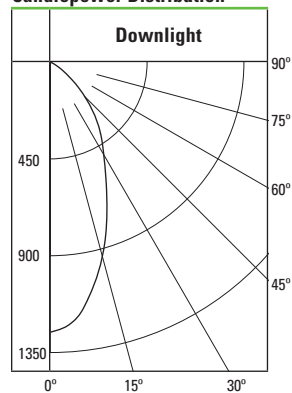


Cone of Light



D	FC	L	W
5.5'	41.5	4	4
7'	25.6	5	5
8'	19.6	5.8	5.8
9'	15.5	6.6	6.6
10'	12.6	7.2	7.2
12'	8.7	8.8	8.8

Candlepower Distribution

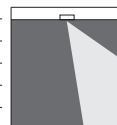


Zonal Lumen Summary

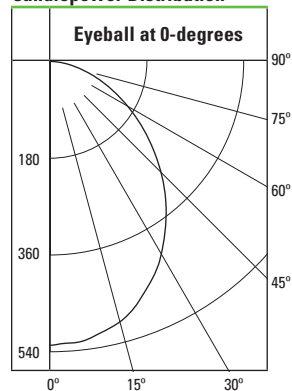
Zone	Lumens	%Fixture
0-30	655	55.8
0-40	910	77.5
0-60	1159	98.7
0-90	1174	100
90-180	0	0
0-180	1174	100

ML5612930-694WB

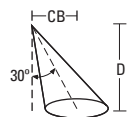
Test Number	P129920
Light Module	1200 Series, 90CRI
Trim	6" Aperture, Directional Eyeball
Lumens	1260
Efficacy	72.8 Lm/W
SC	1.17



Candlepower Distribution

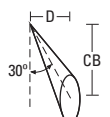


30° Horizontal Plane



D	FC	L	W	CB
5.5'	15.1	6.3	6.4	3.2
7'	9.3	8.1	8.2	4
8'	7.1	9.2	9.4	4.6
9'	5.6	10.5	10.6	5.2
10'	4.6	11.6	11.8	5.8
12'	3.2	13.9	14.2	6.9

30° Vertical Plane



D	FC	L	W	CB
1'	279.6	1.1	1.2	1.7
2'	69.9	2.2	2.6	3.5
3'	31.1	3.5	3.8	5.2
4'	17.5	4.7	5.2	6.9
5'	11.2	5.7	6.4	8.7
6'	7.8	6.9	7.8	10.4

Zonal Lumen Summary

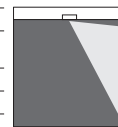
Zone	Lumens	%Fixture
0-30	397	31.5
0-40	631	50.1
0-60	1041	82.6
0-90	1260	100
90-180	0	0
0-180	1260	100

Photometry

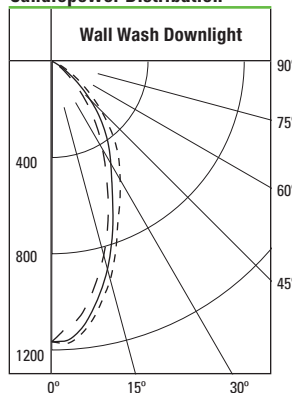
6" Trims • 1200 Series • 90 CRI

ML5612930-695WW

Test Number	P129944
Light Module	1200 Series, 90CRI
Trim	6" Aperture, Wall Wash with Specular Clear Trim and Specular Clear Kick Reflector
Lumens	1147
Efficacy	66.3 Lm/W
SC	0.76



Candlepower Distribution



Zonal Lumen Summary

Zone	Lumens	%Fixture
0-30	625	54.5
0-40	873	76.2
0-60	1122	97.9
0-90	1147	100
90-180	0	0
0-180	1147	100

Legend

0-deg:	---	Wall
90-deg:	---	Side
180-deg:	---	Room

Single Unit Footcandles

2.5' From Wall (Distance From Fixture Along Wall)

DD	●	1'	2'	3'	4'	5'	6'
1'	3.2	1.9	0.7	0.2	0.1	0	0
2'	14	9.9	4.3	1.3	0.3	0.1	0
3'	16.5	13	7.2	3.1	1.2	0.4	0.1
4'	12.6	10.8	7.3	4	1.9	0.8	0.4
5'	9	8	5.9	3.9	2.3	1.2	0.6
6'	6.5	5.9	4.6	3.3	2.2	1.3	0.8
7'	4.9	4.4	3.6	2.7	1.9	1.3	0.8
8'	3.7	3.4	2.8	2.2	1.6	1.2	0.8
9'	2.8	2.6	2.2	1.8	1.4	1	0.8
10'	2.2	2.1	1.8	1.5	1.2	0.9	0.7

Multiple Unit Footcandles

2.5' From Wall (Distance From Fixture Along Wall)

DD	--3'--	--4'--
1'	3.4	2.4
2'	15.3	13.5
3'	19.6	20
4'	16.7	18.1
5'	12.9	13.9
6'	9.8	10.5
7'	7.5	8
8'	5.8	6.2
9'	4.6	4.9
10'	3.7	3.9

Multiplier Table

CCT Option	2700 K	3000 K	3500 K	4000 K
CCT Multiplier	0.9669	1.0000	1.0517	1.1644

Table based upon testing with 3000°K color temperature, 90CRI.

Multipliers may be used to determine relative lumen values with other color temperatures.

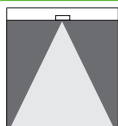
Photometric tests are per IES measurement standards. Tests represent typical fixture performance. Field results may vary.

Photometry

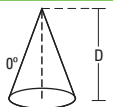
5" Trims • 1200 Series • 80 CRI • NFL Lens

ML5612830-BFR56NFL-592H

Test Number	P130378
Light Module	1200 Series, 80CRI, NFL optic
Trim	5" Aperture, Haze Trim
Lumens	1478
Efficacy	85.4 Lm/W
SC	0.41

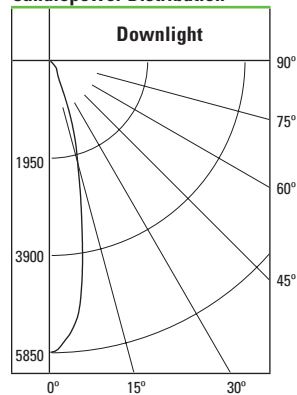


Cone of Light



D	FC	L	W
5.5'	193.1	2.2	2.2
7'	119.2	2.8	2.8
8'	91.3	3.2	3.2
9'	72.1	3.6	3.6
10'	58.4	4	4
12'	40.6	4.8	4.8

Candlepower Distribution



Zonal Lumen Summary

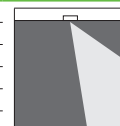
Zone	Lumens	%Fixture
0-30	1289	87.2
0-40	1428	96.6
0-60	1475	99.8
0-90	1478	100
90-180	0	0
0-180	1478	100

Photometry

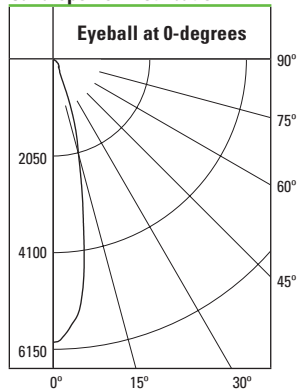
5" Trims • 1200 Series • 80 CRI • NFL Lens

ML5612830-BFR56NFL-594WB

Test Number	P130442
Light Module	1200 Series, 80CRI, NFL optic
Trim	5" Aperture, Directional Eyeball
Lumens	1698
Efficacy	98.2 Lm/W
SC	0.4

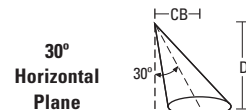


Candlepower Distribution

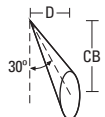


Zonal Lumen Summary

Zone	Lumens	%Fixture
0-30	1291	76.1
0-40	1428	84.1
0-60	1638	96.5
0-90	1698	100
90-180	0	0
0-180	1698	100



D	FC	L	W	CB
5.5'	135.8	2.8	2.4	3.2
7'	83.8	3.6	3	4
8'	64.2	4.1	3.6	4.6
9'	50.7	4.6	4	5.2
10'	41.1	5.1	4.4	5.8
12'	28.5	6.1	5.4	6.9



30° Vertical Plane

D	FC	L	W	CB
1'	1098	1	0.6	1.7
2'	274.5	2.1	1.2	3.5
3'	122	3.2	1.8	5.2
4'	68.6	4.3	2.6	6.9
5'	43.9	5.4	3.2	8.7
6'	30.5	6.5	3.8	10.4



Multiplier Table

CCT Option	2700 K	3000 K	3500 K	4000 K
CCT Multiplier	0.888	1.000	1.014	1.094

Table based upon testing with 3000°K color temperature, 80CRI.

Multipliers may be used to determine relative lumen values with other color temperatures.

Photometric tests are per IES measurement standards. Tests represent typical fixture performance. Field results may vary.

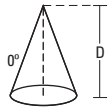
5" Trims • 1200 Series • 90 CRI • NFL Lens

ML5612930-BFR56NFL-592H

Test Number	P130382
Light Module	1200 Series, 90CRI, NFL optic
Trim	5" Aperture, Haze Trim
Lumens	1126
Efficacy	65.1 Lm/W
SC	0.41

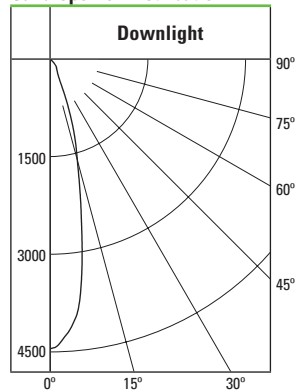


Cone of Light



D	FC	L	W
5.5'	147.1	2.2	2.2
7'	90.8	2.8	2.8
8'	69.5	3.2	3.2
9'	54.9	3.6	3.6
10'	44.5	4	4
12'	30.9	4.8	4.8

Candlepower Distribution



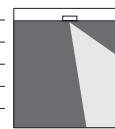
Zonal Lumen Summary

Zone	Lumens	%Fixture
0-30	982	87.2
0-40	1088	96.6
0-60	1124	99.8
0-90	1126	100
90-180	0	0
0-180	1126	100

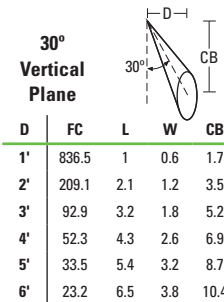
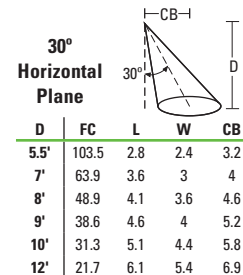
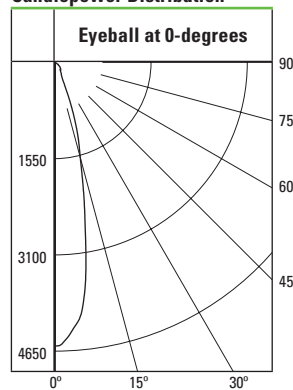
5" Trims • 1200 Series • 90 CRI • NFL Lens

ML5612930-BFR56NFL-594WB

Test Number	P130446
Light Module	1200 Series, 90CRI, NFL optic
Trim	5" Aperture, Directional Eyeball
Lumens	1294
Efficacy	74.8 Lm/W
SC	0.4



Candlepower Distribution



Zonal Lumen Summary

Zone	Lumens	%Fixture
0-30	984	76
0-40	1088	84.1
0-60	1248	96.5
0-90	1294	100
90-180	0	0
0-180	1294	100

Multiplier Table

CCT Option	2700 K	3000 K	3500 K	4000 K
CCT Multiplier	0.967	1.000	1.052	1.164

Table based upon testing with 3000°K color temperature, 90CRI.
Multipliers may be used to determine relative lumen values with other color temperatures.

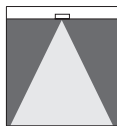
Photometric tests are per IES measurement standards. Tests represent typical fixture performance. Field results may vary.



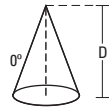
6" Trims • 1200 Series • 80 CRI • NFL Lens

ML5612830-BFR56NFL-692H

Test Number	P130474
Light Module	1200 Series, 80CRI, NFL optic
Trim	6" Aperture, Haze Trim
Lumens	1543
Efficacy	89.2 Lm/W
SC	0.41

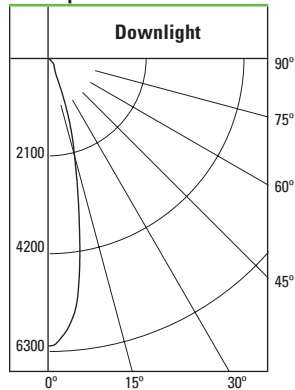


Cone of Light



D	FC	L	W
5.5'	204.4	2.2	2.2
7'	126.2	2.8	2.8
8'	96.6	3.2	3.2
9'	76.3	3.6	3.6
10'	61.8	4	4
12'	42.9	4.8	4.8

Candlepower Distribution



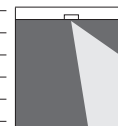
Zonal Lumen Summary

Zone	Lumens	%Fixture
0-30	1319	85.5
0-40	1457	94.4
0-60	1541	99.9
0-90	1543	100
90-180	0	0
0-180	1543	100

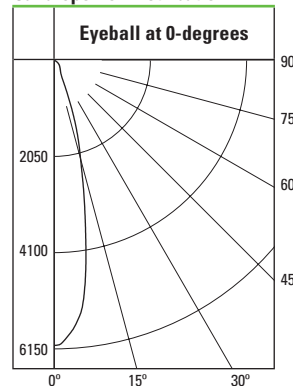
6" Trims • 1200 Series • 80 CRI • NFL Lens

ML5612830-BFR56NFL-694WB

Test Number	P130538
Light Module	1200 Series, 80CRI, NFL optic
Trim	6" Aperture, Directional Eyeball
Lumens	1688
Efficacy	97.6 Lm/W
SC	0.41

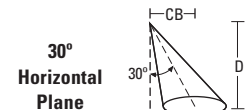


Candlepower Distribution



Zonal Lumen Summary

Zone	Lumens	%Fixture
0-30	1315	77.9
0-40	1456	86.2
0-60	1661	98.4
0-90	1688	100
90-180	0	0
0-180	1688	100



D	FC	L	W	CB
5.5'	138.1	2.8	2.4	3.2
7'	85.2	3.6	3.2	4
8'	65.3	4.1	3.6	4.6
9'	51.6	4.7	4	5.2
10'	41.8	5.2	4.6	5.8
12'	29	6.2	5.4	6.9



D	FC	L	W	CB
1'	1120.1	1	0.6	1.7
2'	280	2	1.2	3.5
3'	124.5	3.1	2	5.2
4'	70	4.2	2.6	6.9
5'	44.8	5.3	3.2	8.7
6'	31.1	6.3	4	10.4



Multiplier Table

CCT Option	2700 K	3000 K	3500 K	4000 K
CCT Multiplier	0.888	1.000	1.014	1.094

Table based upon testing with 3000°K color temperature, 80CRI. Multipliers may be used to determine relative lumen values with other color temperatures.

Photometric tests are per IES measurement standards. Tests represent typical fixture performance. Field results may vary.

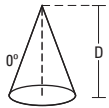
6" Trims • 1200 Series • 90 CRI • NFL Lens

ML5612930-BFR56NFL-692H

Test Number	P130478
Light Module	1200 Series, 90CRI, NFL optic
Trim	6" Aperture, Haze Trim
Lumens	1175
Efficacy	67.9 Lm/W
SC	0.41

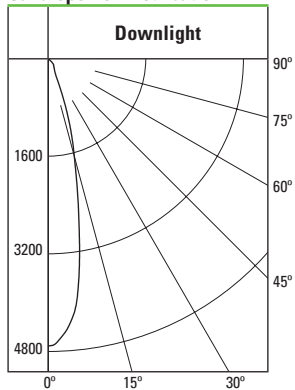


Cone of Light



D	FC	L	W
5.5'	155.7	2.2	2.2
7'	96.1	2.8	2.8
8'	73.6	3.2	3.2
9'	58.2	3.6	3.6
10'	47.1	4	4
12'	32.7	4.8	4.8

Candlepower Distribution



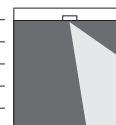
Zonal Lumen Summary

Zone	Lumens	%Fixture
0-30	1005	85.5
0-40	1110	94.4
0-60	1174	99.9
0-90	1175	100
90-180	0	0
0-180	1175	100

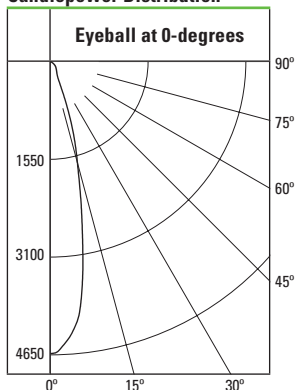
6" Trims • 1200 Series • 90 CRI • NFL Lens

ML5612930-BFR56NFL-694WB

Test Number	P130542
Light Module	1200 Series, 90CRI, NFL optic
Trim	6" Aperture, Directional Eyeball
Lumens	1286
Efficacy	74.3 Lm/W
SC	0.41



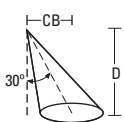
Candlepower Distribution



Zonal Lumen Summary

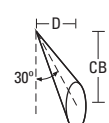
Zone	Lumens	%Fixture
0-30	1002	77.9
0-40	1109	86.2
0-60	1265	98.4
0-90	1286	100
90-180	0	0
0-180	1286	100

30° Horizontal Plane



D	FC	L	W	CB
5.5'	105.2	2.8	2.4	3.2
7'	64.9	3.6	3.2	4
8'	49.7	4.1	3.6	4.6
9'	39.3	4.7	4	5.2
10'	31.8	5.2	4.6	5.8
12'	22.1	6.2	5.4	6.9

30° Vertical Plane



D	FC	L	W	CB
1'	853.3	1	0.6	1.7
2'	213.3	2	1.2	3.5
3'	94.8	3.1	2	5.2
4'	53.3	4.2	2.6	6.9
5'	34.1	5.3	3.2	8.7
6'	23.7	6.3	4	10.4

Multiplier Table

CCT Option	2700 K	3000 K	3500 K	4000 K
CCT Multiplier	0.967	1.000	1.052	1.164

Table based upon testing with 3000°K color temperature, 90CRI.

Multipliers may be used to determine relative lumen values with other color temperatures.

Photometric tests are per IES measurement standards. Tests represent typical fixture performance. Field results may vary.



Eaton's Cooper Lighting Business

Headquarters

1121 Highway 74 South
Peachtree City, GA 30269
P: 770-486-4800
www.cooperlighting.com

Canada Sales

5925 McLaughlin Road
Mississauga, Ontario L5R 1B8
P: 905-501-3000
F: 905-501-3172

Our Lighting Product

Brands
Halo
Halo Commercial
Portfolio
IRiS
RSA
Metalux
Corelite
Neo-Ray
Fail-Safe
MWS
Ametrix
Shaper
io
Lumark
McGraw-Edison
Invue
Lumière
Streetworks
AtLite
Sure-Lites

Our Controls Product Brands

Greengate
iLumin
Zero 88
Fifth Light Technology
iLight (International Only)

Eaton

1000 Eaton Boulevard
Cleveland, OH 44122
United States
Eaton.com

Eaton's Cooper Lighting Business

1121 Highway 74 South
Peachtree City, GA 30269
P: 770-486-4800
www.cooperlighting.com

© 2015 Eaton
All Rights Reserved
Printed in USA
Publication No. ADV142886
December 2014

Eaton is a registered trademark.

All other trademarks are property
of their respective owners.



Powering Business Worldwide