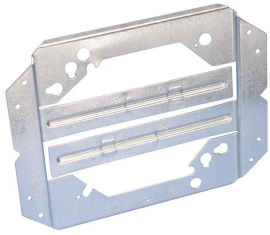




MOUNTS ELECTRICAL BOXES BRACKET, 2 1/2", 3 1/2", 4" WALL DEPTH

CATALOG NUMBER

MEB1



CERTIFICATIONS



FEATURES

Design simplifies handling, reduces inventory and saves space

Requires only a screw gun to install

V-notched on center allows for consistent positioning

Built-in support legs reduce box movement

Can be used with EMT; ideal for flexible conduit, MC/AC or non-metallic sheathed cable

Can be pre-assembled in the shop to allow for greater efficiency at the job site

Plaster rings can be mounted separately eliminating the need for an electrical box for low-voltage applications

MP Series brackets can be attached in-line to the MEB1 for low voltage applications

Mounts on either side of stud without need to reposition box

PRODUCT ATTRIBUTES

Material: Steel

Finish: Pregalvanized

Stud Wall Depth: 2 1/2" - 3 1/2"; 4" Min

WARNING

nVent products shall be installed and used only as indicated in nVent's product instruction sheets and training materials. Instruction sheets are available at www.nvent.com and from your nVent customer service representative. Improper installation, misuse, misapplication or other failure to completely follow nVent's instructions and warnings may cause product malfunction, property damage, serious bodily injury and death and/or void your warranty.

North America

+1.800.753.9221

Option 1 – Customer Care

Option 2 – Technical Support

Europe

Netherlands:

+31 800-0200135

France:

+33 800 901 793

Europe

Germany:

800 1890272

Other Countries:

+31 13 5835404

APAC

Shanghai:

+ 86 21 2412 1618/19

Sydney:

+61 2 9751 8500



Our powerful portfolio of brands:
nVent.com CADDY ERICO HOFFMAN RAYCHEM SCHROFF
TRACER

© 2025 nVent. All nVent marks and logos are owned or licensed by nVent Services GmbH or its affiliates. All other trademarks are the property of their respective owners.

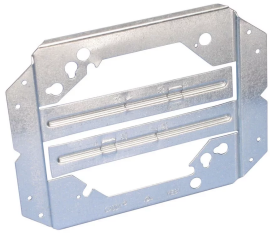
nVent reserves the right to change specifications without notice.



MOUNTS ELECTRICAL BOXES BRACKET, 2 1/2", 3 1/2", 4" WALL DEPTH

CATALOG NUMBER

MEB1



CERTIFICATIONS



FEATURES

Design simplifies handling, reduces inventory and saves space

Requires only a screw gun to install

V-notched on center allows for consistent positioning

Built-in support legs reduce box movement

Can be used with EMT; ideal for flexible conduit, MC/AC or non-metallic sheathed cable

Can be pre-assembled in the shop to allow for greater efficiency at the job site

Plaster rings can be mounted separately eliminating the need for an electrical box for low-voltage applications

MP Series brackets can be attached in-line to the MEB1 for low voltage applications

Mounts on either side of stud without need to reposition box

PRODUCT ATTRIBUTES

Material: Steel

Finish: Pregalvanized

Stud Wall Depth: 2 1/2" - 3 1/2"; 4" Min

WARNING

nVent products shall be installed and used only as indicated in nVent's product instruction sheets and training materials. Instruction sheets are available at www.nvent.com and from your nVent customer service representative. Improper installation, misuse, misapplication or other failure to completely follow nVent's instructions and warnings may cause product malfunction, property damage, serious bodily injury and death and/or void your warranty.

North America

+1.800.753.9221

Option 1 – Customer Care

Option 2 – Technical Support

Europe

Netherlands:

+31 800-0200135

France:

+33 800 901 793

Europe

Germany:

800 1890272

Other Countries:

+31 13 5835404

APAC

Shanghai:

+ 86 21 2412 1618/19

Sydney:

+61 2 9751 8500



Our powerful portfolio of brands:
nVent.com CADDY ERICO HOFFMAN RAYCHEM SCHROFF
TRACER