

New Sizes!
on
reverse

Low Voltage Mounting Brackets

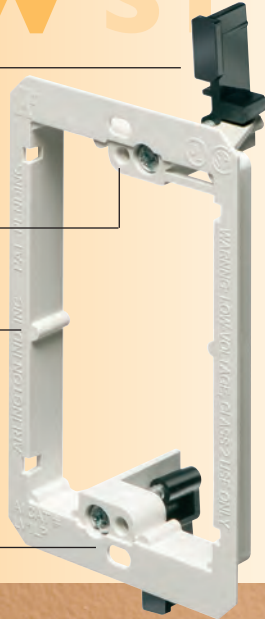
For Low Voltage Class 2 wiring in *EXISTING CONSTRUCTION*

NEW STYLES!

Wings
hold bracket secure
when mounting
screws are tightened

**Recessed
Screw Hole**
and
**Thin
Front Lip**
seat wall plate
flush with wall
surface

Oval Hole
allows final shifting,
straightening of device



LV1LP
Low profile
Low voltage
mounting
bracket

Designed for use with 1/2" or 5/8" drywall installed on furring strips attached to concrete walls.

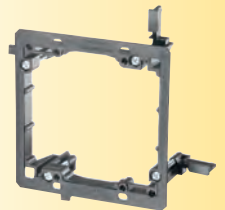
Arlington's non-metallic, Low Voltage Mounting Brackets are the time- and money-saving solution for faster and easier mounting of Class 2 communications, computer and cable TV wiring.

Designed to mount wall plates flush, our mounting brackets have features that deliver a better-looking, easy to install job; specially designed screw holes, thin front lip and more.

- Brackets adjust to fit various wall board thicknesses
- Bracket is its own template for cut out
- Horizontal or vertical mounting
- They install faster, cost less than metal brackets
- UL/CSA Listed

NEW! Low profile, single- and two-gang mounting bracket for use with drywall installed on furring strips attached to concrete walls... and a heavy-duty, two-gang mounting bracket with four mounting wings for support in each corner.

2-gang w/
four mounting
wings
LV2HD



NEW!

LV2LP
Low profile
Two-gang



Arlington

1 Stauffer Industrial Park
Scranton, PA 18517
800/233.4717
Fax 570/562.0646
www.aifittings.com

Patented

Low Voltage Mounting Brackets

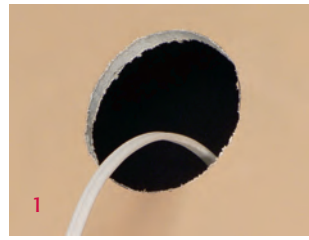
Easy Installation of Low Voltage Smoke Detectors and More!

LVR1

- Adjusts to fit 1/4" to 1-1/2" wall or ceiling thickness.
- Bracket is its own template for cut out. Trace hole along the inside diameter of the bracket. Cut along the outside of the line.
- UL/CSA Listed.

Fast and Easy Installation of a Low Voltage Smoke Detector

- 1 Trace bracket, then cut hole. Pull wires.
- 2 Insert bracket into opening.
- 3 Tighten three screws to set LVR1 wings securely against drywall.
- 4 Attach low voltage smoke detector to LVR1 through screw holes in the mounting plate.
- 5 Attach smoke detector cover.



Vertical or Horizontal Mounting

Try all of our low voltage mounting brackets...

Our Low Voltage Mounting Brackets install faster than metal – cost less too!

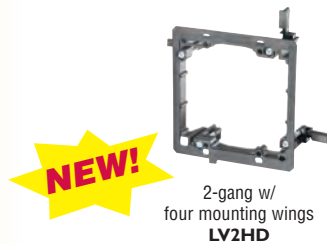
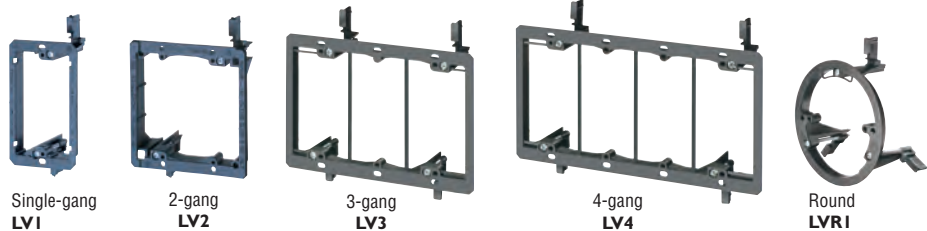
Catalog Number	UPC/DEI/NAED Mfg. #018997	Description	Adjusts to Fit Wall Thickness	Unit Pkg	Std Pkg
LV1LP	58177	Low profile, single-gang	1/2" to 5/8"	10	100
LV2LP	23102	Low profile, two-gang	1/2" to 5/8"	5	50
LV1	58175	Single-gang	1/4" to 1"	10	100
LV2	10952	Two-gang	1/4" to 1"	5	50
LV2HD	20010	Two-gang (four mounting wings)	1/4" to 1"	5	25
LV3	09600	Three-gang	1/4" to 1"	5	50
LV4	09601	Four-gang	1/4" to 1"	5	50
LVR1	58185	Round	1/4" to 1-1/2"	---	25



NEW!



Arlington
 1 Stauffer Industrial Park
 Scranton, PA 18517
800/233.4717
Fax 570/562.0646
www.aifittings.com



NEW!

Distributed by

New Sizes!
on
reverse

Low Voltage Mounting Brackets

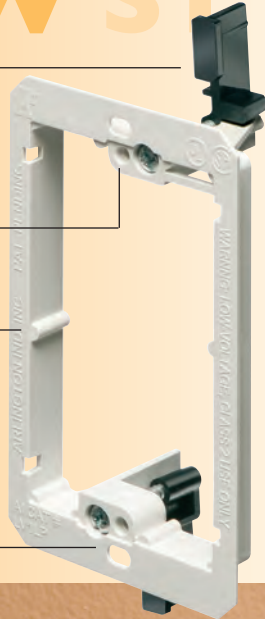
For Low Voltage Class 2 wiring in *EXISTING CONSTRUCTION*

NEW STYLES!

Wings
hold bracket secure
when mounting
screws are tightened

**Recessed
Screw Hole**
and
**Thin
Front Lip**
seat wall plate
flush with wall
surface

Oval Hole
allows final shifting,
straightening of device



LV1LP
Low profile
Low voltage
mounting
bracket

Designed for use with 1/2" or 5/8" drywall installed on furring strips attached to concrete walls.

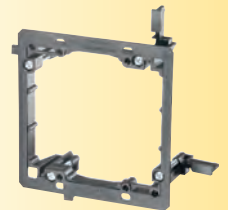
Arlington's non-metallic, Low Voltage Mounting Brackets are the time- and money-saving solution for faster and easier mounting of Class 2 communications, computer and cable TV wiring.

Designed to mount wall plates flush, our mounting brackets have features that deliver a better-looking, easy to install job; specially designed screw holes, thin front lip and more.

- Brackets adjust to fit various wall board thicknesses
- Bracket is its own template for cut out
- Horizontal or vertical mounting
- They install faster, cost less than metal brackets
- UL/CSA Listed

NEW! Low profile, single- and two-gang mounting bracket for use with drywall installed on furring strips attached to concrete walls... and a heavy-duty, two-gang mounting bracket with four mounting wings for support in each corner.

2-gang w/
four mounting
wings
LV2HD



NEW!



LV2LP
Low profile
Two-gang



Arlington

1 Stauffer Industrial Park
Scranton, PA 18517
800/233.4717
Fax 570/562.0646
www.aifittings.com

Patented

Low Voltage Mounting Brackets

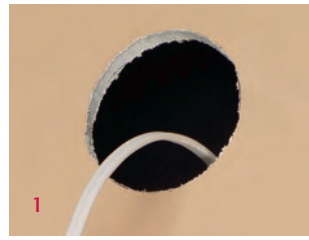
Easy Installation of Low Voltage Smoke Detectors and More!

LVR1

- Adjusts to fit 1/4" to 1-1/2" wall or ceiling thickness.
- Bracket is its own template for cut out. Trace hole along the inside diameter of the bracket. Cut along the outside of the line.
- UL/CSA Listed.

Fast and Easy Installation of a Low Voltage Smoke Detector

- 1 Trace bracket, then cut hole. Pull wires.
- 2 Insert bracket into opening.
- 3 Tighten three screws to set LVR1 wings securely against drywall.
- 4 Attach low voltage smoke detector to LVR1 through screw holes in the mounting plate.
- 5 Attach smoke detector cover.



Vertical or Horizontal Mounting

Try all of our low voltage mounting brackets...

Our Low Voltage Mounting Brackets install faster than metal – cost less too!

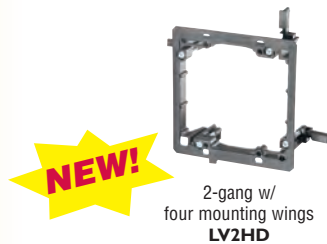
Catalog Number	UPC/DEI/NAED Mfg. #018997	Description	Adjusts to Fit Wall Thickness	Unit Pkg	Std Pkg
LV1LP	58177	Low profile, single-gang	1/2" to 5/8"	10	100
LV2LP	23102	Low profile, two-gang	1/2" to 5/8"	5	50
LV1	58175	Single-gang	1/4" to 1"	10	100
LV2	10952	Two-gang	1/4" to 1"	5	50
LV2HD	20010	Two-gang (four mounting wings)	1/4" to 1"	5	25
LV3	09600	Three-gang	1/4" to 1"	5	50
LV4	09601	Four-gang	1/4" to 1"	5	50
LVR1	58185	Round	1/4" to 1-1/2"	---	25



NEW!



Arlington
 1 Stauffer Industrial Park
 Scranton, PA 18517
800/233.4717
Fax 570/562.0646
www.aifittings.com



NEW!

Distributed by