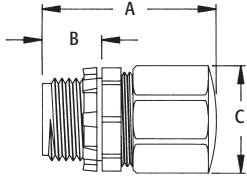
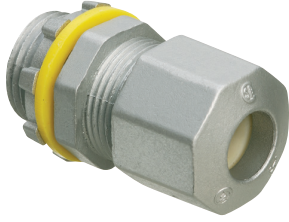


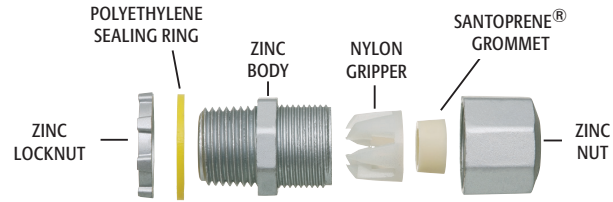
## Low-Profile Strain Relief Cord Connectors



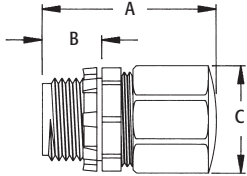
Zinc die-cast. Liquid-tight. Oil-tight. Furnished with sealing ring and locknut.

| CATALOG NUMBER | UPC/DCI/NAED MFG #018997 | TRADE SIZE | CORD RANGE | UNIT PKG | STD PKG | DIM A | DIM B | DIM C |
|----------------|--------------------------|------------|------------|----------|---------|-------|-------|-------|
| LPCG503Z*      | 50352                    | 1/2        | .100-.300  | 25       | 100     | 1.792 | .630  | 1.042 |
| LPCG50Z*       | 36110                    | 1/2        | .200-.472  | 25       | 100     | 1.792 | .630  | 1.042 |
| LPCG507Z       | 50356                    | 1/2        | .385-.600  | 25       | 100     | 2.178 | .517  | 1.305 |
| LPCG753Z*      | 36105                    | 3/4        | .100-.300  | 10       | 50      | 1.963 | .570  | 1.042 |
| LPCG754Z       | 50764                    | 3/4        | .240-.472  | 10       | 50      | 1.963 | .570  | 1.305 |
| LPCG757Z       | 50766                    | 3/4        | .385-.750  | 10       | 50      | 2.250 | .600  | 1.305 |

\*UL not applicable for under .240 wire diameter—wire strength will not meet UL's 35 lb test requirements for the fitting.  
**PATENTED.**



## Low-Profile Strain Relief Cord Connectors



Zinc die-cast. Liquid-tight. Oil-tight. Furnished with sealing ring and locknut.

| CATALOG NUMBER | UPC/DCI/NAED MFG #018997 | TRADE SIZE | CORD RANGE | UNIT PKG | STD PKG | DIM A | DIM B | DIM C |
|----------------|--------------------------|------------|------------|----------|---------|-------|-------|-------|
| LPCG503Z*      | 50352                    | 1/2        | .100-.300  | 25       | 100     | 1.792 | .630  | 1.042 |
| LPCG50Z*       | 36110                    | 1/2        | .200-.472  | 25       | 100     | 1.792 | .630  | 1.042 |
| LPCG507Z       | 50356                    | 1/2        | .385-.600  | 25       | 100     | 2.178 | .517  | 1.305 |
| LPCG753Z*      | 36105                    | 3/4        | .100-.300  | 10       | 50      | 1.963 | .570  | 1.042 |
| LPCG754Z       | 50764                    | 3/4        | .240-.472  | 10       | 50      | 1.963 | .570  | 1.305 |
| LPCG757Z       | 50766                    | 3/4        | .385-.750  | 10       | 50      | 2.250 | .600  | 1.305 |

\*UL not applicable for under .240 wire diameter—wire strength will not meet UL's 35 lb test requirements for the fitting.  
**PATENTED.**

