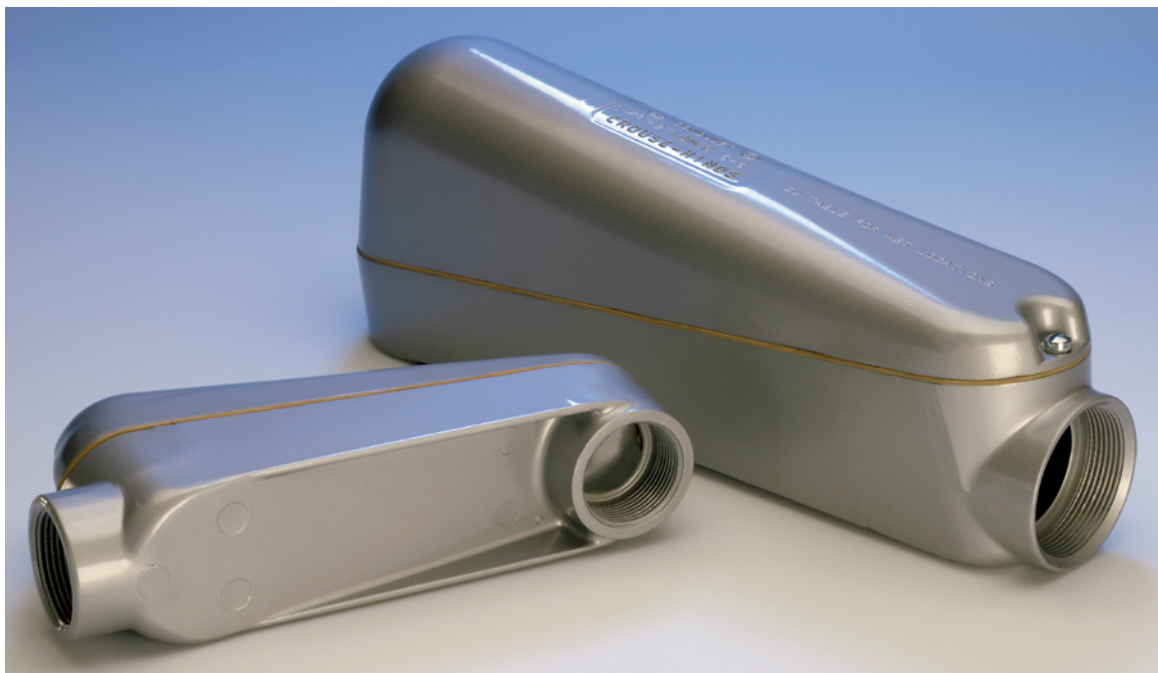


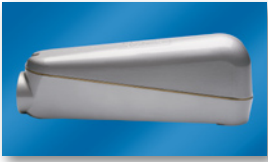


# Mogul Pulling Elbows

 **COOPER** Crouse-Hinds



# Mogul Pulling Elbows



Cooper Crouse-Hinds mogul pulling elbows facilitate wire pulling in 90° bends to allow changes in conductor direction. The pulling elbows can also be used to allow conductor entrance into buildings. With the smooth finish and large dome cover, wires can be easily pulled through without compromising the wire insulation. The gasketed cover creates a raintight chamber and the copper-free aluminum construction provides increased corrosion resistance, making the mogul pulling elbow ideal for any outdoor application.

## APPLICATIONS

- Used as a chamber for containing heavy-duty conductors
- For use as a chamber for containing a 90° turn in large stiff conductors to change conductor direction or to enter buildings
- For use as a pull box for pulling large conductors
- For use as a chamber for making splices and taps
- Can be used as an accessible opening to accommodate future changes of the system

## FEATURES & BENEFITS

- Large dome cover permits easy, straight through pull
- Dimension from center-line of back hub to bushing of end hub exceeds six times the trade diameter of the conduit
- Tapered threads provide easy assembly, tight construction
- Heavy-duty machine screws for cover
- Cover gasket provides long dependable service and protection against the elements; such as fuel, oil and water
- Smooth design and finish make handling easy and complement any construction job

## FEATURES & BENEFITS

- Body and Cover: Die-cast copper-free aluminum
- Gasket—Fuel, oil, and water resistant flex seal

## STANDARD FINISHES

- Corrosion-resistant metallic paint

## CERTIFICATIONS & COMPLIANCES

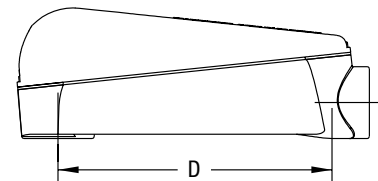
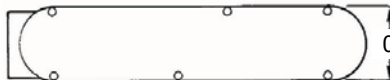
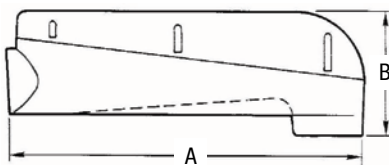
- UL Standard: 514B
- NEC: Article 370
- CSA C22.2 No. 18
- CEC: 22.1

## ORDERING INFORMATION

## DIMENSIONS

Catalog No.	Size	A	B	C	D	Std. Unit Pkg.	Wt. Lbs Per 100
LBNEC3	1"	9-21/32"	3-17/32"	2-1/2"	7-1/2"	2	146
LBNEC4	1-1/4"	9-21/32"	3-17/32"	2-1/2"	7-1/2"	2	132
LBNEC5	1-1/2"	14-17/32"	5-13/32"	3-1/8"	12-1/20"	1	258
LBNEC6	2"	14-17/32"	5-13/32"	3-1/8"	12-1/20"	1	230
LBNEC7	2-1/2"	22"	7-17/32"	4-1/2"	18-5/32"	1	1003
LBNEC8	3"	22"	7-17/32"	4-1/2"	18-5/32"	1	938
LBNEC9	3-1/2"	28-27/32"	8-15/16"	5-1/2"	24-1/8"	1	2158
LBNEC10	4"	28-27/32"	8-15/16"	5-1/2"	24-1/8"	1	2060

## DIMENSIONS



### Cooper Crouse-Hinds — US

PO Box 4999  
Syracuse, NY 13221  
Toll Free: (866) 764-5454  
FAX: (315) 477-5179 FAX Orders Only: (866) 653-0640  
crouse.customerctr@cooperindustries.com

### Canada:

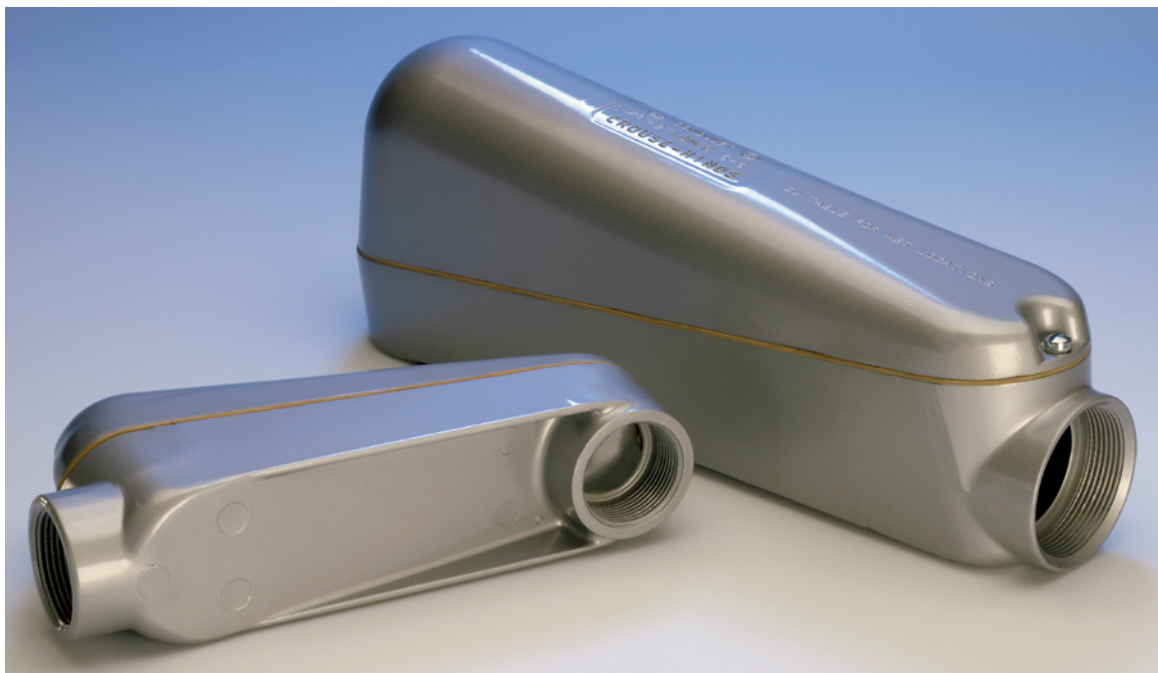
Cooper Crouse-Hinds Canada  
Toll Free: 800-265-0502  
FAX: (800) 263-9504  
FAX Orders only: (866) 653-0645





# Mogul Pulling Elbows

 **COOPER** Crouse-Hinds



# Mogul Pulling Elbows



Cooper Crouse-Hinds mogul pulling elbows facilitate wire pulling in 90° bends to allow changes in conductor direction. The pulling elbows can also be used to allow conductor entrance into buildings. With the smooth finish and large dome cover, wires can be easily pulled through without compromising the wire insulation. The gasketed cover creates a raintight chamber and the copper-free aluminum construction provides increased corrosion resistance, making the mogul pulling elbow ideal for any outdoor application.

## APPLICATIONS

- Used as a chamber for containing heavy-duty conductors
- For use as a chamber for containing a 90° turn in large stiff conductors to change conductor direction or to enter buildings
- For use as a pull box for pulling large conductors
- For use as a chamber for making splices and taps
- Can be used as an accessible opening to accommodate future changes of the system

## FEATURES & BENEFITS

- Large dome cover permits easy, straight through pull
- Dimension from center-line of back hub to bushing of end hub exceeds six times the trade diameter of the conduit
- Tapered threads provide easy assembly, tight construction
- Heavy-duty machine screws for cover
- Cover gasket provides long dependable service and protection against the elements; such as fuel, oil and water
- Smooth design and finish make handling easy and complement any construction job

## FEATURES & BENEFITS

- Body and Cover: Die-cast copper-free aluminum
- Gasket—Fuel, oil, and water resistant flex seal

## STANDARD FINISHES

- Corrosion-resistant metallic paint

## CERTIFICATIONS & COMPLIANCES

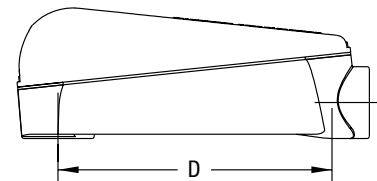
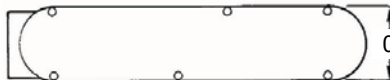
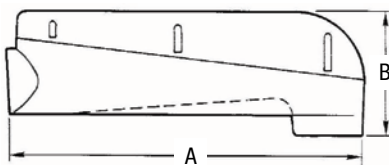
- UL Standard: 514B
- NEC: Article 370
- CSA C22.2 No. 18
- CEC: 22.1

## ORDERING INFORMATION

## DIMENSIONS

Catalog No.	Size	A	B	C	D	Std. Unit Pkg.	Wt. Lbs Per 100
LBNEC3	1"	9-21/32"	3-17/32"	2-1/2"	7-1/2"	2	146
LBNEC4	1-1/4"	9-21/32"	3-17/32"	2-1/2"	7-1/2"	2	132
LBNEC5	1-1/2"	14-17/32"	5-13/32"	3-1/8"	12-1/20"	1	258
LBNEC6	2"	14-17/32"	5-13/32"	3-1/8"	12-1/20"	1	230
LBNEC7	2-1/2"	22"	7-17/32"	4-1/2"	18-5/32"	1	1003
LBNEC8	3"	22"	7-17/32"	4-1/2"	18-5/32"	1	938
LBNEC9	3-1/2"	28-27/32"	8-15/16"	5-1/2"	24-1/8"	1	2158
LBNEC10	4"	28-27/32"	8-15/16"	5-1/2"	24-1/8"	1	2060

## DIMENSIONS



### Cooper Crouse-Hinds — US

PO Box 4999  
Syracuse, NY 13221  
Toll Free: (866) 764-5454  
FAX: (315) 477-5179 FAX Orders Only: (866) 653-0640  
crouse.customerctr@cooperindustries.com

### Canada:

Cooper Crouse-Hinds Canada  
Toll Free: 800-265-0502  
FAX: (800) 263-9504  
FAX Orders only: (866) 653-0645