



# INCANDESCENT LOUVERED NIGHT LIGHT

## INCANDESCENT LAMP ICTC113

Project: \_\_\_\_\_

Fixture Type: \_\_\_\_\_

Location: \_\_\_\_\_

Contact/Phone: \_\_\_\_\_

### PRODUCT DESCRIPTION

ICTC Housing designed for use in insulated or non-insulated areas. Refer to lamp data for correct lamp wattage.

### PRODUCT SPECIFICATIONS

**Lamp** IC - One 25W A19 lamp • TC - One 40W A19 lamp.

**Socket** Medium base porcelain with nickel-plated copper screw shell.

**Trims** Available in white baked enamel on steel • Fastens to housing with two torsion springs.

**Labels** UL listed for damp locations and IP • Product thermally protected against improper use of lamps • Union made • UL Listed/CSA certified.

**Testing** All reports are based on published industry procedures; field performance may differ from laboratory performance.

Specifications subject to change without notice.

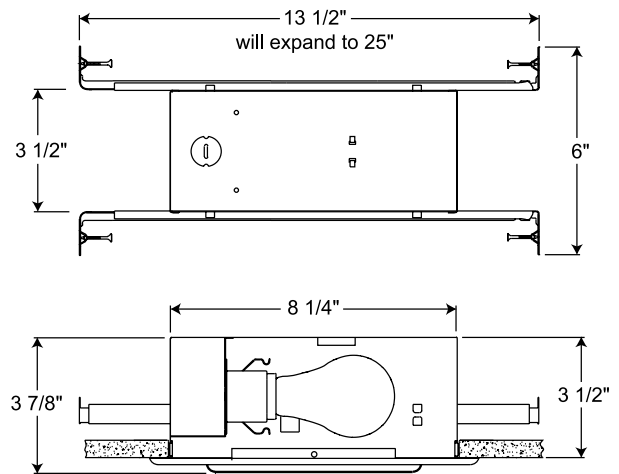
### INSTALLATION

**Real Nail 3 Bar Hangers** Telescoping, Patented (US Patent D552,969) Real Nail® 3 system permits quick placement of housing anywhere within 24" O.C. joists or suspended ceilings • Integral T-bar notch and clip secures housing in suspended ceiling grid – no accessory clips required • 24" expansion stop allows quick placement of fixture in standard grid spacing • Bars scored in two locations for fast, clean breaking, allowing housing installation in tight applications • Bars captive to mounting frame • Edge-mounted for extra strength • Captive bugle-headed ring shank nail for quick one-step installation and easy removal with claw hammer for fixture relocation • Quick-Loc slot and oversized locking set screw lock fixture in position • Bar hanger foot contoured to align to bottom of construction joist • Alternate mounting holes included.

**Junction Box** Pre-wired junction compartment provided with (3) 1/2" knockouts, and ground wire, UL Listed, C-UL/CSA certified for No. 12 AWG daisy chain circuit connectors suitable for 90° C permitted in junction box • Junction compartment provided with removable access plate • Knockouts equipped with pryout slots.

**Housing** TC housing, 22-gauge white painted steel • 8 1/4" L x 3 1/2" H x 3 1/2" D.

### DIMENSIONS



8 3/4" X 3 3/4" WALL CUTOUT

**ORDERING INFORMATION:** Housing and trim can be ordered together or separate, but will always ship separately.

Example (Housing): <b>ICTC113</b>	Example (Trim): <b>104 WH</b>	Example (Together): <b>ICTC113 104 WH</b>
<b>Series</b>	<b>Trims</b>	<b>Trim Finish</b>
ICTC113	104 Diffuse Glass Lens Step Light Trim	WH White
	840 Angled Louvers Step Light Trim	

Trim Size: 9 1/8" L x 4 7/8" H  
Lamp Rating: 7W or 9W Twin Tube CFL.



# INCANDESCENT LOUVERED NIGHT LIGHT

## INCANDESCENT LAMP ICTC113

Project: \_\_\_\_\_

Fixture Type: \_\_\_\_\_

Location: \_\_\_\_\_

Contact/Phone: \_\_\_\_\_

### PRODUCT DESCRIPTION

ICTC Housing designed for use in insulated or non-insulated areas. Refer to lamp data for correct lamp wattage.

### PRODUCT SPECIFICATIONS

**Lamp** IC - One 25W A19 lamp • TC - One 40W A19 lamp.

**Socket** Medium base porcelain with nickel-plated copper screw shell.

**Trims** Available in white baked enamel on steel • Fastens to housing with two torsion springs.

**Labels** UL listed for damp locations and IP • Product thermally protected against improper use of lamps • Union made • UL Listed/CSA certified.

**Testing** All reports are based on published industry procedures; field performance may differ from laboratory performance.

Specifications subject to change without notice.

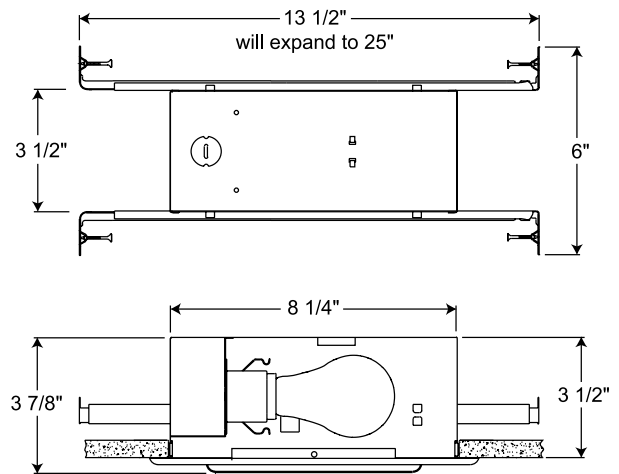
### INSTALLATION

**Real Nail 3 Bar Hangers** Telescoping, Patented (US Patent D552,969) Real Nail® 3 system permits quick placement of housing anywhere within 24" O.C. joists or suspended ceilings • Integral T-bar notch and clip secures housing in suspended ceiling grid – no accessory clips required • 24" expansion stop allows quick placement of fixture in standard grid spacing • Bars scored in two locations for fast, clean breaking, allowing housing installation in tight applications • Bars captive to mounting frame • Edge-mounted for extra strength • Captive bugle-headed ring shank nail for quick one-step installation and easy removal with claw hammer for fixture relocation • Quick-Loc slot and oversized locking set screw lock fixture in position • Bar hanger foot contoured to align to bottom of construction joist • Alternate mounting holes included.

**Junction Box** Pre-wired junction compartment provided with (3) ½" knockouts, and ground wire, UL Listed, C-UL/CSA certified for No. 12 AWG daisy chain circuit connectors suitable for 90° C permitted in junction box • Junction compartment provided with removable access plate • Knockouts equipped with pryout slots.

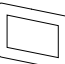

**Housing** TC housing, 22-gauge white painted steel • 8¼" L x 3½" H x 3½" D.

### DIMENSIONS



8 3/4" X 3 3/4" WALL CUTOUT

**ORDERING INFORMATION:** Housing and trim can be ordered together or separate, but will always ship separately.

Example (Housing): <b>ICTC113</b>	Example (Trim): <b>104 WH</b>	Example (Together): <b>ICTC113 104 WH</b>
<b>Series</b>	<b>Trims</b>	<b>Trim Finish</b>
<div style="border: 1px solid black; width: 100px; height: 15px; margin: 0 auto;"></div> <p><b>ICTC113</b></p>	<div style="border: 1px solid black; width: 100px; height: 15px; margin: 0 auto;"></div> <p><b>104</b> Diffuse Glass Lens Step Light Trim</p>  <p><b>840</b> Angled Louvers Step Light Trim</p> 	<div style="border: 1px solid black; width: 100px; height: 15px; margin: 0 auto;"></div> <p><b>WH</b> White</p>

Trim Size: 9 5/8" L x 4 7/8" H

Lamp Rating: 7W or 9W Twin Tube CFL.