

# NEER™ Safety Plates and Switch Box Supports

NEC:  
Rated for Ordinary Locations

NEC:  
Rated for Ordinary Locations

NEC:  
Rated for Ordinary Locations

## SP: Safety Plates

### Applications

- Installed over areas in wooden structures where cables are run to protect cable insulation from being damaged by protruding screws or nails.

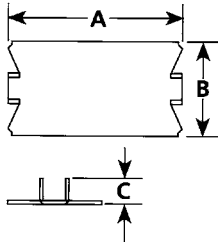
### Standard Material

- Pre-galvanized steel



SP-100

### Illustrated Dimensions



Trade Size (Inches)	Dimensions in Millimeters (Inches)			Catalog Number
	A	B	C	
1/16x1- 1/2x2-1/2	63.5 (2.50)	38.9 (1.53)	11.4 (0.45)	<b>SP-100</b>
1/16x1- 1/2x2-1/2	63.5 (2.50)	38.9 (1.53)	11.4 (0.45)	

## HI: Switch Box Supports

### Applications

- To support attachment of boxes in drywall, paneling, etc., where there are no means of attaching the box to a mounting structure.

### Feature

- Two are required per box.
- Sold in pairs.

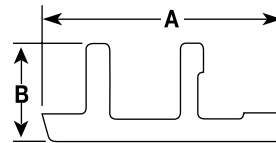
### Standard Material

- Pre-galvanized steel



HI-102

### Illustrated Dimensions



Trade Size (Inches)	Dimensions in Millimeters (Inches)		Catalog Number
	A	B	
—	129.8 (5.11)	57.2 (2.25)	<b>HI-102</b>

## KO: Knockout Seals

### Applications

- To close unused opening or knockout in sheet metal box, enclosure or cabinet.

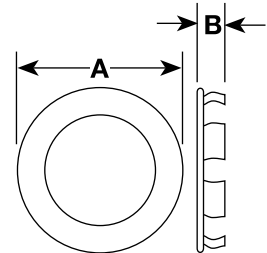
### Standard Material

- Steel/zinc plated



KO-50

### Illustrated Dimensions



Trade Size (Inches)	Dimensions in Millimeters (Inches)		Catalog Number
	A	B	
1/2	27.4 (1.08)	10.2 (0.40)	<b>KO-50</b>
3/4	31.8 (1.25)	8.4 (0.33)	<b>KO-75</b>
1	37.6 (1.48)	8.4 (0.33)	<b>KO-100</b>
1-1/4	46.0 (1.81)	8.4 (0.33)	<b>KO-125</b>
1-1/2	56.1 (2.21)	9.4 (0.37)	<b>KO-150</b>
2	68.1 (2.68)	9.7 (0.38)	<b>KO-200</b>

# NEER™ Safety Plates and Switch Box Supports

NEC:  
Rated for Ordinary Locations

NEC:  
Rated for Ordinary Locations

NEC:  
Rated for Ordinary Locations

## SP: Safety Plates

### Applications

- Installed over areas in wooden structures where cables are run to protect cable insulation from being damaged by protruding screws or nails.

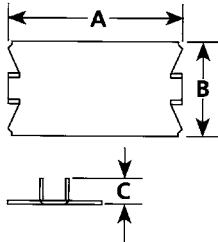
### Standard Material

- Pre-galvanized steel



SP-100

### Illustrated Dimensions



Trade Size (Inches)	Dimensions in Millimeters (Inches)			Catalog Number
	A	B	C	
1/16x1- 1/2x2-1/2	63.5 (2.50)	38.9 (1.53)	11.4 (0.45)	<b>SP-100</b>
1/16x1- 1/2x2-1/2	63.5 (2.50)	38.9 (1.53)	11.4 (0.45)	

## HI: Switch Box Supports

### Applications

- To support attachment of boxes in drywall, paneling, etc., where there are no means of attaching the box to a mounting structure.

### Feature

- Two are required per box.
- Sold in pairs.

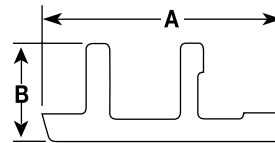
### Standard Material

- Pre-galvanized steel



HI-102

### Illustrated Dimensions



Trade Size (Inches)	Dimensions in Millimeters (Inches)		Catalog Number
	A	B	
—	129.8 (5.11)	57.2 (2.25)	<b>HI-102</b>

## KO: Knockout Seals

### Applications

- To close unused opening or knockout in sheet metal box, enclosure or cabinet.

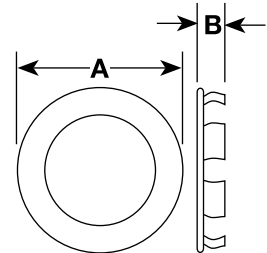
### Standard Material

- Steel/zinc plated



KO-50

### Illustrated Dimensions



Trade Size (Inches)	Dimensions in Millimeters (Inches)		Catalog Number
	A	B	
1/2	27.4 (1.08)	10.2 (0.40)	<b>KO-50</b>
3/4	31.8 (1.25)	8.4 (0.33)	<b>KO-75</b>
1	37.6 (1.48)	8.4 (0.33)	<b>KO-100</b>
1-1/4	46.0 (1.81)	8.4 (0.33)	<b>KO-125</b>
1-1/2	56.1 (2.21)	9.4 (0.37)	<b>KO-150</b>
2	68.1 (2.68)	9.7 (0.38)	<b>KO-200</b>