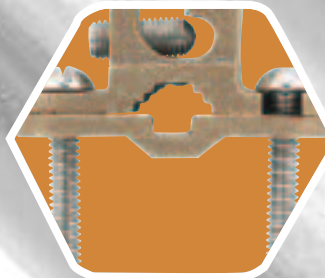
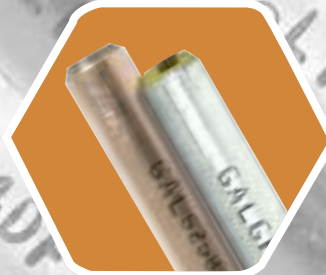


**Galvan Industries, Inc.**

galvanelectrical.com



**Electrical Products Catalog**  
**9th Edition**  
**With Revisions November 2011**



## By Product Category

Ground Rods . . . . .	5-6	Aluminum Mechanical Splices . . . . .	28
Ground Rod Clamps . . . . .	7	Lay-in Connectors . . . . .	29
Grounding Accessories . . . . .	8-9	Multi-Tap Connectors . . . . .	30-31
Pipe Clamps & Ground Rod Drivers . . . . .	9-10	Aluminium Tap Connectors . . . . .	33
Pipe Clamps & Bonding Grounding Connectors . . . . .	11	Compression Connectors . . . . .	34-39
Ground Clamps . . . . .	12-13	Compression Splices . . . . .	40-41
Utility & Groove Connectors . . . . .	14-18	Copper Mechanical Connectors . . . . .	42-43
Bonding & Grounding Connectors . . . . .	19-20	Wire Marker Books & Oxide Inhibitor . . . . .	44
Insulation Piercing Connectors . . . . .	21	Compression Tools . . . . .	45-47
Split Bolts . . . . .	22-23	U Dies . . . . .	48
Dual Rated Mechanical Connectors . . . . .	24-26		
Aluminum PanelBoard Connectors . . . . .	27		
2ABV . . . . .	27	GTC . . . . .	17
2CLA . . . . .	35	Ground Rods . . . . .	5-6
3ABV . . . . .	27	H . . . . .	14
4ABV . . . . .	27	IPC . . . . .	21
6ABV . . . . .	27	ITO . . . . .	31
A . . . . .	23	ISR . . . . .	31
C (solid copper rods) . . . . .	6	IPL . . . . .	31
C (ground clamps for rigid conduit) . . . . .	11	IPLD . . . . .	31
CC (hot line clamps) . . . . .	15	JAB (Heavy duty rod clamps) . . . . .	7
CC (vise connector) . . . . .	20	JD . . . . .	10
CC (1 hole compression lug) . . . . .	36	JRD . . . . .	10
CCB . . . . .	37	K (bonding clamp) . . . . .	19
CCBL . . . . .	39	K (copper split bolts) . . . . .	22
CCIT . . . . .	47	KCCA . . . . .	20
CCL . . . . .	38	L1 . . . . .	24
CLA . . . . .	34	L2 . . . . .	25
CF . . . . .	42	L3 . . . . .	26
CFS . . . . .	42	L4 . . . . .	26
CMCT . . . . .	45	LA . . . . .	24
CMIT . . . . .	46	LI . . . . .	29
CO-OX . . . . .	44	LIC . . . . .	29
CR . . . . .	9	MB . . . . .	44
CSL . . . . .	41	PAA . . . . .	16
CSS . . . . .	40	PAC . . . . .	16
DCG . . . . .	10	PB . . . . .	14
DGC . . . . .	18	PV . . . . .	27
DLA . . . . .	25	S (tin plated copper split bolt) . . . . .	22
Drive Studs . . . . .	9	SA . . . . .	35
FLC . . . . .	43	SR . . . . .	28
G (acorn clamps) . . . . .	7	SRC . . . . .	7
GC (dual-rated pipe clamps) . . . . .	9	TGC . . . . .	20
GC (water pipe clamps) . . . . .	10-13	TC . . . . .	33
GC (transformer ground connectors) . . . . .	15	TTC . . . . .	15
GH . . . . .	11	Tools . . . . .	45-47
GGPT . . . . .	33	U Dies . . . . .	48
GLH . . . . .	11	VC . . . . .	14
GP (ground plates) . . . . .	14		
GP100 . . . . .	14		
GRC (Ground Rod Coupling) . . . . .	8		
GRD . . . . .	9		
		<b>Cross-Reference . . . . .</b>	<b>49-70</b>



# Meet The Code

## Length, Diameter and Materials Matter In Determining if Ground Rods Meet Code

### A Listing Mark Is Your Assurance That All Requirements Are Met

Fact: Most ground rod electrodes at least 0.625 inches in diameter and eight feet in length meet the NEC, but that's not always the case. For example, copper-coated rods that don't have a minimum of 10 mils of copper do not meet code. Without the listing stamp, you don't know what the copper coating thickness actually is. Rods that aren't fully eight feet long do not meet code either, but once the rod has been driven it is difficult for inspectors to determine a rod's length. The listing mark - with manufacturer's ID - is the only sure way to know your galvanized or copper-coated rod is fully code compliant.

Listing of a ground rod assures you that the product you purchased was manufactured to comply with NEC standards. It also simplifies inspections since special tools and equipment are not required to ensure compliance with code.

### All Components Should Be Listed

According to Underwriters' Laboratories, mixing listed and non-listed components in a grounding system makes the whole system unlisted and potentially unsafe. That's why Galvan offers a complete listed grounding system including couplings, clamps, connectors, copper-clad ground rods and the only listed galvanized ground rods on the market today.

For more information about safe grounding or Galvan grounding products, contact Galvan at 704-455-5102 or go to [www.galvanelectrical.com](http://www.galvanelectrical.com). When safety matters, you can count on Galvan Electrical Products.

**Galvan Industries, Inc.**  
[galvanelectrical.com](http://galvanelectrical.com) • 1-800-277-5678



# GALVANIZED AND STAINLESS GROUND RODS



## Hot Dip Galvanized Ground Rods

- Outstanding corrosion resistance; high-strength steel is immersed in molten zinc forming a rust-proof barrier.
- Minimum zinc thickness 3.9 mils. (per ASTM A-123)
- Meets NEMA GR-1 and ANSI C135.30 requirements.
- Stamped for inspectability and traceability.
- Made in USA.



### Listed Rods (UL and/or CSA US and Canada)

Catalog Number	Matching Coupling	Nominal Diameter X Length	Actual Diameter Inches	Sub & Master Bundle	Wt. Per 100	NAED UPC No. 632591-	Color Code
GR6258 <sup>§</sup>	GRC-54G	5/8" x 8'	0.539-0.555	5 / 100	640	70702-2	Copper
GR6258F <sup>*§</sup>	GRC-625G	5/8" x 8'	0.625-0.640	5 / 100	770	61407-8	Yellow
GR6250 <sup>§○</sup>	GRC-54G	5/8" x 10'	0.539-0.555	5 / 100	941	70703-9	Copper
GR6250F <sup>*§</sup>	GRC-625G	5/8" x 10'	0.625-0.640	5 / 100	1040	61468-9	Yellow
GR7508F <sup>*§</sup>	GRC-34G	3/4" x 8'	0.750-0.769	5 / 50	1200	61478-8	Black
GR7510F <sup>§○</sup>	GRC-34G	3/4" x 10'	0.750-0.769	5 / 50	1500	61479-5	Black
GR1010F <sup>§</sup>	GRC-100C	1" x 10'	1.000-1.140	5 / 25	2900	61484-9	—

Notes: \* RUS Listed    <sup>§</sup>-Listed, meets the NEC Code    <sup>○</sup>-CSA Listed

Note: Rods less than 8' (96 inches) do not meet the requirements of UL, NESC nor NEC Codes.

Note: Most galvanized grounds are **NOT** listed.



Catalog Number	Matching Coupling	Nominal Diameter X Length	Actual Diameter Inches	Sub & Master Bundle	Wt. Per 100	NAED UPC No. 632591-	Color Code
<b>NON-LISTED RODS</b>							
GR5005*	GRC-12G	1/2" x 5'	0.484-0.500	10 / 100	334	70731-2	Green
GR5006	GRC-12G	1/2" x 6'	0.484-0.500	10 / 100	410	70732-9	Green
GR5008	GRC-12G	1/2" x 8'	0.484-0.500	10 / 100	534	70733-6	Green
GR6254	GRC-54G	5/8" x 4'	0.539-0.555	10 / 100	325	61303-3	—
GR6255	GRC-54G	5/8" x 5'	0.539-0.555	10 / 100	408	70700-8	—
GR6255F	GRC-625G	5/8" x 5'	0.625-0.640	5 / 100	470	61467-2	Yellow
GR6256	GRC-54G	5/8" x 6'	0.539-0.555	5 / 100	490	70701-5	—
GR6256F	GRC-625G	5/8" x 6'	0.625-0.640	5 / 100	574	61469-6	Yellow

Notes: \* RUS Listed

## 304 Solid Stainless-Steel Ground Rods

- Stamped for inspectability and traceability.
- Made in USA.
- 316 Stainless available upon request.



Catalog Number	Matching Coupling	Nominal Diameter X Length	Actual Diameter Inches	Sub & Master Bundle	Wt. Per 100	NAED UPC No. 632591-
S5010*	GRC-12SS	1/2" x 10'	0.500-0.515	5 / 25	910	61485-6
S6255S	GRC-58SST	5/8" x 5'	0.625-0.635	5 / 25	525	70737-4
S6256	GRC-58SS	5/8" x 6'	0.625-0.635	5 / 25	624	70738-1
S6258* **	GRC-58SS	5/8" x 8'	0.625-0.635	5 / 25	832	70745-9
S6258S*	GRC-58SST	5/8" x 8'	0.625-0.635	5 / 25	832	61496-2
S6260*	GRC-58SS	5/8" x 10'	0.625-0.635	5 / 25	1040	70726-8
S6260S*	GRC-58SST	5/8" x 10'	0.625-0.635	5 / 25	1040	70725-1
S6212	GRC-58SS	5/8" x 12'	0.625-0.635	5 / 25	1248	70723-7
S7508*	GRC-34SS	3/4" x 8'	0.750-0.765	5 / 25	1200	61483-2
S7508S*	GRC-34SST	3/4" x 8'	0.750-0.765	5 / 25	1200	61486-3
S7510*	GRC-34SS	3/4" x 10'	0.750-0.765	5 / 25	1500	70734-3
S7510S*	GRC-34SST	3/4" x 10'	0.750-0.765	5 / 25	1500	70759-6
S1010*	GRC-100SS	1" x 10'	1.000-1.020	5 / 25	2700	70710-7
S1010S*	GRC-100SST	1" x 10'	1.000-1.020	5 / 25	2700	70711-4

Notes: S Suffix-Denotes sectional ground rod    \* Denotes Listed CSA for US and Canada  
\*\* RUS and Listed CSA for US and Canada

## Pig-Tail Rods

- Made in USA.



Contact factory for quotation of copper-coated and hot-dip galvanized pig-tail rods. Provide rod type, size, wire type, gage and length. An example: 5/8" x 8' copper coated rod with 4' of #6 bare solid copper pig tail to be attached 6" from top or drive end of the rod.



# COPPER BONDED GROUND RODS

## Copper Coated Ground Rods

- Galvan's copper coated rods have a heavy, uniform coating of copper metallurgically bonded to a rigid steel core.
- UL Listed rods have 10-mil minimum copper plating. UL/RUS models have 13-mil minimum of copper.
- Galvan manufactures copper-coated rods under patent 6,527,934.
- Rods less than eight feet or less than 10 mils of copper, do not meet UL requirements, nor the NEC Code.
- Made in USA.



Catalog Number	Matching Coupling	Nominal Diameter X Length	Actual Diameter Inches	Sub & Master Bundle	Wt. Per 100	NAED UPC No. 632591-	Color Code
5005	—	1/2" x 5'	0.471-0.481	5 / 100	305	61125-1	Green
5006	—	1/2" x 6'	0.471-0.481	5 / 100	370	61126-8	Green
5008L*	50-TC	1/2" x 8'	0.500-0.510	5 / 100	545	61138-1	Orange
5010L*	50-TC	1/2" x 10'	0.500-0.510	5 / 100	690	61130-5	Orange
6254	—	5/8" x 4'	0.555-0.565	5 / 100	340	61487-0	Red
6255	—	5/8" x 5'	0.555-0.565	5 / 100	424	61585-3	Red
6256	—	5/8" x 6'	0.555-0.565	5 / 100	508	61586-0	Red
6258*	60-TC	5/8" x 8'	0.555-0.565	5 / 100	680	61588-4	Copper
6258G13**	60-TC	5/8" x 8'	0.555-0.565	5 / 100	700	61217-3	Yellow
6260*	60-TC	5/8" x 10'	0.555-0.565	5 / 100	847	61580-8	Copper
6260G13**	60-TC	5/8" x 10'	0.555-0.565	5 / 100	860	61218-0	Yellow
6262*	60-TC	5/8" x 12'	0.555-0.565	5	1000	61474-0	Copper
6265*	60-TC	5/8" x 15'	0.555-0.565	5	1275	61475-7	Copper
7508*	70-TC	3/4" x 8'	0.673-0.683	5 / 50	992	61548-8	Black
7510*	70-TC	3/4" x 10'	0.673-0.683	5 / 50	1240	61340-8	Black
7512*	70-TC	3/4" x 12'	0.673-0.683	5	1475	61476-4	Black
7515*	70-TC	3/4" x 15'	0.673-0.683	5	1850	61477-1	Black
1010*	80-TC	1" x 10'	0.907-0.917	3/50	2248	61440-5	—

Notes: \* These rods are UL Listed

\*\* This rod meet the requirements of UL & RUS (13 mils minimum of copper).

## Copper Coated Sectional Ground Rods

- Threaded on both ends.
- Made in USA.



Catalog Number	Matching Coupling	Nominal Diameter X Length	Actual Diameter Inches	Sub & Master Bundle	Wt. Per 100	NAED UPC No. 632591-	Color Code
5008LS*	50-LC	1/2" x 8'	0.500-0.510	5/100	545	63138-9	Orange
5010LS*	50-LC	1/2" x 10'	0.500-0.510	5/100	690	63130-3	Orange
6258S*	60-C	5/8" x 8'	0.555-0.565	5/100	678	63588-2	Copper
6260S*	60-C	5/8" x 10'	0.555-0.565	5/100	847	63580-6	Copper
7508S*	70-C	3/4" x 8'	0.673-0.683	5/50	922	63348-2	Black
7510S*	70-C	3/4" x 10'	0.673-0.683	5/50	1240	63340-6	Black
1010S*	80-C	1" x 10'	0.907-0.917	25	2248	63440-3	—

Notes: \* These rods are UL Listed

Rods less than eight feet or less than 10 mils of copper, **do not** meet UL requirements nor the NEC Code.

## Solid Copper Rods

- Made in USA.
- Manufactured from solid C11000 copper

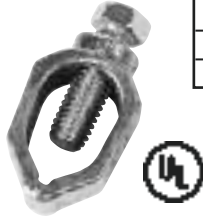


Catalog Number	Nominal Diameter X Length	Actual Diameter Inches	Sub & Master Bundle	Wt. Per 100	NAED UPC No. 632591-
C6258	5/8"x8'	0.623-0.627	5/25	9.5	61488-7
C6260	5/8"x10'	0.623-0.627	5/25	11.9	61489-4
C7510	3/4"x10'	0.748-0.752	5/25	17.1	61490-0



## SRC Universal Ground Rod Clamp

- Bronze alloy or stainless steel hardware both UL listed and approved for direct burial in earth and concrete.
- Performs the functions of economy, standard duty, heavy duty, and extra heavy duty.
- Able to withstand torque in excess of 350 in/lb.
- RUS listed.



One Clamp Fits 1/2, 5/8 and 3/4 Rod Diameters.

Catalog Number	Rod Size	Conductor Range	Sub & Master Pack	Wt. Per 100	NAED UPC No. 632591-
SRC	1/2"	1/0 Str. - 10 Sol.	100	16	613286
SRC	5/8"	1/0 Str. - 10 Sol.	100	16	613286
SRC	3/4"	1/0 Str. - 10 Sol.	100	16	613286

**Notes:** Listed for galvanized and copper ground rods  
UL Listed for US and Canada

This clamp accommodates all 1/2 and 5/8-inch rod diameters, and 3/4-inch copper-coated rods only. Will not fit 3/4-inch full-size galvanized, stainless steel or solid copper rods.

## Ground Rod Clamps (Hex-Head)

- Bronze alloy or stainless steel hardware both UL listed and approved for direct burial in earth and concrete.
- Cast copper alloy body with hex head bolt provides simple trouble-free connection at low cost.



Catalog Number	Rod Size	Conductor Range	Sub & Master Pack	Wt. Per 100	NAED UPC No. 632591-
G-3	3/8"	4 Str. - 10 Sol.	100 / 800	6	70706-0
G-4*(Use G-5)	1/2"	2 Str. - 10 Sol.	100 / 800	9	70707-7
G-5*§	5/8-1/2"	2 Str. - 10 Sol.	50 / 400	10	70708-4
G-6*‡	3/4"	2 Str. - 10 Sol.	50 / 400	11	70709-1

**Notes:** \*-These items UL and CSA Listed in US and Canada for direct burial in earth and concrete.

‡-The G-6 fits all 3/4-inch diameter rods regardless of actual or nominal diameter.

§- This item UL Listed for use on 1/2" and 5/8" copper-coated and galvanized rods, and #4 (1/2") rebar, buried in earth or concrete. Also RUS Listed.

## Ground Rod Clamps (Hex-Head Tin-Plated)

- Bronze alloy or stainless steel hardware approved for direct burial in earth and concrete.
- Cast copper alloy body with hex head bolt provides simple trouble-free connection at low cost on galvanized ground rods.



Catalog Number	Rod Size	Conductor Range	Sub & Master Pack	Wt. Per 100	NAED UPC No. 632591-
G3P	3/8"	4 Str. - 10 Sol.	100 / 800	6	61135-0
G4P*	1/2"	2 Str. - 10 Sol.	100 / 800	9	61219-7
G5P*	5/8-1/2"	2 Str. - 10 Sol.	50 / 400	10	61220-3
G6P	3/4"	2 Str. - 10 Sol.	50 / 400	11	61221-0

**Notes:** \* RUS Listed and marked per RUS specification and traceability.

## Heavy-Duty Ground Rod Clamps (Hex-Head)

- Bronze alloy or stainless steel hardware both UL listed approved for direct burial in earth and concrete.
- Ground connection is secured by long bearing surface of clamp on ground wire.
- High-strength corrosion-resistant copper alloy. All Heavy Duty clamps UL Listed for direct burial in earth and concrete.



Catalog Number	Rod Size	Conductor Range	Sub & Master Pack	Wt. Per 100	NAED UPC No. 632591-
JAB12H	1/2"	2 Str. - 10 Sol.	100 / 800	12	70715-2
JAB58H	5/8"	1/0 Str. - 8 Sol.	50 / 400	13	70716-9
JAB58HH*	5/8"	1/0 Str. - 8 Sol.	50 / 400	14	61311-8
JAB34H	3/4"	1/0 Str. - 8 Sol.	25 / 250	15	70717-6
JAB34HH	3/4"	3/0 Str. - 8 Sol.	25 / 200	17	61495-5
JAB1H	1"	4/0 Str. - 8 Sol.	50 / 400	25	70718-3

**Notes:** \*-HH represents "Heavy duty hex head design screw 1/2" - 13 threads

-These items UL and CSA Listed except for JAB58HH and JAB34HH

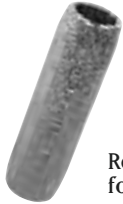
JAB58H Listed for US and Canada - 7/16 -14 threads



# GROUND ROD COUPLINGS

Refer to ground rod part number for appropriate coupling

## Threadless Couplings for "Copper-Coated" Rods - Cast Bronze



Refer to ground rod part number for appropriate coupling

Catalog Number	Rod Size	Pcs. Per Ctn.	Wt. Per 100	NAED UPC No. 632591-
50-TC*	1/2"	25	22	61344-6
60-TC**	5/8"	25	25	70724-4
70-TC*	3/4"	10	40	61223-4

Notes: \* UL and CSA Listed/For use with UL and/or CSA Listed copper-coated rods only.  
\*\* UL and RUS Listed/For use with UL Listed copper-coated rods only.

## Threaded Couplings for "Copper-Coated" Sectional Rods - Cast Bronze



Refer to ground rod part number for appropriate coupling

Catalog Number	Rod Size	Pcs. Per Ctn.	Wt. Per 100	NAED UPC No. 632591-
50-LC*	1/2" (9/16"-12)	25	17	70735-0
60-C**	5/8" (5/8"-11)	25	25	70720-6
70-C*	3/4" (3/4" - 10)	25	40	70721-3
80-C*	1" (1"-8)	25	100	70722-0

Notes: \* UL and CSA Listed for US and Canada  
\*\* UL, RUS and CSA Listed  
Made from high-strength corrosion-resistant copper alloy, tapped for use on all standard threaded sectional rods.

## Threadless Couplings for "Hot-Dip Galvanized" Rods - Plated Steel

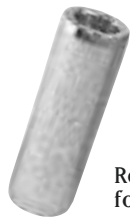


Refer to ground rod part number for appropriate coupling

Catalog Number	Rod Size	Pcs. Per Ctn.	Wt. Per 100	NAED UPC No. 632591-
GRC-54G <sup>a</sup>	5/8"	100	30	61134-3
GRC-625G <sup>o</sup>	5/8"	100	30	61132-9
GRC-34G	3/4"	25	38	61133-6
GRC-100F <sup>s</sup>	1"	25	90	61492-4

Notes: <sup>a</sup> For GR6258 /UL Listed      <sup>o</sup> For GR6258F  
<sup>s</sup> Coupling CSA Listed for US and Canada

## Threadless Couplings for "Stainless Steel" Rods (304 Stainless)



Refer to ground rod part number for appropriate coupling

Catalog Number	Rod Size	Pcs. Per Ctn.	Wt. Per 100	NAED UPC No. 632591-
GRC-58SS	5/8"	25	30	70683-4
GRC-34SS	3/4"	25	38	70684-1
GRC-100SS	1"	25	90	61493-1

Notes: Listed by CSA for US and Canada

## Threaded Couplings for "Stainless Steel" Rods (304 Stainless)



Refer to ground rod part number for appropriate coupling

Catalog Number	Rod Size	Pcs. Per Ctn.	Wt. Per 100	NAED UPC No. 632591-
GRC-58SST	5/8" (5/8" - 11)	25	30	61122-0
GRC-34SST	3/4" (3/4" - 10)	25	38	61123-7
GRC-100SST	1" (1" - 8)	25	90	61494-8

Notes: Listed by CSA for US and Canada



## Drive Studs for All Copper-Clad & Stainless Steel Rods



Catalog Number	Rod Size	Pcs. Per Ctn.	Wt. Per 100	NAED UPC No. 632591-
50-LDS	1/2" (9/16"-12)	10	16	70736-7
60-DS	5/8" (5/8"-11)	10	23	70728-2
70-DS	3/4" (3/4"-10)	10	35	70729-9
80-DS	1"(1"-8)	10	75	70730-5

**Notes:** High strength steel driving studs for use with standard UL Listed threaded couplings.

## Ground Rod Driver

- Made in the U.S.A.
- High-quality materials, design and construction.
- For 5/8" or 3/4" copper-coated and galvanized rods.
- Drives flush or below grade.
- No ladder, no kneeling.
- Safer than hammers.
- No mushrooming of rods.
- Also drives rebar.
- BEST OF ALL – cost effective enough to have one on every truck in your fleet!

Catalog Number	Description	Maximum Rod Diameter (in.)	Pcs. Per Ctn.	Wt. (lbs.)	NAED UPC No. 632591-
GRD58	Ground rod driver body with 5/8" diameter insert	.63	1	23	61385-9
GRD34	Ground rod driver body with 3/4" diameter insert	.75	1	23	61386-6
GRDI58	5/8" diameter insert (replacement)	.63	1	6	61387-3
GRDI34	3/4" diameter insert (replacement)	.75	1	6	61388-0
CR	cable retainer (replacement)	-NA-	1	-	61389-7

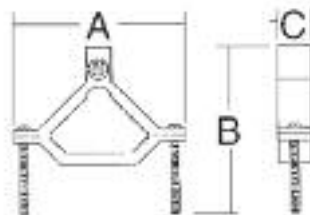
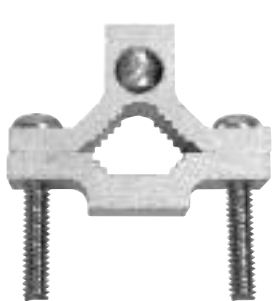
**Note:** Inserts are interchangeable with the ground rod driver body.



## Dual-rated Aluminum Ground Clamps

- For connecting ground conductor to steel or copper pipe or tubing.
- Tin plated for corrosion resistance.
- Dual-rated for copper or aluminum conductor.

Catalog Number	Pipe Size	Cond. Range	Pcs. Per Ctn.	Wt. Per 100	Dimensions			NAED UPC No. 632591-
					A	B	C	
GC1	1/2" - 1"	1/0-14	25	19	2.25	2.50	0.63	61132-9
GC21	1-1/4" - 2"	250-6	10	24	3.75	3.87	0.87	61133-6
GC41	2-1/2" - 4"	250-6	10	49	6.31	5.62	0.87	61134-3



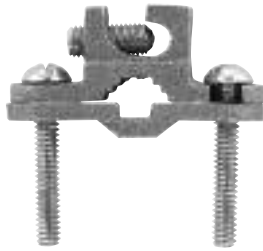




# COPPER PIPE CLAMPS

## Direct Burial Ground Clamp

- Constructed from bronze alloy and stainless-steel screws for direct burial in earth and concrete.
- Lay-In feature simplifies routing of conductor during installation.
- Combines several pipe-type clamps into a single inventory item.
- UL Listed for "direct burial".
- Represents a cost-reduction for distributor and end-user alike.
- Ideal for pool & spa bonding.
- Constructed from bronze alloy with brass or stainless steel screws for direct burial in earth and concrete.



JRD  E198108

	Size	Conductor Range	Sub & Master Pack	Wt. Per 100	NAED UPC No. 632591-
Rebar Size	3/8" - 1"	10 Sol.-2 Str.	25/100	25	61327-9
Pipe Size	1/2" - 1"	10 Sol.-2 Str.	25/100	25	61327-9
Rod Size	1/2" - 1"	10 Sol.-2 Str.	25/100	25	61327-9

• One universal clamp for pipe, rebar, and ground rod.



JRD - 4/0  E198108

	Size	Wire Range	Sub & Master Pack	Wt. Per 100	NAED UPC No. 632591-
Rebar Size	3/8" - 1"	#8 Str. - 4/0 Str.	25/100	56	61327-9
Pipe Size	1/2" - 1"	#8 Str. - 4/0 Str.	25/100	56	61327-9
Rod Size	1/2"-3/4"	#8 Str. - 4/0 Str.	25/100	56	61327-9

## Bolted Water Pipe Ground Clamps

All clamps except DCG are manufactured from high-strength corrosion-resistant copper alloy.



 E117523

Catalog Number	Pipe Size	Conductor Range	Sub & Master Pack	Wt. Per 100	NAED UPC No. 632591-
<b>COPPER ALLOY, UL LISTED</b>					
GC (GC-5)	1/2" - 1"	10 Sol.-2 Str.	25/100	21	70739-8
GC2	1-1/4" - 2"	10 Sol.-2 Str.	50	42	70741-1
G2124	2-1/2" - 4"	10 Sol.-2 Str.	20	105	61266-1
G4146	4-1/4" - 6"	10 Sol.-4 Str.	10	194	61226-5
<b>UL LISTED, DIRECT BURIAL</b>					
JD	1/2" - 1"	10 Sol. - 2 Str.	25/200	21	70758-9
JD2	1-1/4" - 2"	10 Sol.-2 Str.	50	48	61301-9
<b>ZINC DIE CAST, UL LISTED</b>					
DCG	1/2" - 1"	8 Sol.-2 Str.	25/250	15	70744-2
<b>COPPER ALLOY, NON UL LISTED</b>					
GCJ	1/2" - 1"	10 Sol.-4 Str.	25/100	16	70740-4

# PIPE CLAMPS AND BONDING & GROUNDING CONNECTORS



## Ground Clamps for Rigid Conduit With Copper Strap

- Used to connect grounding conductor in rigid conduit to water pipe for grounding.
- Copper strap allows flexibility during grounding and helps protect conduit system from the effects of vibrations in water system.
- Available with 360° swing hub (LH).
- Cast from high strength, highly conductive copper alloy.

Catalog Number	Pipe Size	Pcs. Per Ctn.	Wt. Per 100	Cond Size	Technical Data		NAED UPC No. 632591-
					Min Wire Sz.	Max Wire Sz.	
GC-11CSLH-1	1/2" - 1"	35	54	1/2"	10 sol.	6 str.	61228-9
GC-11CSLH-2	1/2" - 1"	30	58	3/4"	10 sol.	2/0 str.	61230-2
GC-11CSLH-3	1/2" - 1"	30	68	1"	10 sol.	3/0 str.	61232-6



E88878



## Conduit Hubs

- Used with ground pipe clamp to connect rigid conduit to water pipe for grounding.
- 360° swing type hub provides flexibility in connection.
- Cast from high strength, highly conductive copper alloy.



### Regular Type

Catalog Number	Conduit Size	Pcs. Per Ctn.	Wt. Per 100	Technical Data		NAED UPC No. 632591-
				Min Wire Sz.	Max Wire Sz.	
GH-1	1/2"	150	11	8 sol.	4 str.	61260-9
GH-2	3/4"	75	20	8 sol.	4 str.	61261-6
GH-3	1"	50	25	8 sol.	4 str.	61262-3

### 360° Swing Hub



E88878



Catalog Number	Conduit Size	Pcs. Per Ctn.	Wt. Per 100	Technical Data		NAED UPC No. 632591-
				Min Wire Sz.	Max Wire Sz.	
GLH-1	1/2"	50	20	10 sol.	6 str.	61263-0
GLH-2	3/4"	50	29	10 sol.	2/0 str.	61264-7
GLH-3	1"	25	31	10 sol.	3/0 str.	61265-4

## Ground Clamps For Rigid Conduit

- Used to connect grounding conductor in rigid conduit to water pipe for grounding.
- Available with zinc plated screws.
- Cast from high strength, highly conductive copper alloy.

### With Steel Screws

Catalog Number	Pipe Size	Pcs. Per Ctn.	Wt. Per 100	Cond Size	Technical Data		NAED UPC No. 632591-
					Min Wire Sz.	Max Wire Sz.	
C-61	1/2" - 1"	25	34	1/2"	8 Sol.	4 str.	61239-5
C-62	1/2" - 1"	25	40	3/4"	8 Sol.	4 str.	61240-1
C-63	1/2" - 1"	25	47	1"	8 Sol.	4 str.	61241-8
C-66	1-1/4" - 2"	25	52	1/2"	8 Sol.	4 str.	61242-5
C-67	1-1/4" - 2"	25	59	3/4"	8 Sol.	4 str.	61243-2
C-68	1-1/4" - 2"	25	63	1"	8 Sol.	4 str.	61244-9



E88878





## GROUND CLAMPS

### Ground Clamps For Rigid Conduit with Swivel Hub

- Used to connect grounding conductor in rigid conduit to water pipe for grounding.
- Hub swings 360° for easy alignment.
- Assembled with zinc plated steel screws.
- Cast from high strength, highly conductive copper alloy.



E88878



Catalog Number	Pipe Size	Pcs. Per Ctn.	Wt. Per 100	Cond Size	Technical Data		NAED UPC No. 632591-
					Min Wire Sz.	Max Wire Sz.	
GC-11LH-1	1/2" - 1"	25	41	1/2"	10 sol.	6 str.	61245-6
GC-11LH-2	1/2" - 1"	25	50	3/4"	10 sol.	2/0 str.	61246-3
GC-11LH-3	1/2" - 1"	25	55	1"	10 sol.	3/0 str.	61247-0
GC-22LH-1	1-1/4" - 2"	25	66	1/2"	10 sol.	6 str.	61248-7
GC-22LH-2	1-1/4" - 2"	25	69	3/4"	10 sol.	2/0 str.	61249-4
GC-22LH-3	1-1/4" - 2"	25	76	1"	10 sol.	3/0 str.	61250-0
GC-4LH-1	2-1/2" - 4"	10	124	1/2"	10 sol.	6 str.	61251-7
GC-4LH-2	2-1/2" - 4"	10	131	3/4"	10 sol.	2/0 str.	61252-4
GC-4LH-3	2-1/2" - 4"	10	133	1"	10 sol.	3/0 str.	61253-1

### Ground Clamps for Armored Cable 360° Swivel Type



E88878



Catalog Number	Pipe Size	Pcs. Per Ctn.	Wt. Per 100	Technical Data		NAED UPC No. 632591-
				Min Wire Sz.	Max Wire Sz.	
GC-11JA	1/2" to 1"	25	41	10 sol.	6 str.	61257-9
GC-22JA	1-1/4" to 2"	25	66	10 sol.	6 str.	61258-6
GC-4JA	2-1/2" to 4"	10	122	10 sol.	6 str.	61259-3



## Ground Clamps for Armored Cable

- Used to connect armored cable to water pipe for grounding.
- Special pressure bar grips armored cable insulation to decrease chances of grounding conductor being pulled out.
- Available with steel or bronze screws.
- Cast from high strength, highly conductive copper alloy.



E88878



### With steel screws

Catalog Number	Pipe Size	Pcs. Per Ctn.	Wt. Per 100	Technical Data		NAED UPC No. 632591-
				Min Wire Sz.	Max Wire Sz.	
GC-6	1/2" - 1"	25/250	27	8 sol.	4 str.	61233-3
GC-7	1-1/4" - 2"	25	48	8 sol.	4 str.	61235-7
GC-71 <sup>§</sup>	2-1/2" - 4"	10	146	8 sol.	4 str.	61236-4
GC-72 <sup>§</sup>	4-1/2" - 6"	10	192	8 sol.	4 str.	61237-1

### With bronze screws for direct burial

Catalog Number	Pipe Size	Pcs. Per Ctn.	Wt. Per 100	Technical Data		NAED UPC No. 632591-
				Min Wire Sz.	Max Wire Sz.	
GC-6D	1/2" - 1"	25/250	28	8 Sol.	4 str.	61238-8

**Notes:**

<sup>§</sup>-UL Listed



**Vise-Connector**

- For main with tap
- One-piece, side loading.
- Cast copper.



Catalog Number	Conductor Range Tap/Main	Pcs. Per Ctn.	Wt. Per 100	NAED UPC No. 632591-
H1	6-14 Sol.	100	8	70754-1
H2	1/0 Str. - 8 Sol.	100	14	70755-8
VC-6SH*	#8 Sol. - #6 Sol.Cu	100	9	70750-3
VC-6SH-P*	#8 Sol. - #6 Sol.Cu	100	9	71506-5
VC-4	#8 Sol. - #4 Sol.Cu	50	15	70751-0
VC-2	#6 Sol. - #2 Sol.Cu	50	18	70752-7
VC-2S	#5 Sol. - #2 Str.Cu	50	18	61355-2
VC-20	#4 Sol. - 1/0 Str.Cu	50	25	61356-9
VC-20S	#3 Sol. - 2/0 Str.Cu	20	36	61357-6
VC-40	#1 Sol. - 4/0 Str.Cu	10	41	61358-3

\* P = Platted  
\* SH= Slotted-Head Bolt

**Copper Ground Plates**

- Made of solid 0.025" sheet copper
- Grounding lead connector of high-strength copper alloy.
- Less costly, more efficient than butt wrapping poles.

Catalog Number	Size	Conductor Range	Pcs. Per Ctn.	Wt. Per 100	NAED UPC No. 632591-
GP100	7.5" dia.	#14-#4 AWG	40	15	61359-0
PBGW	7x7 5/8	2/0 STR - 10 Sol.	40	15	61360-6
PBH	7x7 3/8	4 STR - 14 Sol.	40	15	61361-3



**Type GP**  
[round]

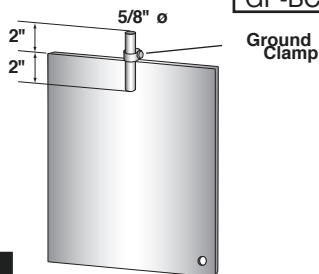


**Type PB**  
[square]

**Steel Ground Plates**

- Made of solid 0.25" steel.
- Galvanized or bare steel.
- Can ground as efficiently as two rods.
- For burial at least 24" below grade (CEC Rule 10-702).

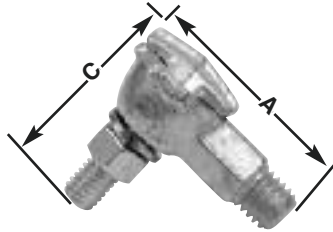
Catalog Number	Description	Dimensions	Pcs. Per Ctn.	Wt. Per 100	NAED UPC No. 632591-
GP-G	Galvanized Steel w/o connector	1/4"x10"x16"	4	1100	61362-0
GP-GC	Galvanized Steel with connector	1/4"x10"x16"	4	1150	61363-7
GP-B	Bare Steel w/o connector	1/4"x10"x16"	4	1100	61364-4
GP-BC	Bare Steel with connector	1/4"x10"x16"	4	1150	61365-1





### Type TTC Transformer Tank Ground Connectors

- High-conductivity bronze.
- 1/2" - 13 stud fits all standard EEI-NEMA distribution transformers.
- Accomodates cable in either horizontal or vertical direction.
- P suffix indicates tin plated connector.



Catalog Number	Conductor Range	Stud Thread Size	Dimensions			Pcs. Per Ctn.	Wt. Per 100	NAED UPC No. 632591-
			A-Length	Width	C-Height			
TTC-2	2/0 Str. to 8 Sol.	1/2--13	1-51/64	1-9/64	1-21/64	100	22	61366-8
TTC-3	1 Str. to 10 Sol.	1/2--13	1-3/8	1-3/64	1-9/16	100	20	61367-5
TTC-4	1 Str. to 10 Sol.	1/2--13	1-1/4	7/8	1-3/8	100	16	61368-2
TTC-2P	2/0 Str. to 8 Sol.	1/2--13	1-51/64	1-9/64	1-21/64	100	22	61369-9
TTC-3P	1 Str. to 10 Sol.	1/2--13	1-3/8	1-3/64	1-9/16	100	20	61370-5
TTC-4P	1 Str. to 10 Sol.	1/2--13	1-1/4	7/8	1-3/8	100	16	61371-2

### Type GC Transformer Ground Connectors



Catalog Number	Conductor Range	Stud Thread Size	Bolt	Pcs. Per Ctn.	Wt. Per 100	NAED UPC No. 632591-
VC207	8 Sol. to 1/0 Str.	1/2-13-UNC-2/4	9/16" Hex	25	10	61372-9

### Overhead Connectors – Hot Line Clamps

- Live line tool compatible.
- Choose bronze alloy or aluminum alloy castings.
- Easy installation.
- Extended jaw for improved connection.
- Corrosion resistant.



Catalog Number	Body	Wire Combination	Conductor Range				Pcs. Per Ctn.	Wt. Per 100	NAED UPC No. 632591-
			Main ACSR	Main AWG	Tap ACSR	Tap AWG			
CC1520	Bronze	Copper to Copper	-	2/0-8	-	2/0-8	50	70	61347-7
CC1520P	Plated Bronze	Copper or Aluminum	-	2/0-8	2/0-6	2/0-8	50	70	61348-4
CC1520AP9	Aluminum	Copper or Aluminum	2/0-6	2/0-8	2/0-6	2/0-8	50	35	61350-7
CC1530	Bronze	Copper to Copper	-	400-6 sol.	-	4/0-6 sol.	50	130	61351-4
CC1530P	Plated Bronze	Copper or Aluminum	-	400-6	3/0-6	4/0-6 sol.	50	135	61352-1
CC1530AP	Aluminum	Copper or Aluminum	397.4-6	400-6	3/0-6	4/0-6 sol.	50	70	61353-8
CC1530AP9	Aluminum	Copper or Aluminum (Bagged with Inhibitor)	397.4-6	400-6	3/0-6	4/0-6 sol.	50	75	61354-5

P designates tin-plated  
9 designates inhibitor filled



**Parallel Groove Clamps**

**Type PAA One- And Two-Bolt Aluminum**

- Made of high-strength aluminum alloy.
- Galvanized bolt, nut and lockwasher.
- Order prefilled with oxide inhibitor for bi-metallic use.



Catalog Number Standard	Catalog Number Prefilled	Bolts	Conductor Range				Pcs. Per Ctn.	Wt. Per 100	NAED UPC No. 632591-
			ACSR		Al or Cu				
			Main	Tap	Main	Tap			
	PAA 29	1	2--6	2--6	2 Str. -- 6 Sol.	2 Str. -- 6 Sol.	50	18	61402-3
	PAA 339	1	1/0--6	1/0--6	1/0 Str. -- 6 Sol.	1/0 Str. -- 6 Sol.			61403-0
PAA 4	PAA 49	1	1/0--6	1/0--6	1/0 Str. -- 6 Sol.	1/0 Str. -- 6 Sol.	50	18	61373-6
PAA 5	PAA 59	1	1/0--8	1/0--8	1/0 Str. -- 8 Sol.	1/0 Str. -- 8 Sol.	50	20	61374-3
PAA 6	PAA 69	1	1/0--8	1/0--8	2/0 Str. -- 6 Sol.	2/0 Str. -- 8 Sol.	50	22	61375-0
PAA 10	PAA 109	2	336.4--1/0 1/0 -- 6 AR	1/0--8	400--1/0 Str. 1/0 -- 6 AR	1/0Str. -- 8 Sol.	25	25	61376-7
PAA 12	PAA 129	2	4/0--2	4/0--2	4/0 Str. -- 2 Sol.	4/0 Str. -- 2 Sol.	20	29	61377-4
PAA 400	PAA 4009	2	336.4--1/0 1/0 -- 6 AR	336.4--1/0	400--1/0 Str. 1/0 -- 6 AR	400--1/0 Str.	20	120	61378-1

**Type PAC Aluminum With Copper Liner**

- Corrosion resistant design and construction.
- No assembly required.
- Cast aluminum body surrounds copper liner, sealing out moisture.



Catalog Number Standard	Conductor Range			Pcs. Per Ctn.	Wt. Per 100	NAED UPC No. 632591-
	Main		Tap			
	ACSR	Aluminum	Copper			
PAC 345	1/0--8	1/0 Sol.--8 Str.	1/0 Sol.--8 Str.	50	23	61380-4
PAC 7	336.4--1/0	400--2/0 1/0 -- 6 AR	1/0--8 Sol. 1/0 -- 6 AR	25	23	61379-8

**Note:** Add suffix "9" for prefilled with inhibitor



### Type GTC Tower Ground Clamps

- One- and two-piece designs available.
- High-strength copper alloy construction.
- Corrosion resistant.
- Stud size is 3/8".

Catalog Number	Conductor Range	Channel Thickness*	Construction	Pcs. Per Ctn.	Wt. Per 100	NAED UPC No. 632591-
GTC13	2/0 Str. -- 4 Sol.	1/4"	1-piece	25	21	61381-1
GTC14	250 KCMIL. -- 2/0 Str.	1/4"	1-piece	25	42	61382-8
GTC23	2/0 Str. -- 4 Sol.	1/4"	2-piece	25	26	61383-5
GTC24	250 KCMIL. -- 2/0 Str.	1/4"	2-piece	25	44	61384-2

\*Add suffix "L" to Catalog Number for 1/2" thickness



1-Piece



2-Piece





### Type DGC Drive-On Ground Clamp



Catalog Number	Ground Rod Size	Pieces/ Cartons	WT/ C	Ground Wire Size	NAED UPC No. 632591-
DGC-5844	5/8 (0.555 - 0.565)	50	20	1 or 2 - #4 Sol.	61329-3
DGC-5866	5/8 (0.555 - 0.565)	30	20	1 or 2 - #6 Sol.	61330-9

- For use on all 5/8" diameter UL Listed copper-coated ground rods.
- Used to bond one or two, #4 or #6, solid copper conductors respectively.
- Produced from high-strength copper alloy, the same material as UL Listed "acorn" type ground rod clamps.
- May be used effectively for direct-burial applications.
- To install, the only required tool is a hammer. Compression forces maximize the "direct" surface-to-surface copper contact between conductor and ground rod electrode.
- A drive-head should be used during installation of the ground rod electrode into the soil, thus minimizing any possible mushrooming or deformation on the drive (or chamfer) end of the rod. This will improve ease of installation of the drive-on clamp.
- This design places the grounding conductor in "direct" contact with the ground rod, thereby eliminating multiple paths for the current to follow, which could contribute to increased resistance.

**To Install:**

- Select the proper connector from the above chart.
- Drive the ground rod electrode to the proper depth per national or local code recommendations.
- Position connector and ground rod conductors as shown in middle illustration.
- Drive connector onto rod until top of connector is flush with top of ground rod as shown in adjacent illustration. Galvan suggests using a 20-ounce hammer.



## Bonding and Grounding Connectors

- Designed for easy installation, high conductivity and long life.
- Install with wrench (hex head) or pliers (square).



E117523

Catalog Number	Galv Steel Strand	Copper Tap	Pcs. Per Ctn.	Wt. Per 100	NAED UPC No. 632591-	Finish Description
K1**	1/4"-7/16"	#8 sol.- 2/0	100	16	70746-6	Fully Plated/Tap-Grooved
K2	1/4"-7/16"	#8 sol.- 2/0	100	16	70747-3	Fully Plated
K3	1/4"-7/16"	#8 sol.- 2/0	100	16	70748-0	Not Plated
KUL*	1/4"-7/16"	#8 sol.- 2/0	100	16	70749-7	Fully Plated

\*Denotes UL Listed, \*\* RUS Listed



# BONDING AND GROUNDING CONNECTORS

## Type TGC Beam Grounding Clamp

- Designed for grounding CATV and telecommunication installations.
- Connects solid copper conductors (#6 - #14) to permanently grounded metal frames.
- Square or hex-head bolt.
- Ground wire access from four directions.
- High-strength copper alloy body.
- High-strength anchoring bolt.
- UL 467 Listed.



E117523

Catalog Number	Description	Conductor Range	Pcs. Per Ctn.	Wt. Per 100	NAED UPC No. 632591-
TGC	Square Head Steel Bolt	#6 - #14 solid	100	35	613903
TGC-H	Hex Head Steel Bolt	#6-#14 solid	25	9	613910

## Figure 8 Or IM Cable Insulation Piercing Connector

- Cast Bronze.
- Tin Plated.
- Teeth pierce messenger insulation.



Catalog Number	Conductor Range	Pcs. Per Ctn.	Wt. Per 100	NAED UPC No. 632591-
CC167P	.146-.312 cable to .146-.312 tap	50	23	70753-4

**Notes:**

Teeth puncture insulation during tightening for a positive ground without skinning conductor.

## Kenny Clamp UL-Listed Connector

Galvan Kenny Clamps are your best choice to ensure that grounding electrode conductor installations are code compliant. The Kenny Clamp is UL-Listed for the bonding and grounding of electrode connectors in panel boards, pad mounts, dry-type transformers, metallic raceways and enclosures. Simply install Galvan's Kenny Clamp through a 1/2-inch knockout with paint removed, tighten the steel locknut, insert the grounding electrode through the clamp and tighten the compression nut. Your installation is now NEC Code compliant. The Kenny Clamp saves time and money compared to current non-compliant alternatives.

**Kenny Clamp**

- Eliminates potential for a choke at the hole.
- Meets UL 467 for bonding/grounding.
- Meets UL 486A for connectors.
- Complies with NEC 110.3(B) and 250.8 (using listed grounding or bonding connector for proper application).
- Complies with NEC 250.64(E) (entering and exiting metallic raceways and enclosures).



E225971

Catalog Number	Conductor Range	Pcs. Per Ctn.	Wt. Per 100	NAED UPC No. 632591-
KCCA-8 sol	#8 solid	10	125	613927
KCCA-8 str	#8 stranded	10	125	613934
KCCA-6 sol	#6 solid	10	125	613941
KCCA-6 str	#6 stranded	10	125	613958
KCCA-4 sol	#4 solid	10	125	613965
KCCA-4 str	#4 stranded	10	125	613972
KCCA-2 str	#2 stranded	10	125	613989
KCCA-1/0	1/0	10	125	613996
KCCA-2/0	2/0	10	125	614009
KCCA-3/0	3/0	10	125	614016

# INSULATION PIERCING CONNECTORS



Galvan IPC Series connectors are an easy fit in copper-to-copper, copper-to-aluminum and aluminum-to-aluminum applications. Designed for splice or tap use, these units are not recommended for use with extra-flexible cables. The connectors are fully insulated and safe to install without special tools. IPC connectors eliminate time spent on wire stripping, taping and covers.

## Insulation Piercing Connectors-IPC

- Wire range: #14 AWG to 750 MCM.
- Versatile and reliable.
- Use only with insulated conductors.
- Installs without tape, stripping or cover.
- Easy one-person installation.
- UL 486B listed .
- Rated: 600 volts, 90° C.



E155274



Catalog Number	Conductor Range		No. Of Bolts	Pieces Per Carton	Weight Per 100
	Main AWG	Tap AWG			
IPC-1/0-2	1/0-8	2-10	1	6	30
IPC-1/0-1/0	1/0-8	1/0-8	1	6	30
IPC-2/0-10	2/0-4	10-14	1	6	23
IPC-4/0-2	4/0-3	2-10	1	6	26
IPC-4/0-2/0	4/0-2	2/0-6	1	4	41
IPC-4/0-4/0	4/0-2	4/0-4	1	4	43
IPC-350-350	350-1/0	350-1/0	2	2	111
IPC-500-4/0	500-2/0	4/0-4	2	2	116
IPC-500-350	500-4/0	350-1/0	2	2	111
IPC-750-500	750-250	500-250	2	2	166



# SPLIT BOLTS

## Type 'K' Copper Split Bolts

- For copper to copper connections.
- Bolt and nut of high strength corrosion resistant bronze alloy.
- Tested and listed to UL 486A requirements.



Catalog Number	Range of Equal Main & Tap Conductors	Pcs. Per Ctn.	Wt. Per 100	Min Tap With One Max. Main	NAED UPC No. 632591-
K-10	10 Str. - 12 Sol.	100	2	14 Sol.	71322-1
K-8	8 Str. - 10 Sol.	100	3	14 Sol.	71335-1
K-6*	6 Sol. - 8 Sol.	100	5.5	14 Sol.	71333-7
K-4	4 Sol. - 8 Sol.	100	7	14 Sol.	71330-6
K-1	2 Str. - 6 Sol.	100	15	14 Sol.	71320-7
K-1/0	1/0 Str. - 4 Sol.	50	19	14 Sol.	71321-4
K-2/0	2/0 Str. - 2 Sol.	25	30	14 Sol.	71325-2
K-3/0	3/0 Str. - 2 Sol.	25	34	14 Sol.	71328-3
K-250	250 Kcmil. - 1 Str.	25	35	8 Sol.	71326-9
K-350	350 - 250 Kcmil.	12	77	1/0 Str.	71329-0
K-500	500 - 400 Kcmil.	12	90	2/0 Str.	71332-0
K-750	750 - 600 Kcmil.	6	195	4/0 Str.	71334-4
K-1000	1000 - 800 Kcmil	6	280	4/0 Str.	71323-8

**Notes:**

\*RUS Listed

UL Listed and CSA Certified for COPPER conductor only.

## Three Wire Split Bolts

Catalog Number	Range of Equal Main & Tap Conductors	Pcs. Per Ctn.	Wt. Per 100	Min Tap With One Max. Main	NAED UPC No. 632591-
K-2/3	#6 Sol. - 2 Solid	100	10.0	14 Sol.	61318-7
K-4/3	#8 Sol. - 4 Solid	100	7.5	14 Sol.	61319-4
K-6/3	#8 Sol. - 6 Solid	100	6.0	14 Sol.	61320-0

## Type 'S' Copper Split Bolts - Tin Plated with Spacer

- For use on copper, aluminum, and ACSR conductors.
- Bolt and pressure bar of copper alloy completely tin plated.
- Oxide inhibitor recommended when used on aluminum conductor.
- Tin plated, high strength copper alloy split bolt with spacer separates dissimilar conductors which allow you to connect: copper to copper; copper to aluminum; aluminum to aluminum.

Catalog Number	Range of Equal Main & Tap Conductors	Pcs. Per Ctn.	Wt. Per 100	Min Tap With One Max. Main	NAED UPC No. 632591-
S-6	6 Sol. - 12 Sol.	100	8	12 Sol.	71518-8
S-4	4 Sol. - 10 Sol.	100	11	12 Sol.	71515-7
S-2	2 Sol. - 8 Sol.	100	15	8 Sol.	71510-2
S-1	1 Str. - 8 Sol.	100	18	8 Sol.	71507-2
S-1/0	1/0 Str. - 6 Sol.	50	26	6 Sol.	71508-9
S-2/0	2/0 Str. - 6 Str.	25	39	6 Sol.	71511-9
S-3/0	3/0 Str. - 4 Sol.	25	45	4 Sol.	71513-3
S-250	250 Kcmil. - 2/0 Str.	25	59	4 Sol.	61285-2
S-350	350 Kcmil. - 1/0 Str.	12	86	2 Sol.	71514-0
S-500	500 Kcmil. - 1/0 Str.	12	105	1/0 Str.	71517-1



Copper only





**Dual-Rated Aluminum Split Bolt Connectors**

- For aluminum to aluminum, copper to aluminum and copper to copper.
- GALVAN aluminum split bolts made from high strength heat treated aluminum alloy that is highly resistant to corrosion.
- The design provides, under torque, high contact pressure between conductors.
- Electro-tin plated copper alloy bolt, nut, spacer, and pressure bar.
- Meets requirements of the UL486B Standard.

Catalog Number	Range of Equal Main & Tap Conductors	Pcs. Per Ctn.	Wt. Per 100	Min. Tap With One Max. Main	NAED UPC No. 632591-
A-6	6 Str. - 10 Str.	100	6	10 Sol.	70860-9
A-4	4 Str. - 10 Str.	100	6	10 Sol.	70857-9
A-2	2 Str. - 8 Str.	100	9	8 Sol.	70853-1
A-1/0	1/0-4 Str.	50	11	4 Sol.	70852-4
A-2/0	2/0-4 Str.	25	17	4 Sol.	70854-8
A-4/0	4/0-2 Str.	30	25	2 Sol.	70858-6
A-350	350 Kcmil - 2/0 Str.	20	45	2 Str.	70856-2
A-500	500 Kcmil - 3/0 Str.	20	60	2 Str.	70859-3



E9498



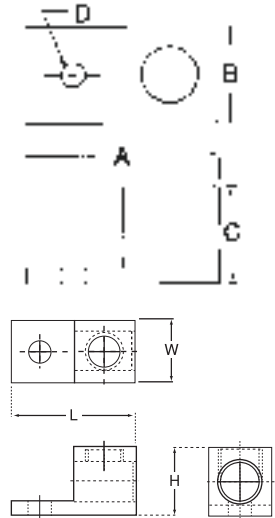
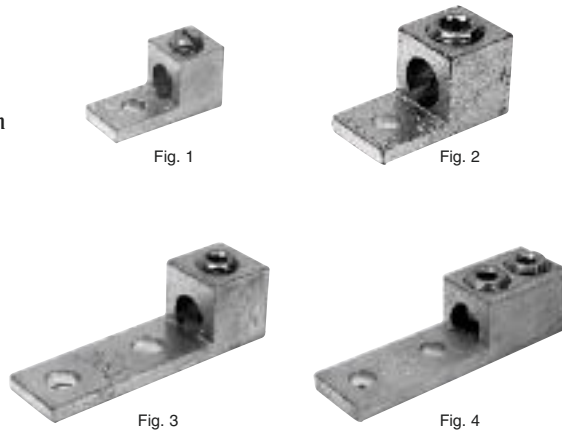


# GENERAL PURPOSE MECHANICAL CONNECTORS

## Dual-Rated Solderless Connectors

For use with both aluminum and copper conductors.

- GALVAN aluminum dual-rated connectors are manufactured from high strength 6061-T6 aluminum alloy to insure both maximum strength and conductivity.
- They are dual-rated for both copper and aluminum conductors and are electro-tin plated to provide low contact resistance and protection against corrosion.
- Assembly can be made with only a screwdriver or allen wrench and the connectors are re-useable.



E26130



Catalog Number	Discontinued Catalog Number	Fig. No.	Cond. Range	Pcs. Per Ctn.	Wt. Per 100	Dimensions				NAED UPC No. 632591-
						A	B	C	D	
LA-6	AB-50	1	6-14	100	1.5	1.06	0.50	0.50	0.27	71403-7
LA-2	AB-70	1	2-14	100	2	1.06	0.50	0.56	0.27	71393-1
LA-1/0	AB-112	1	1/0-14	50	4	1.47	0.63	0.78	0.27	71386-3
LA-2/0	AB-125	2	2/0-14	50	5	1.47	0.63	0.78	0.27	71394-8
LA-250	AB-250	2	250-6	25	14	2.00	1.00	1.13	0.33	71395-5
LA-300	AB-300	2	300-6	25	14	2.00	1.00	1.13	0.33	71397-9
LA-350	AB-350	2	350-6	25	20	2.25	1.13	1.25	0.41	71399-3
LA-500	AB-500	2	500-4	12	39	2.82	1.50	1.56	0.41	71402-0
LA-600	AB-600	2	600-2	12	45	2.82	1.50	1.56	0.41	71406-8
LA-800	-	2	800-300	3	55	3.50	1.75	1.94	0.66	71408-2
LA-1000	AB-1000	2	1000-500	3	65	3.50	1.75	1.94	0.66	71610-9
L1M2-350*	A1B2-350	3	350-6	6	25	4.25	1.25	1.38	0.53	71341-2
L1M2-600*	A1B2-600	3	600-2	3	50	4.69	1.50	1.50	0.53	71342-9
L1D2-350*	A1B2-350-2	4	350-6	3	35	5.31	1.50	1.50	0.53	71338-2
L1D2-600*	A1B2-600-2	4	600-2	3	50	5.31	1.50	1.50	0.53	71339-9
L1D2-800*	-	4	800-300	3	100	6.18	1.88	1.88	0.53	71340-5
L1D2-1000*	A1B2-1000-2	4	1000-500	3	105	6.18	1.88	1.88	0.53	71336-8

**Notes:**

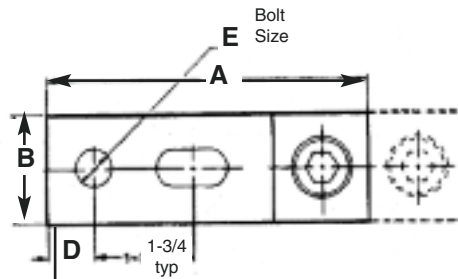
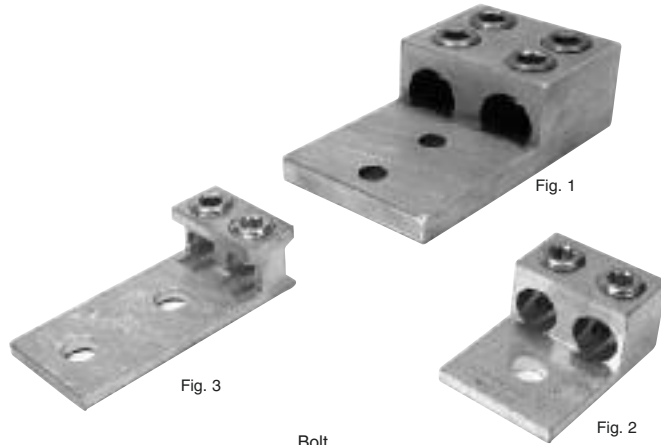
\*NEMA Hole Spacing of 1.75"



## Dual-Rated Solderless Connectors

For use with both aluminum and copper conductors.

- GALVAN aluminum dual-rated connectors are manufactured from high strength 6061-T6 aluminum alloy to insure both maximum strength and conductivity.
- They are dual-rated for both copper and aluminum conductors and are electro-tin plated to provide low contact resistance and protection against corrosion.
- Assembly can be made with only a screwdriver or allen wrench and the connectors are re-useable.



E26130



Catalog Number	Discontinued Catalog Number	Fig. No.	Cond. Range	Pcs. Per Ctn.	Wt. Per 100	Dimensions					NAED UPC No. 632591-
						A	B	C	D	E	
DLA-1/0	DLA-112	2	1/0-14	12	8	1.47	1.13	0.78	0.28	0.27	71246-0
DLA-2/0	DLA-125	1	2/0-14	12	9	1.47	1.25	0.79	0.28	0.27	71248-4
DLA-250	2AB-250	2	250-6	6	25	2.56	1.63	1.19	0.41	0.41	71249-1
DLA-350	2AB-350	2	350-6	6	30	2.88	1.94	1.25	0.56	0.53	71250-7
DLA-600	2AB-600	2	600-2	3	50	3.19	2.41	1.56	0.56	0.53	71251-4
DLA-800	-	2	800-300	3	110	3.50	3.50	1.94	0.56	0.66	71252-1
DLA-1000	2AB-1000	2	1000-500	3	110	3.50	3.50	1.94	0.56	0.66	71245-3
L2M2-350	2AB2-350	3	350-6	3	50	4.25	1.92	1.18	0.63	0.56	71347-4
L2M2-500	2AB2-500	3	500-2	3	97	4.59	2.40	1.56	0.63	0.56	61269-2
L2M2-600	2AB2-600	3	600-2	3	97	4.59	2.40	1.56	0.63	0.56	61270-8
L2M2-1000	2AB2-1000	3	1000-500	3	134	4.94	3.50	1.94	0.63	0.66	61272-2
L2D2-350*	A2B2-350	1	350-6	3	85	4.25	2.31	1.38	0.56	0.56	71344-3
L2D2-600*	A2B2-600	1	600-2	3	134	5.31	2.75	1.50	0.56	0.56	71345-0
L2D2-800*	-	1	800-300	3	200	6.19	3.50	1.88	0.56	0.56	71346-7
L2D2-1000*	-	1	1000-500	3	210	6.19	3.50	1.88	0.56	0.56	71343-6

**Notes:**

\*NEMA Hole Spacing of 1.75" center.





# GENERAL PURPOSE MECHANICAL CONNECTORS

## Dual-Rated Solderless Connectors

For use with both aluminum and copper conductors.

- GALVAN aluminum dual-rated connectors are manufactured from high strength 6061-T6 aluminum alloy to insure both maximum strength and conductivity.
- They are dual-rated for both copper and aluminum conductors and are electro-tin plated to provide low contact resistance and protection against corrosion.
- Assembly can be made with only a screwdriver or allen wrench and the connectors are re-useable.

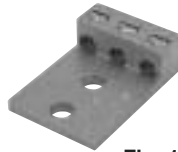


Fig. 1

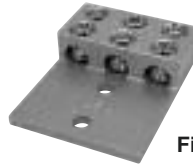


Fig. 2



Fig. 3

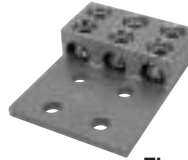


Fig. 4

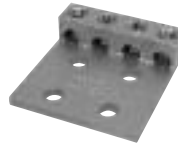


Fig. 5

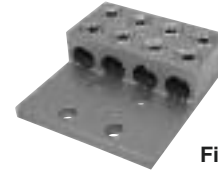
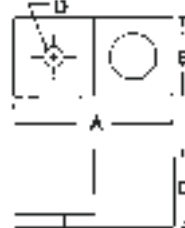


Fig. 6



E26130



Catalog Number	Discontinued Catalog Number	Fig. No.	Cond. Range	Pcs. Per Ctn.	Wt. Per 100	Dimensions				NAED UPC No. 632591-
						A	B	C	D	
L3M2-1/0	3AB2-112	1	1/0-14	6	27	2.91	2.00	0.88	0.53	71354-2
L3M2-3/0	-	1	3/0-6	3	36	4.00	2.81	1.19	0.53	71356-6
L3M2-250	3AB2-250	1	250-6	3	52	4.00	3.00	1.19	0.53	71355-9
L3M2-350	3AB2-350	1	350-6	1	68	4.25	3.50	1.38	0.53	71357-3
L3M2-500	3AB2-500	1	500-4	1	127	4.25	3.75	1.53	0.53	71358-0
L3D2-600	A3B2-600	2	600-2	1	201	5.31	3.88	1.50	0.53	71349-8
L3D2-800	-	2	800-300	1	211	6.19	4.94	1.88	0.53	71350-4
L3D2-1000	-	2	1000-350	1	312	6.19	5.19	1.88	0.53	71348-1
L3M4-1/0	-	3	1/0-14	6	27	2.59	2.00	0.88	0.53	71359-7
L3M4-3/0	-	3	3/0-6	6	36	4.00	2.81	1.19	0.53	71362-7
L3M4-250	3AB4-250	3	250-6	3	50	4.00	3.00	1.19	0.53	71361-0
L3M4-350	3AB4-350	3	350-6	1	68	4.25	3.50	1.38	0.53	71363-4
L3M4-500	3AB4-500	3	500-4	1	110	4.25	3.75	1.53	0.53	71364-1
L3D4-600	A3B4-600	4	600-2	1	201	5.31	3.88	1.50	0.53	71352-8
L3D4-800	-	4	800-300	1	211	6.19	4.94	1.88	0.53	71353-5
L3D4-1000	A3B4-1000	4	1000-500	1	309	6.19	5.31	1.88	0.53	71351-1
L4M4-250	4AB4-250	5	250-6	1	67	4.00	4.06	1.19	0.53	71372-6
L4M4-350	4AB4-350	5	350-6	1	91	4.25	4.75	1.38	0.53	71373-3
L4M4-500	-	5	500-4	1	268	4.25	5.00	1.53	0.53	-
L4D4-600	A4B4-600	6	600-2	1	281	6.19	5.28	1.50	0.53	71366-5
L4D4-800	-	6	800-300	1	284	6.19	6.63	1.88	0.53	71367-2
L4D4-1000	A4B4-1000	6	1000-500	1	412	6.19	7.16	1.88	0.53	71365-8

**Notes:**

\*NEMA Drilling 1 3/4" centers

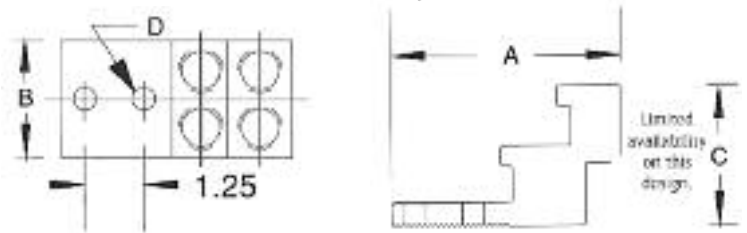
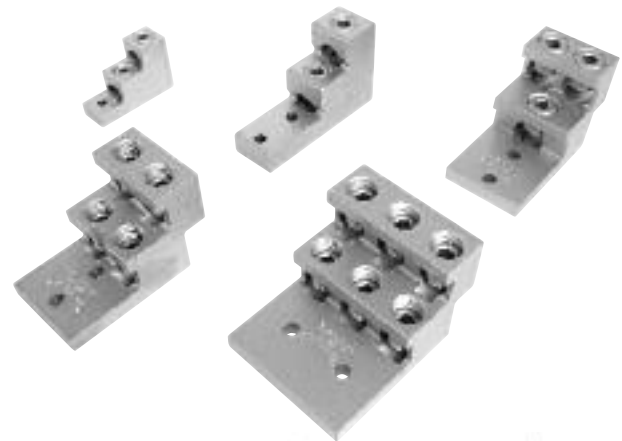


## Aluminum Dual-Rated Solderless Connectors

For use with both aluminum and copper conductors

GALVAN aluminum dual-rated solderless connectors are manufactured from high strength 6061-T6 aluminum alloy to insure both maximum strength and conductivity.

- The screws used to clamp the conductors are designed to extend beyond the barrel sides of the connector to allow a better, more secure compression of the conductor. This design spreads the conductor strands to help dissipate heat, and improve its pull out safety features and capabilities.
- The design of the wire way provides optimum transfer of current, creating a straight line flow through the connector for the least possible path of electrical resistance, plus a positive wire stop is provided.



E26130



Catalog Number	Discontinued Catalog Number	Fig. No.	Cond. Range	Pcs. Per Ctn.	Wt. Per 100	Dimensions				NAED UPC No. 632591-
						A	B	C	D	
PV2-300		1	300-6	3	30	3.00	1.00	2.00	0.31	71496-9
2ABV-500	PV2-500	2	500-4	2	90	4.90	1.50	3.00	0.41	71497-6
2ABV-600	PV2-600	2	600-2	2	90	4.90	1.50	3.00	0.41	71498-3
2ABV-750	PV2-750	2	750-1/0	2	90	4.90	1.56	3.00	0.41	71499-0
3ABV-500	PV3-500*	3	500-4	2	150	4.90	2.50	3.00	0.41	71500-3
3ABV-600	PV3-600	3	600-2	2	150	4.90	2.50	3.00	0.41	71501-0
3ABV-750	PV3-750	3	750-1/0	2	150	4.90	2.84	3.00	0.41	71502-7
4ABV-500	PV4-500	4	500-4	2	159	4.90	2.50	3.00	0.41	71503-4
4ABV-600	PV4-600	4	600-2	2	159	4.90	2.50	3.00	0.41	71504-1
4ABV-750	PV4-750	4	750-1/0	2	159	4.90	2.84	3.00	0.41	71505-8
6ABV-500	PV6-500	5	500-4	2	205	4.90	3.94	3.00	0.41	61201-2
6ABV-750	PV6-750	5	750-4	2	205	4.90	3.94	3.00	0.41	71506-5



## Type "SR" Aluminum Splicers/Reducers

### Dual-Rated Solderless Connectors

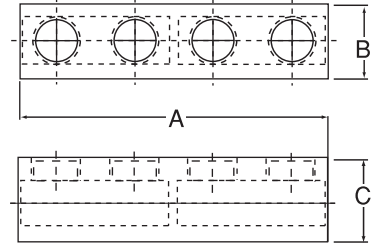
- For splicing copper to copper, copper to aluminum, and aluminum to aluminum conductors.
- Solid center barrier wall prevents contact between conductors.



Fig. 1



Fig. 2



E26130



Catalog Number	Fig. No.	Cond. Range	Pcs. Per Ctn.	Wt. Per 100	Dimensions			NAED UPC No. 632591-
					A	B	C	
SR-2	1	2-14	10	10	1.38	0.50	0.56	71579-9
SR-0	1	1/0-14	10	12	1.91	0.75	0.75	71577-5
SR-250	2	250-6	10	47	3.94	1.00	1.13	71580-5
SR-350	2	350-6	10	50	4.19	1.13	1.19	71582-9
SR-500	2	500-3/0	3	64	5.00	1.38	1.50	71583-6
SR-750	2	750-250	2	90	6.25	1.63	1.75	71584-3



## LI-Ground Clamps: Dual-Rated Solderless Connectors

- Made of 6061-T6 aluminum alloy.
- Tin-plated steel blade type set screw.
- Electro tin plated body to offer low contact resistance and corrosion protection.
- For use with both aluminum and copper conductors.
- Designed for use on conduit grounding bushings.
- Open faced design allows installer to quickly lay-in the grounding conductor as a jumper to multiple conduits with no break in ground conductor.
- Rated for 600v.
- Not approved for direct burial.



E26130



Catalog Number	Fig. No.	Cond. Range	Pcs. Per Ctn.	Wt. Per 100	Dimensions			Height	Tang Thickness	NAED UPC No. 632591-
					A	B	C			
LI50-S	1	4-14	100	2	1.08	0.38	0.26	0.75	0.15	71415-0
LI112-S	1	1/0-14	50	4	1.50	0.60	0.26	1.17	0.22	71410-5
LI200-S	2	3/0-6	50	14	2.00	0.80	0.41	1.56	0.30	71412-9
LI252-S	2	250-6	25	16	2.20	0.80	0.41	1.79	0.30	71414-3

## Direct Burial Copper Lay-In Lug

- Made of copper alloy.
- For copper conductors.
- Stainless steel blade-type set screw.
- Open face design.
- Perfect for swimming pool grounding.
- Rated for 600v.
- Listed for direct burial in earth or concrete.
- Plated = tin plated.



E1981080



Catalog Number	Conductor Range	Dimensions (in.)			Height	Tang Thickness	Pcs. Per Ctn.	Wt. Per 100	NAED UPC No. 632591-
		A	B	C					
LIC-50S	4-14	.97	.38	.26	.26	.15	100	2	61466-5
LIC-50S Plated	4-14	.97	.38	.26	.26	.15	100	2	61497-9



## MULTI-TAP CONNECTORS

### PRE-INSULATED MULTI-TAP CONNECTORS



E9498

Galvan UV-rated pre-insulated multi-tap connectors are real timesavers for installers who work with line splicing, reducers and tap applications. Available in single-sided, double-sided and splice versions, the connectors don't require taping during installations. The PVC-covered connectors are enclosed in protective black Plastisol and filled with Penetrox™ oxide inhibitors to ensure greater contact resistance to moisture, chemicals and abrasion. The connectors' solid end caps protect against contamination.



ITO (offset)



IPL (one-sided)

### Dual-Rated Multi-Tap Connectors

- Use with copper or aluminum conductors.
- Tape-free installs save time.
- 2 to 8 taps per connector.
- Reduces inventory size and costs.
- UL listed up to 600 MCM.
- CSA-certified to 600 volts, 90° C.
- Wire strip lengths: 5/8-inch to 1-1/8-inch.



IPLD (two-sided)



ISR (splice/reducer)



## PRE-INSULATED MULTI-TAP CONNECTORS



E9498

Catalog Number	Num. of Ports	Conductor Range (AWG/kcmil)	Dimensions (Inches)			Hex Key (Torque) (in.-lbs.)	Wire Strip Length(in.)	UPC
			L	W	H			
ITO-4	2	#14-4	1.16	1.50	1.25	1/8 (45)	5/8	632591-61449-8
ITO-2/0	2	#14-2/0	1.52	1.56	1.38	3/16 (120)	11/16	632591-61450-4
ITO-250	2	#10-250	2.03	2.64	2.13	5/16 (275)	1	632591-61451-1
ISR-2	2	#14-2	2.38	0.75	1.22	5/32 (45)	3/4	632591-61409-2
ISR-1/0	2	#14-1/0	2.91	0.91	1.38	3/16 (120)	1	632591-61410-8
ISR-250	2	#10-250	4.01	1.19	2.10	5/16 (120)	1-3/16	632591-61411-5
ISR-350	2	#10-350	4.63	1.34	2.35	5/16 (275)	1-3/8	632591-61412-2
ISR-500	2	#6-500	5.00	1.62	2.62	3/8 (375)	1-1/2	632591-61413-9
IPL4-2	2	#14-4	1.16	1.16	1.25	1/8 (45)	5/8	632591-61414-6
IPL4-3	3	#14-4	1.59	1.25	1.25	1/8 (45)	5/8	632591-61415-3
IPL4-4	4	#14-4	2.03	1.25	1.25	1/8 (45)	5/8	632591-61416-0
IPL2/0-2	2	#14-2/0	1.52	1.40	1.38	3/16 (120)	11/16	632591-61417-7
IPL2/0-3	3	#14-2/0	2.19	1.31	1.38	3/16 (120)	11/16	632591-61418-4
IPL250-2	2	#10-250	2.03	2.07	2.13	5/16 (275)	1	632591-61420-7
IPL250-3	3	#10-250	2.22	2.32	2.50	5/16 (275)	1-1/8	632591-61421-4
IPL600-2	2	#4-600	2.72	2.38	2.75	3/8 (375)	1-1/8	632591-61423-8
IPL250-3	3	#10-250	2.97	2.07	2.13	5/16 (275)	1	632591-61421-4
IPLD4-3	3	#14-4	1.59	1.50	1.25	1/8 (45)	5/8	632591-61425-2
IPLD4-4	4	#14-4	2.03	1.50	1.25	1/8 (45)	5/8	632591-61426-9
IPLD2/0-2	2	#14-2/0	1.52	1.56	1.25	3/16 (120)	11/16	632591-61427-6
IPLD2/0-3	3	#14-2/0	2.19	1.56	1.25	3/16 (120)	11/16	632591-61428-3
IPLD2/0-4	4	#14-2/0	2.86	1.56	1.25	3/16 (120)	11/16	632591-61429-0
IPLD2/0-6	6	#14-2/0	4.20	1.56	1.25	3/16 (120)	11/16	632591-61430-6
IPLD250-2	2	#10-250	2.03	2.64	2.13	5/16 (275)	1	632591-61431-3
IPLD250-3	3	#10-250	2.97	2.64	2.13	5/16 (275)	1	632591-61432-0
IPLD250-4	4	#10-250	3.91	2.64	2.13	5/16 (275)	1	632591-61433-7
IPLD250-6	6	#10-250	5.78	2.64	2.13	5/16 (275)	1	632591-61434-4
IPLD350-2	2	#10-350	2.22	3.00	2.50	5/16 (375)	1-1/8	632591-61436-8
IPLD350-3	3	#10-350	3.13	3.00	2.50	5/16 (375)	1-1/8	632591-61437-5
IPLD350-4	4	#10-350	4.04	3.00	2.50	5/16 (375)	1-1/8	632591-61438-2
IPLD350-6	6	#10-350	5.86	3.00	2.50	5/16 (375)	1-1/8	632591-61439-9
IPLD350-8	8	#10-350	7.68	3.00	2.50	5/16 (375)	1-1/8	632591-61441-2
IPLD600-2	2	#4-600	2.56	3.00	2.75	3/8 (375)	1-1/8	632591-61443-6
IPLD600-3	3	#4-600	3.77	3.00	2.75	3/8 (375)	1-1/8	632591-61444-3
IPLD600-4	4	#4-600	4.97	3.00	2.75	3/8 (375)	1-1/8	632591-61445-0
IPLD600-5	5	#4-600	6.17	3.00	2.75	3/8 (375)	1-1/8	632591-61446-7
IPLD600-6	6	#4-600	7.37	3.00	2.75	3/8 (375)	1-1/8	632591-61447-4
IPLD600-8	8	#4-600	9.78	3.00	2.75	3/8 (375)	1-1/8	632591-61448-1



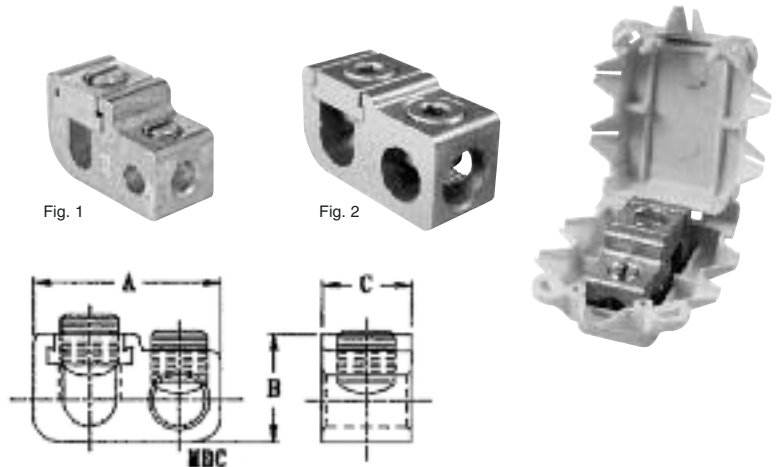


## Type GGPT : Dual-Rated Solderless Connectors

For use with both aluminum and copper conductors.

UL-486B Listed AL9CU (90°C Rated)

- GALVAN Parallel and Tee Taps are manufactured from high strength 6061-T6 aluminum alloy to insure both maximum strength and conductivity.
- They are dual-rated for both copper and aluminum conductors and are electro-tin plated to provide low contact resistance and protection against corrosion.
- Only a screwdriver or allen wrench is needed for assembly.



Catalog Number	Fig. No.	Cond. Range		Pcs. Per Ctn.	Wt. Per 100	Dimensions			NAED UPC No. 632591-
		Main	Tap			A	B	C	
GGPT-2	1	2-12	4-14	50	4	0.88	0.63	1.39	71614-7
GGPT-1/0	2	1/0-2	1/0-14	25	16	1.00	0.75	1.75	71615-4
GGPT-250-0	2	250-1/0	1/0-14	25	16	1.31	1.06	2.03	71616-1
GGPT-250-250	2	250-1/0	250-6	25	20	1.31	1.06	2.28	71617-8
GGPT-350	2	350-4/0	350-6	12	20	1.44	1.25	2.56	71618-5
GGPT-500	2	500-350	500-2	12	37	1.75	1.38	3.13	71619-2
GGPT-750-500	2	750-500	500-2	6	54	2.00	1.50	3.38	71620-8

## Covers for GGPT

Cover Catalog Number	Use with Connector	Pcs. Per Ctn.	Wt. Per 100	Dimensions			NAED UPC No. 632591-
				A	B	C	
TC-2	GGPT-2	12	2.4	2.25	1.37	1.11	71589-8
TC-1/0	GGPT-1/0	12	4	2.61	2.17	1.26	71588-1
TC-250	GGPT-250	6	7.4	3.44	3.18	1.63	71590-4
TC-350	GGPT-350	6	8.4	3.76	3.29	1.76	71591-1
TC-500	GGPT-500	3	12	4.39	3.34	2.12	71592-8
TC-750	GGPT-750	3	14	4.55	3.45	2.34	71593-5





# DUAL-RATED COMPRESSION CONNECTORS

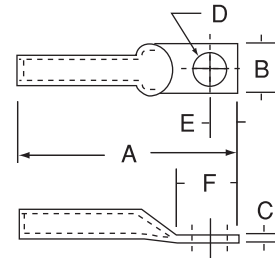
## Dual-Rated Compression Connectors

For use with both aluminum and copper conductors.

- GALVAN aluminum compression connectors and splices are manufactured from high conductivity 1350 alloy aluminum seamless tubing.
- Tin plated and prefilled with oxide inhibitor.



E9999



Catalog Number	Die Color	Cond.	Pcs. Per Ctn.	Wt. Per 100	Dimensions						NAED UPC No. 632591-
					A	B	C	D	E	F	
CLA8-25	Blue	8	20	0.8	1.81	0.63	0.09	0.28	0.31	0.81	71189-0
CLA6-25	Gray	6	20	0.9	1.93	0.53	0.12	0.28	0.31	0.75	71184-5
CLA6-31	Gray	6	20	0.9	1.93	0.53	0.12	0.34	0.38	0.75	71185-2
CLA6-38	Gray	6	20	0.9	1.93	0.53	0.12	0.41	0.38	0.75	71186-9
CLA4-25	Green	4	20	1.7	2.31	0.65	0.15	0.28	0.38	0.88	71173-9
CLA4-31	Green	4	20	1.7	2.31	0.65	0.15	0.34	0.38	0.88	71174-6
CLA4-38	Green	4	20	1.7	2.31	0.65	0.15	0.41	0.38	0.88	71175-3
CLA2-25	Pink	2	20	2.6	2.50	0.68	0.17	0.28	0.38	0.88	71157-9
CLA2-31	Pink	2	20	2.6	2.50	0.68	0.17	0.34	0.38	0.88	71158-6
CLA1-25	Gold	1	10	3.1	2.50	0.78	0.17	0.28	0.38	0.88	71150-0
CLA1-31	Gold	1	10	3.1	2.50	0.78	0.17	0.34	0.38	0.88	71151-7
CLA1-38	Gold	1	10	3.1	2.50	0.78	0.17	0.41	0.38	0.88	71152-4
CLA1/0-25	Tan	1/0	10	4.2	2.81	0.84	0.20	0.28	0.50	0.93	71153-1
CLA1/0-31	Tan	1/0	10	4.2	2.81	0.84	0.20	0.34	0.50	0.93	71154-8
CLA1/0-38	Tan	1/0	10	4.2	2.81	0.84	0.20	0.41	0.50	0.93	71155-5
CLA1/0-50	Tan	1/0	10	4.2	2.81	0.84	0.20	0.41	0.50	0.93	71156-2
CLA2/0-38	Olive	2/0	10	5.5	2.81	0.93	0.22	0.41	0.50	1.12	71163-0
CLA3/0-31	Ruby	3/0	10	7.4	3.00	1.06	0.24	0.34	0.50	1.12	71167-8
CLA3/0-38	Ruby	3/0	10	7.4	3.00	1.06	0.24	0.41	0.50	1.12	71168-5
CLA4/0-38	White	4/0	10	11.5	3.43	1.18	0.29	0.41	0.56	1.31	71178-4
CLA4/0-50	White	4/0	10	11.5	3.43	1.18	0.29	0.41	0.56	1.31	71179-1
CLA250-50	Red	250	5	17	3.50	1.43	0.32	0.56	0.63	1.31	71165-4
CLA300-38	Blue	300	5	20	4.00	1.43	0.35	0.41	0.63	1.50	71169-2
CLA300-50	Blue	300	5	20	4.00	1.43	0.35	0.56	0.63	1.50	71170-8
CLA350-50	Brown	350	3	27	4.25	1.50	0.38	0.56	0.69	1.50	71172-2
CLA400-50	Green	400	3	33	4.68	1.50	0.42	0.56	0.69	1.50	71181-4
CLA500-50	Pink	500	3	39	4.75	1.78	0.47	0.56	0.75	1.50	71183-8
CLA600-62	Black	600	3	53	5.12	1.96	0.51	0.69	0.75	1.87	71187-6
CLA750-62	Yellow	750	3	64	6.12	2.18	0.55	0.69	0.94	2.00	71188-3

### Notes

UL Listed and CSA Certified for 600 Volts when installed with approved tools and dies. Can be used for high voltage applications up to 35 KV provided proper high voltage installation and insulation techniques are employed.

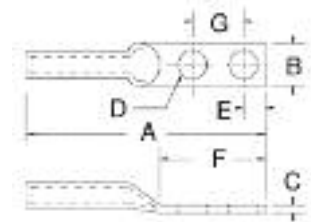
# DUAL-RATED COMPRESSION CONNECTORS



## Dual-Rated Compression Connectors - 2 Hole Long Barrel

For use with both aluminum and copper conductors.

- GALVAN aluminum compression connectors and splices are manufactured from high strength 1350 alloy aluminum seamless tubing.
- Tin plated and prefilled with oxide inhibitor.



Catalog Number	Die Color	Cond.	Pcs. Per Ctn.	Wt. Per 100	Dimensions							NAED UPC No. 632591-
					A	B	C	D	E	F	G	
2CLA1/0-50	Tan	1/0	10	7.5	3.50	0.84	0.20	0.56	0.50	1.87	1.00	-
2CLA2/0-50	Olive	2/0	10	12	4.80	0.93	0.22	0.56	0.63	3.12	1.75	70791-6
2CLA3/0-50	Ruby	3/0	10	16	5.00	1.06	0.24	0.56	0.63	3.12	1.75	70793-0
2CLA4/0-50	White	4/0	10	20	5.25	1.18	0.29	0.56	0.63	3.12	1.75	70797-8
2CLA250-50	Red	250	5	25	5.31	1.28	0.32	0.56	0.63	3.12	1.75	70792-3
2CLA300-50	Blue	300	3	30	5.50	1.40	0.35	0.56	0.63	3.12	1.75	70794-7
2CLA350-50	Brown	350	3	35	5.87	1.50	0.38	0.56	0.63	3.12	1.75	70795-4
2CLA400-50	Green	400	3	52	6.43	1.62	0.42	0.56	0.63	3.12	1.75	70798-5
2CLA500-50	Pink	500	3	61	6.50	1.78	0.47	0.56	0.63	3.12	1.75	70800-5
2CLA600-50	Black	600	3	86	6.75	1.96	0.51	0.56	0.63	3.12	1.75	70801-2
2CLA750-50	Yellow	750	3	96	7.37	2.18	0.55	0.56	0.63	3.12	1.75	70802-9
2CLA1000-50	--	1000	1	107	7.78	2.50	0.50	0.56	0.75	3.00	1.75	61274-6

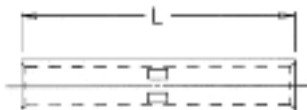
### Notes

UL Listed and CSA Certified for 600 Volts when installed with approved tools and dies. Can be used for high voltage applications up to 35 KV provided proper high voltage installation and insulation techniques are employed.

## Dual-Rated Compression Splices

### Dual-Rated Connectors

- For use with both aluminum and copper conductors.
- GALVAN aluminum compression connectors and splices are manufactured from high Conductivity 1350 alloy aluminum seamless tubing.
- Tin plated and prefilled with oxide inhibitor.



Catalog Number	Die Color	Cond.	Pcs. Per Ctn.	Wt. Per 100	Length	NAED UPC No. 632591-
SA-8	BLUE	8	20	1	1.50	71536-2
SA-6	GRAY	6	20	1	1.63	71533-1
SA-4	GREEN	4	20	1.8	2.00	71529-4
SA-2	PINK	2	20	3.5	2.38	71523-2
SA-1	GOLD	1	10	3.5	2.38	71521-8
SA-1/0	TAN	1/0	10	4	2.50	71522-5
SA-2/0	OLIVE	2/0	10	5.5	2.63	71524-9
SA-3/0	RUBY	3/0	10	7	2.88	71526-3
SA-4/0	WHITE	4/0	10	13	3.13	71530-0
SA-250	RED	250	5	17	3.25	71525-6
SA-300	BLUE	300	5	20	3.25	71527-0
SA-350	BROWN	350	3	30	3.88	71528-7
SA-400	GREEN	400	3	35	4.88	71531-7
SA-500	PINK	500	3	42	5.00	71532-4
SA-600	BLACK	600	3	42	5.13	71534-8
SA-750	YELLOW	750	3	70	5.38	71535-5

### Notes

UL Listed and CSA Certified for 600 Volts 35 KV when installed with approved tools and dies. For applications greater than 2000 volts consult cable manufacturer for voltage stress relief instructions.

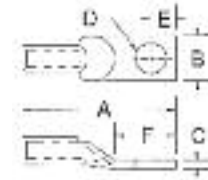


# SHORT BARREL COPPER COMPRESSION CONNECTORS

## One-Hole Short Barrel Copper

For use with copper conductors **only**.

- Specially designed for industrial and building applications.
- GALVAN compression connectors are manufactured from high strength pure electrolytic copper to insure both maximum strength and conductivity.
- All connectors are color coded for quick, easy identification with matching die.
- Tin-plated for corrosion resistance.
- Specially chamfered barrel for ease of installation.
- Can be used for high voltage application up to 35 kV provided proper high voltage insulation techniques are used.
- U.L. Listed for AWG conductor when installed with approved tools and dies.



Catalog Number	Die Color	Conductor	Pcs. Per Ctn.	Wt. Per 100	Dimensions						NAED UPC No. 632591-
					A	B	C	D	E	F	
CC8-19	Red	8 Str.	50	1.5	1.63	0.39	0.08	0.20	0.22	0.63	71051-0
CC8-25	Red	8 Str.	50	1.5	1.69	0.48	0.06	0.28	0.31	0.69	71052-7
CC8-31	Red	8 Str.	50	1.5	1.69	0.48	0.06	0.34	0.31	0.69	71053-4
CC6-19	Blue	6 Str.	50	1.8	1.69	0.39	0.08	0.20	0.22	0.63	71044-2
CC6-25	Blue	6 Str.	50	1.8	1.69	0.39	0.06	0.28	0.31	0.06	71045-9
CC6-31	Blue	6 Str.	50	1.8	1.75	0.50	0.06	0.34	0.31	0.69	71046-6
CC6-38	Blue	6 Str.	50	1.8	1.75	0.50	0.06	0.34	0.31	0.69	71047-3
CC4-25	Gray	4 Str.	50	2.1	1.76	0.52	0.09	0.28	0.34	0.69	71035-0
CC4-31	Gray	4 Str.	50	2.1	1.81	0.56	0.09	0.34	0.38	0.69	71036-7
CC4-38	Gray	4 Str.	50	2.1	1.81	0.56	0.08	0.20	0.38	0.75	71037-4
CC2-25	Brown	2 Str.	50	3.6	1.94	0.63	0.08	0.28	0.34	0.75	71020-6
CC2-31	Brown	2 Str.	50	3.6	1.94	0.63	0.10	0.34	0.38	0.81	71021-3
CC2-38	Brown	2 Str.	50	3.6	1.94	0.63	0.10	0.41	0.41	0.81	71022-0
CC1-25	Green	1 Str.	20	3.6	2.00	0.67	0.10	0.28	0.34	0.81	71012-1
CC1-31	Green	1 Str.	20	3.6	2.00	0.67	0.11	0.34	0.38	0.81	71013-8
CC1/0-25	Pink	1/0 Str.	10	4.3	2.06	0.73	0.11	0.28	0.34	0.81	71015-2
CC1/0-31	Pink	1/0 Str.	10	4.3	2.06	0.73	0.12	0.34	0.38	0.81	71016-9
CC1/0-38	Pink	1/0 Str.	10	4.3	2.06	0.73	0.12	0.41	0.41	0.81	71017-6
CC1/0-50	Pink	1/0 Str.	10	4.3	2.06	0.73	0.12	0.56	0.41	0.81	71018-3
CC2/0-38	Black	2/0 Str.	10	6.2	2.31	0.81	0.12	0.41	0.44	0.81	71023-7
CC2/0-50	Black	2/0 Str.	10	6.2	2.31	0.81	0.12	0.56	0.53	1.06	71024-4
CC3/0-38	Orange	3/0 Str.	10	7.6	2.50	0.94	0.12	0.41	0.44	0.81	71028-2
CC3/0-50	Orange	3/0 Str.	10	7.6	2.50	0.94	0.13	0.56	0.53	1.06	71029-9
CC4/0-38	Purple	4/0 Str.	10	7.7	2.53	1.06	0.13	0.41	0.44	0.81	71038-1
CC4/0-50	Purple	4/0 Str.	10	7.7	2.53	1.06	0.13	0.56	0.53	1.06	71039-8
CC250-38	Yellow	250 MCM	10	13	2.69	1.13	0.14	0.41	0.44	1.06	71025-1
CC250-50	Yellow	250 MCM	10	13	2.69	1.13	0.14	0.56	0.53	1.06	71026-8
CC300-50	White	300 MCM	10	14	2.75	1.25	0.16	0.56	0.53	1.13	71030-5
CC350-50	Red	350 MCM	10	19	2.88	1.31	0.17	0.56	0.53	1.13	71032-9
CC400-50	Blue	400 MCM	6	25	3.06	1.39	0.18	0.56	0.53	1.25	71040-4
CC500-50	Brown	500 MCM	6	40	3.31	1.56	0.21	0.56	0.53	1.25	71042-8
CC500-62	Brown	500 MCM	6	40	3.81	1.56	0.21	0.69	0.88	1.75	71043-5
CC600-62	Green	600 MCM	6	60	4.13	1.78	0.25	0.56	0.88	1.75	71048-0
CC700-62	Pink	700 MCM	6	70	4.44	1.81	0.25	0.69	0.88	1.88	71049-7
CC750-62	Black	750 MCM	6	82	4.44	1.91	0.27	0.69	0.88	1.88	71050-3
CC1000-75	White	1000 MCM	3	120	5.13	2.19	0.32	0.78	0.94	1.88	71019-0

Notes: \* Consult factory for availability of special mounting hole sizes.

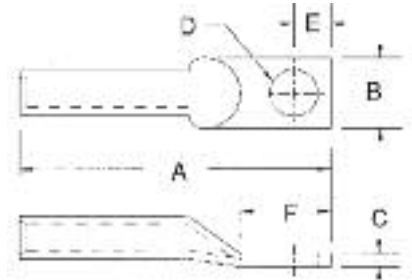
# LONG BARREL COPPER COMPRESSION CONNECTORS



## One-Hole Long Barrel Copper

For use with copper conductors **only**.

- Specially designed for industrial and building applications.
- **GALVAN** compression connectors are manufactured from high strength pure electrolytic copper to insure both maximum strength and conductivity.
- All connectors are color coded for quick, easy identification with matching die.
- Tin-plated for corrosion resistance.
- Specially chamfered barrel for ease of installation.
- Can be used for high voltage application up to 35 kV provided proper high voltage insulation techniques are used.
- U.L. Listed for AWG conductor when installed with approved tools and dies.



E9999



Catalog Number	Die Color	Conductor	Pcs. Per Ctn.	Wt. Per 100	Dimensions						NAED UPC No. 632591-
					A	B	C	D	E	F	
CCB8-25	Red	8 Str.	50	2	1.94	0.48	0.08	0.27	0.31	0.69	71073-2
CCB6-25	Blue	6 Str.	50	2.2	1.94	0.50	0.06	0.27	0.31	0.69	71069-5
CCB4-25	Gray	4 Str.	50	2.5	2.25	0.52	0.09	0.27	0.34	0.75	71064-0
CCB4-38	Gray	4 Str.	50	2.5	2.61	0.81	0.09	0.38	0.31	1.00	61208-1
CCB2-31	Brown	2 Str.	25	4.5	2.32	0.63	0.10	0.33	0.38	0.81	71057-2
CCB1-31	Green	1 Str.	10	5.5	2.63	0.67	0.11	0.33	0.38	0.81	71054-1
CCB1/0-38	Pink	1/0 Str.	10	6.0	2.88	0.74	0.12	0.41	0.41	1.06	71055-8
CCB2/0-38	Black	2/0 Str.	10	8.2	2.88	0.82	0.12	0.41	0.44	1.06	71058-9
CCB2/0-50	Black	2/0 Str.	10	8.2	2.88	0.82	0.12	0.41	0.44	1.06	71059-6
CCB3/0-50	Orange	3/0 Str.	10	9.5	3.50	0.94	0.13	0.54	0.53	1.06	71061-9
CCB4/0-50	Purple	4/0 Str.	10	13	3.53	1.06	0.14	0.54	0.53	1.06	71066-4
CCB250-50	Yellow	250 MCM	10	17	3.56	1.13	0.14	0.54	0.53	1.06	71060-2
CCB300-50	White	300 MCM	10	20	3.63	1.25	0.16	0.54	0.53	1.13	71062-6
CCB350-50	Red	350 MCM	10	26	3.75	1.31	0.17	0.54	0.53	1.13	71063-3
CCB400-50	Blue	400 MCM	6	33	3.88	1.41	0.18	0.54	0.53	1.25	71067-1
CCB500-50	Brown	500 MCM	6	50	4.44	1.56	0.21	0.54	0.53	1.25	71068-8
CCB600-62	Green	600 MCM	6	70	5.00	1.72	0.25	0.66	0.88	1.75	71071-8
CCB750-62	Black	750 MCM	6	96	5.87	1.91	0.27	0.66	0.88	1.86	71072-5
CCB1000-62	White	1000 MCM	3	132	6.25	2.19	0.32	0.66	0.88	2.13	71056-5

### Notes

\*Consult factory for availability of special mounting hole sizes.



# SHORT BARREL COPPER COMPRESSION CONNECTORS

## Two-Hole Short Barrel Copper

For use with copper conductors **only**.

- Specially designed for industrial and building applications.
- GALVAN compression connectors are manufactured from high strength pure electrolytic copper to insure both maximum strength and conductivity.
- All connectors are color coded for quick, easy identification with matching die.
- Tin-plated for corrosion resistance.
- Specially chamfered barrel for ease of installation.
- Can be used for high voltage application up to 35 kV provided proper high voltage insulation techniques are used.
- U.L. Listed for AWG conductor when installed with approved tools and dies.



Catalog Number	Die Color	Cond.	Pcs. Per Ctn.	Wt. Per 100	Dimensions							NAED UPC No. 632591-
					A	B	C	D	E	F	G	
CCL8-19	Red	8 Str.	50	2.8	1.91	0.41	0.06	0.20	0.31	1.13	0.63	71123-4
CCL6-25	Blue	6 Str.	50	3.6	1.97	0.41	0.09	0.25	0.25	1.13	0.63	71119-7
CCL4-25	Gray	4 Str.	50	4.4	2.03	0.50	0.09	0.25	0.25	1.13	0.63	71112-8
CCL2-25	Brown	2 Str.	25	6.4	2.41	0.56	0.09	0.25	0.25	1.13	0.63	71101-2
CCL1-25	Green	1 Str.	25	9.2	2.59	0.97	0.09	0.25	0.38	1.75	0.88	71096-1
CCL1/0-31	Pink	1/0 Str.	10	10.8	2.69	0.75	0.13	0.34	0.31	1.75	0.88	71097-8
CCL1/0-38	Pink	1/0 Str.	10	10.8	2.69	0.75	0.13	0.41	0.38	1.75	0.88	71098-5
CCL2/0-38	Black	2/0 Str.	10	12.2	3.81	0.81	0.13	0.41	0.38	2.81	1.75	71102-9
CCL2/0-50	Black	2/0 Str.	10	12.2	3.81	0.81	0.13	0.50	0.50	2.81	1.75	71103-6
CCL3/0-38	Orange	3/0 Str.	10	16.2	3.25	0.94	0.13	0.41	0.38	1.81	1.00	71106-7
CCL3/0-50	Orange	3/0 Str.	10	16.2	3.81	0.81	0.13	0.50	0.50	2.81	1.75	71107-4
CCL4/0-38	Purple	4/0 Str.	10	18.8	3.28	1.06	0.14	0.41	0.38	1.81	1.00	71113-5
CCL4/0-50	Purple	4/0 Str.	10	18.8	4.25	1.09	0.13	0.50	0.50	2.81	1.75	71114-2
CCL250-38	Yellow	250 MCM	10	23.6	3.43	1.13	0.15	0.41	0.38	1.81	1.00	71104-3
CCL250-50	Yellow	250 MCM	10	23.6	4.34	1.13	0.16	0.50	0.50	3.00	1.75	71105-0
CCL300-38	White	300 MCM	10	27	3.43	1.25	0.16	0.41	0.38	1.81	1.00	71108-1
CCL300-50	White	300 MCM	10	27	4.53	1.19	0.16	0.50	0.50	3.00	1.75	71109-8
CCL350-38	Red	350 MCM	10	32.4	3.56	1.31	0.17	0.41	0.38	1.81	1.00	71110-4
CCL350-50	Red	350 MCM	10	32.4	4.53	1.34	0.16	0.50	0.50	3.00	1.75	71111-1
CCL400-38	Blue	400 MCM	10	37.9	3.62	1.41	0.18	0.41	0.38	1.81	1.00	71115-9
CCL400-50	Blue	400 MCM	10	37.9	4.81	1.41	0.16	0.50	0.50	3.00	1.75	71116-6
CCL500-38	Brown	500 MCM	10	52.2	3.87	1.56	0.21	0.41	0.38	1.81	1.00	71117-3
CCL500-50	Brown	500 MCM	10	52.2	5.00	1.53	0.22	0.50	0.50	3.00	1.75	71118-0
CCL600-38	Green	600 MCM	5	85	4.18	1.72	0.22	0.41	0.38	1.18	1.00	71120-3
CCL600-50	Green	600 MCM	5	85	5.13	1.72	0.22	0.50	0.50	3.00	1.75	71121-0
CCL750-50	Black	750 MCM	5	85.6	5.22	1.72	0.27	0.50	0.50	3.00	1.75	71122-7
CCL1000-50	White	1000 MCM	5	126.6	5.44	2.25	0.28	0.50	0.50	3.00	1.75	71100-5

### Notes

Consult factory for availability of special mounting hole sizes.

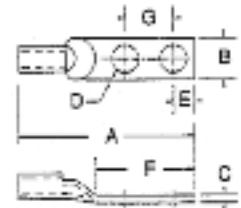
# LONG BARREL COPPER COMPRESSION CONNECTORS



## Two-Hole Long Barrel Copper

For use with copper conductors **only**.

- Specially designed for industrial and building applications.
- **GALVAN** compression connectors are manufactured from high strength pure electrolytic copper to insure both maximum strength and conductivity.
- All connectors are color coded for quick, easy identification with matching die.
- Tin-plated for corrosion resistance.
- Specially chamfered barrel for ease of installation.
- Can be used for high voltage application up to 35 kV provided proper high voltage insulation techniques are used.
- U.L. Listed for AWG conductor when installed with approved tools and dies.



Catalog Number	Die Color	Cond.	Pcs. Per Ctn.	Wt. Per 100	Dimensions							NAED UPC No. 632591-
					A	B	C	D	E	F	G	
CCBL8-25	Red	8 Str.	50	3.0	2.88	0.41	0.06	0.25	0.25	1.44	0.63	71094-7
CCBL6-25	Blue	6 Str.	50	3.2	2.25	0.41	0.06	0.25	0.25	1.25	0.63	71091-6
CCBL6-38	Blue	6 Str.	50	3.2	2.56	0.50	0.06	0.38	0.38	1.25	1.00	71632-1
CCBL4-25	Gray	4 Str.	50	3.9	2.19	0.53	0.19	0.25	0.25	1.19	0.63	71087-9
CCBL4-50	Gray	4 Str.	50	3.9	2.19	0.53	0.19	0.50	0.25	1.19	0.63	61278-4
CCBL2-31	Brown	2 Str.	25	6.1	2.81	0.44	0.09	0.33	0.38	1.38	0.75	71080-0
CCBL1-31	Green	1 Str.	10	6.9	2.97	0.66	0.09	0.33	0.38	1.38	0.88	71074-9
CCBL1/0-31	Pink	1/0 Str.	10	8.8	3.50	0.71	0.12	0.33	0.50	1.62	1.00	71076-3
CCBL1/0-50	Pink	1/0 Str.	10	8.8	3.97	0.75	0.13	0.50	0.50	3.00	1.75	71077-0
CCBL2/0-50	Black	2/0 Str.	10	15	4.19	0.81	0.13	0.50	0.50	3.00	1.75	71082-4
CCBL3/0-50	Orange	3/0 Str.	10	16	4.44	0.94	0.13	0.50	0.50	2.94	1.75	71084-8
CCBL4/0-50	Purple	4/0 Str.	10	22	4.69	1.03	0.13	0.50	0.50	3.00	1.75	71088-6
CCBL250-50	Yellow	250 MCM	10	27	4.91	1.06	0.13	0.50	0.50	3.00	1.75	71083-1
CCBL300-50	White	300 MCM	10	31	5.22	1.19	0.13	0.50	0.50	3.00	1.75	71085-5
CCBL350-50	Red	350 MCM	10	40	5.34	1.34	0.16	0.50	0.50	3.00	1.75	71086-2
CCBL400-50	Blue	400 MCM	6	45	5.44	1.41	0.19	0.50	0.50	3.00	1.75	71089-3
CCBL500-50	Brown	500 MCM	6	66	5.94	1.59	0.19	0.50	0.50	3.00	1.75	71090-9
CCBL600-50	Green	600 MCM	6	75	5.75	1.72	0.22	0.50	0.50	3.00	1.75	71092-3
CCBL750-50	Black	750 MCM	6	115	6.09	1.91	0.25	0.50	0.50	3.00	1.75	71093-0
CCBL1000-50	White	1000MCM	3	152	6.34	2.25	0.28	0.50	0.50	3.00	1.75	71078-7

### Notes

**Consult factory for availability of special mounting hole sizes.**

- UL Listed and CSA Certified for 600 volts when installed with approved tools and dies. Can be used for high voltage applications up to 35
- KV provided proper high voltage installation and insulation techniques are employed.



# COPPER COMPRESSION SPLICES

## Short Barrel Copper Compression Splices

- Specially designed for industrial and building applications.
- GALVAN compression connectors are manufactured from high strength pure electrolytic copper to insure both maximum strength and conductivity.
- All connectors are color coded for quick, easy identification with matching die.
- Tin-plated for corrosion resistance.
- Specially chamfered barrel for ease of installation.
- Can be used for high voltage application up to 35 kV provided proper high voltage insulation techniques are used.
- U.L. Listed for AWG conductor when installed with approved tools and dies.

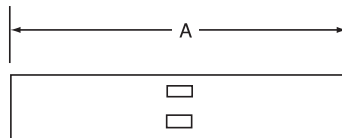
Catalog Number	Die Color	Conductor	Pcs. Per Ctn.	Wt. Per 100	A	NAED UPC No. 632591-
CSS-8	Red	8 Str.	50	1.4	1.62	71241-5
CSS-6	Blue	6 Str.	50	2.2	1.75	71237-8
CSS-4	Gray	4 Str.	50	2.6	1.87	71233-0
CSS-2	Brown	2 Str.	25	4	1.87	71227-9
CSS-1	Green	1 Str.	10	5.2	1.87	71224-8
CSS-1/0	Pink	1/0 Str.	10	5.7	1.87	71225-5
CSS-2/0	Black	2/0 Str.	10	6.5	2.00	71228-6
CSS-3/0	Orange	3/0 Str.	10	7.7	2.12	71230-9
CSS-4/0	Purple	4/0 Str.	10	8	2.12	71234-7
CSS-250	Yellow	250 MCM	6	12.5	2.25	71229-3
CSS-300	White	300 MCM	6	14	2.25	71231-6
CSS-350	Red	350 MCM	6	18	2.37	71232-3
CSS-400	Blue	400 MCM	6	22	2.50	71235-4
CSS-500	Brown	500 MCM	6	35	2.87	71236-1
CSS-600	Green	600 MCM	6	40	3.00	71238-5
CSS-750	Black	750 MCM	3	56	3.38	71240-8
CSS-1000	White	1000 MCM	3	87	3.87	71226-2

### Notes

UL Listed and CSA Certified for 600 volts when installed with approved tools and dies. Can be used for high voltage applications up to 35 KV provided proper high voltage installation and insulation techniques are employed.



E9999





### Long Barrel Copper Compression Splices

- Specially designed for industrial and building applications.
- GALVAN compression connectors are manufactured from high strength pure electrolytic copper to insure both maximum strength and conductivity.
- All connectors are color coded for quick, easy identification with matching die.
- Tin-plated for corrosion resistance.
- Specially chamfered barrel for ease of installation.
- Can be used for high voltage application up to 35 kV provided proper high voltage insulation techniques are used.
- U.L. Listed for AWG conductor when installed with approved tools and dies.

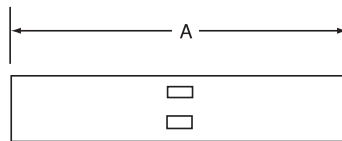
Catalog Number	Die Color	Conductor	Pcs. Per Ctn.	Wt. Per 100	A	NAED UPC No. 632591-
CSL-8	Red	8 Str.	50	3.5	2.00	71223-1
CSL-6	Blue	6 Str.	50	4	2.38	71220-0
CSL-4	Gray	4 Str.	50	5.2	2.38	71216-3
CSL-2	Brown	2 Str.	25	7.8	2.62	71210-1
CSL-1	Green	1 Str.	10	10	2.87	71207-1
CSL-1/0	Pink	1/0 Str.	10	11	2.87	71208-8
CSL-2/0	Black	2/0 Str.	10	13	3.12	71211-8
CSL-3/0	Orange	3/0 Str.	10	15	3.12	71213-2
CSL-4/0	Purple	4/0 Str.	10	16	3.38	71217-0
CSL-250	Yellow	250 MCM	6	25	3.38	71212-5
CSL-300	White	300 MCM	6	26	4.12	71214-9
CSL-350	Red	350 MCM	6	31	4.12	71215-6
CSL-400	Blue	400 MCM	6	37	4.38	71218-7
CSL-500	Brown	500 MCM	6	57	4.62	71219-4
CSL-600	Green	600 MCM	6	65	5.38	71221-7
CSL-750	Black	750 MCM	3	102	5.87	71222-4
CSL-1000	White	1000 MCM	3	140	6.12	71209-5

**Notes**

UL Listed and CSA Certified for 600 volts when installed with approved tools and dies. Can be used for high voltage applications up to 35 KV provided proper high voltage installation and insulation techniques are employed.



E9999



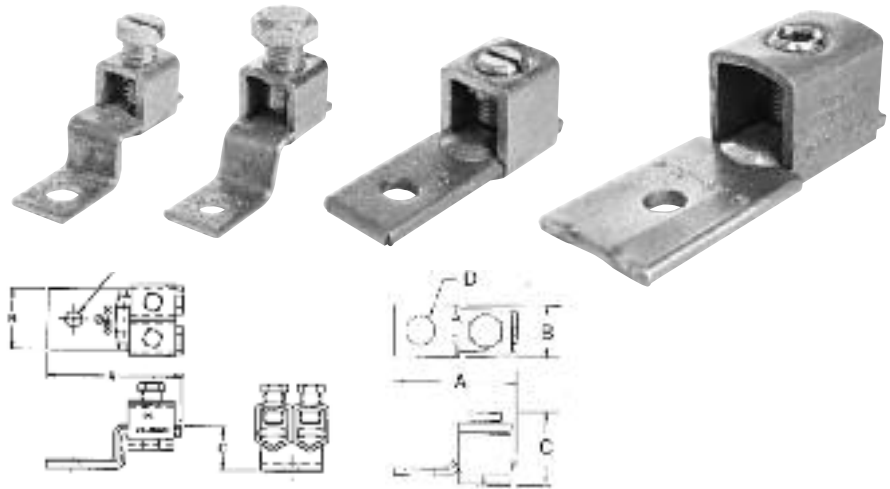




# COPPER MECHANICAL CONNECTORS

## Copper Mechanical Connectors

- GALVAN single hole solderless lugs and double hole solderless lugs are manufactured from high strength pure electrolytic copper to insure both maximum strength and conductivity, plain finished.
- Conductors are inserted between arched pressure bar and V-bottom collar which positions the wire for positive contact and maximum secureness.
- Easy to install with screwdriver, wrench, or pliers.
- Re-useable; plain copper finish.



Catalog Number	Fig. No.	Cond. Range	Pcs. Per Ctn.	Wt. Per 100	Dimensions				NAED UPC No. 632591-
					A	B	C	D	
CF-25	1	10-14	100	1.4	1.00	0.31	0.66	0.16	71129-6
CF-35	1	6-14	100	3.2	1.31	0.50	0.81	0.20	71132-6
CF-90	1	2-8	100	4.5	1.22	0.50	1.00	0.27	71133-3
CF-125	2	1/0-2	50	11	1.97	0.63	1.34	0.27	71124-1
CF-175	2	3/0-4	25	17	2.19	0.75	1.56	0.41	71125-8
CF-225	2	4/0-2	25	25	2.63	1.00	1.81	0.41	71126-5
CF-300	2	350-1/0	18	51	3.19	1.00	2.63	0.41	71128-9
CF-400	2	500-1/0	3	80	4.25	1.50	2.75	0.41	71130-2
CF-650	2	1000-600	1	190	4.63	2.00	3.69	0.53	71131-9
CFS-35	3	8-14	100	2.2	1.19	0.38	0.75	0.20	71139-5
CFS-70	3	4-14	100	2.8	1.31	0.50	0.81	0.27	71142-5
CFS-125	3	1/0-2	50	11	1.97	0.63	1.34	0.27	71134-0
CFS-225	4	4/0-1/0	25	23	2.63	1.00	1.81	0.41	71136-4
CFS-400	4	500-4/0	3	68	4.25	1.50	2.75	0.41	71140-1

**Notes:**

CF represents "bent" tang

CFS represents "straight" tang



## Type FLC Copper Lug

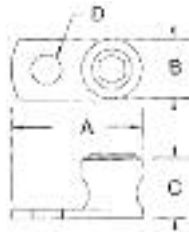
- One-piece construction for strength and durability.
- Excellent for confined quarters.
- Catalog Nos. FLC-500 and FLC-1000 are cast from high strength bronze alloy.
- All other Catalog numbers are cold forged from pure electrolytic copper with 99% conductivity.

Catalog Number	Fig. No.	Cond. Range	Pcs. Per Ctn.	Wt. Per 100	Dimensions				NAED UPC No. 632591-
					A	B	C	D	
FLC-8	1	8-14	100	1.5	0.70	0.34	0.38	0.20	71263-7
FLC-4	1	4-14	100	3.6	1.09	0.53	0.55	0.27	71262-0
FLC-1/0	2	1/0-8	50	9	1.50	0.63	0.75	0.34	71260-6
FLC-250	2	250-6	25	17.12	1.97	0.63	0.94	0.41	71261-3
FLC-500	2	500-4/0	25	65	3.00	1.81	1.47	0.63	71628-4
FLC-1000	2	1000-500	10	155	4.00	2.00	2.53	0.75	71629-1



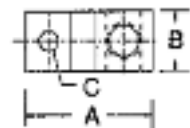
Fig. 1

Fig. 2



## Direct Burial Copper Lay-In Lug

- Made of copper alloy
- For copper conductors
- Stainless steel blade-type set screw
- Open face design
- Perfect for swimming pool grounding
- Rated for 600v
- Listed for direct burial in earth or concrete
- Plated = tin plated.



E1981080



Catalog Number	Conductor Range	Dimensions (in.)				Pcs. Per Ctn.	Wt. Per 100	NAED UPC No. 632591-
		A	B	C	D			
LIC-50S	4-14	.97	.38	.69	.26	100	2	61466-5
LIC-50S Plated	4-14	.97	.38	.69	.26	100	2	



## MISCELLANEOUS

### Oxide Inhibitor

For use with all aluminum conductors.



Catalog Number	Carton Description	Carton Quantity	NAED UPC No. 632591-
CO-OX-4	4 Oz. Bottle	12	71201-9
CO-OX-8	8 Oz. Bottle	12	71202-6

# CMCT-12 HAND OPERATION COMPRESSION TOOL



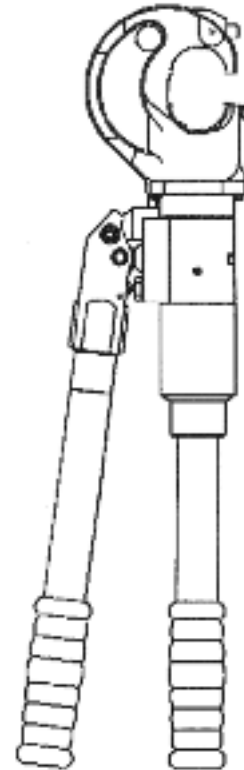
## CMCT-12 Hand Operated Compression Tool

- Lightweight and portable.
- Two speed pumping system for rapid ram advance.
- High strength fiberglass handles with a C-shaped head with 180° rotation for ease of accessibility.
- 12 ton capacity.
- Twist handle release and a high pressure safety relief valve.
- Push button system for ease of die insertion and removal.
- Optional covered C-head for mechanical protection and optional tool bag or carrying case.
- Can be used with either Burndy or T&B "U" or shell-type dies.
- Two-year warranty.

<b>Crimping Capacity</b>	COPPER	-No. 8 stranded through 500 MCM grounding terminals and splices.  -No. 8 stranded through 250 MCM grounding taps and 3/4" ground rod.  -No. 8 stranded through 500 MCM insulated and uninsulated terminals.
	Aluminum	-No. 8 stranded through 750 MCM terminals and splices.
	ACSR	-No. 6 stranded through 556.6 26/7 stranding.

### Safety Notice

All rubber or PVC covered tools have been designed to provide protection against accidental brush contact with energized lines. However, it is the user's responsibility to adhere to all safety procedure and regulations as specified by OSHA, other regulatory bodies and employer safety practices and procedures. GALVAN Electrical, Inc. is not responsible for injuries that can occur to users of this equipment.



Catalog Number	Crimping Force	Operating Pressure	Jaw Opening	Dimensions		Head Width	Tool Weight	NAED UPC No. 632591-
				Length	Depth			
CMCT-12	13.1 US tons 11.9 Metric tons	10,000 PSI 70,000 kPA (700 Bar)	.950 in 6.98 cm	23.25 59.05cm	2.75 in 6.98cm	4.75 in 12.07cm	13.60 lbs. 6.16 kg.	71191-3

#### Notes

\*Call factory for price



## CMIT MECHANICAL INDENT TOOL

### CMIT Mechanical Indent Tool

- High strength, lightweight aluminum body.
- No dies required.
- High strength fiberglass handles.
- Designed to easily crimp a range of connectors without the use of hydraulic tools.
- Adjustable indentor to cover a wide array of wire ranges and wire types of copper and aluminum lugs and splices.
- Indentor adjusting screw is protected to prevent damage from accidental dropping.
- Calibrated scale for copper connectors with wire range sizes.
- Nest and indentor made of high strength steel for durability.
- Optional tool bag.
- One-year warranty.



Catalog Number	Crimping Capacity	Dimensions			Tool Weight	NAED UPC No. 632591-71192-0
		Length	Depth	Width		
CMIT	4/0 AWG, 107.07mm Aluminum Cable	23.63 in.	1.15 in.	4.50 in	5.50 lbs.	
	250 MCM, 126.5mm Copper Cable	60.00cm	3.81cm	11.43cm	2.50k.g	

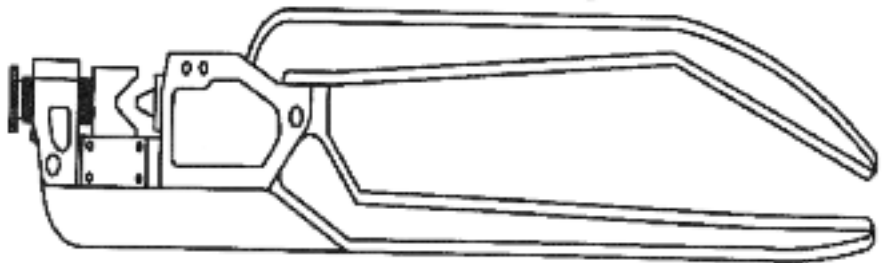
#### Notes

\*Call factory for price



## CCIT Economical Mechanical Indent Tool

- High strength, steel body.
- No dies required.
- Designed to easily crimp a range of fittings without the use of hydraulic tools.
- Adjustable indentor to cover a wide array of wire ranges and wire types of copper and aluminum lugs and splices.
- Calibrated scale for aluminum connectors with wire range from 250 MCM down to #8 str.
- Calibrated scale for copper connectors with wire range from 4/0 AWG down to #8 str.
- Nest and indentor made of high strength steel for durability.
- One-year warranty.



Catalog Number	Crimping Capacity	Dimensions			Tool Weight	NAED UPC No. 632591-71095-4
		Length	Depth	Width		
CCIT	4/0 AWG, 107.07mm Aluminum Cable	23.00 in.	1.15 in.	4.50 in.	6.05 lbs.	
	250 MCM, 126.5 mm Copper Cable	60.00cm	3.81cm	11.43cm.	2.75kg.	

**Notes**

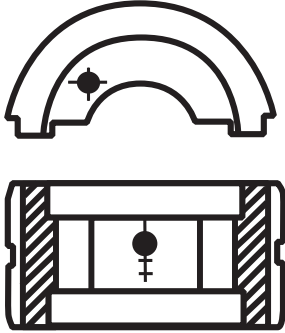
\*Call factory for price



## U DIES

### 12-Ton U Dies

Non-tension U-type 12-ton dies.



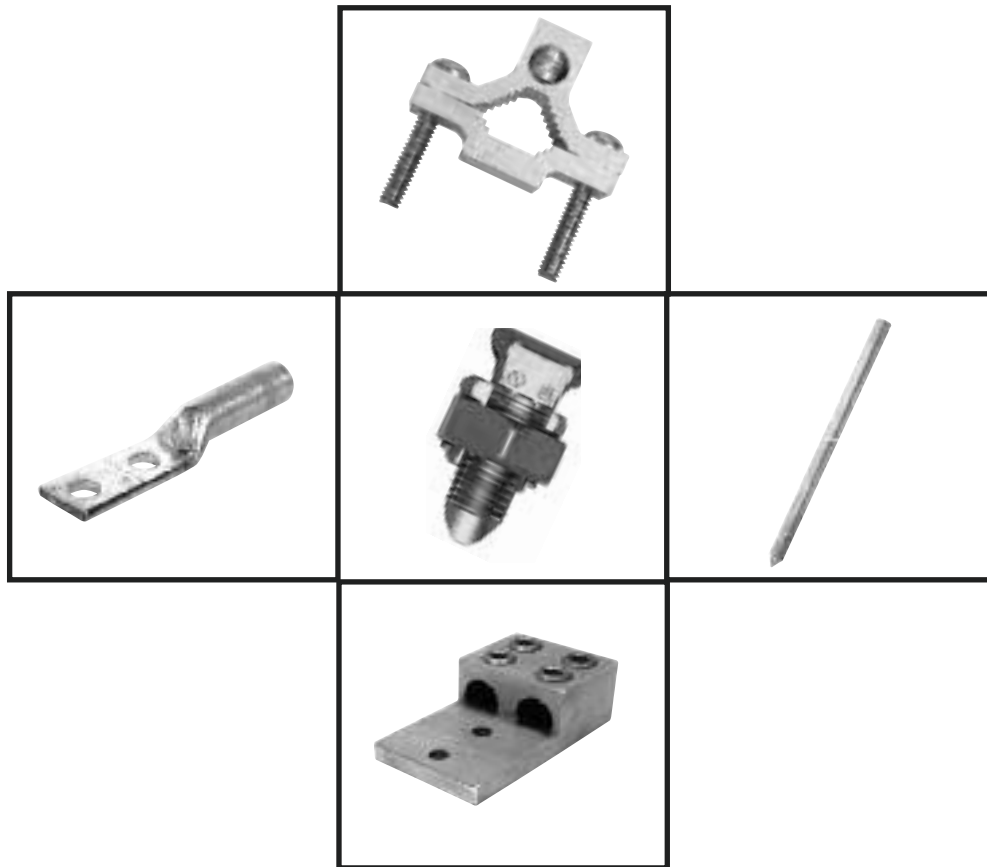
Wire Size	Copper	Aluminum
#8	U8CRT	U8CABT
#6	U6CRT	U6CABT
#4	U4CRT	U4CABT
#3	U3CRT	N/A
#2	U2CRT	U2CABT
#1	U1CRT-1	U1CART
1/0	U25RT	U25ART
2/0	U26RT	U26ART
3/0	U27RT	U27ART
4/0	U28RT	U28ART
250 MCM	U29RT	U29ART
300 MCM	U30RT	U30ART
350 MCM	U31RT	U31ART
400 MCM	U32RT	U32ART
500 MCM	U34RT	U34ART
600 MCM	U36RT	U36ART
750 MCM	U39RT	U39ART-2

**Notes**

N/A = not available.



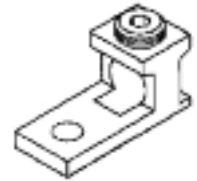
Cross Reference is to be used as an aid in selecting products from GALVAN that are similar to the products of other manufacturers. All Information should be verified by the user.



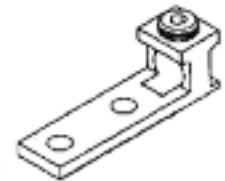




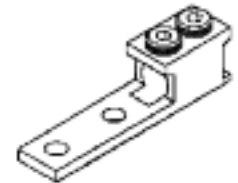
# GALVAN CATALOG CROSS REFERENCE SECTION



Galvan / Comec	IlSCO	NSI	Penn Union	Burndy	Greaves	Homac	T&B	Galvan / Comec discontinued #
LA-2	TA-2	2T	LA-2	KA-2U	-	-	ADR-2	AB-70
LA-6	TA-6S	-	LA-6	KA-6U	-	-	ADR6	AB-50
LA-1/0	TA-0	0T	LA-0	KA-25U	A-1/0	-	ADR11	AB-112
LA-2/0	TA-2/0	-	LA-2/0	KA-26U	A-2/0	-	ADR21	AB-125
LA250	TA-250	250T	LA-250	KA-29U	A-250	A-250	ADR25	AB-250
LA-300	TA-300	300T	-	KA-30U	A-300	A-300	ADR30	AB-300
LA-350	TA-350	350T	LA-350	KA-31U	A-350	A-350	ADR35	AB-350
LA-500	TA-500	500T	LA-500	KA-34U	A-500	A-500	ADR50	AB-500
LA-600	TA-600	600T	LA-600	KA-36U	A-600	A-600	ADR60	AB-600
LA-630	-	BS400T	-	-	-	-	ADR6004	LA-630
LA-800	TA-800	800T	LA-800	KA-40U	A-800	A-800	ADR80	LA-800
LA-800S	TA-800-S	-	-	-	-	A-800S	-	LA-800S
LA-1000	TA-1000	-	LA-1000	KA-44U	A-1000	-	ADR-99	AB-1000

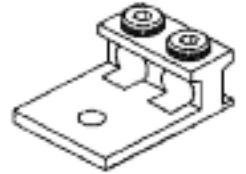


Galvan / Comec	IlSCO	NSI	Penn Union	Burndy	Greaves	Homac	T&B	Galvan / Comec discontinued #
L1M2-350	TA-350-2NS	350L2	LA-350-2	-	A-350N	-	ADR35-12	A1B2-350
L1M2-600	TA-600-2NS	600L2	LA-600-2	KA-36U-2N	A-600N	-	-	A1B2-600



Galvan / Comec	IlSCO	NSI	Penn Union	Burndy	Greaves	Homac	T&B	Galvan / Comec discontinued #
L1D2-350	TA-350-2N	-	LLA2-350-S1	KKA-31U-2N	-	-	-	A1B2-350-2
L1D2-600	TA-600-2N	600LL2	-	KA36U-2N	-	-	ADR60-12D	A1B2-600-2
L1D2-800	TA-800-2N	800LL2	-	-	A800-N	-	ADR80-12D	L1D2-800
L1D2-1000	TA-1000-2N	1000LL2	LLA-1000-S1	-	-	-	ADR99-12D	A1B2-1000-2

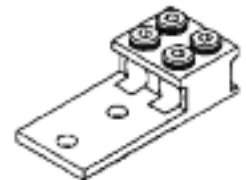
# GALVAN CATALOG CROSS REFERENCE SECTION



Galvan / Comec	IlSCO	NSI	Penn Union	Burndy	Greaves	Homac	T&B	Galvan / Comec discontinued #
DLA-1/0	AU-0	-	L2A-0	K2A-25U	AA-1/0	-	ADR11-21	2AB-112
DLA-2/0	AU-2/0	2-2/0T	-	K2A26U	AA-2/0	-	ADR21-21	2AB-125
DLA-250	AU-250	2-250T	L2A-250	K2A-29U	AA-250	AD-250D	ADR25-21	2AB-250
DLA-350	AU-350	2-350T	LA-350	K2A-31U	AA-350	-	ADR35-21	2AB-350
DLA-600	AU-600	2-600T	L2A-600	K2A-36U	AA-600	AD-600D	ADR60-21	2AB-600
DLA-800	AU-800	2-800T	L2A-800	-	AA-800	-	ADR80-21	DLA-800
DLA-1000	AU-1000	2-1000T	L2A-1000	K2A-44U	AA-1000	-	ADR99-21	2AB-1000



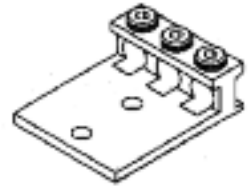
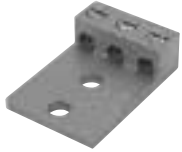
Galvan/Comec	IlSCO	NSI	Penn Union	Burndy	Greaves	Homac	T&B	Galvan / Comec discontinued #
L2M2-350	AU-350-2N	2-350L2	L2A-350-2	KA-31U-2N	AA-600N	-	ADR35-22	2AB2-350



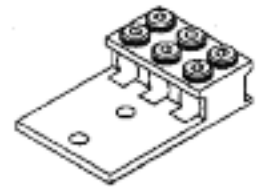
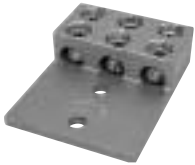
Galvan/Comec	IlSCO	NSI	Penn Union	Burndy	Greaves	Homac	T&B	Galvan / Comec discontinued #
L2D2-350	AU-350-2N	-	-	KK2A-31U-2N	-	-	-	L2D2-350
L2D2-600	AU-600-2N	-	-	KK2A-36U-2N	-	-	ADR60-22D	A2B2-600
L2D2-800	AU-800-2N	-	-	KK2A-40U-2N	AA-800N	-	ADR80-22D	L2D2-800
L2D2-1000	AU-1000-2N	-	-	KK2A-44U-2N	AA-1000N	-	ADR99-22D	L2D2-1000



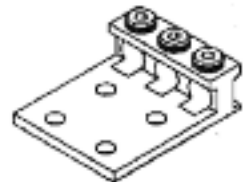
# GALVAN CATALOG CROSS REFERENCE SECTION



Galvan / Comtec	IlSCO	NSI	Penn Union	Burndy	Greaves	Homac	T&B	Galvan / Comtec discontinued #
L3M2-1/0	T3A2-0	-	L3A-1/0-2	K3A-25U-2	-	-	ADR11-32	3AB2-112
L3M2-3/0	T3A2-3/0N	-	L3A-250-2	K3A-27U-2N	-	-	ADR31-32	L3M2-3/0
L3M2-250	T3A2-250N	-	L3A-250-2	K3A-29U-2N	AAA-250N	-	ADR25-32	3AB2-250
L3M2-350	T3A2-350N	-	L3A-350-2	K3A-31U-2N	AAA-350N	-	ADR35-32	3AB2-350
L3M2-500	-	-	L3A-500-2	K3A-36U-2N	-	-	ADR50-32	3AB2-500

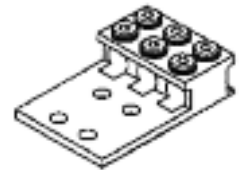


Galvan / Comtec	IlSCO	NSI	Penn Union	Burndy	Greaves	Homac	T&B	Galvan / Comtec discontinued #
L3D2-600	T3A2-600N	-	-	KK3A-36U-2N	AAA-600N	-	ADR60-32D	A3B2-600
L3D2-800	T3A2-800N	-	L3A-800-2	K3A-40U-2N	AAA-800N	-	ADR80-32	L3D2-800
L3D2-1000	T3A2-1000N	-	-	KK3A-44U-2N	AAA-1000N	-	ADR99-32	L3D2-1000

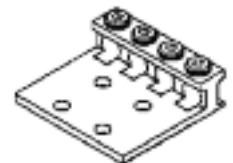
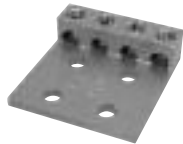


Galvan / Comtec	IlSCO	NSI	Penn Union	Burndy	Greaves	Homac	T&B	Galvan / Comtec discontinued #
L3M4-1/0	T3A4-0	-	-	K3A-25U-4	-	-	ADR11-34	L3M4-1/0
L3M4-3/0	T3A4-3/0N	-	-	K3A-27U-4N	-	-	ADR31-34	L3M4-3/0
L3M4-250	T3A4-250N	-	L3A-250-4	K3A-29U-4N	AAA-250N	-	ADR25-34	3AB4-250
L3M4-350	T3A4-350N	-	L3A-350-4	K3A-31U-4N	AAA-350N	-	ADR35-34	3AB4-350
L3M4-500	T3A4-500N	-	L3A-500-4	-	-	-	ADR50-34	3AB4-500

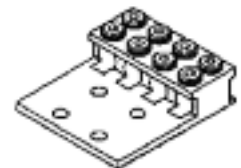
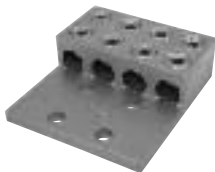
# GALVAN CATALOG CROSS REFERENCE SECTION



Galvan / Comec	IlSCO	NSI	Penn Union	Burndy	Greaves	Homac	T&B	Galvan / Comec discontinued #
L3D4-600	T3A4-600N	3-600LL4	-	KK3A-36U-4N	-	ATA344-600N	ADR60-34D	A3B4-600
L3D4-800	T3A4-800N	3-800LL4	L3A-800-4	KK3A-40U-4N	AAA-800N	-	ADR80-34	L3D4-800
L3D4-1000	T3A4-1000N	3-1000LL4	-	KK3A-44U-4N	AAA-1000N	-	ADR99-34	A3B4-1000



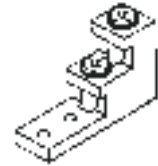
Galvan / Comec	IlSCO	NSI	Penn Union	Burndy	Greaves	Homac	T&B	Galvan / Comec discontinued #
L4M4-250	T4A4-250N	4-250L4	LA4M4-250	K4A-29U-4N	AAAA-250N	AT4A4-250N	ADR25-44	4AB4-250
L4M4-350	T4A4-350N	4-350L4	LA4M4-350	K4A-31U-4N	AAAA-350N	AT4A4-350N	ADR35-44	4AB4-350



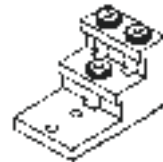
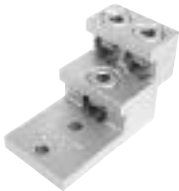
Galvan / Comec	IlSCO	NSI	Penn Union	Burndy	Greaves	Homac	T&B	Galvan / Comec discontinued #
L4D4-600	T4A4-600N	4-600LL4	LA4M4-600	KK4A-36U-4N	-	AT4A4-600N	ADR60-44D	A4B4-600
L4D4-800	T4A4-800N	4-800LL4	LA4M-800	KK4A-40U-4N	AAAA-800N	-	ADR80-44D	L4D4-800
L4D4-1000	-	4-100L4	-	K4A40U-4N	-	-	ADR99-44D	A4B4-1000



# GALVAN CATALOG CROSS REFERENCE SECTION



Galvan / Comec	IlSCO	NSI	Penn Union	Burndy	Greaves	Homac	T&B	Galvan / Comec discontinued #
PV2-300	PB2-300	-	-	K11A-30U	-	-	ASL-30-21	PV2-300
2ABV-500	PB2-500	-	-	K11A-34U-2	-	-	-	PV2-500
2ABV-600	PB2-600	-	PB2-600	K11A-36U-2	AQ2-600	-	ASL-60-22	PV2-600
2ABV-750	PB2-750	-	PB2-750	K11A-39U-2	AQ2-750	-	ASL-75-22	PV2-750



Galvan / Comec	IlSCO	NSI	Penn Union	Burndy	Greaves	Homac	T&B	Galvan / Comec discontinued #
3ABV-500	-	-	-	-	-	-	ASL60-21	PV3-500
3ABV-600	PB3-600	-	PB3-600	K21A-36U-2	AQ3-600	-	ASL-60-32	PV3-600
3ABV-750	-	-	PB3-750	-	AQ3-750	-	ASL-75-32	PV3-750

# GALVAN CATALOG CROSS REFERENCE SECTION



Galvan / Comec	Ilisco	NSI	Penn Union	Burndy	Greaves	Homac	T&B	Galvan / Comec discontinued #
4ABV-500	-	-	-	-	-	-	-	PV4-500
4ABV-600	PB4-600	-	PB4-600	K22A-36U-2	AQ4-600	-	ASL-60-42	PV4-600
4ABV-750	PB4-750	-	PB4-750	K22A-39U-2	AQ4-750	-	ASL-75-42	PV4-750



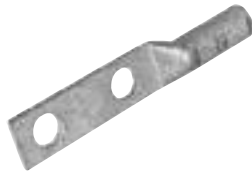
Galvan / Comec	Ilisco	NSI	Penn Union	Burndy	Greaves	Homac	T&B	Galvan / Comec discontinued #
6ABV-500	-	-	-	-	-	-	-	PV6-500



Galvan / Comec	Ilisco	NSI	Penn Union	Burndy	Greaves	Homac	T&B	Galvan / Comec
SR-0	SPA-0	-	SR-0	AMS-0	ABS-1/0	-	ASR-1108	SR-0
SR-2	SPA-2	-	SR-2	AMS-2	ABS-2	-	ASR-0214	SR-2
SR-250	SPA-250	-	SR-250	AMS-250	ABS-250	-	ASR-2506	SR-250
SR-350	SPA-350	-	SR-350	AMS-350	ABS-350	-	ASR-3504	SR-350
SR-500	SPA-500	-	SR-500	AMS-500	ABS-500	-	ASR-6041	SR-500
SR-750	SPA-750	-	SR-750	AMS-750	ABS-750	-	-	SR-750
SR-1000	SPA-1000	-	-	AMS-1000	-	-	-	SR-1000



## GALVAN CATALOG CROSS REFERENCE SECTION



Galvan / Comtec	IlSCO	NSI	Penn Union	Burndy	Greaves	Homac	T&B	Galvan / Comtec
2CLA1/0-38	2ACL-1/0	AL1/0N	BLUA-1/0D1	YA25A5	-	-	ATL102-38	2CLA1/0-38
2CLA2/0-50	2ACL-2/0	AL2/0N	BLUA-2/0D	YA26A3	AL2/0-N	-	ATL202	2CLA2/0-50
2CLA3/0-50	2ACL-3/0	AL3/0N	BLUA-3/0D	YA27A5	AL3/0-N	-	ATL302	2CLA3/0-50
2CLA4/0-50	2ACL-4/0	AL4/0N	BLUA-4/0D	YA28A5	AL4/0-N	-	ATL402	2CLA4/0-50
2CLA250-50	2ACL-250	AL250N	BLUA-025D	YA29A3	AL250-N	-	ATL2502	2CLA250-50
2CLA300-50	2ACL-300	AL300N	BLUA-0300D	YA30A3	AL300-N	-	ATL3002	2CLA300-50
2CLA350-50	2ACL-350	AL350N	BLUA-035D	YA31A3	AL350-N	-	ATL3502	2CLA350-50
2CLA400-50	2ACL-400	AL400N	BLUA-400D2	YA32A3	AL400-N	AL-400 NTN D	ATL4002	2CLA400-50
2CLA500-50	2ACL-500	AL500N	BLUA-050D2	YA34A3	AL500 N	AL-500 NTN D	ATL5002	2CLA500-50
2CLA600-50	2ACL-600	AL600N	BLUA-060D2	YA36A3	AL600-N	AL 600 NTN D	ATL6002	2CLA600-50
2CLA750-50	2ACL-750	AL750N	BLUA-075D1	YA39A5	AL750-N	AL 750 NTN D	ATL7502	2CLA750-50

# GALVAN CATALOG CROSS REFERENCE SECTION



Galvan / Comec	IlSCO	NSI	Penn Union	Burndy	Greaves	Homac	T&B	Galvan / Comec
A-2	-	APS02	-	-	-	-	APS02	A-2
A-4	AK-4/0	APS04	-	-	-	-	APS04	A-4
A-6	AK-6	APS06	-	KSA6	-	-	APS06	A-6
A-1/0	AK-1/0	APS11	SWA-7	KSA-1/0	-	-	APS11	A-1/0
A-2/0	AK-2/0	APS21	SWA-8	KSA-2/0	-	-	APS21	A-2/0
A-250	AK-4/0	-	SWA-10	KSA-4/0	-	-	APS41	A-250
A-350	AK-350	APS350	SWA-11	KSA-350	-	-	APS350	A-350
A-500	AK-500	APS500	SWA-12	KSA-500	-	-	APS500	A-500



Galvan / Comec	IlSCO	NSI	Penn Union	Burndy	Greaves	Homac	T&B	Galvan / Comec
K-1	-	-	-	-	-	-	1H	K-1
K-2	IK-2	N-2	S-2	KS-23	A-7	E 2 D	2H	K-2
K-3	IK-3	-	-	-	-	-	3H	K-3
K-4	IK-4	N-4	S-4	KS-20	A-5	E 4 D	4H	K-4
K-6	IK-6	N-6	S-6	KS-17	A-3	E 6 D	6H	K-6
K-8	IK-8	N-8	S-8	KS-15	A-2	-	8H	K-8
K-10	IK-10	N-10	S-10	KS-90	A-1	-	9H	K-10
K-1/0	IK-1/0	N-1/0	S-1/0	KS-25	A-10	E 1/0 D	10H	K-1/0
K-2/0	IK-2/0	N-2/0	S-2/0	KS-26	A-11	E2/0 D	20H	K-2/0
K-3/0	IK-3/0	N-3/0	-	KS-27	-	E 3/0 D	-	K-3/0
K-250	IK-250	N-250	S-4/0-250	KS-29	A-14	-	40H	K-250
K-350	IK-350	N-350	S-350	KS-31	A-15	E 350 D	350M	K-350
K-500	IK-500	N-500	S-500	KS-34	A-16	-	500M	K-500
K-750	IK-750	N-750	S-750	KS-39	A-17	E 750 D	750M	K-750
K-1000	IK-1000	N-1000	S-1000	KS-44	A-18	E 1000 D	1000M	K-1000





# GALVAN CATALOG CROSS REFERENCE SECTION



Galvan / Comec	IlSCO	NSI	Penn Union	Burndy	Greaves	Homac	T&B	Galvan / Comec
S-1	SK-2	-	SW-6	KSU-23	-	-	1HPS	S-1
S-2	SK-3	-	SW-6	KSU-22	A-8-SP	-	2HPS	S-2
S-4	SK-4	N-4SP	SW-5	KSU-20	A-5-SP	-	4HPS	S-4
S-6	SK-6	N-6SP	SW-4	KSU-17	A-3-SP	E6-GP D	6HPS	S-6
S-1/0	SK-1/0	N-1/0SP	SW-7	KSU-25	A-10-SP	-	10HPS	S-1/0
S-2/0	SK-2/0	N-2/0SP	SW-8	KSU-26	A-11-SP	-	20HPS	S-2/0
S-3/0	SK-3/0	N-3/0SP	-	-	-	-	30HPS	S-3/0
S-250	SK-4/0	-	SW-9A	KSU-29	A-14-SP	-	40HPS	S-250
S-350	SK-350	N-350-SP	SW-11	KSU-31	A-15-SP	-	350HPS	S-350
S-500	SK-500	N-500-SP	SW-12	KSU-34	A-16-SP	-	500HPS	S-500



Galvan / Comec	IlSCO	NSI	Penn Union	Burndy	Greaves	Homac	T&B	Galvan / Comec
SA-1	AS-1	ASC1T	BCUA-1	YS1CA1	ASC1T	-	ASP1	SA-1
SA-2	AS-2	ASC2T	BCUA-2	YS2CA1	ASC2T	-	ASP2	SA-2
SA-4	AS-4	ASC4T	BCUA-4	YS4CA1	ASC4T	E4-GP D	ASP4	SA-4
SA-6	AS-6	ASC6T	BCUA-6	YS6CA1	ASC6T	E 6-GP D	ASP6	SA-6
SA-8	AS-8	-	BCUA-8	-	-	E 8 GP D	ASP8	SA-8
SA-1/0	AS-1/0	ASC1/0T	BCUA-1/0	YS25A1	ASC1/0T	E 1/0 GP D	ASP10	SA-1/0
SA-2/0	AS-2/0	ASC2/0T	BCUA-2/0	YS26A1	ASC2/0T	-	ASP20	SA-2/0
SA-3/0	AS-3/0	ASC3/0T	BCUA-3/0	YS27A1	ASC3/0T	-	ASP30	SA-3/0
SA-4/0	AS-4/0	ASC4/0T	BCUA-4/0	YS28A1	ASC4/0T	E 250 D	ASP40	SA-4/0
SA-250	AS-250	ASC250T	BCUA-025	YS29A1	ASC250T	-	ASP250	SA-250
SA-300	AS-300	ASC300T	BCUA-030	YS30A1	ASC300T	-	ASP300	SA-300
SA-350	AS-350	ASC350T	BCUA-035	YS31A1	ASC350T	-	ASP350	SA-350
SA-400	AS-400	ASC400T	BCUA-040	YS32A1	ASC400T	-	ASP400	SA-400
SA-500	AS-500	ASC500T	BCUA-050	YS34A1	ASC500T	-	ASP500	SA-500
SA-600	AS-600	ASC600T	BCUA-060	YS36A1	ASC600T	-	ASP600	SA-600
SA-750	AS-750	ASC750T	BCUA-075	YS39A1	ASC750T	-	ASP750	SA-750

# GALVAN CATALOG CROSS REFERENCE SECTION



Galvan / Comec	IISCO	NSI	Penn Union	Burndy	Greaves	Homac	T&B	Galvan / Comec
CC1-25	CRA-1-14	-	BLU-1S9	YA1C-L2	-	-	CTL1-14	CC1-25
CC1-31	CRA-1	-	BLU-1S	YA1C-L	-	-	CTL1-516	CC1-31
CC1-38	CRA-1-38	-	BLU-1S1	YA1C-L4	GL-138	-	CTL1-38	CC1-38
CC2-25	CRA-2	-	BLU-2S	YA2C-L2	-	-	CTL2-14	CC2-25
CC2-31	CRB-2	-	BLU-2S1	YA2C-L	GL-256	-	CTL2-516	CC2-31
CC2-38	CRC-2	-	BLU-2S2	YA2C-L4	GL-238	-	CTL2-38	CC2-38
CC4-19	CRA-4	-	BLU-4S	YA4C-L1	-	-	CTL4-10	CC4-19
CC4-25	CRB-4	-	BLU-4S1	YA4C-L	-	HL 4-14 D	CTL4-14	CC4-25
CC4-31	CRB-4-516	-	BLU-4S10	YA4C-L3	GL-456	-	CTL4-516	CC4-31
CC4-38	-	-	BLU-4S2	YA4C-L4	GL-438	-	CTL4-38	CC4-38
CC6-19	CRA-6	-	BLU-6S2	YA6C-L3	-	-	CTL6-516	CC6-19
CC6-25	CRB-6	-	BLU-6S1	YA6C-L	GL-614	-	CTL6-14	CC6-25
CC6-31	-	-	BLU-6S2	YA6C-L3	-	-	CTL6-516	CC6-31
CC6-38	-	-	-	-	-	-	CTL6-38	CC6-38
CC8-19	CRA-8	-	BLU-8S14	YA8C-L	GL-810	-	CTL8-10	CC8-19
CC8-25	-	-	BLU-8S15	YA8C-L1	GL-814	-	CTL8-14	CC8-25
CC8-31	-	-	BLU-8S16	YA8C-L2	-	-	CTL8-516	CC8-31
CC1/0-25	CRA-0-14	-	BLU-1/0S19	YA25-L2	-	-	54152TB	CC1/0-25
CC1/0-31	CRA-0	-	BLU-1/0S	YA25-L	-	-	CTL10-516	CC1/0-31
CC1/0-38	CRB-0	-	BLU-1/0S1	YA25-L4	GL-1038	HL 1/0-39 D	CTL10-38	CC1/0-38
CC1/0-50	-	-	-	-	-	-	CTL10-12	CC1/0-50
CC2/0-38	CRA-2/0	-	BLU-2/0S	YA26-L	GL-2038	HL 2/0-38 D	CTL20-38	CC2/0-38
CC20/50	-	-	BLU-2/0S4	YA26-L6	GL-2048	-	CTL20-12	CC2/0-50
CC3/0-38	CRA-3/0	-	BLU-3/0S	YA27-L4	GL-3038	HL 3/0-38 D	CTL30-38	CC3/0-38
CC3/0-50	CRB-3/0	-	BLU-3/0S1	YA27-L	GL-3048	HL 3/0-48 D	CTL30-12	CC3/0-50
CC4/0-38	CRA-4/0	-	BLU-4/0S	YA28-L4	GL-4038	HL 4/0-38 D	CTL40-38	CC4/0-38
CC4/0-50	CRB-4/0	-	BLU-4/0S1	YA28-L	GL-4048	HL 4/0-48 D	CTL40-12	CC4/0-50
CC250-38	-	-	BLU-025S2	YA29-L4	-	HL 250-38 D	CTL250-38	CC250-38
CC250-50	CRA-250	-	BLU-025S	YA29-L	GL-25048	-	CTL250-12	CC250-50
CC300-50	CRA-300	-	BLU-030S	YA30-L	GL-30048	-	CTL300-12	CC300-50
CC300-62	-	-	-	YA30-L7	-	-	-	CC300-62
CC350-50	CRA-350	-	BLU035S	YA31-L	GL-35048	-	CTL350-12	CC350-50
CC350-62	-	-	BLU-035S3	YA31-L7	-	-	-	CC350-62
CC400-50	CRA-400	-	BLU-040S	YA32-L	GL-40048	-	CTL400-12	CC400-50
CC400-62	CRA-4/0	-	BLU-4/0S	YA28-L4	-	-	CTL400-58	CC400-62



## GALVAN CATALOG CROSS REFERENCE SECTION



Galvan / Comec	IlSCO	NSI	Penn Union	Burndy	Greaves	Homac	T&B	Galvan / Comec
CC500-50	CRA-500	-	BLU-050S2	YA34-L6	GL-50048	-	CTL500-12	CC500-50
CC500-62	CRA-500	-	BLU-050S	YA34-L	-	HL 500-58 D	CTL500-58	CC500-62
CC600-62	CRA-600	-	BLU-060S	YA36-L	-	-	CTL600-58	CC600-62
CC700-62	CRA-700	-	-	YA38-L	-	-	-	CC700-62
CC750-62	CRA-750	-	BLU-075S	YA39-L	GL-75058	-	CTL750-58	CC750-62
CC1000-75	-	-	BLU-100S4	-	GL-10058	-	CTL1000-58	CC1000-75



Galvan / Comec	IlSCO	NSI	Penn Union	Burndy	Greaves	Homac	T&B	Galvan / Comec
CCB1-31	CRA-1L	-	BBLU-1S	YA1C	-	-	CTL1L-516	CCB1-31
CCB2-31	CRA-2L	-	BBLU-2S	YA2C	-	L2-38- D	CTL2L-516	CCB2-31
CCB4-25	CRB-4L	L-414	BBLU-4S	YA4C	-	-	CTL4L-14	CCB4-25
CCB6-25	CRB-6L	L-614	BBLU-6S	YA6C	L-614	-	CTL6L-14	CCB6-25
CCB8-25	CCL-8-10	-	-	-	-	L8-14 D	CTL8L-14	CCB8-25
CCB1/0-38	CRA-1/0L	L-1038	BBLU-1/0S	YA25	-	-	CTL10L-516	CCB1/0-38
CCB2/0-38	CRA-2/0L	L-2038	BBLU-2/0S	YA26	L-2038	-	CTL20L-38	CCB2/0-38
CCB2/0-50	-	L-2048	-	YA26-N	L-2048	-	-	CCB2/0-50
CCB3/0-50	CRB-3/0L	L-3048	BBLU-3/0S	YA27	L-3048	L3/0-48 D	CTL30L-12	CCB3/0-50
CCB4/0-50	CRB-4/0L	L-4048	BBLU-4/0S	YA28	L-4048	-	CTL40L-12	CCB4/0-50
CCB250-50	CRA-250L	L-25048	BBLU-025S	YA29-2LN	L-25048	L250-48 D	CTL250L-12	CCB250-50
CCB300-50	CRA-300L	L-30048	BBLU-030S	YA30	L-30048	-	CTL300L-12	CCB300-50
CCB350-50	CRA-350L	L-35048	BBLU-035S	YA31	L-35048	L350-48-D	CTL350L-12	CCB350-50
CCB400-50	CRA-400L	L-40048	BBLU-040S	YS32	L-40048	-	CTL400L-58	CCB400-50
CCB500-50	CRA-500L	L-50048	BBLU-050S	YA34	L-50048	-	CTL500L-58	CCB500-50
CCB600-62	CRA-600L	L-60058	BBLU-060S	YA36	-	-	CTL600L-58	CCB600-62
CCB750-62	CRA-750L	L-75058	BBLU-075S	YA39-2LN	L-75058	-	CTL750L-58	CCB750-62
CCB1000-62	CRA-1000L	L-10058	BBLU-100S	YA44	L-10058	-	CTL1000L-58	CCB1000-62

# GALVAN CATALOG CROSS REFERENCE SECTION



Galvan / Comec	Ilisco	NSI	Penn Union	Burndy	Greaves	Homac	T&B	Galvan / Comec
CCBL1-31	CRA-1L2	-	BBLU-1D	YA1C-2	-	-	LCN1-516	CCBL1-31
CCBL2-31	CRB-2L2	-	BBLU-2D	YA2C-2	-	-	LCN2-516	CCBL2-31
CCBL4-25	CRB-4L2	L4N	BBLU-4D	YA4C-2	-	-	LCN4-14	CCBL4-25
CCBL6-25	CRB-6L2	-	BBLU-6D	YA6C-2	-	-	LCN6-14	CCBL6-25
CCBL8-25	-	-	-	-	-	-	LCN8-14	CCBL8-25
CCBL1/0-31	CRA-1/0L2	-	BBLU-1/0D	-	-	-	-	CCBL1/0-31
CCBL1/0-50	CRC-1/0L2	-	BBLU-1/0D3	YA25-2	-	-	LCN10	CCBL1/0-50
CCBL2/0-50	CRA-2/0L2	L20N	BBLU-2/0D	YA26-2N	L-20-N	L2/0-N	LCN-20	CCBL2/0-50
CCBL3/0-50	CRB-3/0L2	L30N	BBLU-3/0D	YA27-2N	L-30-N	L3/0-N D	LCN30	CCBL3/0-50
CCBL4/0-50	CRB-4/0L2	L40N	BBLU-4/0D	YA28-2N	L-40-N	L4/0-N	LCN-40	CCBL4/0-50
CCBL250-50	CRA-250L2	L250N	BBLU-025D	YA29-2N	L-250-N	L250-N	LCN-250	CCBL250-50
CCBL300-50	CRA-300L2	L300N	BBLU-030D	YA30-2N	L-300-N	L300-N	LCN-300	CCBL300-50
CCBL350-50	CRA-350L2	L350N	BBLU-035D	YA31-2N	L-350-N	L350-N	LCN-350	CCBL350-50
CCBL400-50	CRA-400L2	L400N	BBLU-040D	YA32-2N	L-400-N	L400-N	LCN-400	CCBL400-50
CCBL500-50	CRA-500L2	L500N	BBLU-050D	YA34-2N	L-500-N	L500-N D	LCN-500	CCBL500-50
CCBL600-50	CRA-600L2	L600N	BBLU-060D	YA36-2N	L-600-N	L600-N	LCN-600	CCBL600-50
CCBL750-50	CRA-750L2	L750N	BBLU-075D	YA39-2N	L-750-N	L750-N	LCN-75	CCBL750-50
CCBL1000-50	CRA-1000L2	L1000N	BBLU-100D	-	L-1000-N	L1000-N	LCN-1000	CCBL1000-50



Galvan / Comec	Ilisco	NSI	Penn Union	Burndy	Greaves	Homac	T&B	Galvan / Comec
CF-25	SLU-25	DE703	SLU-25	KLU25	D-703	-	BTC-1014	CF-25
CF-35	SLU-35	DE704	SLU-35	KLU35	D-704	-	BTC-0614	CF-35
CF-70	SAU-70	DE711	SAU-70	-	D-711	-	-	CF-70
CF-90	SLU-70	DE705	SLU-70	KLU70	D-705	CB-70 D	BTC-0208	CF-90
CF-125	SLU-125	DE706	SLU-125	KLU125	D-706	CB-125 D	BTC-1102	CF-125
CF-175	SLU-175	DE713	SLU-175	KLU175	D-713	-	BTC-3104	CF-175
CF-225	SLU-225	DE707	SLU-225	KLU225	D-707	-	BTC-4102	CF-225
CF-300	SLU-300	DE710	SLU-300	KLU300	D-710	CB-300 D	BTC-3511	CF-300
CF-400	SLU-400	DE708	SLU-400	KLU400	D-708	CB-400 D	BTC-5011	CF-400
CF-650	SLU-650	DE709	SLU-650	KLU650	D-709	-	BTC-9960	CF-650

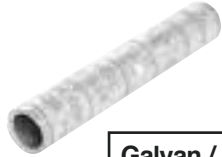


## GALVAN CATALOG CROSS REFERENCE SECTION



Galvan / Comec	IlSCO	NSI	Penn Union	Burndy	Greaves	Homac	T&B	Galvan / Comec
CLA1-25	ACL-1	AL1-14	BLUA-1S1	YA1CA1	AL1-14	-	ATL-1-14	CLA1-25
CLA1-31	ACN-1	-	BLUA-1S3	-	-	-	ATL1-516	CLA1-31
CLA1-38	-	-	BLUA-1S	YA1CA1	-	-	ATL1-38	CLA1-38
CLA2-25	ACL-2	AL2-14	BLUA-2S3	YA2CA1	AL2-14	-	ATL2-14	CLA2-25
CLA2-31	ACN-2	-	BLUA-2S4	YA2CA1	-	-	ATL2-516	CLA2-31
CLA2-38	-	-	BLUA-2S	YA2CA3	-	-	ATL2-38	CLA2-38
CLA4-25	ACL-4	AL4-14	BLUA-4S3	YA4CA1	AL4-14	AL4-14-TND	ATL4-14	CLA4-25
CLA4-31	ACN-4	-	BLUA-4S2	YA4CA3	-	-	ATL4-516	CLA4-31
CLA4-38	-	-	-	-	-	-	ATL4-38	CLA4-38
CLA6-25	ACL-6	AL6-14	BLUA-6S	YA6CA1	AL6-14	AL6-14 TN D	ATL6-14	CLA6-25
CLA6-31	-	-	BLUA-6S2	-	-	-	-	CLA6-31
CLA6-38	-	-	-	-	-	-	ATL6-38	CLA6-38
CLA8-25	ACL-8	-	BLUA-8S	YA8CA3	AL8-14	-	ATL8-14	CLA8-25
CLA1/0-25	-	AL1/0-38	-	YA25A1	-	-	-	CLA1/0-25
CLA1/0-31	ACN-1/0	-	BLUA-1/0S3	YA25A1	AL1/0-38	-	ATL10-516	CLA1/0-31
CLA1/0-38	ACL-1/0	-	BLUA-1/0S*	YA25A3	-	-	ATL10-38	CLA1/0-38
CLA1/0-50	-	-	-	-	-	-	ATL10-12	CLA1/0-50
CLA2/0-31	-	AL2/0-38	-	YA26L	-	-	-	CLA2/0-31
CLA2/0-38	ACL-2/0	AL2/0-48	BLUA-2/0S6	YA26A6	AL2/0-38	-	ATL20-38	CLA2/0-38
CLA3/0-31	-	AL3/0-38	-	YA27A3	-	-	-	CLA3/0-31
CLA3/0-38	ACL-3/0	AL3/0-48	BLUA-3/0S2	YA27A1	AL3/0-38	-	ATL30-38	CLA3/0-38
CLA4/0-31	-	AL4/0-38	-	YA28A1	-	-	-	CLA4/0-31
CLA4/0-38	ACL-4/0	AL4/0-48	BLUA-4/0S2	YA28A1	AL4/0-38	-	ATL40-38	CLA4/0-38
CLA4/0-50	ACN-4/0	-	BLUA-4/0S	YA28A3	AL4/0-48	-	ATL40-12	CLA4/0-50
CLA250-50	ACL-250	AL250-48	BLUA-025S	YA29A1	AL250-48	-	ATL250-12	CLA250-50
CLA300-38	-	-	-	-	-	-	ATL300-38	CLA300-38
CLA300-50	ACL-300	AL300-48	BLUA-030S1	YA30A1	AL300-48	-	ATL300-12	CLA300-50
CLA350-50	ACL-350	AL350-48	BLUA-035S1	YA31A1	AL350-48	-	ATL350-12	CLA350-50
CLA400-50	-	AL400-48	BLUA-040S1	YA32A1	AL400-48	AL-400-48-TND	ATL400-58	CLA400-50
CLA500-50	ACL-500	AL500-48	BLUA-050S2	YA34A1	AL500-48	AL-500-48-TND	ATL500-12	CLA500-50
CLA600-62	ACL-600	AL600-48	BLUA-060S1	YA36A1	AL600-58	AL-600-58-TND	ATL600-58	CLA600-62
CLA750-62	ACL-750	AL750-58	BLUA-075S1	YA39A3	AL750-58	AL-750-58-TND	ATL750-58	CLA750-62

# GALVAN CATALOG CROSS REFERENCE SECTION



Galvan / Comec	IlSCO	NSI	Penn Union	Burndy	Greaves	Homac	T&B	Galvan / Comec
CSL-1	CTL-1	-	BBCU-1	YS1C	C-1	-	CU1	CSL-1
CSL-2	CTL-2	C-2	BBCU-2	YS2C	C-2	C-2 D	CU2	CSL-2
CSL-4	CTL-4	C-4	BBCU-4	YS4C	C-4	C-4	CU4	CSL-4
CSL-6	CTL-6	C-6	BBCU-6	YS6C	C-6	C-6	CU6	CSL-6
CSL-8	CTL-8	-	-	YS8C	-	-	CU8	CSL-8
CSL-1/0	CTL-1/0	C-1/0	BBCU-1/0	YS25	C-1/0	C-1/0	CU10	CSL-1/0
CSL-2/0	CTL-2/0	C-2/0	BBCU-2/0	YS26	C-2/0	C-2/0	CU20	CSL-2/0
CSL-3/0	CTL-3/0	C-3/0	BBCU-3/0	YS27	C-3/0	C-3/0 D	CU30	CSL-3/0
CSL-4/0	CTL-4/0	C-4/0	BBCU-4/0	YS28	C-4/0	C 4/0 D	CU40	CSL-4/0
CSL-250	CTL-250	C-250	BBCU-025	YS29	C-250	C-250	CU250	CSL-250
CSL-300	CTL-300	C-300	BBCU-030	YS30	C-300	C-300	CU300	CSL-300
CSL-350	CTL-350	C-350	BBCU-035	YS31	C-350	C-350	CU350	CSL-350
CSL-400	CTL-400	C-400	BBCU-040	YS32	C-400	C-400	CU400	CSL-400
CSL-500	CTL-500	C-500	BBCU-050	YS34	C-500	C-500	CU500	CSL-500
CSL-600	CTL-600	C-600	BBCU-060	YS36	C-600	C-600	CU600	CSL-600
CSL-750	CTL-750	C-750	BBCU-075	YS39	C-750	C-750	CU750	CSL-750
CSL-1000	CTL-1000	C-1000	BBCU-100	YS44	C-1000	C-1000	CU1000	CSL-1000



Galvan / Comec	IlSCO	NSI	Penn Union	Burndy	Greaves	Homac	T&B	Galvan / Comec
CFS-35	SLS-35	-	-	-	-	-	STC-0614	CFS-35
CFS-70	SAS-70	-	-	KPA-4C	-	CS-70 D	STC-0414	CFS-70
CFS-125	SLS-125	-	-	KPA-25	-	CS-125 D	STC-1102	CFS-125
CFS-225	SLS-225	-	-	KPA-28	-	CS-225 D	STC-4102	CFS-225
CFS-400	SLS-400	-	-	KPA-34	-	CS-400 D	STC-5011	CFS-400



## GALVAN CATALOG CROSS REFERENCE SECTION



Galvan / Comec	Ilisco	NSI	Penn Union	Burndy	Greaves	Homac	T&B	Galvan / Comec
CSS-1	CT-1	SC-1	BCU-1	YS1C-L	SC-1	SC-1	CSP1	CSS-1
CSS-2	CT-2	SC-2	BCU-2	YS2C-L	SC-2	SC-2	CSP2	CSS-2
CSS-4	CT-4	SC-4	BCU-4	YS4C-L	SC-4	SC-4	CSP4	CSS-4
CSS-6	CT-6	SC-6	BCU-6	YS6C-L	SC-6	SC-6	CSP6	CSS-6
CSS-8	CT-8	SC-8	BCU-8	YS8C-L	SC-8	SC-8	CSP8	CSS-8
CSS-1/0	CT-1/0	SC-1/0	BCU-1/0	YS25-L	SC-1/0	SC-1/0	CSP10	CSS-1/0
CSS-2/0	CT-2/0	SC-2/0	BCU-2/0	YS26-L	SC-2/0	SC-2/0	CSP20	CSS-2/0
CSS-3/0	CT-3/0	SC-3/0	BCU-3/0	YS27-L	SC-3/0	SC-3/0	CSP30	CSS-3/0
CSS-4/0	CT-4/0	SC-4/0	BCU-4/0	YS38-L	SC-4/0	SC-4/0	CSP40	CSS-4/0
CSS-250	CT-250	SC-250	BCU-025	YS29-L	SC-250	SC-250	CSP250	CSS-250
CSS-300	CT-300	SC-300	BCU-030	YS30-L	SC-300	SC-300	CSP300	CSS-300
CSS-350	CT-350	SC-350	BCU-035	YS31-L	SC-350	SC-350	CSP350	CSS-350
CSS-400	CT-400	SC-400	BCU-040	YS32-L	SC-400	SC-400	CSP400	CSS-400
CSS-500	CT-500	SC-500	BCU-050	YS34-L	-	SC-500 D	CSP500	CSS-500
CSS-600	CT-600	SC-600	-	YS36-L	SC-600	SC-600	CSP600	CSS-600
CSS-750	CT-750	SC-750	BCU-075	YS39-L	SC-750	SC-750	CSP750	CSS-750
CSS-1000	CT-1000	SC-1000	BCU-100	YS44-L	SC-1000	SC-1000	CSP1000	CSS-1000



Galvan / Comec	Ilisco	NSI	Penn Union	Burndy	Greaves	Homac	T&B	Galvan / Comec
FLC-4	CP-4	-	PLN-4	KA-4C	D-801	MLD 4 D	L70	FLC-4
FLC-8	CP-8	-	PLN-8	KA-8C	D-800	MLD 8 D	L35	FLC-8
FLC-1/0	CP-0	-	PNL-1/0	-	D-802	MLD 1/0 D	L125BB	FLC-1/0
FLC-250	CP-250	-	PNL-250	-	D-804	-	L250	FLC-250

# GALVAN CATALOG CROSS REFERENCE SECTION



Galvan / Comec	IlSCO	NSI	Penn Union	Burndy	Greaves	Homac	T&B	Galvan / Comec
IPC-1/0-2	IPC-1/0-2	-	IPC-1/0-2	BIPC 1/0-2	-	-	IPC1102	NHT1102
IPC-350-350	IPC-350-350	-	IPC-350-350	BIPC 350-350	-	-	IPC3535	NHT3535
IPC-4/0-2/0	IPC-4/0-2/0	-	IPC-4/0-1/0	BIPC 4/0-1/0	-	-	IPC4111	NHT4111
IPC-500-4/0	IPC-500-4/0	-	IPC-500-4/0	BIPC 500-4/0	-	-	IPC5041	NHT5041



Galvan / Comec	IlSCO	NSI	Penn Union	Burndy	Greaves	Homac	T&B	Galvan / Comec
TC-1/0	GTC-0	-	GTC-1/0	-	-	-	TC-10	TC-1/0
TC-2	GTC-2	-	GTC-2	-	-	-	TC-2	TC-2
TC-250	GTC-250-350	-	GTC-250	-	-	-	TC-250	TC-250
TC-350	GTC-250-350	-	GTC-350	-	-	-	TC-350BB	TC-350
TC-500	GTC-500	-	GTC-500	-	-	-	TC-500	TC-500
TC-750	GTC-750-500	-	GTC-750	-	-	-	TC-750	TC-750





## GALVAN CATALOG CROSS REFERENCE SECTION



**Copper**

Galvan	ERICO	Hubbell	Joslyn
5005	611255	-	-
5006	611265	-	J8326
5008L	611380	C611380	J8328
5010L	611300	C611300	J8330
6255	N/A	C615855	J8335
6255-10M	615850		-
6256	N/A		J8336
6256-10M	615860		-
6258-MM	615885	C615885	-
6258	615880	C615880	J8338
6258G13	615883	C615883	-
6260	615800	C615800	J8340
6262	615812	-	-
7508	613480	C613480	J8348
7510	613400	C613400	J8350
1010	614400	-	J8370



**Sectional**

Galvan	ERICO	Hubbell	Joslyn
5008LS	631380	C631380	-
5010LS	631300	C631300	-
6258S	635880	C635880	J9158
6258G13S	635883	C635883	J9158-13
6260S	635800	C635800	J9160
7508S	633480	C633480	J9168
7510S	633400	C633400	J9170
1010S	634400	-	J9190



**Galvanized**

Galvan	ERICO	Hubbell	Joslyn
GR5005	-	8565	J5315
GR5006	-	8566	J5316
GR5008	-	8568	J5318
GR6255F	811350	-	-
GR6256F	815860	8576	J5326
GR6258(UL)	-	-	-
GR6258F	815880	8578	J5328
GR6258FP	815889	-	-
GR6250F	815800	8580	-
GR7508F	813480	8618	J5338
GR7510F	813400	8620	J5340
GR1010F	814400	-	-

Note - Most competitor's galvanized rods are not listed. Verify before purchasing to see if the rods are listed.



## Stainless Steel



Galvan	ERICO	Joslyn
S6255S*	-	-
S6256	-	-
S6258	685880	-
S6260	685800	-
S6260S*	685880S	-
S6212	-	-
S7510	683400	-
S7510S*	683400S	-
S1010	-	-
S1010S*	-	-

Galvan	ERICO	Joslyn
GRC-58G	GCC58	J26512
GRC-34G	-	-

Galvan	ERICO	Joslyn
GRC-58SS	-	-
GRC-34SS	-	-

Galvan	ERICO	Joslyn
GRC-58SST	GSC58	-
GRC-34SST	-	-

Galvan	ERICO	T&B	Hubbell/ Chance	Joslyn
50-LC	CR12S	50LC	CTC12	J-9180
60-C	CR58	60C	CTC58	J9182
70-C	CR34	70C	CTC34	J9183
80-C	CR100	80C	-	-

Galvan	ERICO	T&B	Hubbell/ Chance	Joslyn
50-TC	CC12F	-	CCC12	-
60-TC	CC58	60CNT2	CCC58	-
70-TC	CC34	70CNT	CCC34	-



# GALVAN CATALOG CROSS REFERENCE SECTION



Galvan	ERICO	T&B	Penn Union	Hubbell/Chance	Joslyn
50-DS	DS12	50DS	-	-	-
50-LDS	DS12S	50LDS	P50DS	CTDH 12	J-9185
60-DS	DS58	60DS	P60DS	CTDH 58	J-9186
70-DS	DS34	70DS	P70DS	CTDH 34	J-9187
80-DS	DS1	80DS	P80DS	-	-



Galvan	ERICO	T&B	Penn Union	Hubbell/Chance	Burndy
G-3	CP38	G3	-	-	-
G-4 (use G-5)	CP12	G4	CEB-1	GC-4	GRC12
G-5* (RUS)	CP58	G5	CEB-2	GC-5	GRC58
G5P (plated)	S68	-	-	-	-
G-6 (use SRC)	CP34	G6	CEB-3	GC-6	GRC34
JAB12H	HDC12	JAB12H	CAB-1	GC-103-01	GRD12
JAB58H	HDC58R	JAB58H	CAB-2	GC-103-02	GRD58
JAB58HH	HDC58	-	-	-	-
JAB34H	HDC34	JAB34H	CAB-3	GC-103-03	GRD34
JAB1H	HDC1	JAB1H	-	-	-
SRC	CP34	-	-	-	-

Note - Galvan's G-5 is UL Listed for 1/2" and 5/8" copper and galvanized ground rods, and listed for #4 rebar. SRC does not fit 3/4" galvanized, stainless-steel or solid copper full-size rods.



Galvan	ERICO	T&B	Penn Union
GC	CWP1J	J	8100
GCJ	CWP1J	JJR	-
DCG	ZWP1J	BJ1	-
JD	CWP1JU	JD	-
JD2	CWP2JU	J2D	-
GC2	CWP2J	J2BB	8101
G2124	CWP4J	J2124	8102
G4146	CWP6J	J6	-



Galvan	ERICO	T&B	Penn Union
K1	-	K1	8201
K2	-	K2	8200
K3	-	K3	-
KUL	-	KUL	-



Galvan	ERICO	T&B	Joslyn
CC5006SH	-	-	-
CC5004	-	-	-
CC5002	-	-	-
H1	-	-	-
H2	-	-	-

# GALVAN CATALOG CROSS REFERENCE SECTION



Galvan	ERICO	T&B	Joslyn
CC167P	-	-	CC167P



Galvan	Penn Union	Maclean	Fargo
VC-6SH	FF-6	BVC-6	GC5006SH
VC-4	FF-4	BVC4	GC5004
VC-2	—	BVC2	GC5002
VC-2S	FF-2	BVC2S	GC5002S
VC-20	—	BVC20	GC5020
VC-20S	FF-2/0	BVC-20C	GC5020S
VC-40	FF-4/0	BVC40	GC5040



Galvan	Blackburn /T&B	Penn Union	Burndy	Anderson	Dossert
GTC13	GTC13	GSM-2	GBM26	GC140-01	GFM-13
GTC14	GTC14	GSM-3	GBM29	GC-140-02	GFM-25
GTC23	GTC23	GM-2	GB26	GC141-01	GF13
GTC24	GTC24	GM-3	GB29		GF25



Galvan	Blackburn /T&B	Penn Union	Burndy	Anderson	Dossert
TTC-2	TTC2	HGSE-020	EQC632C	GTCL-34A	
TTC-3	TTC3	HGSE-C1		GTCL-23A	TGC8-50
TTC-4	TTC4				
TTC-2P	TTC2P				
TTC-3P	TTC3P	GSE-C1TN		GTC23A-TP	TGC8-50SN
TTC-4P	TTC4P				



Galvan	Blackburn /T&B	Penn Union	Burndy	Anderson	Dossert
GP100	GP100	5575			



# GALVAN CATALOG CROSS REFERENCE SECTION



Galvan	Blackburn /T&B	Anderson	Fargo	Chance	Kearney	Utilco	Maclean
CC1520	HLC2108	BC-2/0	GH100	S1520-CC	3532	BHLC-1	C1520
CC1520P	HLC2108P		GH100P	1520-GP	3532-4		C1520P
CC1520AP	HLC2108AP						C1520AP
CC1520AP9	HLC2108AP9			1520-AGP			C1520AP9
CC1530	HLC3974	BH-4	GH101	1530-CC	3537	BHLC-2	C1530
CC1530P							C1530P
CC1530AP	HLC3974AP			S1530-AC			C1530A
CC1530AP9	HLC3974AP9		GH101P	1530-AGP	3537-4		C1530AP9



Galvan	Blackburn /T&B	Penn Union	Burndy	Anderson	Dossert
PAA4	PAA4	PCAA-10	UC25R2R	LC51A	AC100
PAA5	PAA5			LC51C	AC101
PAA6	PAA6			LC52A	
PAA10	PAA10		UC32R	LC81A	AC103
PAA12	PAA12	PAA-17		LC53A	AC102
PAA400	PAA400			LC66A	
PAA29	PAA29	PCAA-10-BF			
PAA339	PAA339	PCAA-10-BF			
PAA49	PAA49	PCAA-10-BF		LC51A-XB	
PAA59	PAA59		UC25RS	LC51C-XB	
PAA69	PAA69			LC52A-XB	
PAA109	PAA109		UC28RS		
PAA129	PAA129	PCAA-17-BF			
PAA4009	PAA4009				



Galvan	Blackburn /T&B	Anderson
PAC 345	PAC 345	LC511, LC522
PAC7	PAC7	LC811
PAC3459	PAC3459	LC511XB, LC522XB
PAC7	PAC7	LC811XB

**NEC 2008 250.52.A**

**(5) Rod and Pipe Electrodes.** Rod and pipe electrodes shall not be less than 2.44 m (8 ft) in length and shall consist of the following materials.

- (a) Grounding electrodes of stainless steel and copper or zinc-coated steel shall be at least 15.87 mm (5/8 in.) in diameter, unless listed and not less than 12.70 mm (1/2 in.) in diameter.

**250.56 Resistance of Rod, Pipe and Plate Electrodes.** A single electrode consisting of a rod, pipe, or plate that does not have a resistance to ground of 25 ohms or less **shall be augmented by one additional electrode** of any of the types specified by 250.52(A) (4) through (A) (8). Where multiple rod, pipe, or plate electrodes are installed to meet the requirements of this section, they shall not be less than 1.8 m (6 ft) apart.

FPN: The paralleling efficiency of rods longer than 2.5 m (8 ft) is improved by spacing greater than 1.8 m (6 ft).



## TERMS AND CONDITIONS

**1. Definitions.** "Seller" means GALVAN INDUSTRIES, INC.; "Buyer" means the company, person or other entity who is the purchaser of the Goods; "Goods" means any goods or materials ordered and sold pursuant to the terms and conditions set forth herein.

**2. Price.** Unless otherwise stated, price of the Goods shall be the price in effect at the date and time of shipment. Seller reserves the right to adjust price based on volume purchases; any discounts allowed for volume purchases will be in the Seller's sole discretion. Price does not include any sales, use, excise or similar taxes which shall be added to the price of the Goods and shall be the responsibility of Buyer. Unless otherwise stated, minimum order is \$125.00 (excluding freight) on any single order. Each shipment will be separately invoiced.

**3. Payments Terms.** Terms of payment are net thirty (30) days. Interest on late payments shall be applicable at the rate of one and one-half percent (1.5%) per month or an annual percentage rate of eighteen (18%) per annum. In addition, Buyer shall be obligated for Seller's reasonable attorneys' fees that may be incurred by Seller to collect any sums due Seller hereunder. Seller reserves the right to apply any payments received from Buyer to any outstanding invoice of Seller in Seller's sole discretion.

**4. Freight.** The purchase price of the Goods shall be F.O.B. shipping point with respect to orders of \$2000 or more to a single destination. If Buyer specifies a more costly routing and/or handling than would be normally applicable, or if priority shipping is requested, total shipping charges are chargeable to Buyer regardless of freight allowance terms. In situations of "prepay and add" Galvan is unable to provide a copy of the actual freight bill due to agreements with our carriers regarding rate disclosure confidentiality.

### **5. Delivery.**

(a) Seller's place and point of delivery shall be deemed to be delivery to a carrier at Seller's plant in Harrisburg, N.C., or such other designated shipping point designated by Seller. If Buyer fails to furnish complete shipping directions to Seller within a reasonable time of placing the order, Seller, in Seller's discretion, may make necessary shipping arrangements with a carrier selected by Seller, the cost of which shall be paid by Buyer.

(b) If and to the extent a delivery date is stated, it is the estimated delivery date only. All accepted orders, whether or not delivery dates are specified thereon, shall be subject to delays or failures in manufacture or delivery due to causes beyond the control of Seller or carrier. Buyer's obligations shall continue notwithstanding any delay in delivery, provided if performance by Seller is prevented in whole or in part for a period of three (3) consecutive months, then in such event Seller or Buyer (provided Buyer is not responsible for the delay) may cancel any order that has not been shipped as of such date.

(c) If Buyer is unable for any reason to accept delivery of the Goods according to the mutually established schedule, Seller at its option and after three (3) days written notice to Buyer may place the Goods in storage, in which event Buyer shall pay any and all storage or other related costs. If Buyer fails to accept any delivery or part thereof, then Seller may at its option treat such failure as a breach of this Agreement and exercise any and all remedies available to it pursuant to the terms and conditions set forth herein or available to it as a matter of law.

**6. Credit.** Seller's obligations are at all times subject to Seller's approval of Buyer's credit standing. Upon request, Buyer shall furnish Seller such credit information as may be customary and as may be reasonably requested by Seller. Seller, at its discretion, reserves the right to require payment in advance or C.O.D. and/or otherwise modify credit terms. If at any time Buyer is past due with respect to amounts due Seller, Seller at its option (without liability or prejudice to any other remedies), may decline to ship, or stop any Goods in transit, until such time Seller receives payment in full of all amounts owing to it by Buyer or otherwise receives assurances satisfactory to Seller of such payment.

**7. Risk of Loss.** Risk of loss or damage to the Goods shall be solely that of Buyer upon delivery to a carrier for shipment; any loss or damage subsequent to such delivery shall not be the responsibility of Seller, provided further any such loss shall not release Buyer from Buyer's obligation to pay for the Goods. Any claim for damage or loss in transit must be asserted by Buyer against the carrier.

**8. Warranty.** Seller warrants that the Goods will conform to the description stated herein subject to tolerances and variations consistent with current trade practices, testing and inspections methods. Seller makes no other warranties hereunder, expressed or implied. Seller specifically disclaims any implied warranties of merchantability or fitness for a particular purpose.

### **9. Claims**

(a) Buyer shall inspect the Goods immediately upon receipt. Any claim that the Goods have been damaged or otherwise do not conform must be made to Seller in writing within ten (10) days of receipt of such Goods by Buyer. All claims for defective or non-conforming Goods must be submitted in writing to Galvan Industries, Inc., accompanied with a copy of the signed bill-of-lading noting the damage/shortages, and any other information (photos, etc) supporting your claim. PO Box 369, Harrisburg, NC 28075. In the absence of such notice, the Goods shall be deemed to be accepted by Buyer.

(b) With respect to any valid claims properly submitted hereunder, Buyer's exclusive remedy and Seller's sole liability shall be limited to Seller repairing or replacing Goods that do not conform to specifications, or at Seller's sole option refunding the purchase price of the Goods. In no event shall Seller have any liability to damages in connection with the sale of the Goods in an amount exceeding the purchase price of the Goods sold. Seller shall have no liability for any consequential, special or indirect damages.

(c) Claims for quantity deviations or unit pricing errors are deemed waived unless submitted in writing within thirty (30) days of notice of invoice.

**10. Quotations.** Quotations, based on plans and specifications, are Seller's interpretation of the requirements and include only the material described and listed on the quotation unless otherwise stated. Quotations will be in writing and unless otherwise specified will remain in effect for a period of thirty (30) days from issue date. Formal written purchase orders for work covered by any quotation submitted must be received within forty-five (45) days from the date of quotation. Prices and inventory classifications are subject to changes without notice, and are those in effect at the time of shipment.

**11. Errors.** Galvan reserves the right to correct at any and all times any errors and omissions relating to any component or item upon which a purchase order may be based, including, but not limited to, clerical or stenographic errors or omissions as may relate to quotations, price, catalog and other materials supplied by Galvan, or other terms and conditions as reasonably determined by Seller.

**12. Returns.** Goods may be returned for credit upon request and upon Seller's approval for return authorization. Any returned items are subject to reasonable restocking charges which unless otherwise agreed to by Seller shall be deemed to be twenty-five percent (25%) of the price of the Goods returned. Any returned items must be in saleable condition, in the original standard packages, and conform to current catalog descriptions. All returned material is to be shipped to seller freight prepaid.

Unless otherwise stated, these terms and conditions govern the purchase and sale of the Goods. All terms and conditions, including price, are subject to change without notice as to any Goods not shipped as of the effective date of such change.

**13. Cancellation.** Orders received and accepted by Seller may not be cancelled or changed subsequent to delivery, prior to that date such orders received and accepted by Seller with the written permission of Seller. Any cancellation or change shall be subject to applicable charges for labor, material, and other costs actually incurred by Seller.

**14. Seller's Remedies.** If Buyer cancels this Agreement prior to shipment for any reason, without Seller's consent, Buyer shall pay Seller for all costs and expenses incurred by Seller, including the cost of all work executed or performed; any special engineering costs and commitments made by Seller prior to the time of cancellation; and all other incidental and storage costs incurred prior to resale.

**15. Binding Nature.** These terms and conditions shall be binding upon the parties hereto, their successors and assigns.

**16. Authority.** Any person, employee or agent otherwise acting on behalf of Buyer hereunder shall be deemed to have full authority to act on behalf of Buyer which Seller may rely on exclusively without further inquiry.

**17. Governing Law.** This Agreement shall be construed in accordance with and governed by laws of the state of North Carolina.



**Galvan Industries, Inc.**

**Electrical Products Division**  
**[www.galvanelectrical.com](http://www.galvanelectrical.com)**

P.O. Box 369, 7320 Millbrook Road, Harrisburg, NC 28075  
Phone: 704-455-5102 • Fax:704-455-5215



**Galvan Industries, Inc.**

**Electrical Products Catalog**

**9th Edition**

**G009**