

NEW!

Floor Box Kits FLBR6500 series

One-Piece Non-Metallic Box with Steel Bracket, Plastic Cover

**EASY
SECURE
INSTALLATION**
5 DECORATOR
COLORS

NEW!
PLASTIC BOX
with SPRING CLIP



FLBR6500LA
Light Almond

FLBR6500CA
Caramel

Arlington's **FLOOR BOX KITS** with round plastic boxes and plastic covers offer easy, secure installation in existing floors. *AND great-looking results!*

The gasketed plastic covers come with a decorator-style receptacle and a single flip lid in five designer colors: white, light almond, brown, gray and caramel. They cover miscut openings, and install nearly flush with the floor, preventing damage to devices in the box.



FLBR6500BR
Brown

Easy, secure installation

FLBR6500 series floor boxes install quickly and easily in an *existing* floor with a 5" hole saw. A bendable steel spring clip holds the box securely against the subfloor when the captive screws are tightened.

- For floors up to 1-1/2" thick
- UL Listed



1 Using a hole saw cut a 5" diameter opening in the floor and subfloor.



2 Pull wire through supplied NM cable connector. Insert box, bending the clip as necessary to fit through the opening.



3 Rotate box to desired orientation. Tighten #10-32 screws to pull box securely against the underside of subfloor.



Underside of subfloor

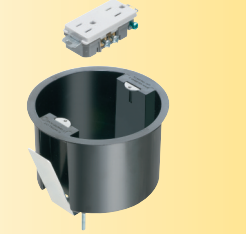
Round Plastic Box with Plastic Cover

Catalog Number	UPC/DEI/NAED Mfg. #018997	Description Cover Color	Unit/Std Pkg
FLBR6500W	23168	White	1
FLBR6500LA	52323	Light Almond	1
FLBR6500GY	52322	Gray	1
FLBR6500CA	52321	Caramel	1
FLBR6500BR	52320	Brown	1

Kit includes non-metallic floor box, plastic cover with single flip lid, cover cap, 15A decorator-style receptacle, (2) #6-32 x 1" screws, NM94 and NM95 cable connectors



FLBR6500W
White



FLBR6500GY
Gray



4 Fasten cover on box using the two #6-32 x 1" screws provided.



Arlington
1 Stauffer Industrial Park
Scranton, PA 18517
800/233.4717
Fax 570/562.0646
www.aifittings.com

Another Floor Box Option FLBT6520 series

with Brass or Nickel-plated Brass Trapdoor Covers • 20A Receptacle

Installs just like FLBR6500 series *in a FLOOR*



1 Cut a 5" diameter opening. Insert box.



2 Secure box by tightening two #10 screws inside box.



FLBT6520MB

3 Wire receptacle.



FLBT6520UMB

or a *COUNTERTOP*



4 Install trapdoor coverplate to box using the two #6-32 screws provided. Round cover hides miscut openings



6 Rotate box/cover assembly into position, lining it up parallel with backsplash, if installing in a countertop.



FLBT6520GMB

PARALLEL Installation

NEW!
PLASTIC BOX
with SPRING CLIP

**NO
GLUING!**
THREE 20A
RECEPTACLE
OPTIONS

Plastic Box with Metal Covers

Catalog Number	UPC/DEI/NAED Mfg. #018997	Description Metal Cover Finish	Installed UL LISTED Device	Unit/Std Pkg
FLBT6520UMB	22056	Brass	20A decorator-style TR receptacle, with (2) USB ports	1
FLBT6520MB	22112	Brass	20A decorator-style Tamper Resistant receptacle	1
FLBT6520GMB	22110	Brass	20A decorator-style Tamper Resistant GFCI receptacle	1
FLBT6520UNL	22057	Nickel-plated Brass	20A decorator-style TR receptacle, with (2) USB ports	1
FLBT6520NL	22113	Nickel-plated Brass	20A decorator-style Tamper Resistant receptacle	1
FLBT6520GNL	22111	Nickel-plated Brass	20A decorator-style Tamper Resistant GFCI receptacle	1



FLBT6520MB



FLBT6520GMB



FLBT6520UMB



FLBT6520NL

with 20A decorator-style TR receptacle



FLBT6520GNL

with 20A decorator-style TR, GFCI receptacle



FLBT6520UNL

with 20A decorator-style TR receptacle w (2) USB ports



Arlington

1 Stauffer Industrial Park
Scranton, PA 18517
800/233.4717
Fax 570/562.0646
www.aifittings.com

Visit our website to see our entire line of floor box kits, boxes, cover trim kits and accessories

Distributed by