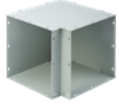




ELLIOTT ELECTRIC SUPPLY

We Deliver...Lower Cost, Quality Products, & Personal Service

2310 N. Stallings Dr.
75964-0000, TX Nacogdoches
Phone: 936-569-7941
Fax: 936-560-4685



F44G90E 4X4 90D N1 Wway Elb

Hoffman Enclosures, Inc.

| | |
|------------------|---|
| Catalog Number | F44G90E |
| Manufacturer | Hoffman Enclosures, Inc. |
| Description | Elbow 90-Degree Lay-In Wireway, 4.00X4.00, Gray, Mild Steel |
| Weight per unit | 2.0 (lbs/each) |
| Product Category | Nema Type 1 Wireway & Fittings |

Features

| | |
|-----------|------------|
| ip rating | IP30 |
| Material | MILD STEEL |

Material, Color, and Finish

| | |
|------------|---------------|
| Color | Gray |
| Color Code | ANSI 61 |
| Finish | Powder Coated |

Dimensions and Weight

| | |
|--------|---|
| Height | 4 |
| Width | 4 |

Descriptions

| | |
|------------------------|--|
| Description | 4X4 90D N1 WWAY ELB |
| extra long description | NVENT HOF F44G90E 90 Elbow |
| Features | Lay-in Painted 90-Degree Elbows have all removable sides, retaining lay-in feature regardless of how the elbow is oriented. Lay-in feature allows wires and cables can be laid in along wireway run. No pulling through of wires or cables prevents damage to insulation that often occurs in a pull-through wiring system. Sides are held together with screws. |
| Long Description | Elbow 90-Degree Lay-in Wireway, 4.00x4.00, Gray, Mild Steel |
| Product Type | 90 Elbow |

Manufacturer Information

| | |
|---------------------------|----------------|
| Brand | Nvent Hoffman |
| GTIN | 00783510525200 |
| Manufacturers Part Number | F44G90E |
| UPC | 783510525200 |

Taxonomies, Classifications, and Categories

| | |
|----------------------|-------------------------------|
| Category Description | STEEL WIRE WAY JUNCTION BOXES |
| Type | ELBOW |



ELLIOTT ELECTRIC SUPPLY

We Deliver...Lower Cost, Quality Products, & Personal Service

2310 N. Stallings Dr.
75964-0000, TX Nacogdoches
Phone: 936-569-7941
Fax: 936-560-4685

Packaging

| | |
|-----------------|---|
| Carton | 1 |
| Package | 4 |
| Weight Per each | 2 |

Uses, Certifications, and Standards

| | |
|-------------|---------------------------------|
| Application | Power Distribution |
| nema rating | 1 Indoor, electrical protection |