

Portable GFCI Cable Assemblies

Applications:

Portable GFCI Cable Assemblies allow for:

- Non-hazardous equipment connections with hazardous receptacles*
- Earth leakage protection when operating equipment such as drills, saws, grinders, and hand lamps

Typically used during plant turnarounds in installations such as:

- Refineries
- Chemical plants
- LNG facilities

Features:

- Increased safety - earth leakage protection provides assurance that personnel and equipment are protected from ground fault hazards when performing maintenance
- Increased reliability - construction meets Eaton's Crouse-Hinds' superior quality standards
- Increased time savings - turn-key solution eliminates need for hazardous plug installed on non-hazardous equipment
- Increased flexibility - available with a variety of plug options to mate with a range of installed base of Eaton's Crouse-Hinds receptacles
- Consult factory for customizable options, including:
 - Cable Color (i.e. black)
 - Connector Type (i.e. twist lock)
 - Cable Length (i.e. 3 ft.)

Certifications and Compliances:

- GFCI Compliances: UL/cUL 943 Listed
- Plug Compliances: UL and CSA Listed Plug (consult Plug catalog pages for details)



Ordering Information:

Plug Style	Plug Pin Configuration	Plug Ratings	Ground Trip Current	Cord Length	Cord Gauge	Cat. #
ENP5201	NEMA 5-20	20 Amp 125 Volt	4-6 mA	2'	12/3 AWG	ENP5201 GFI
ENP5151	NEMA 5-20	15 Amp 125 Volt	4-6 mA	2'	12/3 AWG	ENP5151 GFI
CPP516	UL1686 2W3P	20 Amp 125 Volt	4-6 mA	2'	12/3 AWG	CPP516 GFI
CPP516	UL1686 2W3P	20 Amp 240 Volt	4-6 mA	2'	12/3 AWG	CPP516 GFI 240V

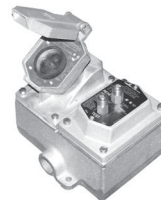
Portable GFCI Cable Assemblies mate with a variety of our industry-leading receptacle solutions:



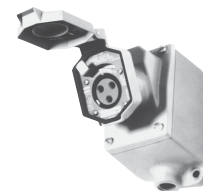
ENR Receptacle
see page 1350



ENC Connector
see pages 1355-1356



ENR-GFCI Kit
see pages 1357-1358



CPS Receptacle
see pages 1344-1346

*For use only in non-hazardous atmospheres (i.e. plant turnarounds).