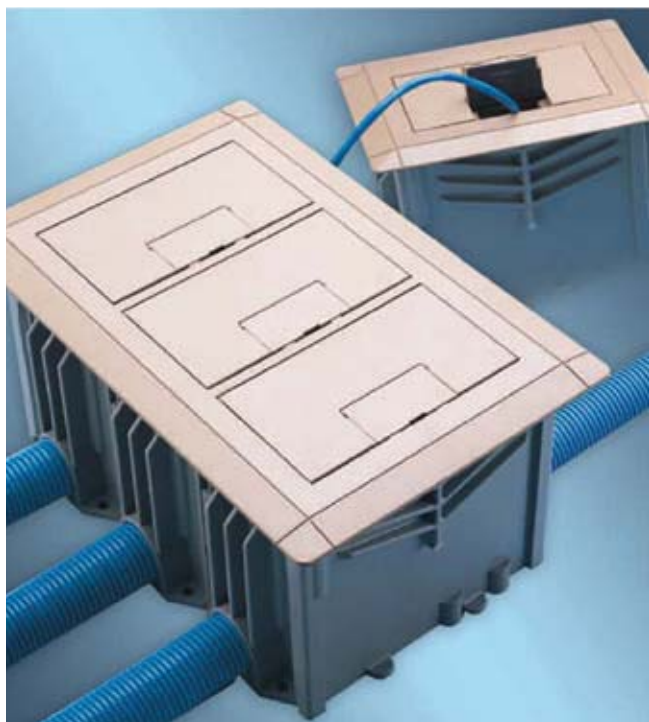


## Rectangular Floor Boxes

### 1-, 2- and 3-Gang

#### Features

- Covers require no adjusting collar. Two screws assure a flush, secure installation.
- Nonmetallic PVC construction, watertight gasket and corrosion-resistant hardware assure long life and reliable performance even in harsh and/or corrosive environments
- One consistent box depth simplifies ordering time and reduces inventory
- Saves time and money on installations with simple saw cut to floor level
- Concrete tight and suitable for any on grade/below grade application; concrete or wood sub-floor construction approved
- Convenient cubic inch capacity markings on inside allow for easy inspection
- PVC molded hubs and reducer plugs included
- Accepts 1/2 in., 3/4 in. and 1 in. conduit tubing or raceway
- Rectangular sides are drillable
- For tile and carpet applications
- Cover options include solid brass, stainless steel and nonmetallic (brown, slate and caramel)
- UL scrub water tested, approved for all types of finished flooring



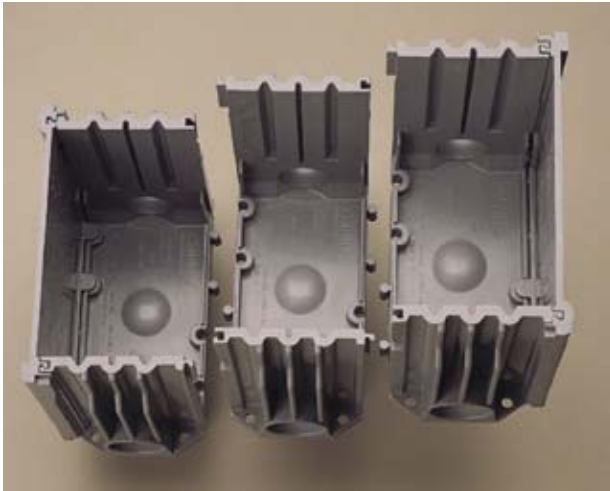
Carlton® Rectangular Floor Box Systems – two-way, data and communications plus easy double or triple ganging, too.

Two-in-one data and communications capability cuts installation time and cost even more, while simple two- and three-gang modularity gives you the flexibility, installation ease and cost-savings no other nonmetallic boxes can.

The covers attach without the use of fasteners, providing a professional, clean installation as well as preserving the aesthetic look of the product. Take a close look at what our rectangular floor box systems can offer you.

## Rectangular Floor Boxes

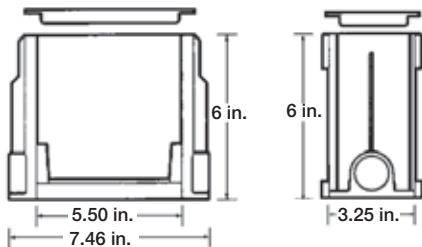
### Installation



With our rectangular boxes, one SKU is all you ever need. Simply remove appropriate sides and slide boxes together to create two- or three-gang boxes for on-the-job flexibility no competitor offers.

### Specifications

#### Rectangular Floor Box



| Cat. No. | Material | Number of gangs | Internal Volume (cu. in.)        | Min. Concrete Depth (in.) | Hubs      | Reducer Plugs                                | Std. Ctn. Qty. | Std. Ctn. Wt. lb. |
|----------|----------|-----------------|----------------------------------|---------------------------|-----------|--|----------------|-------------------|
| E976RFB  | PVC      | 1               | 97.4<br>(16.8 per inch of depth) | 3-1/2                     | (2) 1 in. | (2) 1 in. x 3/4 in.<br>(2) 3/4 in. x 1/2 in. | 3              | 6.92              |

#### Activation Kit



Activation kit provides components to accommodate all data and communications devices plus a divider.



| Cat. No. | Material | Std. Ctn. Qty. | Std. Ctn. Wt. lb. |
|----------|----------|----------------|-------------------|
| E976AK2  | PVC      | 3              | 2.47              |