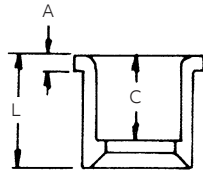


## Conduit bodies and fittings

For use with Schedule 40 and 80 conduit



For connecting different sizes of conduit. Bell x Spigot.



**UL LISTED**  
E23018  
Except where noted by ▶

### Reducer bushings

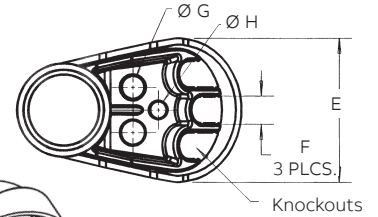
Cat. No.	Size (in.)	Std. Ctn.	L (in.) Typical	A (in.) Typical	C (in.) Typical
E950ED	3/4 x 1/2	100	1 <sup>5</sup> / <sub>32</sub>	1 <sup>3</sup> / <sub>64</sub>	1 <sup>1</sup> / <sub>32</sub>
E950FD-CAR	1 x 1/2	25	1 <sup>11</sup> / <sub>32</sub>	3/16	5 <sup>7</sup> / <sub>64</sub>
E950FE	1 x 3/4	100	1 <sup>11</sup> / <sub>32</sub>	3/16	1 <sup>1</sup> / <sub>64</sub>
E950GE-CAR	1 1/4 x 3/4	10	1 <sup>15</sup> / <sub>32</sub>	3/16	1 <sup>1</sup> / <sub>64</sub>
E950GF	1 1/4 x 1	50	1 <sup>15</sup> / <sub>32</sub>	3/16	1 <sup>9</sup> / <sub>64</sub>
E950HF-CAR	1 1/2 x 1	10	1 <sup>19</sup> / <sub>32</sub>	3/16	1 <sup>9</sup> / <sub>64</sub>
E950HG-CAR	1 1/2 x 1 1/4	10	1 <sup>19</sup> / <sub>32</sub>	3/16	1 <sup>17</sup> / <sub>64</sub>
E950JG-CAR	2 x 1 1/4	10	1 3/4	7/32	1 <sup>17</sup> / <sub>64</sub>
E950JH-CAR	2 x 1 1/2	10	1 3/4	7/32	1 <sup>25</sup> / <sub>64</sub>
E950KJ-CAR	2 1/2 x 2	10	2 <sup>5</sup> / <sub>32</sub>	3/8	1 <sup>27</sup> / <sub>64</sub>
E950LJ-CAR	3 x 2	10	2 1/8	1/4	1 7/8
▶ E950LK	3 x 2 1/2	25	1 <sup>15</sup> / <sub>16</sub>	1/4	1 <sup>11</sup> / <sub>16</sub>
E950NL	4 x 3	25	2 3/4	5/16	1 <sup>15</sup> / <sub>16</sub>



**UL LISTED**  
E23018  
Except where noted by ▶

### Fabricated reducers

Cat. No.	Size (in.)	Std. Ctn.	Std. Wt. (lbs.)
<b>Male x male</b>			
▶ E952JH	1 1/2 x 2	48	20
▶ E952KJ	2 1/2 x 2	48	26
▶ E952LJ	3 x 2	36	21
▶ E952LK	3 x 2 1/2	36	32
▶ E952NL	4 x 3	15	21
▶ E952NM	4 x 3 1/2	15	25
▶ E952PN	5 x 4	12	27
▶ E952RP	6 x 5	10	31
<b>Male x female</b>			
▶ E952NJF	4 x 2	15	16
▶ E952RNF	6 x 4	10	28



**UL LISTED**  
E13938

### Service entrance caps (Vertical applications only)

Cat. No.	Size (in.)	Std. Ctn.	Dimensions (in.)			
			E	F	G	H
E998D	1/2	5	1.76	.45	.45	-
E998E	3/4	20	1.76	.45	.45	-
E998E-CAR	3/4	5	1.76	.45	.45	-
E998F	1	15	2.26	.59	.58	-
E998F-CAR	1	5	2.26	.59	.58	-
E998G-CAR	1 1/4	5	3.52	.74	.71	.50
E998H-CAR	1 1/2	5	3.52	.74	.71	.50
E998J-CAR	2	5	4.26	.83	.78	.56
E998K-UPC	2 1/2	2	7.47	1.70	1.31	1.00
E998L	3	2	7.47	1.70	1.31	1.00
E998N	4	2	10.45	2.25	1.88	1.31

### End caps

Cat. No.	Size (in.)	Std. Ctn.	Std. Wt. (lbs.)
▶ E958D	1/2	100	3
▶ E958E	3/4	100	4
▶ E958F	1	75	5
▶ E958G	1 1/4	40	4
▶ E958H	1 1/2	30	4
▶ E958J	2	25	5
▶ E958K	2 1/2	10	4
▶ E958L	3	10	5
▶ E958N	4	5	17
▶ E958P	5	5	11
▶ E958R	6	5	13

**UL LISTED**  
E23018  
Except where noted by ▶

### PVC riser caps

Cat. No.	Size (in.)	Std. Ctn.	Std. Wt. (lbs.)
▶ E935J	2	25	3
▶ E935L	3	25	5
▶ E935N	4	25	7
▶ E935P	5	25	35
▶ E935R	6	10	7

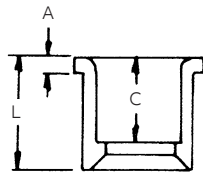


## Conduit bodies and fittings

For use with Schedule 40 and 80 conduit



For connecting different sizes of conduit. Bell x Spigot.



**UL LISTED**  
E23018  
Except where noted by ▶

### Reducer bushings

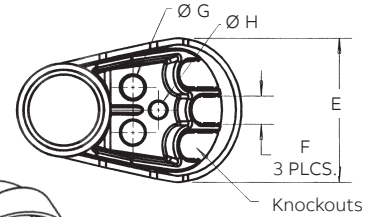
Cat. No.	Size (in.)	Std. Ctn.	L (in.) Typical	A (in.) Typical	C (in.) Typical
E950ED	3/4 x 1/2	100	1 <sup>5</sup> / <sub>32</sub>	1 <sup>3</sup> / <sub>64</sub>	1 <sup>1</sup> / <sub>32</sub>
E950FD-CAR	1 x 1/2	25	1 <sup>11</sup> / <sub>32</sub>	3/16	57/64
E950FE	1 x 3/4	100	1 <sup>11</sup> / <sub>32</sub>	3/16	1 <sup>1</sup> / <sub>64</sub>
E950GE-CAR	1 <sup>1</sup> / <sub>4</sub> x 3/4	10	1 <sup>15</sup> / <sub>32</sub>	3/16	1 <sup>1</sup> / <sub>64</sub>
E950GF	1 <sup>1</sup> / <sub>4</sub> x 1	50	1 <sup>15</sup> / <sub>32</sub>	3/16	1 <sup>9</sup> / <sub>64</sub>
E950HF-CAR	1 <sup>1</sup> / <sub>2</sub> x 1	10	1 <sup>19</sup> / <sub>32</sub>	3/16	1 <sup>9</sup> / <sub>64</sub>
E950HG-CAR	1 <sup>1</sup> / <sub>2</sub> x 1 <sup>1</sup> / <sub>4</sub>	10	1 <sup>19</sup> / <sub>32</sub>	3/16	1 <sup>17</sup> / <sub>64</sub>
E950JG-CAR	2 x 1 <sup>1</sup> / <sub>4</sub>	10	1 <sup>3</sup> / <sub>4</sub>	7/32	1 <sup>17</sup> / <sub>64</sub>
E950JH-CAR	2 x 1 <sup>1</sup> / <sub>2</sub>	10	1 <sup>3</sup> / <sub>4</sub>	7/32	1 <sup>25</sup> / <sub>64</sub>
E950KJ-CAR	2 <sup>1</sup> / <sub>2</sub> x 2	10	2 <sup>5</sup> / <sub>32</sub>	3/8	1 <sup>27</sup> / <sub>64</sub>
E950LJ-CAR	3 x 2	10	2 <sup>1</sup> / <sub>8</sub>	1/4	1 <sup>7</sup> / <sub>8</sub>
▶ E950LK	3 x 2 <sup>1</sup> / <sub>2</sub>	25	1 <sup>15</sup> / <sub>16</sub>	1/4	1 <sup>11</sup> / <sub>16</sub>
E950NL	4 x 3	25	2 <sup>3</sup> / <sub>4</sub>	5/16	1 <sup>15</sup> / <sub>16</sub>



**UL LISTED**  
E23018  
Except where noted by ▶

### Fabricated reducers

Cat. No.	Size (in.)	Std. Ctn.	Std. Wt. (lbs.)
<b>Male x male</b>			
▶ E952JH	1 <sup>1</sup> / <sub>2</sub> x 2	48	20
▶ E952KJ	2 <sup>1</sup> / <sub>2</sub> x 2	48	26
▶ E952LJ	3 x 2	36	21
▶ E952LK	3 x 2 <sup>1</sup> / <sub>2</sub>	36	32
▶ E952NL	4 x 3	15	21
▶ E952NM	4 x 3 <sup>1</sup> / <sub>2</sub>	15	25
▶ E952PN	5 x 4	12	27
▶ E952RP	6 x 5	10	31
<b>Male x female</b>			
▶ E952NJF	4 x 2	15	16
▶ E952RNF	6 x 4	10	28



**UL LISTED**  
E13938

### Service entrance caps (Vertical applications only)

Cat. No.	Size (in.)	Std. Ctn.	Dimensions (in.)			
			E	F	G	H
E998D	1/2	5	1.76	.45	.45	-
E998E	3/4	20	1.76	.45	.45	-
E998E-CAR	3/4	5	1.76	.45	.45	-
E998F	1	15	2.26	.59	.58	-
E998F-CAR	1	5	2.26	.59	.58	-
E998G-CAR	1 <sup>1</sup> / <sub>4</sub>	5	3.52	.74	.71	.50
E998H-CAR	1 <sup>1</sup> / <sub>2</sub>	5	3.52	.74	.71	.50
E998J-CAR	2	5	4.26	.83	.78	.56
E998K-UPC	2 <sup>1</sup> / <sub>2</sub>	2	7.47	1.70	1.31	1.00
E998L	3	2	7.47	1.70	1.31	1.00
E998N	4	2	10.45	2.25	1.88	1.31

### End caps

Cat. No.	Size (in.)	Std. Ctn.	Std. Wt. (lbs.)
▶ E958D	1/2	100	3
▶ E958E	3/4	100	4
▶ E958F	1	75	5
▶ E958G	1 <sup>1</sup> / <sub>4</sub>	40	4
▶ E958H	1 <sup>1</sup> / <sub>2</sub>	30	4
▶ E958J	2	25	5
▶ E958K	2 <sup>1</sup> / <sub>2</sub>	10	4
▶ E958L	3	10	5
▶ E958N	4	5	17
▶ E958P	5	5	11
▶ E958R	6	5	13

**UL LISTED**  
E23018  
Except where noted by ▶

### PVC riser caps

Cat. No.	Size (in.)	Std. Ctn.	Std. Wt. (lbs.)
▶ E935J	2	25	3
▶ E935L	3	25	5
▶ E935N	4	25	7
▶ E935P	5	25	35
▶ E935R	6	10	7

