

# Single Gang:

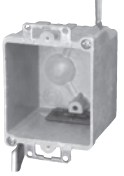
## Old Work/Manufactured Housing Boxes

### 9366-EK



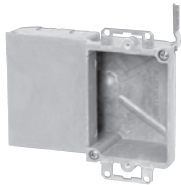
Cu. In. Volume	Catalog Number	Component Description	Outside Dimensions D	W	H	UPC# 85339	Std. Pkg. Qty.	Std. Pkg. Wt. (lb.)
18.0	9366-EK	Wide body box, ears, Speed Klamps™-factory installed	2-3/4	2-3/4	3-1/4	77003	100	32



### Series 9366-EW



Cu. In. Volume	Catalog Number	Component Description	Outside Dimensions D	W	H	UPC# 85339	Std. Pkg. Qty.	Std. Pkg. Wt. (lb.)
18.0	9366-EW	Wide body box, ears, wing brackets, Speed Klamps™-bulk packed	2-3/4	2-3/4	3-1/4	77001	100	34
18.0	9366-EWK*	Wide body box, ears, wing brackets, Speed Klamps™-factory installed	2-3/4	2-3/4	3-1/4	77002	100	35

### Series 9367



Cu. In. Volume	Catalog Number	Component Description	Outside Dimensions D	W	H	UPC# 85339	Std. Pkg. Qty.	Std. Pkg. Wt. (lb.)
16.0	9367-E	Side cube box, ears, UL® recognized 	1-11/16	2-3/8 open 4-15/16 overall	3-1/4	75600	50	16
16.0	9367-EW*	Side cube box, ears, wing brackets, UL® recognized 	1-11/16	2-3/8 open 4-15/16 overall	3-1/4	75601	50	17

### Series 9368-E



Cu. In. Volume	Catalog Number	Component Description	Outside Dimensions D	W	H	UPC# 85339	Std. Pkg. Qty.	Std. Pkg. Wt. (lb.)
18.0	9368-E	Ears, Speed Klamps™-bulk packed	3-3/16	2-3/8	3-1/4	76000	100	31
18.0	9368-EK*	Ears, Speed Klamps™-factory installed	3-3/16	2-3/8	3-1/4	76003	100	31

### Series 9368-EW



Cu. In. Volume	Catalog Number	Component Description	Outside Dimensions D	W	H	UPC# 85339	Std. Pkg. Qty.	Std. Pkg. Wt. (lb.)
18.0	9368-EW	Ears, wing brackets, Speed Klamps™-bulk packed	3-3/16	2-3/8	3-1/4	76002	100	33
18.0	9368-EWK*	Ears, wing brackets, Speed Klamps™-factory installed	3-3/16	2-3/8	3-1/4	76001	100	34

### P-1220W



Cu. In. Volume	Catalog Number	Component Description	D	W	H	UPC# 85339	Std. Pkg. Qty.	Std. Pkg. Wt. (lb.)
22.5	P-1220W	Flexbox® Single gang, ears, wing brackets, molded-in Speed Klamps™	3-3/4	2-19/64	3-11/16	24913	48	13

### Template



Cu. In. Volume	Catalog Number	Component Description	Outside Dimensions D	W	H	UPC# 85339	Std. Pkg. Qty.	Std. Pkg. Wt. (lb.)
-	1TP	Metal template for single gang old work box: 9331-E Series, 9363-E Series, 9368-E Series	-	-	-	88015	1	1

\* Indicates model shown • See page 7 for Attachment Coding descriptions

# Single Gang:

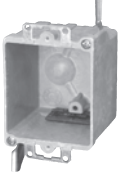
## Old Work/Manufactured Housing Boxes

### 9366-EK



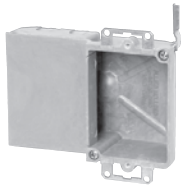
Cu. In. Volume	Catalog Number	Component Description	Outside Dimensions D	W	H	UPC# 85339	Std. Pkg. Qty.	Std. Pkg. Wt. (lb.)
18.0	9366-EK	Wide body box, ears, Speed Klamps™-factory installed	2-3/4	2-3/4	3-1/4	77003	100	32



### Series 9366-EW



Cu. In. Volume	Catalog Number	Component Description	Outside Dimensions D	W	H	UPC# 85339	Std. Pkg. Qty.	Std. Pkg. Wt. (lb.)
18.0	9366-EW	Wide body box, ears, wing brackets, Speed Klamps™-bulk packed	2-3/4	2-3/4	3-1/4	77001	100	34
18.0	9366-EWK*	Wide body box, ears, wing brackets, Speed Klamps™-factory installed	2-3/4	2-3/4	3-1/4	77002	100	35

### Series 9367



Cu. In. Volume	Catalog Number	Component Description	Outside Dimensions D	W	H	UPC# 85339	Std. Pkg. Qty.	Std. Pkg. Wt. (lb.)
16.0	9367-E	Side cube box, ears, UL® recognized 	1-11/16	2-3/8 open 4-15/16 overall	3-1/4	75600	50	16
16.0	9367-EW*	Side cube box, ears, wing brackets, UL® recognized 	1-11/16	2-3/8 open 4-15/16 overall	3-1/4	75601	50	17

### Series 9368-E



Cu. In. Volume	Catalog Number	Component Description	Outside Dimensions D	W	H	UPC# 85339	Std. Pkg. Qty.	Std. Pkg. Wt. (lb.)
18.0	9368-E	Ears, Speed Klamps™-bulk packed	3-3/16	2-3/8	3-1/4	76000	100	31
18.0	9368-EK*	Ears, Speed Klamps™-factory installed	3-3/16	2-3/8	3-1/4	76003	100	31

### Series 9368-EW



Cu. In. Volume	Catalog Number	Component Description	Outside Dimensions D	W	H	UPC# 85339	Std. Pkg. Qty.	Std. Pkg. Wt. (lb.)
18.0	9368-EW	Ears, wing brackets, Speed Klamps™-bulk packed	3-3/16	2-3/8	3-1/4	76002	100	33
18.0	9368-EWK*	Ears, wing brackets, Speed Klamps™-factory installed	3-3/16	2-3/8	3-1/4	76001	100	34

### P-1220W



Cu. In. Volume	Catalog Number	Component Description	D	W	H	UPC# 85339	Std. Pkg. Qty.	Std. Pkg. Wt. (lb.)
22.5	P-1220W	Flexbox® Single gang, ears, wing brackets, molded-in Speed Klamps™	3-3/4	2-19/64	3-11/16	24913	48	13

### Template



Cu. In. Volume	Catalog Number	Component Description	Outside Dimensions D	W	H	UPC# 85339	Std. Pkg. Qty.	Std. Pkg. Wt. (lb.)
-	1TP	Metal template for single gang old work box: 9331-E Series, 9363-E Series, 9368-E Series	-	-	-	88015	1	1

\* Indicates model shown • See page 7 for Attachment Coding descriptions