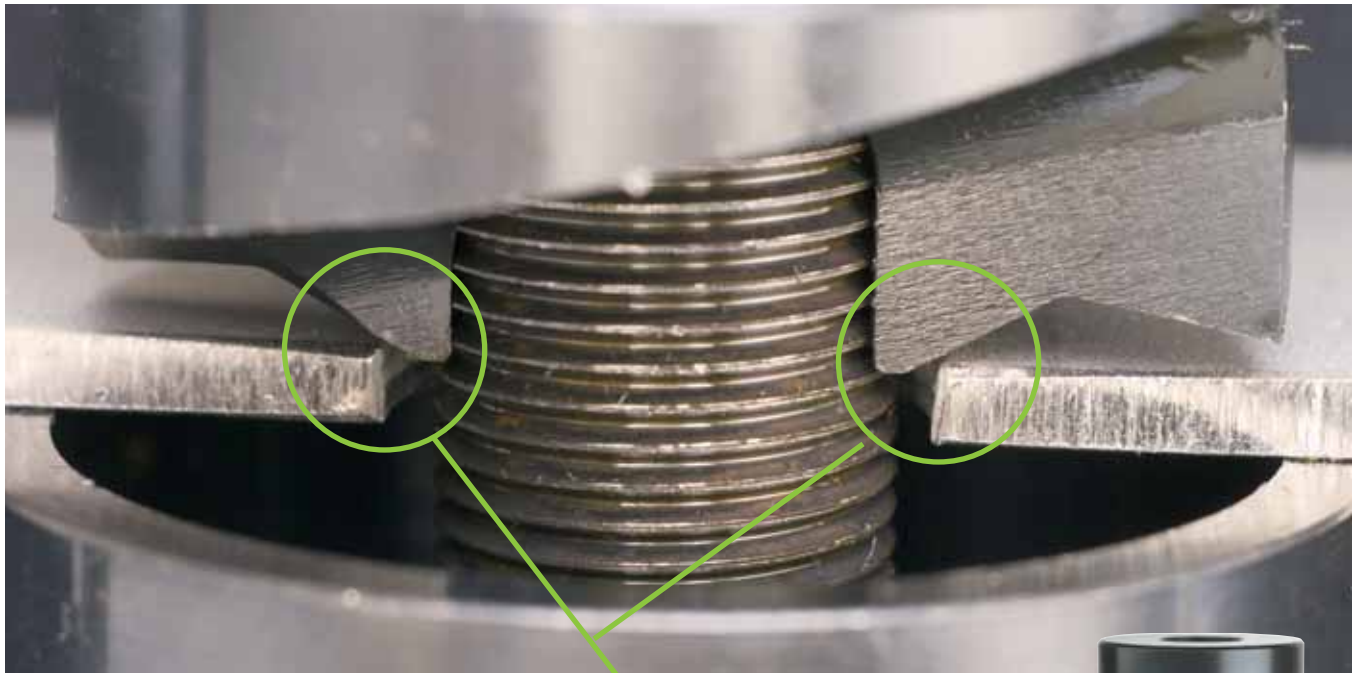


BULL'S EYE!



Chamfer self centers on pilot hole for perfect alignment every time.

SLUG-BUSTER SC[™]



You'll hit the mark every time with the Greenlee Slug-Buster SC[™]

Do a quality job in less time and with less potential for errors or alignment problems in mild steel— with the new Greenlee Slug-Buster SC[™] knockout.

What's different? A unique, patent-pending self-centering feature that makes centering the punch on a pilot hole faster and easier, reducing rework and scrap. Just tighten

down the punch on your draw stud and let our new punch center itself on the pilot hole. No more trying to line up the die alignment marks or drawing crosshairs on the box to ensure alignment. The Slug-Buster SC[™] is the fastest, easiest tool for punching holes that are perfectly on center with a pilot hole, reducing layout time, rework and scrap.

PRODUCT FEATURES

- **Save time and ensure accuracy!** Self-centering punch aligns itself on pilot hole.
- **No need to draw crosshairs** or line up die alignment marks.
- Unique, patent-pending punch profile also splits slugs for easier slug removal.



ORDERING INFORMATION

| PUNCH UNIT | | CONDUIT & PIPE SIZE | HOLE SIZE | | MILD STEEL | | WGT. | | PUNCH | | REPLACEMENT DIE | | REPLACEMENT DRAW STUD | | |
|------------|---------|---------------------|-----------|-------|------------|----|------|-----|----------|-------------|-----------------|---------|-----------------------|-----------|-------|
| CAT. NO. | UPC NO. | | INCH | mm | GA. | mm | LBS. | g | CAT. NO. | UPC NO. | CAT. NO. | UPC NO. | CAT. NO. | UPC NO. | |
| 77U-1/2 | 10801 | 1/2" | 7/8 | .885 | 22.2 | 10 | 3.5 | .3 | 137 | 77P-1/2 | 11361 | 14722 | 14722 | 00042 | 00042 |
| ◆ | | 1/2" | 7/8 | .885 | 22.2 | 10 | 3.5 | — | — | 77P-1/2P◆ | 11261 | 14722P◆ | 01992 | 00042 | 00042 |
| 77U-3/4 | 10802 | 3/4" | — | 1.115 | 28.3 | 10 | 3.5 | .8 | 363 | 77P-3/4 | 11362 | 124AV | 06972 | 294AVBB | 04040 |
| ◆ | | 3/4" | — | 1.115 | 28.3 | 10 | 3.5 | — | — | 77P-3/4P◆ | 11262 | 124AVP◆ | 01993 | 294AVBBP◆ | 01987 |
| 77U-1 | 10803 | 1" | — | 1.362 | 34.6 | 10 | 3.5 | 1 | 454 | 77P-1 | 11363 | 126AV | 04011 | 294AVBB | 04040 |
| ◆ | | 1" | — | 1.362 | 34.6 | 10 | 3.5 | — | — | 77P-1P◆ | 11263 | 126AVP◆ | 01994 | 294AVBBP◆ | 01987 |
| 10807◆ | 10807 | — | 1-7/32 | 1.21 | 30.5 | 10 | 3.5 | .9 | 408 | 11357 | 11357 | 3627B | 3627B | 294AVBB | 04040 |
| 77U-1-1/4 | 10804 | 1-1/4" | — | 1.701 | 43.2 | 10 | 3.5 | 1.3 | 590 | 77P-1-1/4 | 11364 | 128AV | 04013 | 294AVBB | 04040 |
| ◆ | | 1-1/4" | — | 1.701 | 43.2 | 10 | 3.5 | — | — | 77P-1-1/4P◆ | 11264 | 128AVP◆ | 01995 | 294AVBBP◆ | 01987 |
| 77U-1-1/2 | 10805 | 1-1/2" | — | 1.951 | 49.6 | 10 | 3.5 | 2.1 | 953 | 77P-1-1/2 | 11365 | 440AV | 04061 | 304AVBB | 04042 |
| ◆ | | 1-1/2" | — | 1.951 | 49.6 | 10 | 3.5 | — | — | 77P-1-1/2P◆ | 11265 | 440AVP◆ | 01996 | 304AVBBP◆ | 01988 |
| 77U-2 | 10806 | 2" | 2-3/8 | 2.416 | 61.4 | 10 | 3.5 | 2.3 | 1043 | 77P-2 | 11366 | 442AV | 04063 | 304AVBB | 04042 |
| ◆ | | 2" | 2-3/8 | 2.416 | 61.4 | 10 | 3.5 | — | — | 77P-2P◆ | 11266 | 442AVP◆ | 01997 | 304AVBBP◆ | 01988 |
| 10800 | 10800 | 1/2"-2" kit | | | | | | | | | | | | | |

◆ **POP Packaged**

DISTRIBUTED BY



GREENLEE®

A Textron Company

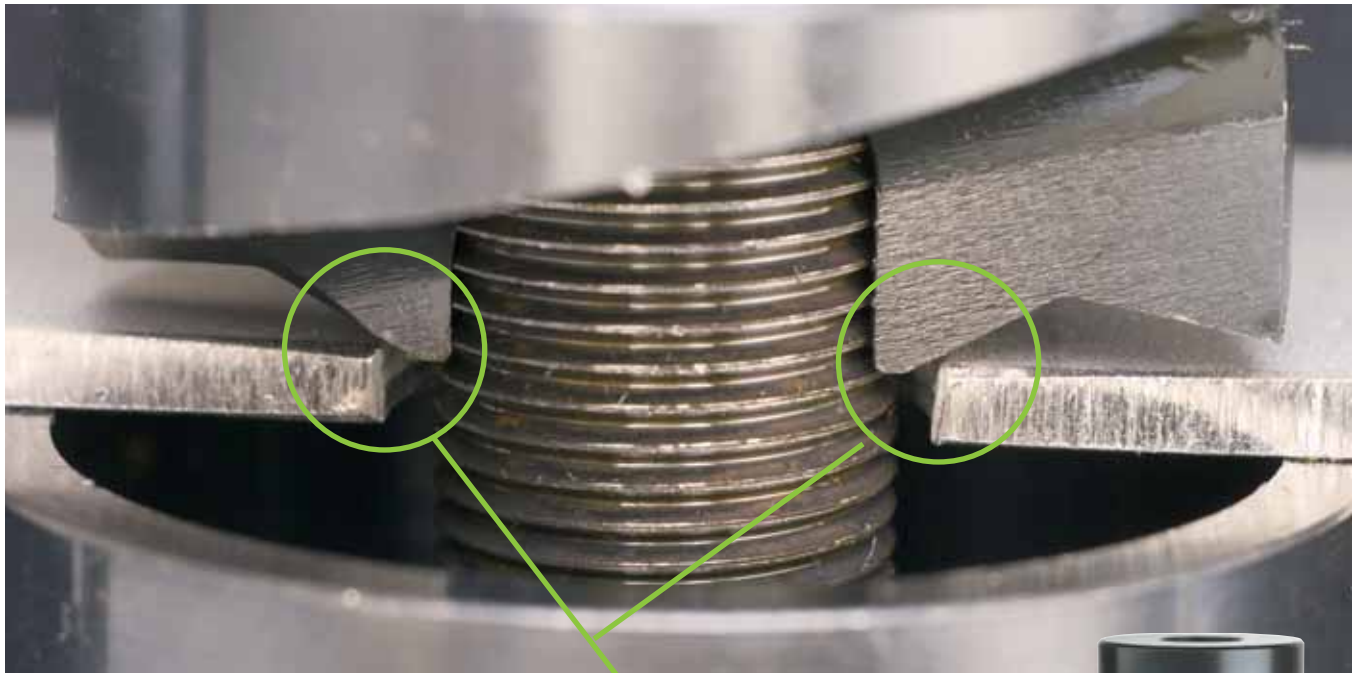
USA 800-435-0786 Fax: 800-451-2632
 815-397-7070 Fax: 815-397-1865
 Canada 800-435-0786 Fax: 800-524-2853
 International +1-815-397-7070 Fax: +1-815-397-9247

4455 Boeing Drive • Rockford, IL 61109-2988 • USA • 815-397-7070
 ©2004 Greenlee Textron Inc. • An ISO 9001 Company • Printed in USA
 Greenlee Textron Inc. is a subsidiary of Textron Inc.

www.greenlee.com

MA-4556 rev09/04

BULL'S EYE!



Chamfer self centers on pilot hole for perfect alignment every time.

SLUG-BUSTER SC[™]



You'll hit the mark every time with the Greenlee Slug-Buster SC[™]

Do a quality job in less time and with less potential for errors or alignment problems in mild steel— with the new Greenlee Slug-Buster SC[™] knockout.

What's different? A unique, patent-pending self-centering feature that makes centering the punch on a pilot hole faster and easier, reducing rework and scrap. Just tighten

down the punch on your draw stud and let our new punch center itself on the pilot hole. No more trying to line up the die alignment marks or drawing crosshairs on the box to ensure alignment. The Slug-Buster SC[™] is the fastest, easiest tool for punching holes that are perfectly on center with a pilot hole, reducing layout time, rework and scrap.

PRODUCT FEATURES

- **Save time and ensure accuracy!** Self-centering punch aligns itself on pilot hole.
- **No need to draw crosshairs** or line up die alignment marks.
- Unique, patent-pending punch profile also splits slugs for easier slug removal.



ORDERING INFORMATION

| PUNCH UNIT | | CONDUIT & PIPE SIZE | HOLE SIZE | | MILD STEEL | | WGT. | | PUNCH | | REPLACEMENT DIE | | REPLACEMENT DRAW STUD | | |
|------------|---------|---------------------|-----------|-------|------------|----|------|-----|----------|-------------|-----------------|---------|-----------------------|-----------|-------|
| CAT. NO. | UPC NO. | | INCH | mm | GA. | mm | LBS. | g | CAT. NO. | UPC NO. | CAT. NO. | UPC NO. | CAT. NO. | UPC NO. | |
| 77U-1/2 | 10801 | 1/2" | 7/8 | .885 | 22.2 | 10 | 3.5 | .3 | 137 | 77P-1/2 | 11361 | 14722 | 14722 | 00042 | 00042 |
| ◆ | | 1/2" | 7/8 | .885 | 22.2 | 10 | 3.5 | — | — | 77P-1/2P◆ | 11261 | 14722P◆ | 01992 | 00042 | 00042 |
| 77U-3/4 | 10802 | 3/4" | — | 1.115 | 28.3 | 10 | 3.5 | .8 | 363 | 77P-3/4 | 11362 | 124AV | 06972 | 294AVBB | 04040 |
| ◆ | | 3/4" | — | 1.115 | 28.3 | 10 | 3.5 | — | — | 77P-3/4P◆ | 11262 | 124AVP◆ | 01993 | 294AVBBP◆ | 01987 |
| 77U-1 | 10803 | 1" | — | 1.362 | 34.6 | 10 | 3.5 | 1 | 454 | 77P-1 | 11363 | 126AV | 04011 | 294AVBB | 04040 |
| ◆ | | 1" | — | 1.362 | 34.6 | 10 | 3.5 | — | — | 77P-1P◆ | 11263 | 126AVP◆ | 01994 | 294AVBBP◆ | 01987 |
| 10807◆ | 10807 | — | 1-7/32 | 1.21 | 30.5 | 10 | 3.5 | .9 | 408 | 11357 | 11357 | 3627B | 3627B | 294AVBB | 04040 |
| 77U-1-1/4 | 10804 | 1-1/4" | — | 1.701 | 43.2 | 10 | 3.5 | 1.3 | 590 | 77P-1-1/4 | 11364 | 128AV | 04013 | 294AVBB | 04040 |
| ◆ | | 1-1/4" | — | 1.701 | 43.2 | 10 | 3.5 | — | — | 77P-1-1/4P◆ | 11264 | 128AVP◆ | 01995 | 294AVBBP◆ | 01987 |
| 77U-1-1/2 | 10805 | 1-1/2" | — | 1.951 | 49.6 | 10 | 3.5 | 2.1 | 953 | 77P-1-1/2 | 11365 | 440AV | 04061 | 304AVBB | 04042 |
| ◆ | | 1-1/2" | — | 1.951 | 49.6 | 10 | 3.5 | — | — | 77P-1-1/2P◆ | 11265 | 440AVP◆ | 01996 | 304AVBBP◆ | 01988 |
| 77U-2 | 10806 | 2" | 2-3/8 | 2.416 | 61.4 | 10 | 3.5 | 2.3 | 1043 | 77P-2 | 11366 | 442AV | 04063 | 304AVBB | 04042 |
| ◆ | | 2" | 2-3/8 | 2.416 | 61.4 | 10 | 3.5 | — | — | 77P-2P◆ | 11266 | 442AVP◆ | 01997 | 304AVBBP◆ | 01988 |
| 10800 | 10800 | 1/2"-2" kit | | | | | | | | | | | | | |

◆ **POP Packaged**

DISTRIBUTED BY



GREENLEE®

A Textron Company

USA 800-435-0786 Fax: 800-451-2632
 815-397-7070 Fax: 815-397-1865
 Canada 800-435-0786 Fax: 800-524-2853
 International +1-815-397-7070 Fax: +1-815-397-9247

4455 Boeing Drive • Rockford, IL 61109-2988 • USA • 815-397-7070
 ©2004 Greenlee Textron Inc. • An ISO 9001 Company • Printed in USA
 Greenlee Textron Inc. is a subsidiary of Textron Inc.

www.greenlee.com

MA-4556 rev09/04