

**Commercial Specification
Grade AC Decorator
Combination Switches**

15A, 120/277V/AC
Single-Pole, 3-Way

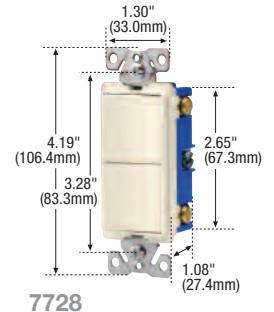
15A Decorator Combination Switches

**Combination Switches,
Back & Side Wire**

15A,
120/277V



Description	Catalog No. Color Suffix
Two Single-Pole Switches	<input type="checkbox"/> 7728 A, BK, LA, V, W
Three Single-Pole Switches	<input type="checkbox"/> 7729 A, BK, LA, V, W
Two 3-Way Switches	<input type="checkbox"/> 7731 A, BK, LA, V, W
One Single-Pole Switch with One 3-Way Switch	<input type="checkbox"/> 7732 A, BK, LA, V, W

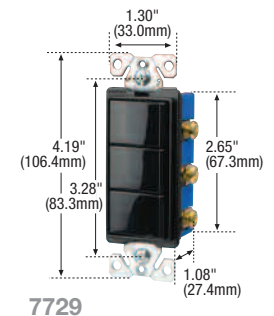


**Switch with Receptacle,
Back & Side Wire**

15A, 120/277V Switch,
15A, 125V Receptacle

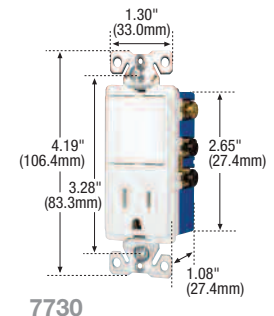


Description	Catalog No. Color Suffix
One Single-Pole Switch with NEMA 5-15 2-Pole, 3-Wire Receptacle	<input type="checkbox"/> 7730 A, BK, LA, V, W



Color Ordering Information

For ordering devices, include Cat. No. followed by the color code: A (Almond), B (Brown), BK (Black), BL (Blue), GY (Gray), LA (Light Almond), RD (Red), RN (Orange), V (Ivory), W (White)



Icon Key

NAFTA Compliant - see page O-30

Accessories for Commercial Specification Grade Decorator Combination Switches

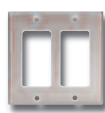
Description	Catalog No.	
1-Gang, standard size, decorator, 302/304 stainless steel wallplate, REPEL™	<input type="checkbox"/> 93401AM	•
1-Gang, standard size, decorator, unbreakable nylon wallplate, white	<input type="checkbox"/> 5151W	•
2-Gang, standard size, decorator, 302/304 stainless steel wallplate	<input type="checkbox"/> 93402	•
1-Gang, weather protective plastic self-closing decorator cover	<input type="checkbox"/> S2966	•
1-Gang, weather protective metal self-closing decorator cover	<input type="checkbox"/> S1966	•



93401AM



5151W



93402



S2966



S1966

**Specification & HP Rating
Information:**

120/277V Commercial
Decorator Combination: D-36

**Commercial
Specification Grade
Decorator Switches**

**15A & 20A 120/277V/AC
15A, 120/277V/AC with 15A, 125V/AC Receptacle
Single-Pole, Double-Pole, 3-Way, 4-Way**

	Switch Type	Commercial 15A & 20A 120/277V Decorator Switches 7600 Series	Commercial 15A 120/277V Decorator Combination Switches 7700 Series	Commercial 15A 120/277V - 15A, 125V Decorator Combination Switch & Receptacle, 7730
	Wiring Type	Back & side wire	Back & side wire	Back & side wire
	Testing & Code Compliance	<ul style="list-style-type: none"> cULus Listed to UL 20, file no. E18704 UL verified to Federal Spec. WC-896E 	<ul style="list-style-type: none"> cULus Listed to UL 20/UL 498, file no. E18704 (combination) 	<ul style="list-style-type: none"> cULus Listed to UL 20/UL 498, file no. E18704 (combination)
Specifications: Environmental	Flammability	Meets UL 94 requirements; V2 rated	Meets UL 94 requirements; V2 rated	Meets UL 94 requirements; V2 rated
	Temperature Rating	-20°C to 60°C (-4°F to 140°F)	-20°C to 60°C (-4°F to 140°F)	-20°C to 60°C (-4°F to 140°F)
Specifications: Electrical	Dielectric Voltage	Withstands 1500V per UL 20	Withstands 1500V per UL 20	Withstands 1500V per UL 20
	Current Interrupting	Yes, at full-rated current	Yes, at full-rated current	Yes, at full-rated current
	Temperature Rise	Max. 30°C (86°F) after 100 cycles of overload and 30,000 cycles of endurance testing	Max. 30°C (86°F) after 100 cycles of overload and 30,000 cycles of endurance testing	Switch: Max. 30°C (86°F) after 100 cycles of overload and 30,000 cycles of endurance testing Receptacle: Max. 30°C (86°F) after 100 cycles of overload at 150% of rated current (DC)
Specifications: Mechanical	Terminal Accommodation	#14 - 10 AWG	#14 - 10 AWG	#14 - 12 AWG
	Voltage Ratings	Permanently marked on device	Permanently marked on device	Permanently marked on device
	Horsepower Ratings	Rated for motor loads per UL 20: 15A: @ 120V/AC = 1/2 HP, @ 240V/AC = 2 HP; Max. amps 12A 20A: @ 120V/AC = 1 HP, @ 240V/AC = 2 HP; Max. amps 16A	Rated for motor loads per UL 20: 15A: @ 120V/AC = 1/2 HP, @ 240V/AC = 2 HP; Max. amps 12A	Switch rated for motor loads per UL 20: 15A: @ 120V/AC = 1/2 HP, @ 240V/AC = 2 HP; Max. amps 12A
Materials:	Paddle	Polycarbonate	PVC	PVC
	Top Housing	Polycarbonate	PVC	PVC
	Bottom Housing	PVC	PVC	PVC
	Strap	0.045" thick steel, zinc plated, (yellow chromate on 20A)	0.045" thick steel, zinc plated	0.045" thick steel, zinc plated
	Auto Ground Clip	Phosphor bronze	Phosphor bronze	Phosphor bronze
	Terminals	0.035" thick brass	0.030" thick brass	0.030" thick brass
	Terminal Screws	#8-32 steel with #10 head, brass plated; neutral screw nickel plated	#8-32 steel, brass plated; neutral screw nickel plated	#8-32 steel, brass plated; neutral screw nickel plated
	Ground Screw	#8-32 steel, brass plated, green	#8-32 steel, brass plated, green	#8-32 steel, brass plated, green
	Backwire Clamp	Steel, brass plated	Brass	Brass
	Contacts	Silver alloy	Silver alloy	Silver alloy
	Moveable Contact Arm	Brass	Brass	Brass
	Pressure Plate	Brass	N/A	N/A
	Illuminated Models	Long-life neon bulb	N/A	N/A
	Pilot Light Models	Red lexan pilot lens with long-life neon bulb	N/A	N/A
Receptacle Line Contacts	N/A	N/A	0.030" thick brass	
Receptacle Ground Shunt	N/A	N/A	0.030" thick brass	