

# SNAP<sup>2</sup>IT<sup>®</sup> MC Cable Connectors

Largest Line. Widest Cable Ranges. Fastest Installation.



**SAVE 17 seconds**  
per connector

**LISTED SNAP<sup>2</sup>IT<sup>®</sup> CONNECTORS FOR NEW MC-PCS and MC-PCS HCF CABLE ...lighting & low voltage circuits in same cable**

4010AST  
1/2" KO

5010AST  
1/2" KO

4110ST

414110ST

505010AST  
3/4" KO

Arlington's zinc diecast SNAP<sup>2</sup>IT<sup>®</sup> fittings are the *easiest to insert* snap-on connectors. And they handle the widest variety of cables!

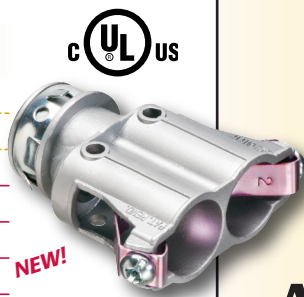
- **Easiest installation**  
New and improved design delivers the easiest cable insertion.
- **Widest total cable ranges**  
Our Snap<sup>2</sup>It<sup>®</sup> connector line accommodates cables from 1/4" to 3/4".
- **Widest variety of cables**  
For AC, MC, HCF, MC continuous corrugated aluminum cable, MCI-A cables (steel and aluminum), AC90 and ACG90.

**These Snap2It connectors fit the NEW MC-PCS and MC-PCS HCF CABLE (lighting and low voltage circuits in same cable) and offer the GREATEST TIME-SAVINGS.**

- Super-secure installation in new work or retrofit
- Connector is removable, reusable
- Fully assembled – Ready to use
- Concrete-tight when taped

**Easiest cable insertion. NO TOOLS! Secure hold.**

CATALOG NUMBER	UPC/DCI/NAED MFG #01 8997	DESCRIPTION	CABLE OUTSIDE DIA (OD)	UNIT/STD PKG
4010AST	40355	Snap in, 1/2" KO w insulated throat	.405 to .610	50/500
5010AST	00517	Snap in, 1/2" KO w insulated throat	.580 to .780	25/250
505010AST	50720	Duplex Snap in, 3/4" KO w insulated throat	(2) .590 to .820	25/25
4110ST	00728	Snap in, 1/2" KO	.525 to .705	50/500
414110ST	00729	Duplex Snap in, 1/2" KO	(2) .525 to .640	25/100
4141107ST	22095	Duplex Snap in, 3/4" KO	(2) .525 to .690	25/25



4141107ST



**Arlington**  
www.aifittings.com

# SNAP2IT<sup>®</sup> MC Cable Connectors



*Largest Line. Widest Cable Ranges. Fastest Installation.*

## Snap2It Connectors with Insulated Throat and Angled Two-prong Clip

Our 3810AST through 7510AST SNAP2IT<sup>®</sup> connectors install just as fast and cost the same as our other Snap2It fittings, but **cable insertion is even easier!**

- **Easy installation** snap cable into fitting – assembly into box...No tools!
- Angled clip locks onto MC cable – No pullout
- **Removal, reusable**  
From cable: Loosen screw on top of connector. Pull cable out.  
From box: Slip screwdriver under Snap-Tite ring and twist (photo on back).



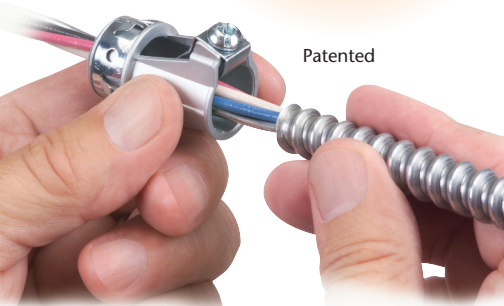
### 4010AST Exploded View/Components

- Screw holds clip permanently in place – Loosen to remove cable
- Angled, two-prong clip locks down on cable, holding it securely in place



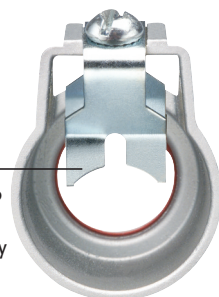
Insulated throat

Patented



### 7510AST Back view

- Angled, heavy-duty two-prong clip holds large cables securely in place



LARGER SIZES

CATALOG NUMBER	UPC/DCI/NAED MFG. #01 8997	CABLE (OD) OUTSIDE DIAMETER	CABLE TYPE	CABLE SIZES	UNIT PKG	STD PKG
3810AST	00385	.370 to .510	For steel and aluminum: MC/HCF/AC <b>NEW</b> MC-PCS MCI-A	14/2 and 12/2 with and w/o ground; 14/3 and 12/3	50	500
		.370 to .510	AC90, ACG90	14/2, 14/3, 12/2, 12/3	25	100
383810AST Duplex	10937		Flexible metal conduit	3/8" Flex* .560 to .610		
4010AST	40355	.405 to .610	For steel and aluminum: MC/HCF/AC <b>NEW</b> MC-PCS	14/2, 14/3, 14/4, 12/2, 12/3, 12/4,	50	500
		.405 to .580	MCI-A	10/2, 10/3	25	100
		.405 to .610	AC90, ACG90			
404010AST Duplex	40533		Flexible metal conduit	3/8" Flex* .560 to .610		
5010AST 1/2" KO	00517	.580 to .780	For steel and aluminum: MC/HCF/AC <b>NEW</b> MC-PCS	10/3, 10/4, 8/2, 8/3, 8/4 6/2, 6/3	25	250
		.610 to .780	MCI-A		25	25
		.550 to .850	AC90, ACG90	10/3, 10/4, 8/2, 8/3		
505010AST Duplex 3/4" KO	50720		Flexible metal conduit	1/2" Flex* .590 to .820		
7510AST 3/4" KO	55090	.895 to 1.035	For steel and aluminum: MC/HCF/AC MCI-A	8/4, 6/4, 6/3	25	25
		.900 to .970	AC90	6/3, 4/4, 4/3, 3/3	25	25
			Flexible metal conduit	3/4" Flex* 1.045 to 1.035		

Check that the cable's outer diameter (OD) listed by the cable manufacturer is within the OD cable range listed for the fitting. The cable jacket should never be able to go through the end stop (of fitting.) \*CSA Listed w/ anti-short bushing ONLY



# Single (Straight & 90 degree) • Duplex

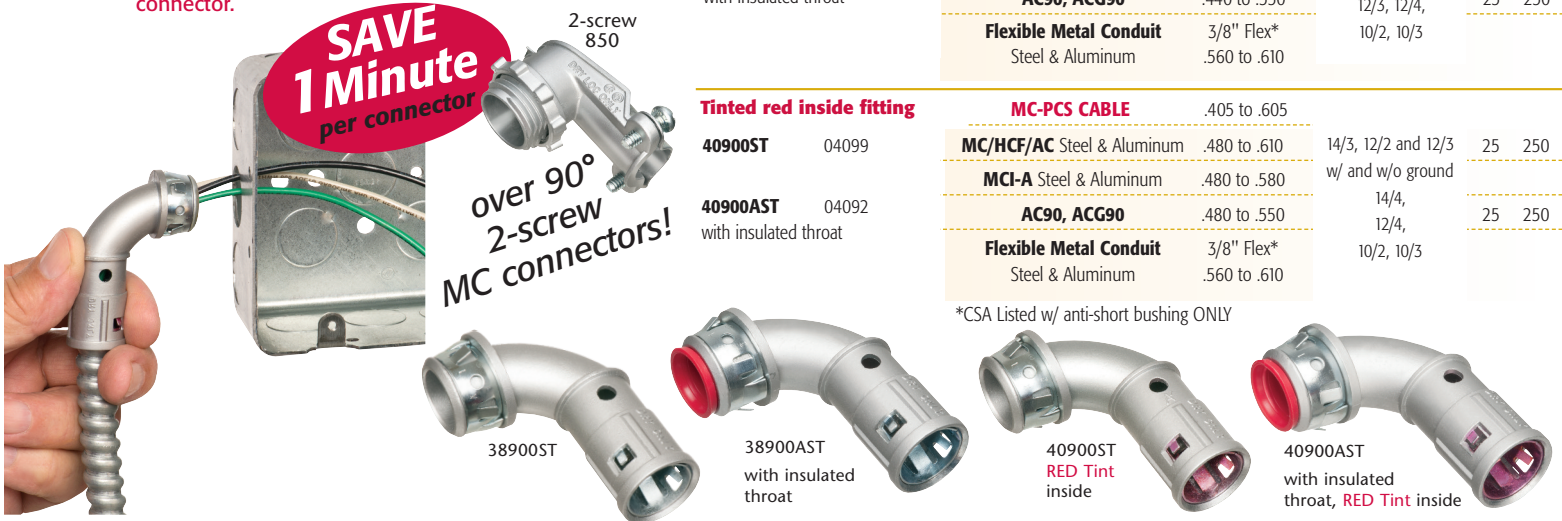
for New Work and Retrofit

## 90 Degree Snap2It® Connectors

Arlington's snap in connectors save time by eliminating the multiple steps required for a 90 degree 2-screw connector. **And they COST THE SAME AS A TWO-SCREW, 90 degree connector.**

**SAVE 1 Minute per connector**

2-screw 850  
over 90° 2-screw MC connectors!



CATALOG NUMBER	UPC/DCI/NAED MFG #01 8997	CABLE TYPE	CABLE (OD) OUTSIDE DIAMETER	CABLE SIZES	UNIT PKG	STD PKG
38900ST	04098	MC-PCS CABLE	.440 to .610			
		MC/HCF/AC Steel & Aluminum	.440 to .610	14/2 and 12/2 w/ and w/o ground	25	250
38900AST with insulated throat	04093	MCI-A Steel & Aluminum	.440 to .550	14/3, 14/4, 12/3, 12/4, 10/2, 10/3	25	250
		AC90, ACG90	.440 to .550			
		Flexible Metal Conduit Steel & Aluminum	3/8" Flex* .560 to .610			

CATALOG NUMBER	UPC/DCI/NAED MFG #01 8997	CABLE TYPE	CABLE (OD) OUTSIDE DIAMETER	CABLE SIZES	UNIT PKG	STD PKG
40900ST	04099	MC-PCS CABLE	.405 to .605			
		MC/HCF/AC Steel & Aluminum	.480 to .610	14/3, 12/2 and 12/3 w/ and w/o ground	25	250
40900AST with insulated throat	04092	MCI-A Steel & Aluminum	.480 to .580	14/4, 12/4, 10/2, 10/3	25	250
		AC90, ACG90	.480 to .550			
		Flexible Metal Conduit Steel & Aluminum	3/8" Flex* .560 to .610			

\*CSA Listed w/ anti-short bushing ONLY

## for use in INSTALLED BOXES • RETROFIT

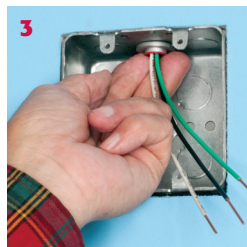


1  
Pull MC cable through knockout in INSTALLED old work box.

Snap fitting onto cable.



2  
Push assembly into box...



3  
...snap it into the box. Fast and easy. No tools required!

Arlington's one-piece **RETROFIT SNAP<sup>2</sup>IT<sup>®</sup>** fittings are *easy to use in OLD WORK installations*. They're ideal for adding additional circuits to a load center. And you get the same time-savings in a retrofit installation as you do in new work!

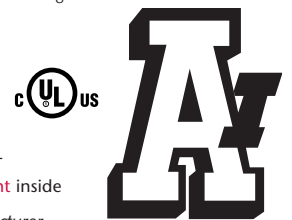
Quick, easy installation – NO TOOLS required.

CATALOG NUMBER	UPC/DCI/NAED MFG #01 8997	CABLE TYPE	CABLE (OD) OUTSIDE DIA	CABLE SIZES	UNIT/STD PKG
38RAST with insulated throat	13586	MC/HCF/AC Steel & Aluminum	.405 to .605	14/2 and 12/2 w/ and w/o ground	25/25
		MCI-A Steel & Aluminum	.440 to .550	14/3, 14/4, 12/3, 12/4, 10/2, 10/3	
		AC90, ACG90	.440 to .550		
		Flexible Metal Conduit Steel & Aluminum	3/8" Flex* .405 to .605		
40RAST with insulated throat Tinted RED inside fitting	13587	MC/HCF/AC Steel & Aluminum	.485 to .610	14/3, 12/2 and 12/3 w/ and w/o ground	25/25
		MCI-A Steel & Aluminum	.480 to .610	14/4, 12/4, 10/2, 10/3	
		AC90, ACG90	.480 to .550		
		Flexible Metal Conduit Steel & Aluminum	3/8" Flex* .405 to .610		

\*CSA Listed w/ anti-short bushing ONLY



Check that the cable's outer diameter (OD) listed by the cable manufacturer is within the OD cable range listed for the fitting. The cable jacket should never be able to go through the end stop (of fitting).



**Arlington**  
www.aifittings.com

# SNAP<sup>2</sup>IT<sup>®</sup> MC Cable Connectors

for *NEW WORK*

## Snap2It<sup>®</sup> Connectors

Designed for new construction, this SNAP<sup>2</sup>IT<sup>®</sup> series offers quick, easy snap-in installation into cable and into box. NO TOOLS required.

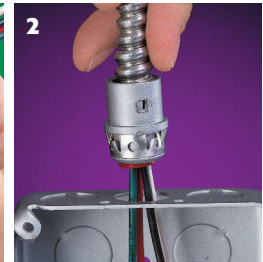
**SAVE 17 seconds**  
per connector

CATALOG NUMBER	UPC/DCI/NAED MFG #01 8997	CABLE TYPE	CABLE (OD) OUTSIDE DIA	CABLE SIZES	UNIT/STD PKG
<b>* WITH INSULATED THROAT</b>					
<b>38AST *</b>	00070	<b>MC/HCF/AC</b> Steel & Aluminum	.405 to .605	14/2 and 12/2	50/500
<b>38OST</b>	00381	<b>MCI-A</b> Steel & Aluminum	.405 to .605	w/ and w/o ground	50/500
<b>380AST *</b>	00382	<b>AC90, ACG90</b>	.405 to .605	14/3, 14/4, 12/3, 12/4,	50/500
<b>3838AST*</b> Duplex	36230	<b>Flexible Metal Conduit</b> Steel & Aluminum (RWFMC)	3/8" Flex** .405 to .605	10/2, 10/3	25/100
<b>WITH INSULATED THROAT, TINTED RED INSIDE OPEN TANG DESIGN</b>					
<b>40AST</b>	00041	<b>MC/HCF/AC</b> Steel & Aluminum	.485 to .610	14/3, 12/2 and 12/3	50/500
<b>400AST</b>	40347	<b>MCI-A</b> Aluminum	.485 to .610	w/ and w/o ground	50/500
<b>4040AST*</b> Duplex	40351	<b>AC90, ACG90</b>	.485 to .610	14/4, 12/4,	25/100
		<b>Flexible Metal Conduit</b> Steel & Aluminum	3/8" Flex** .485 to .610	10/2, 10/3	

\*\*Flex CSA Listed w/ anti-short bushing ONLY



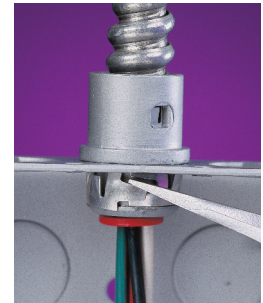
1 Snap fitting onto cable... twist clockwise



2 ...snap assembly into the box!

## EASY TO INSTALL

**EASY TO REMOVE and REUSE...**



To remove from box, lift Snap-Tite<sup>®</sup> ring with a screwdriver and twist off.

## PRODUCT COMPARISON



38AST

40AST

**RED TINT inside means OPEN TANG Design**

More room inside for easy insertion of wires...redesigned snap ring makes it easier than ever to snap fitting into box



38AST



40AST



Check that the cable's outer diameter (OD) listed by the cable manufacturer is within the OD cable range listed for the fitting. The cable jacket should never be able to go through the end stop (of fitting).

## Arlington

1 Stauffer Industrial Park  
Scranton, PA 18517  
800/233.4717  
Fax 570/562.0646  
www.aifittings.com

Patented ©2015 Arlington Industries Inc. REV0318 50M

Distributed by