



Catalog Number: 66120-GSC1-NK
Item Description: N1 SCREW CVR GUTTER NK
UPC Code: 784572107793

Brand Name: Milbank
Type: Lay In Wireway
Application: Wireway
Standard: UL Listed, Type 1
Cover Type: Screw Cover
Enclosure: Indoor Enclosure
Nominal Cross Section: 6x6
Straight Section Length: 120
Material: Steel with Powder Coat Finish
Finish: ANSI 61 Gray
Knockouts: False



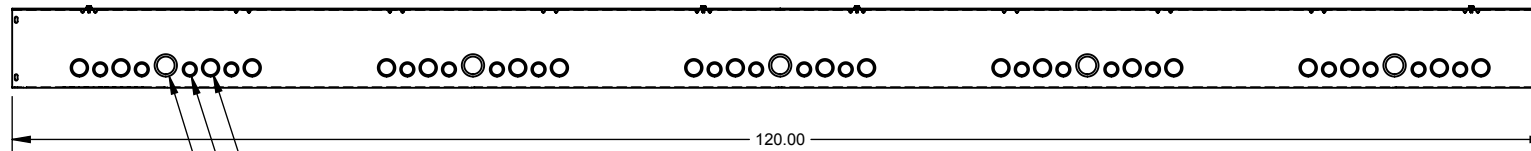
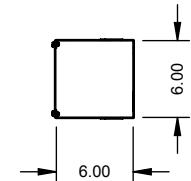
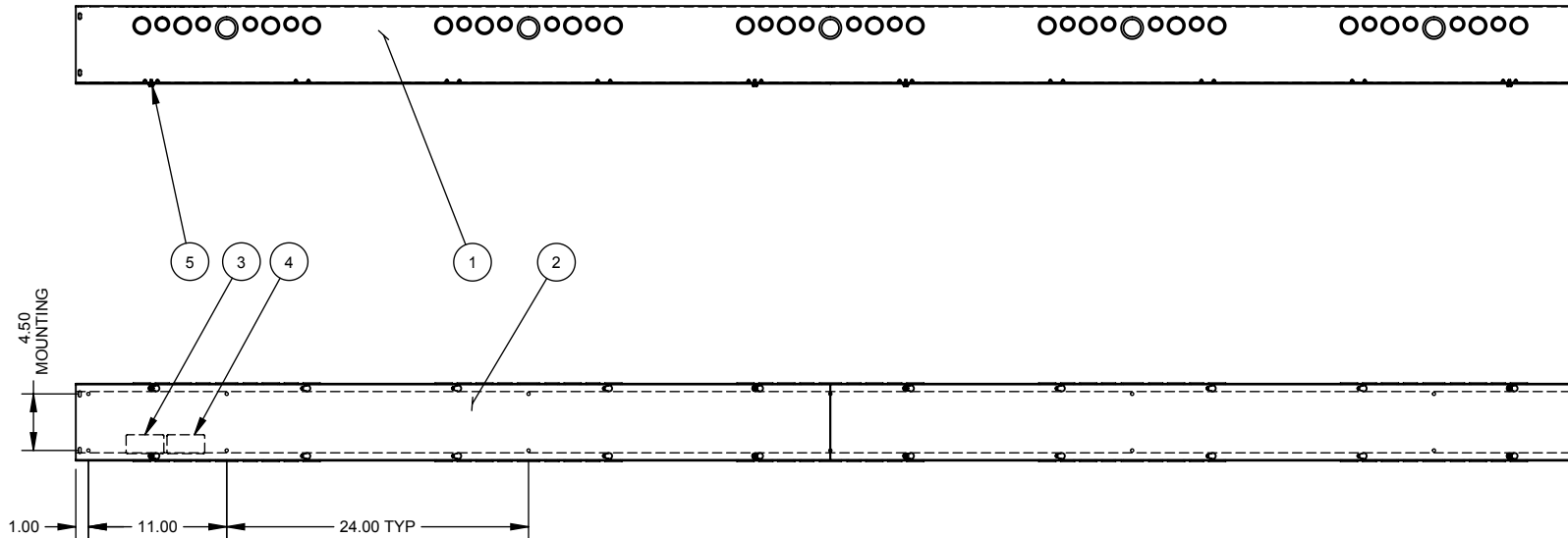
Utility requirements may vary. Always consult the serving utility for their requirements prior to ordering or installing this equipment. This product must always be installed by a licensed electrician. Installation of this equipment may require local electrical inspector approval.

CATALOG#	LABEL#
66120-GSC1-()	1002943
RC-66120-GSC1-()	1125051
SPS-6610()	1132575

SUFFIX	BACK #	COVER #
-SU	1001447	1003281
-SUC	1128954	1128931
-SO	1128955	1011779
-SUNK	1001417	1003281
-NK	1098478	1011779
-SUNKC	1128956	1128931


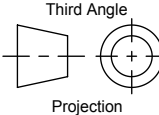
SUFFIX	FINISH
NONE	PAINTED
-NP	NOT PAINTED

ITEM NO.	QTY.	PART NUMBER	DESCRIPTION
1	1	(SEE CHART)	BACK
2	2	(SEE CHART)	PLATE/COVER
3	1	(SEE CHART)	LABEL (U/L LISTING)
4	1	1002942	LABEL, RATING
5	8	1001290	SCREW, 10-32 X 5/16
6	4	1002880	BAG ASSY.



- 3/4, 1 CONC. K.O.
40 PL
- 1/2, 3/4 CONC. K.O.
40 PL
- 1, 1-1/4 CONC. K.O.
10 PL

NOTE:
1. PLACE BAG ASS'Y INSIDE ENCLOSURE. (NOT SHOWN)

Material:	16 GA. - SEE CHART	 General Offices: Kansas City, MO	
Finish:	SEE CHART		
Tolerances: Unless Specified Otherwise X.X ±.1 X.XX ±.03 X.XXX ±.015 X° ±2°		Title:	SCREW COVER WIREWAY 6 x 6 x 120, TYPE 1 NEMA ENCLOSURE
 Third Angle Projection		Catalog No.:	(SEE CHART)
		Customer:	MILBANK STANDARD
		Drawing No.:	549-11
Scale:	NTS	Checked By:	
Drawn By:	DY	Approved By:	
Date:	05/24/02	Sheet	1 of 1

E	8-29-07	ADDED BACK & COVER CHART ECO. 15946	DL	F	8/25/08	1001290 QTY. WAS 9 (MECO #17608)	EB
E1	5/1/08	ADDED CHART & REMOVED NOTE #2(ECO.17139)	JLT				



Catalog Number: 66120-GSC1-NK
Item Description: N1 SCREW CVR GUTTER NK
UPC Code: 784572107793

Brand Name: Milbank
Type: Lay In Wireway
Application: Wireway
Standard: UL Listed, Type 1
Cover Type: Screw Cover
Enclosure: Indoor Enclosure
Nominal Cross Section: 6x6
Straight Section Length: 120
Material: Steel with Powder Coat Finish
Finish: ANSI 61 Gray
Knockouts: False



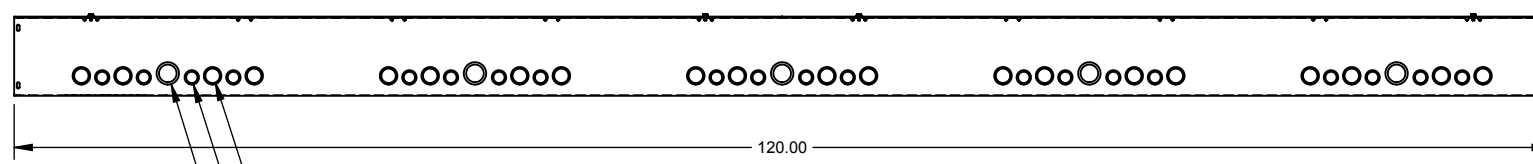
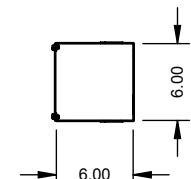
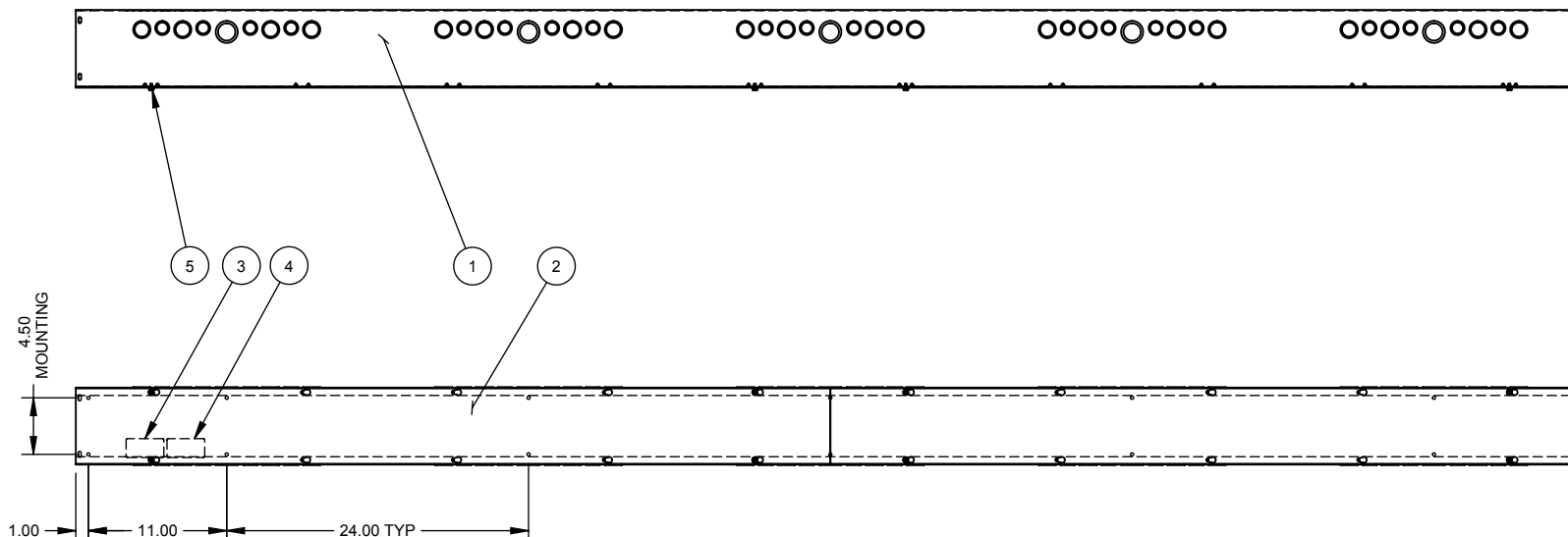
Utility requirements may vary. Always consult the serving utility for their requirements prior to ordering or installing this equipment. This product must always be installed by a licensed electrician. Installation of this equipment may require local electrical inspector approval.

CATALOG#	LABEL#
66120-GSC1-()	1002943
RC-66120-GSC1-()	1125051
SPS-6610()	1132575

SUFFIX	BACK #	COVER #
-SU	1001447	1003281
-SUC	1128954	1128931
-SO	1128955	1011779
-SUNK	1001417	1003281
-NK	1098478	1011779
-SUNKC	1128956	1128931


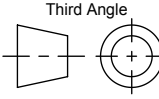
SUFFIX	FINISH
NONE	PAINTED
-NP	NOT PAINTED

ITEM NO.	QTY.	PART NUMBER	DESCRIPTION
1	1	(SEE CHART)	BACK
2	2	(SEE CHART)	PLATE/COVER
3	1	(SEE CHART)	LABEL (U/L LISTING)
4	1	1002942	LABEL, RATING
5	8	1001290	SCREW, 10-32 X 5/16
6	4	1002880	BAG ASSY.



- 3/4, 1 CONC. K.O.
40 PL
- 1/2, 3/4 CONC. K.O.
40 PL
- 1, 1-1/4 CONC. K.O.
10 PL

NOTE:
1. PLACE BAG ASS'Y INSIDE ENCLOSURE. (NOT SHOWN)

Material:	16 GA. - SEE CHART	 General Offices: Kansas City, MO
Finish:	SEE CHART	
Tolerances: Unless Specified Otherwise X.X ±.1 X.XX ±.03 X.XXX ±.015 X° ±2°		Title: SCREW COVER WIREWAY 6 x 6 x 120, TYPE 1 NEMA ENCLOSURE
Third Angle  Projection		Catalog No.: (SEE CHART)
		Customer: MILBANK STANDARD
		Drawing No.: 549-11
Scale:	NTS	Date: 05/24/02
Drawn By:	DY	Sheet 1 of 1

E	8-29-07	ADDED BACK & COVER CHART ECO. 15946	DL	F	8/25/08	1001290 QTY. WAS 9 (MECO #17608)	EB
E1	5/1/08	ADDED CHART & REMOVED NOTE #2(ECO.17139)	JLT				