



Fluorescent Lamps

Shat-R-Shield fluorescent lamps are coated from end-to-end with our exclusive, patented plastic coating. If a Shat-R-Shield lamp is dropped or broken, virtually all glass, phosphors and mercury are safely contained within the coating. Our coating reduces light output by less than 1% and is a minimum of 16 mils thick. Shat-R-Shield lamps are UL & NSF Certified, USDA approved, and meet FDA and OSHA standards. Lamps should not be installed in areas where ambient temperatures exceed 120°F. Shat-R-Shield linear fluorescent lamps are available in various wattages, colors and Kelvin temperatures, including T5, T8 & T12 sizes. Shat-R-Shield also offers many fluorescent lamps in ultraviolet (UV) blocking versions.

STANDARD -

In full wattage, energy-saving, preheat, rapid start & instant start linear versions.

HIGH OUTPUT (HO) -

Shat-R-Shield HO fluorescent lamps for non-refrigerated areas combine the heat-resistant properties of DuPont Teflon® with the strength of our highly-specialized coating (Refrigerated & Non-Refrigerated Areas).

VERY HIGH OUTPUT (VHO) -

Shat-R-Shield's plastics can reliably withstand the extreme temperatures emitted by a VHO fluorescent lamp (Refrigerated, Non-Refrigerated & Freezer Areas).

U-SHAPED -

The safest choice for 2' x 2' luminaries. These lamps can provide the same light output as a linear lamp of twice the length.

REDUCED MERCURY LAMPS -

With the lowest mercury content on the market, these lamps are manufactured to meet the Toxic Characteristic Leaching Procedure (TCLP) standards established by the U.S. EPA.

BLACK LIGHT & BLACK LIGHT BLUE -

Shat-R-Shield's black light coating utilizes ultraviolet stabilizers to prevent degradation of the coating while also allowing critical ultra-wavelengths to pass through for maximum insect control.

GOLD LAMPS -

These lamps block all ultraviolet and plus light emissions up to 530 nms. They are ideal for use in cleanroom environments, microchip production and all other photosensitive applications.

UV / GERMICIDAL LAMPS -

These lamps destroy microbes such as bacteria, viruses, molds and spores with high-output ultraviolet (UV-C) radiation. Germicidal lamps are perfect for use in HVAC and water treatment systems. This popular and effective method of decontamination is a physical process eliminating the need for toxic chemicals.



T12 Plastic-Coated, Shatter-Resistant Fluorescent Lamps

Energy-Saving High Output (800ma) T12 Fluorescent Lamps Recessed Double Contact (RDC) *Teflon®/Shat-R-Kote® Combination (HO/TSC)* **RECOMMENDED FOR OPEN FIXTURES ONLY**

Nominal Lamp Watts	UPC/ Catalog Order#	Ordering Description	Std. Pkg. Qty.	Lamp Description	Nominal Length (Inches)	Avg. Life (Hours)	Mean Lumens
95	Ⓔ \$ 62015	F96T12/CW/HO/ES/TSC	15	COOL WHITE	96	12,000	6,950
	Ⓔ \$ 62017	F96T12/CW/HO/ES/ALTO/TSC	15	COOL WHITE	96	12,000	6,950
	\$ 62025	F96T12/DX/HO/ES/TSC	15	DAYLIGHT DELUXE	96	12,000	5,000

Teflon®/Shat-R-Kote® Combination (HO/TSC) - HO/TSC lamps combine the high heat-resistant properties of Teflon® with the strength and cost-effectiveness of Shat-R-Kote®. These lamps can be used anywhere high output (800ma) lamps are normally used, however, **HO/TSC lamps are recommended for open fixtures only.** HO/TSC lamps may not operate efficiently in refrigerated areas. For refrigerator applications below 45°F, see our HO/R lamp category.

High Output (800ma) T12 Fluorescent Lamps Recessed Double Contact (RDC) *For Refrigerated Areas Only (HO/R)*

Nominal Lamp Watts	UPC/ Catalog Order#	Ordering Description	Std. Pkg. Qty.	Lamp Description	Nominal Length (Inches)	Avg. Life (Hours)	Mean Lumens
60	57016	F48T12/CW/HO/ALTO/R	30	COOL WHITE	48	12,000	3,500
	57022	F48T12/D/HO/R	30	DAYLIGHT	48	12,000	3,000
75	58012	F60T12/CW/HO/R	15	COOL WHITE	60	12,000	4,500
	58022	F60T12/D/HO/R	15	DAYLIGHT	60	12,000	4,050
85	60012	F72T12/CW/HO/ALTO/R	15	COOL WHITE	72	12,000	5,500
	60022	F72T12/D/HO/ALTO/R	15	DAYLIGHT	72	12,000	4,850
110	62012	F96T12/CW/HO/R	15	COOL WHITE	96	12,000	7,650
	62042	F96T12/CWX/HO/R	15	COOL WHITE DELUXE	96	12,000	5,500
	62026	F96T12/D/HO/ALTO/R	15	DAYLIGHT	96	12,000	6,800

Energy-Saving High Output (800ma) T12 Fluorescent Lamps Recessed Double Contact (RDC) *For Refrigerated Areas Only (HO/R)*

Nominal Lamp Watts	UPC/ Catalog Order#	Ordering Description	Std. Pkg. Qty.	Lamp Description	Nominal Length (Inches)	Avg. Life (Hours)	Mean Lumens
95	Ⓔ \$ 62014	F96T12/CW/HO/ES/R	15	COOL WHITE	96	12,000	6,950
	Ⓔ \$ 62016	F96T12/CW/HO/ES/ALTO/R	15	COOL WHITE	96	12,000	6,950
	\$ 62024	F96T12/DX/HO/ES/R	15	DAYLIGHT DELUXE	96	12,000	5,000

For Refrigerated Areas Only (HO/R) - Due to the high heat created at the cathode ends, any use of these lamps in conditions above 45°F may cause deterioration of the protective Shat-R-Kote® coating. **HO/R lamps are for use in refrigerated areas where ambient temperatures do not exceed 45°F.** Conversely, HO/R lamps used in freezing temperatures will not operate efficiently, coated or uncoated. Because Shat-R-Shield has no control over the temperature range in the areas in which the lamps are operated, their performance cannot be guaranteed. However, HO/R lamps are being used with apparent success and should be expected to perform as well as other Shat-R-Shield lamps.

- \$ – Energy-Saving Product
 - Ⓔ – This bulb meets U.S. Federal minimum efficiency standards.
 - ALTO® – Reduced Mercury Lamps
 - – Features ALTO® Lamp Technology
- Footnotes located on page 28

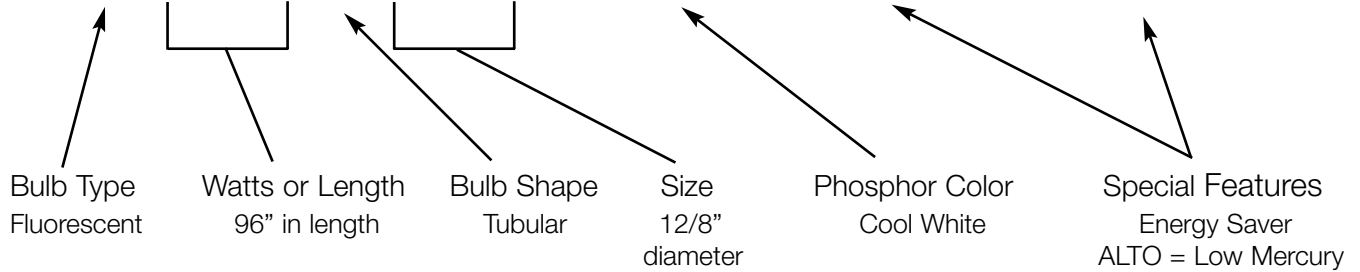
NOTE – Energy-Saving lamps are not intended for use in ambient temperatures below 60°F, in drafty locations, on low power factor ballasts, reduced current and light output ballasts, dimming ballasts, or on inventor powered emergency lighting systems. (3)



Shat-R-Shield Fluorescents
Performance
Plus Protection

Shat-R-Shield Fluorescents

F96T12/CW/ES/ALTO



LINEAR FLUORESCENT BULB TYPES - in lengths and wattage

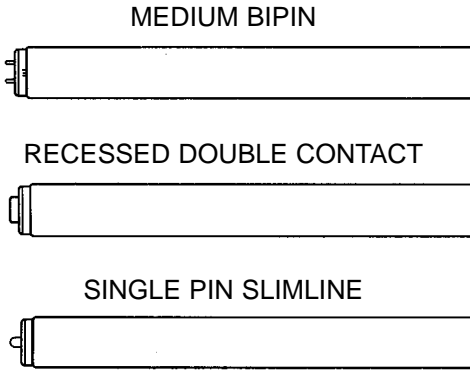
Bulb Type	Length	Wattage
F6	9" in length	6 watts
F8	12"	8 watts
F14	15"	14 watts
F15	18"	15 watts
F17	24"	17 watts
F20	24"	20 watts
F24	24"	20 or 35 watts
F25	33" or 36"	25 watts
F28	46"	28 watts
F30	36"	30 or 40 watts
F32	48"	32 watts
F34	48"	34 watts
F35	58"	35 watts
F36	36"	30 or 50 watts
F40	48" or 60"	34 or 40 watts
F42	42"	35 or 55 watts
F48	48" (4 ft.)	30 or 39 or 60 or 110 watts
F60	60"	50 or 75 or 135 watts
F64	64"	51 or 80 watts
F72	72"	56 or 85 or 160 watts
F84	84"	95 watts
F96	96" (8 ft.)	59 or 60 or 75 or 86 or 95 or 110 or 185 watts

BULB SIZE (diameter)

T5 = 5/8" diameter

T8 = 8/8" (or 1 inch)

T12 = 12/8" (or 1 and 1/2 inches)



Lamp Description	Designation	Atmosphere	Color Rendering Index (CRI)	Kelvin Color Temperature
Cool White	CW	Cool	62	4100
Cool White Deluxe	CWX	Cool	89	4200
Daylight	D	Daylight	79	6500
Lite-White	LW	Cool	51	4100
White	W	Neutral	58	3500
Warm White	WW	Warm	53	3000
Warm White Deluxe	WWX	Warm	79	3000
Natural	N	Warm	81	3400
Colortone 50	C50	Daylight	92	5000
Colortone 75	C75	Daylight	95	7500
SPEC 30	Spec 30	Warm	70	3000
SPEC 35	Spec 35	Neutral	73	3500
SPEC 41	Spec 41	Cool	70	4100
Ultralume 30	30U	Warm	85	3000
Ultralume 35	35U	Neutral	85	3500
Ultralume 41	41U	Cool	85	4100

Color Selection Guide



Fluorescent Lamps

Shat-R-Shield fluorescent lamps are coated from end-to-end with our exclusive, patented plastic coating. If a Shat-R-Shield lamp is dropped or broken, virtually all glass, phosphors and mercury are safely contained within the coating. Our coating reduces light output by less than 1% and is a minimum of 16 mils thick. Shat-R-Shield lamps are UL & NSF Certified, USDA approved, and meet FDA and OSHA standards. Lamps should not be installed in areas where ambient temperatures exceed 120°F. Shat-R-Shield linear fluorescent lamps are available in various wattages, colors and Kelvin temperatures, including T5, T8 & T12 sizes. Shat-R-Shield also offers many fluorescent lamps in ultraviolet (UV) blocking versions.

STANDARD -

In full wattage, energy-saving, preheat, rapid start & instant start linear versions.

HIGH OUTPUT (HO) -

Shat-R-Shield HO fluorescent lamps for non-refrigerated areas combine the heat-resistant properties of DuPont Teflon® with the strength of our highly-specialized coating (Refrigerated & Non-Refrigerated Areas).

VERY HIGH OUTPUT (VHO) -

Shat-R-Shield's plastics can reliably withstand the extreme temperatures emitted by a VHO fluorescent lamp (Refrigerated, Non-Refrigerated & Freezer Areas).

U-SHAPED -

The safest choice for 2' x 2' luminaries. These lamps can provide the same light output as a linear lamp of twice the length.

REDUCED MERCURY LAMPS -

With the lowest mercury content on the market, these lamps are manufactured to meet the Toxic Characteristic Leaching Procedure (TCLP) standards established by the U.S. EPA.

BLACK LIGHT & BLACK LIGHT BLUE -

Shat-R-Shield's black light coating utilizes ultraviolet stabilizers to prevent degradation of the coating while also allowing critical ultra-wavelengths to pass through for maximum insect control.

GOLD LAMPS -

These lamps block all ultraviolet and plus light emissions up to 530 nms. They are ideal for use in cleanroom environments, microchip production and all other photosensitive applications.

UV / GERMICIDAL LAMPS -

These lamps destroy microbes such as bacteria, viruses, molds and spores with high-output ultraviolet (UV-C) radiation. Germicidal lamps are perfect for use in HVAC and water treatment systems. This popular and effective method of decontamination is a physical process eliminating the need for toxic chemicals.



T12 Plastic-Coated, Shatter-Resistant Fluorescent Lamps

Energy-Saving High Output (800ma) T12 Fluorescent Lamps Recessed Double Contact (RDC) *Teflon®/Shat-R-Kote® Combination (HO/TSC)* **RECOMMENDED FOR OPEN FIXTURES ONLY**

Nominal Lamp Watts	UPC/ Catalog Order#	Ordering Description	Std. Pkg. Qty.	Lamp Description	Nominal Length (Inches)	Avg. Life (Hours)	Mean Lumens
95	ⓔ \$ 62015	F96T12/CW/HO/ES/TSC	15	COOL WHITE	96	12,000	6,950
	ⓔ \$ 62017	F96T12/CW/HO/ES/ALTO/TSC	15	COOL WHITE	96	12,000	6,950
	\$ 62025	F96T12/DX/HO/ES/TSC	15	DAYLIGHT DELUXE	96	12,000	5,000

Teflon®/Shat-R-Kote® Combination (HO/TSC) - HO/TSC lamps combine the high heat-resistant properties of Teflon® with the strength and cost-effectiveness of Shat-R-Kote®. These lamps can be used anywhere high output (800ma) lamps are normally used, however, **HO/TSC lamps are recommended for open fixtures only.** HO/TSC lamps may not operate efficiently in refrigerated areas. For refrigerator applications below 45°F, see our HO/R lamp category.

High Output (800ma) T12 Fluorescent Lamps Recessed Double Contact (RDC) *For Refrigerated Areas Only (HO/R)*

Nominal Lamp Watts	UPC/ Catalog Order#	Ordering Description	Std. Pkg. Qty.	Lamp Description	Nominal Length (Inches)	Avg. Life (Hours)	Mean Lumens
60	57016	F48T12/CW/HO/ALTO/R	30	COOL WHITE	48	12,000	3,500
	57022	F48T12/D/HO/R	30	DAYLIGHT	48	12,000	3,000
75	58012	F60T12/CW/HO/R	15	COOL WHITE	60	12,000	4,500
	58022	F60T12/D/HO/R	15	DAYLIGHT	60	12,000	4,050
85	60012	F72T12/CW/HO/ALTO/R	15	COOL WHITE	72	12,000	5,500
	60022	F72T12/D/HO/ALTO/R	15	DAYLIGHT	72	12,000	4,850
110	62012	F96T12/CW/HO/R	15	COOL WHITE	96	12,000	7,650
	62042	F96T12/CWX/HO/R	15	COOL WHITE DELUXE	96	12,000	5,500
	62026	F96T12/D/HO/ALTO/R	15	DAYLIGHT	96	12,000	6,800

Energy-Saving High Output (800ma) T12 Fluorescent Lamps Recessed Double Contact (RDC) *For Refrigerated Areas Only (HO/R)*

Nominal Lamp Watts	UPC/ Catalog Order#	Ordering Description	Std. Pkg. Qty.	Lamp Description	Nominal Length (Inches)	Avg. Life (Hours)	Mean Lumens
95	ⓔ \$ 62014	F96T12/CW/HO/ES/R	15	COOL WHITE	96	12,000	6,950
	ⓔ \$ 62016	F96T12/CW/HO/ES/ALTO/R	15	COOL WHITE	96	12,000	6,950
	\$ 62024	F96T12/DX/HO/ES/R	15	DAYLIGHT DELUXE	96	12,000	5,000

For Refrigerated Areas Only (HO/R) - Due to the high heat created at the cathode ends, any use of these lamps in conditions above 45°F may cause deterioration of the protective Shat-R-Kote® coating. **HO/R lamps are for use in refrigerated areas where ambient temperatures do not exceed 45°F.** Conversely, HO/R lamps used in freezing temperatures will not operate efficiently, coated or uncoated. Because Shat-R-Shield has no control over the temperature range in the areas in which the lamps are operated, their performance cannot be guaranteed. However, HO/R lamps are being used with apparent success and should be expected to perform as well as other Shat-R-Shield lamps.

- \$ – Energy-Saving Product
 - ⓔ – This bulb meets U.S. Federal minimum efficiency standards.
 - ALTO® – Reduced Mercury Lamps
 - – Features ALTO® Lamp Technology
- Footnotes located on page 28

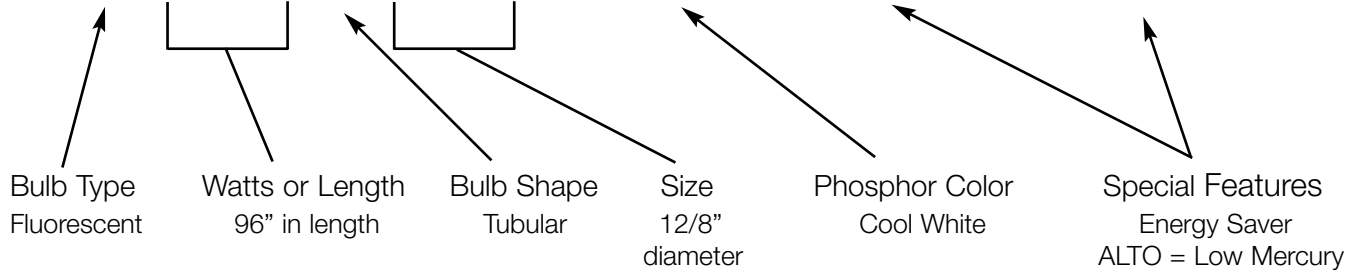
NOTE – Energy-Saving lamps are not intended for use in ambient temperatures below 60°F, in drafty locations, on low power factor ballasts, reduced current and light output ballasts, dimming ballasts, or on inventor powered emergency lighting systems. (3)



Shat-R-Shield Fluorescents
 Performance
 Plus Protection

Shat-R-Shield Fluorescents

F96T12/CW/ES/ALTO



LINEAR FLUORESCENT BULB TYPES - in lengths and wattage

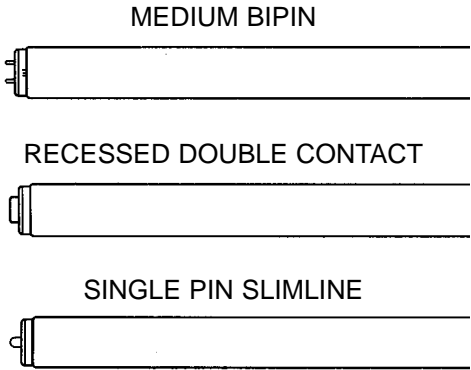
Bulb Type	Length	Wattage
F6	9" in length	6 watts
F8	12"	8 watts
F14	15"	14 watts
F15	18"	15 watts
F17	24"	17 watts
F20	24"	20 watts
F24	24"	20 or 35 watts
F25	33" or 36"	25 watts
F28	46"	28 watts
F30	36"	30 or 40 watts
F32	48"	32 watts
F34	48"	34 watts
F35	58"	35 watts
F36	36"	30 or 50 watts
F40	48" or 60"	34 or 40 watts
F42	42"	35 or 55 watts
F48	48" (4 ft.)	30 or 39 or 60 or 110 watts
F60	60"	50 or 75 or 135 watts
F64	64"	51 or 80 watts
F72	72"	56 or 85 or 160 watts
F84	84"	95 watts
F96	96" (8 ft.)	59 or 60 or 75 or 86 or 95 or 110 or 185 watts

BULB SIZE (diameter)

T5 = 5/8" diameter

T8 = 8/8" (or 1 inch)

T12 = 12/8" (or 1 and 1/2 inches)



Lamp Description	Designation	Atmosphere	Color Rendering Index (CRI)	Kelvin Color Temperature
Cool White	CW	Cool	62	4100
Cool White Deluxe	CWX	Cool	89	4200
Daylight	D	Daylight	79	6500
Lite-White	LW	Cool	51	4100
White	W	Neutral	58	3500
Warm White	WW	Warm	53	3000
Warm White Deluxe	WWX	Warm	79	3000
Natural	N	Warm	81	3400
Colortone 50	C50	Daylight	92	5000
Colortone 75	C75	Daylight	95	7500
SPEC 30	Spec 30	Warm	70	3000
SPEC 35	Spec 35	Neutral	73	3500
SPEC 41	Spec 41	Cool	70	4100
Ultralume 30	30U	Warm	85	3000
Ultralume 35	35U	Neutral	85	3500
Ultralume 41	41U	Cool	85	4100

Color Selection Guide