

Project		Catalog #		Type	
Prepared by		Notes		Date	



Metalux

WNLED

Utility LED Wraparound

Typical Applications

Commercial • Schools • Institutional • Retail • Residential

Interactive Menu

- Order Information [page 2](#)
- Photometric Data [page 3](#)
- Product Warranty

Product Certification



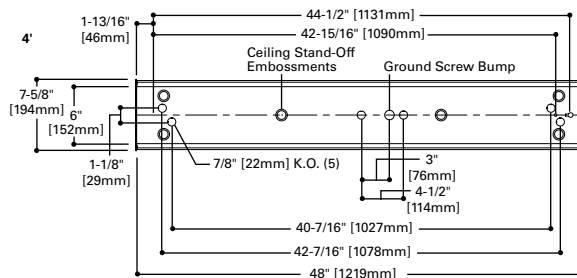
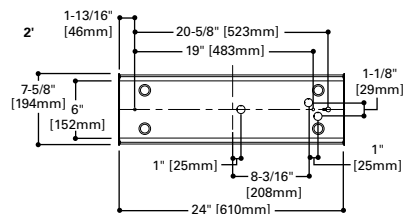
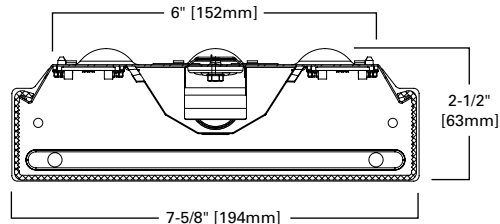
Product Features



Top Product Features

- 4 ft. and 2 ft. product configurations
- Frost lens offers best-in-class uniform illumination
- UNV (120V-277V) 0 to 10V dimmable driver
- Color Temperature (CCT): 3000K, 3500K, 4000K, 5000K
- Ideal for single or continuous row applications
- Options to meet Trade Agreements Act requirements

Dimensional and Mounting Details



Order Information

SAMPLE ORDER NUMBER: **4WNLED-LD4-40SL-F-UNV-L840-CD1-U**

Domestic Preferences	Length	Series	Lamp Type	Lumen Output	Lens	Voltage	Emergency Options
Domestic Preferences ⁽¹⁾	Length	Series ⁽²⁾	Lamp Type	Lumen Output	Lens	Voltage	Emergency Options ⁽⁷⁾
[Blank]=Standard TAA=Trade Agreements Act	2=2 ft. 4=4 ft.	WNLED=Utility LED Wraparound	LD4=LED	28SL=2800 ⁽³⁾ 32SL=3200 40SL=4000 50SL=5000	F=Frost Acrylic (standard)	347=347V ⁽⁴⁾ 480=480V ⁽⁴⁾ UNV=Universal Voltage 120-277	EL7W=7-watt, 120V-277V emergency battery pack installed ^{(5),(6)} EL14W=14-watt 120V-277V emergency battery pack installed ^{(5),(6)}
Notes (1) Only product configurations with this designated prefix are built to be compliant with the Trade Agreements Act of 1979 (TAA). Please refer to DOMESTIC PREFERENCES website for more information. Components shipped separately may be separately analyzed under domestic preference requirements.		Notes (2) DesignLights Consortium® Qualified and classified for DLC Standard, refer to www.designlights.org for details.		Notes (3) 2 ft. model.		Notes (4) 4 ft. model only.	Notes (5) With integral test switch/indicator/laser test. For approximate delivered lumens multiply the lumens per watt of the desired fixture by the wattage of the emergency battery pack (100 lm/W x 7=700 lumens). IES-format photometry for luminaire under emergency operation available.(6) Emergency options not available for 2 ft. versions. (7) Emergency options use taller ballast cover that alters appearance.

CCT Options	Driver Type	Number of Drivers	Packaging	Accessories
CCT Options	Driver Type	Number of Drivers	Packaging	Accessories (order separately) ⁽⁸⁾
L830=3000K L835=3500K L840=4000K L850=5000K	CD=0-10V Dimming Driver (10%-100% Dimming)	1=1 Driver	U=Unit Pack	SCF=Fixed Stem Set (Specify Length), (2 Per Fixture) SCS=Swivel Stem Set (Specify Length), (2 Per Fixture) SCA=Adjustable 48" Stem Set (2 Per Fixture) A1B/Spacer-U=Spacer 1-1/2" to 2-1/2" from ceiling (Use 2 Per Fixture) D82A140WNLED224 PK=Replacement Lens for 2WNLED D82A140WNLED248 PK=Replacement Lens for 4WNLED
				Notes (8) Accessories sold separately will be separately analyzed under domestic preference requirements. Consult factory for further information.

Product Specifications

Construction

- Housing consists of die formed cold rolled steel
- Ends formed with the housing for strength and provisions for continuous row aligners.
- Steel end plates with 7/8" KO and light-seal embossment
- Driver cover can be removed without tools

Controls

- WNLED has a standard 0-10V continuous dimming driver. Works with most 0-10V control/dimmer.
- Combine with energy saving products like occupancy sensors, daylighting controls and lighting relay panels to maximize energy savings
- Dimming range is 10% to 100% ; varies by control device

Electrical

- LED's available in 3000K, 3500K, 4000K and 5000K with a min. 80 CRI
- Projected life at 70% lumen maintenance is nearly 238,000 hours with TM21 rating up to L91 > 60,000 hours
- Electronic drivers are 0-10V dimming at 120-277V, 347V, and 480V applications

Emergency Battery Pack Option

- Optional 120V-277V integral emergency battery pack at 7 or 14-watts
- The 90-minute batteries provide constant power to the LED system, ensuring code compliance
- The patented EZ Key prevents accidental discharge of the battery during installation

Finish

- Multistage iron phosphate pretreatment ensures maximum bonding and rust inhibitor
- High reflective paint after fabrication, baked white enamel finish is standard

Channel/Wireway Cover

- Die formed heavy gauge steel
- Tight fit for ease of maintenance

Shielding

- Acrylic, high performance, frost blend
- Sides have internal linear prisms and bottom has pyramidal prisms for brightness control

Installation

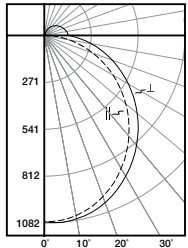
- Fixture may be surface, pendant, or stem mounted.
- See accessories below for ordering information

Compliance

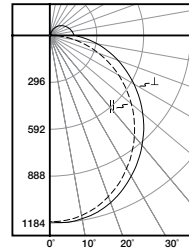
- Indoor luminaires are cULus listed for 25°C ambient environments, damp location listed, RoHS compliant, and LED modules comply with IESNA LM-79 and LM-80 standards
- DesignLights Consortium® Qualified and classified for DLC Standard, refer to [www.designlights.org](#) for details
- Suitable for use in clothes closets when installed in accordance with the NEC 410.16 spacing requirements
- Can be used for State of California Title 24 high efficacy luminaire

Photometric Data

[View IES files](#)



4WNLED-LD4-32SL-F-UNV-L835-CD1-U
 Electronic Driver
 Linear LED 3500K
 Spacing criterion: (II) 1.22 x mounting height,
 (⊥) 1.29 x mounting height
 Lumens: 3674
 Input Watts: 27.1W
 Efficacy: 136 LPW
 Test Report:
 4WNLED-LD4-32SL-F-UNV-L835-CD1-U.IES



4WNLED-LD4-40SL-F-UNV-L835-CD1-U
 Electronic Driver
 Linear LED 3500K
 Spacing criterion: (II) 1.22 x mounting height,
 (⊥) 1.29 x mounting height
 Lumens: 4006
 Input Watts: 29.9W
 Efficacy: 134 LPW
 Test Report:
 4WNLED-LD4-40SL-F-UNV-L835-CD1-U.IES

Energy and Performance Data by Catalog

Lumen Type	Length	Catalog Number	Nominal 3500K Lumens	Watts	lm/W
Standard	2 ft.	2WNLED-LD4-28SL-F-UNV-L8XX-CD1-U	2819	22.3	124
Standard	4 ft.	4WNLED-LD4-32SL-F-UNV-L8XX-CD1-U	3674	27.1	136
Standard	4 ft.	4WNLED-LD4-40SL-F-UNV-L8XX-CD1-U	4006	29.9	134
Standard	4 ft.	4WNLED-LD4-50SL-F-UNV-L8XX-CD1-U	5098	37.0	138

CCT Table

Approximate Color Temperature Multiplier	
5000K	1.03
4000K	1.02
3500K	1.00
3000K	0.98

Shipping Data

Catalog No.	Wt.
2WNLED	5 lbs.
4WNLED	9 lbs.