

SNAP²IT[®] MC Cable Connectors

Largest Line. Widest Cable Ranges. Fastest Installation.



SAVE 17 seconds
per connector

LISTED SNAP²IT[®] CONNECTORS FOR NEW MC-PCS and MC-PCS HCF CABLE ...lighting & low voltage circuits in same cable

4010AST
1/2" KO

5010AST
1/2" KO

4110ST

414110ST

505010AST
3/4" KO

Arlington's zinc diecast SNAP²IT[®] fittings are the *easiest to insert* snap-on connectors. And they handle the widest variety of cables!

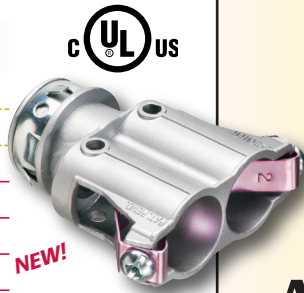
- **Easiest installation**
New and improved design delivers the easiest cable insertion.
- **Widest total cable ranges**
Our Snap²It[®] connector line accommodates cables from 1/4" to 3/4".
- **Widest variety of cables**
For AC, MC, HCF, MC continuous corrugated aluminum cable, MCI-A cables (steel and aluminum), AC90 and ACG90.

These Snap2It connectors fit the NEW MC-PCS and MC-PCS HCF CABLE (lighting and low voltage circuits in same cable) and offer the GREATEST TIME-SAVINGS.

- Super-secure installation in new work or retrofit
- Connector is removable, reusable
- Fully assembled – Ready to use
- Concrete-tight when taped

Easiest cable insertion. NO TOOLS! Secure hold.

| CATALOG NUMBER | UPC/DCI/NAED MFG #01 8997 | DESCRIPTION | CABLE OUTSIDE DIA (OD) | UNIT/STD PKG |
|----------------|---------------------------|--|------------------------|--------------|
| 4010AST | 40355 | Snap in, 1/2" KO w insulated throat | .405 to .610 | 50/500 |
| 5010AST | 00517 | Snap in, 1/2" KO w insulated throat | .580 to .780 | 25/250 |
| 505010AST | 50720 | Duplex Snap in, 3/4" KO w insulated throat | (2) .590 to .820 | 25/25 |
| 4110ST | 00728 | Snap in, 1/2" KO | .525 to .705 | 50/500 |
| 414110ST | 00729 | Duplex Snap in, 1/2" KO | (2) .525 to .640 | 25/100 |
| 4141107ST | 22095 | Duplex Snap in, 3/4" KO | (2) .525 to .690 | 25/25 |



NEW!

4141107ST



Arlington
www.aifittings.com

SNAP2IT[®] MC Cable Connectors



Largest Line. Widest Cable Ranges. Fastest Installation.

Snap2It Connectors with Insulated Throat and Angled Two-prong Clip

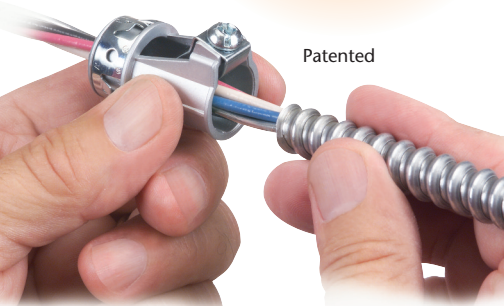
Our 3810AST through 7510AST SNAP2IT[®] connectors install just as fast and cost the same as our other Snap2It fittings, but **cable insertion is even easier!**

- **Easy installation** snap cable into fitting – assembly into box...No tools!
- Angled clip locks onto MC cable — No pullout
- **Removal, reusable**
From cable: Loosen screw on top of connector. Pull cable out.
From box: Slip screwdriver under Snap-Tite ring and twist (photo on back).



4010AST Exploded View/Components

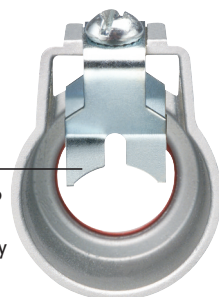
- Screw holds clip permanently in place — Loosen to remove cable
- Angled, two-prong clip locks down on cable, holding it securely in place
- Insulated throat



Patented

7510AST Back view

- Angled, heavy-duty two-prong clip holds large cables securely in place



LARGER SIZES

| CATALOG NUMBER | UPC/DCI/NAED MFG. #01 8997 | CABLE (OD) OUTSIDE DIAMETER | CABLE TYPE | CABLE SIZES | UNIT PKG | STD PKG |
|--------------------------|----------------------------|-----------------------------|--|--|----------|---------|
| 3810AST | 00385 | .370 to .510 | For steel and aluminum: MC/HCF/AC NEW MC-PCS MCI-A | 14/2 and 12/2 with and w/o ground; 14/3 and 12/3 | 50 | 500 |
| | | .370 to .510 | AC90, ACG90 | 14/2, 14/3, 12/2, 12/3 | 25 | 100 |
| 383810AST Duplex | 10937 | | Flexible metal conduit | 3/8" Flex* .560 to .610 | | |
| 4010AST | 40355 | .405 to .610 | For steel and aluminum: MC/HCF/AC NEW MC-PCS | 14/2, 14/3, 14/4, 12/2, 12/3, 12/4, 10/2, 10/3 | 50 | 500 |
| | | .405 to .580 | MCI-A | | 25 | 100 |
| | | .405 to .610 | AC90, ACG90 | | | |
| 404010AST Duplex | 40533 | | Flexible metal conduit | 3/8" Flex* .560 to .610 | | |
| 5010AST 1/2" KO | 00517 | .580 to .780 | For steel and aluminum: MC/HCF/AC NEW MC-PCS | 10/3, 10/4, 8/2, 8/3, 8/4 6/2, 6/3 | 25 | 250 |
| | | .610 to .780 | MCI-A | | 25 | 25 |
| | | .550 to .850 | AC90, ACG90 | 10/3, 10/4, 8/2, 8/3 | | |
| 505010AST Duplex 3/4" KO | 50720 | | Flexible metal conduit | 1/2" Flex* .590 to .820 | | |
| 7510AST 3/4" KO | 55090 | .895 to 1.035 | For steel and aluminum: MC/HCF/AC MCI-A | 8/4, 6/4, 6/3 | 25 | 25 |
| | | .900 to .970 | AC90 | 6/3, 4/4, 4/3, 3/3 | 25 | 25 |
| | | | Flexible metal conduit | 3/4" Flex* 1.045 to 1.035 | | |

Check that the cable's outer diameter (OD) listed by the cable manufacturer is within the OD cable range listed for the fitting. The cable jacket should never be able to go through the end stop (of fitting.) *CSA Listed w/ anti-short bushing ONLY

Single (Straight & 90 degree) • Duplex

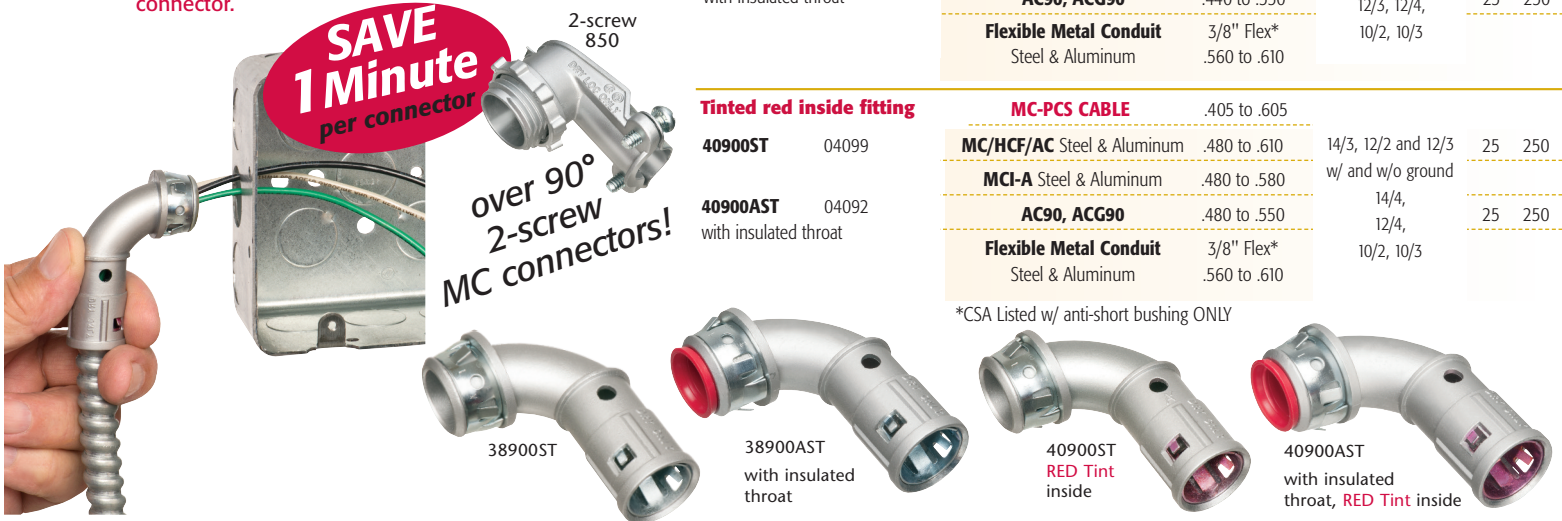
for New Work and Retrofit

90 Degree Snap2It® Connectors

Arlington's snap in connectors save time by eliminating the multiple steps required for a 90 degree 2-screw connector. **And they COST THE SAME AS A TWO-SCREW, 90 degree connector.**

SAVE 1 Minute per connector

2-screw 850
over 90° 2-screw MC connectors!



| CATALOG NUMBER | UPC/DCI/NAED MFG #01 8997 | CABLE TYPE | CABLE (OD) OUTSIDE DIAMETER | CABLE SIZES | UNIT PKG | STD PKG |
|----------------|---------------------------|---------------------------------------|-----------------------------|---------------------------------|----------|---------|
| 38900ST | 04098 | MC-PCS CABLE | .440 to .610 | | | |
| | | MC/HCF/AC Steel & Aluminum | .440 to .610 | 14/2 and 12/2 w/ and w/o ground | 25 | 250 |
| | | MCI-A Steel & Aluminum | .440 to .550 | 14/3, 14/4, | | |
| 38900AST | 04093 | AC90, ACG90 | .440 to .550 | 12/3, 12/4, | 25 | 250 |
| | | Flexible Metal Conduit | 3/8" Flex* | 10/2, 10/3 | | |
| | | Steel & Aluminum | .560 to .610 | | | |

| CATALOG NUMBER | UPC/DCI/NAED MFG #01 8997 | CABLE TYPE | CABLE (OD) OUTSIDE DIAMETER | CABLE SIZES | UNIT PKG | STD PKG |
|----------------|---------------------------|---------------------------------------|-----------------------------|---------------------------------------|----------|---------|
| 40900ST | 04099 | MC-PCS CABLE | .405 to .605 | | | |
| | | MC/HCF/AC Steel & Aluminum | .480 to .610 | 14/3, 12/2 and 12/3 w/ and w/o ground | 25 | 250 |
| | | MCI-A Steel & Aluminum | .480 to .580 | 14/4, | | |
| 40900AST | 04092 | AC90, ACG90 | .480 to .550 | 12/4, | 25 | 250 |
| | | Flexible Metal Conduit | 3/8" Flex* | 10/2, 10/3 | | |
| | | Steel & Aluminum | .560 to .610 | | | |

*CSA Listed w/ anti-short bushing ONLY

for use in INSTALLED BOXES • RETROFIT



1
Pull MC cable through knockout in **INSTALLED** old work box.

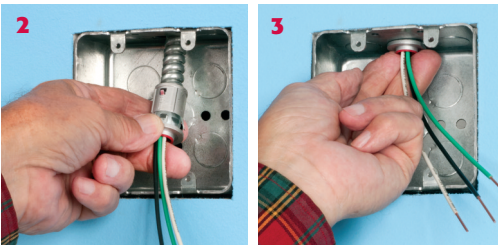
Snap fitting onto cable.

Arlington's one-piece **RETROFIT SNAP²IT[®]** fittings are *easy to use in OLD WORK installations*. They're ideal for adding additional circuits to a load center. And you get the same time-savings in a retrofit installation as you do in new work!

Quick, easy installation – **NO TOOLS** required.

| CATALOG NUMBER | UPC/DCI/NAED MFG #01 8997 | CABLE TYPE | CABLE (OD) OUTSIDE DIA | CABLE SIZES | UNIT/STD PKG |
|----------------|---------------------------|---------------------------------------|------------------------|---------------------------------------|--------------|
| 38RAST | 13586 | MC/HCF/AC Steel & Aluminum | .405 to .605 | 14/2 and 12/2 w/ and w/o ground | |
| | | MCI-A Steel & Aluminum | .440 to .550 | 14/3, 14/4, | 25/25 |
| | | AC90, ACG90 | .440 to .550 | 12/3, 12/4, | |
| | | Flexible Metal Conduit | 3/8" Flex* | 10/2, 10/3 | |
| 40RAST | 13587 | MC/HCF/AC Steel & Aluminum | .485 to .610 | 14/3, 12/2 and 12/3 w/ and w/o ground | |
| | | MCI-A Steel & Aluminum | .480 to .610 | 14/4, | 25/25 |
| | | AC90, ACG90 | .480 to .550 | 12/4, | |
| | | Flexible Metal Conduit | 3/8" Flex* | 10/2, 10/3 | |

*CSA Listed w/ anti-short bushing ONLY



2
Push assembly into box...

3
...snap it into the box.
Fast and easy. No tools required!



Check that the cable's outer diameter (OD) listed by the cable manufacturer is within the OD cable range listed for the fitting. The cable jacket should never be able to go through the end stop (of fitting).



Arlington
www.aifittings.com

SNAP²IT[®] MC Cable Connectors

for NEW WORK

Snap2It[®] Connectors

Designed for new construction, this SNAP²IT[®] series offers quick, easy snap-in installation into cable and into box. NO TOOLS required.

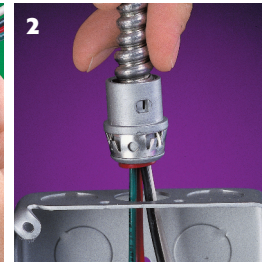
SAVE 17 seconds
per connector

| CATALOG NUMBER | UPC/DCI/NAED MFG #01 8997 | CABLE TYPE | CABLE (OD) OUTSIDE DIA | CABLE SIZES | UNIT/STD PKG |
|--|---------------------------|---|-----------------------------|---------------------------|--------------|
| * WITH INSULATED THROAT | | | | | |
| 38AST * | 00070 | MC/HCF/AC Steel & Aluminum | .405 to .605 | 14/2 and 12/2 | 50/500 |
| 38OST | 00381 | MCI-A Steel & Aluminum | .405 to .605 | w/ and w/o ground | 50/500 |
| 380AST * | 00382 | AC90, ACG90 | .405 to .605 | 14/3, 14/4, | 50/500 |
| 3838AST * | Duplex 36230 | Flexible Metal Conduit Steel & Aluminum (RWFMC) | 3/8" Flex** .405 to .605 | 12/3, 12/4, 10/2, 10/3 | 25/100 |
| WITH INSULATED THROAT, TINTED RED INSIDE OPEN TANG DESIGN | | | | | |
| 40AST | 00041 | MC/HCF/AC Steel & Aluminum | .485 to .610 | 14/3, 12/2 and 12/3 | 50/500 |
| 400AST | 40347 | MCI-A Aluminum | .485 to .610 | w/ and w/o ground | 50/500 |
| 4040AST * | Duplex 40351 | AC90, ACG90 | .485 to .610 | 14/4, | 25/100 |
| | | Flexible Metal Conduit Steel & Aluminum | 3/8" Flex** .485 to .610 | 12/4, 10/2, 10/3 | |

**Flex CSA Listed w/ anti-short bushing ONLY



1 Snap fitting onto cable... twist clockwise



2 ...snap assembly into the box!

EASY TO INSTALL

EASY TO REMOVE and REUSE...

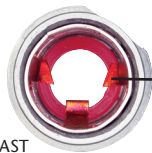


To remove from box, lift Snap-Tite[®] ring with a screwdriver and twist off.

PRODUCT COMPARISON



38AST



40AST

RED TINT inside means OPEN TANG Design

More room inside for easy insertion of wires...redesigned snap ring makes it easier than ever to snap fitting into box



3838AST



38AST



40AST



RED Tint inside

4040AST



Check that the cable's outer diameter (OD) listed by the cable manufacturer is within the OD cable range listed for the fitting. The cable jacket should never be able to go through the end stop (of fitting).

Arlington

1 Stauffer Industrial Park
Scranton, PA 18517
800/233.4717
Fax 570/562.0646
www.aifittings.com

Patented ©2015 Arlington Industries Inc. REV0318 50M

Distributed by

SNAP²IT[®] MC Cable Connectors

Largest Line. Widest Cable Ranges. Fastest Installation.



SAVE 17 seconds
per connector

LISTED SNAP²IT[®] CONNECTORS FOR NEW MC-PCS and MC-PCS HCF CABLE ...lighting & low voltage circuits in same cable

4010AST
1/2" KO

5010AST
1/2" KO

4110ST

414110ST

505010AST
3/4" KO

Arlington's zinc diecast SNAP²IT[®] fittings are the *easiest to insert* snap-on connectors. And they handle the widest variety of cables!

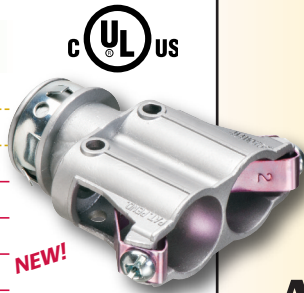
- **Easiest installation**
New and improved design delivers the easiest cable insertion.
- **Widest total cable ranges**
Our Snap²It[®] connector line accommodates cables from 1/4" to 3/4".
- **Widest variety of cables**
For AC, MC, HCF, MC continuous corrugated aluminum cable, MCI-A cables (steel and aluminum), AC90 and ACG90.

These Snap2It connectors fit the NEW MC-PCS and MC-PCS HCF CABLE (lighting and low voltage circuits in same cable) and offer the GREATEST TIME-SAVINGS.

- Super-secure installation in new work or retrofit
- Connector is removable, reusable
- Fully assembled – Ready to use
- Concrete-tight when taped

Easiest cable insertion. NO TOOLS! Secure hold.

| CATALOG NUMBER | UPC/DCI/NAED MFG #01 8997 | DESCRIPTION | CABLE OUTSIDE DIA (OD) | UNIT/STD PKG |
|----------------|---------------------------|--|------------------------|--------------|
| 4010AST | 40355 | Snap in, 1/2" KO w insulated throat | .405 to .610 | 50/500 |
| 5010AST | 00517 | Snap in, 1/2" KO w insulated throat | .580 to .780 | 25/250 |
| 505010AST | 50720 | Duplex Snap in, 3/4" KO w insulated throat | (2) .590 to .820 | 25/25 |
| 4110ST | 00728 | Snap in, 1/2" KO | .525 to .705 | 50/500 |
| 414110ST | 00729 | Duplex Snap in, 1/2" KO | (2) .525 to .640 | 25/100 |
| 4141107ST | 22095 | Duplex Snap in, 3/4" KO | (2) .525 to .690 | 25/25 |



NEW!

4141107ST



Arlington
www.aifittings.com

SNAP2IT[®] MC Cable Connectors



Largest Line. Widest Cable Ranges. Fastest Installation.

Snap2It Connectors with Insulated Throat and Angled Two-prong Clip

Our 3810AST through 7510AST SNAP2IT[®] connectors install just as fast and cost the same as our other Snap2It fittings, but **cable insertion is even easier!**

- **Easy installation** snap cable into fitting – assembly into box...No tools!
- Angled clip locks onto MC cable — No pullout
- **Removal, reusable**
From cable: Loosen screw on top of connector. Pull cable out.
From box: Slip screwdriver under Snap-Tite ring and twist (photo on back).



4010AST Exploded View/Components

- Screw holds clip permanently in place — Loosen to remove cable
- Angled, two-prong clip locks down on cable, holding it securely in place



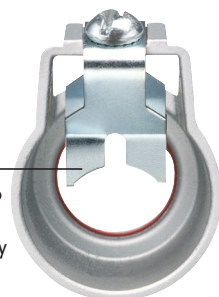
Insulated throat

Patented



7510AST Back view

- Angled, heavy-duty two-prong clip holds large cables securely in place



LARGER SIZES

| CATALOG NUMBER | UPC/DCI/NAED MFG. #01 8997 | CABLE (OD) OUTSIDE DIAMETER | CABLE TYPE | CABLE SIZES | UNIT PKG | STD PKG |
|--------------------------|----------------------------|-----------------------------|--|---|------------------------------|---------|
| 3810AST | 00385 | .370 to .510 | For steel and aluminum: MC/HCF/AC NEW MC-PCS MCI-A | 14/2 and 12/2 with and w/o ground; 14/3 and 12/3 | 50 | 500 |
| | | .370 to .510 | AC90, ACG90 | 14/2, 14/3, 12/2, 12/3 | 25 | 100 |
| 383810AST Duplex | 10937 | | Flexible metal conduit | 3/8" Flex* .560 to .610 | | |
| 4010AST | 40355 | .405 to .610 | For steel and aluminum: MC/HCF/AC NEW MC-PCS | 14/2, 14/3, 14/4, 12/2, 12/3, 12/4, | 50 | 500 |
| | | .405 to .580 | MCI-A | 10/2, 10/3 | | |
| | | 404010AST Duplex | 40533 | .405 to .610 | AC90, ACG90 | |
| | | | Flexible metal conduit | 3/8" Flex* .560 to .610 | | |
| 5010AST 1/2" KO | 00517 | .580 to .780 | For steel and aluminum: MC/HCF/AC NEW MC-PCS | 10/3, 10/4, 8/2, 8/3, 8/4 6/2, 6/3 | 25 | 250 |
| | | .610 to .780 | MCI-A | | | |
| | | .550 to .850 | AC90, ACG90 | 10/3, 10/4, 8/2, 8/3 | | |
| 505010AST Duplex 3/4" KO | 50720 | | Flexible metal conduit | 1/2" Flex* .590 to .820 | 25 | 25 |
| 7510AST 3/4" KO | 55090 | .895 to 1.035 | For steel and aluminum: MC/HCF/AC MCI-A | 8/4, 6/4, 6/3 | 25 | 25 |
| | | .900 to .970 | AC90 | 6/3, 4/4, 4/3, 3/3 | | |
| | | | | Flexible metal conduit | 3/4" Flex* 1.045 to 1.035 | |

Check that the cable's outer diameter (OD) listed by the cable manufacturer is within the OD cable range listed for the fitting. The cable jacket should never be able to go through the end stop (of fitting.) *CSA Listed w/ anti-short bushing ONLY

Single (Straight & 90 degree) • Duplex

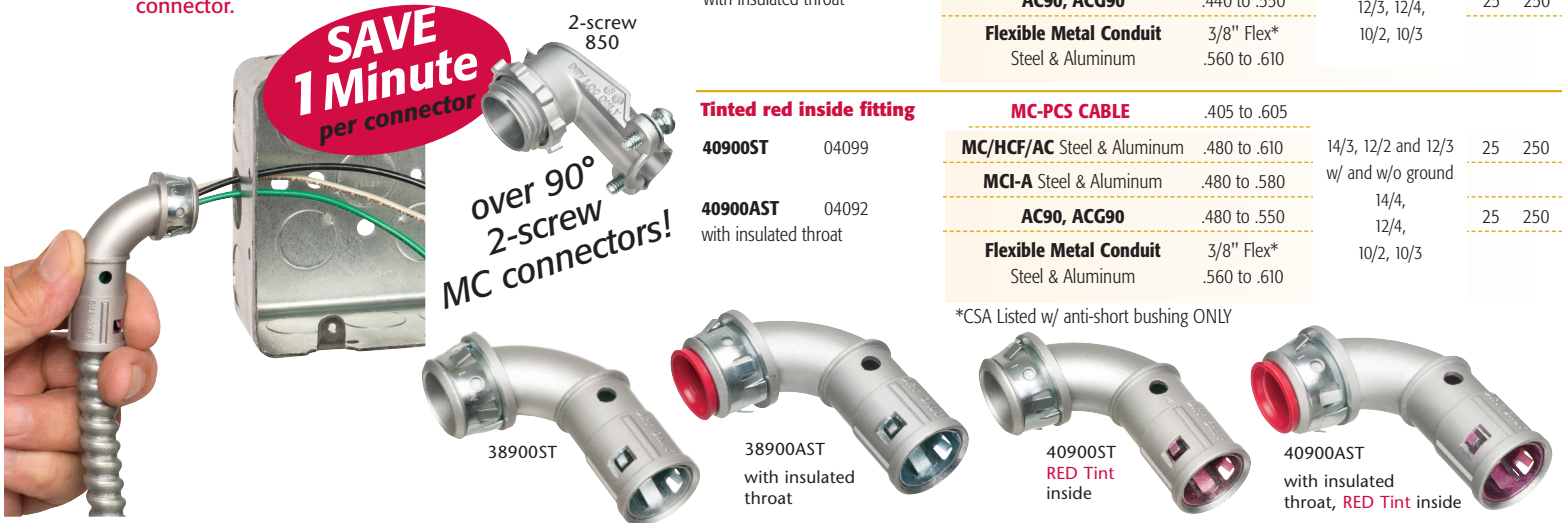
for New Work and Retrofit

90 Degree Snap2It® Connectors

Arlington's snap in connectors save time by eliminating the multiple steps required for a 90 degree 2-screw connector. **And they COST THE SAME AS A TWO-SCREW, 90 degree connector.**

SAVE 1 Minute per connector

2-screw 850
over 90°
2-screw MC connectors!



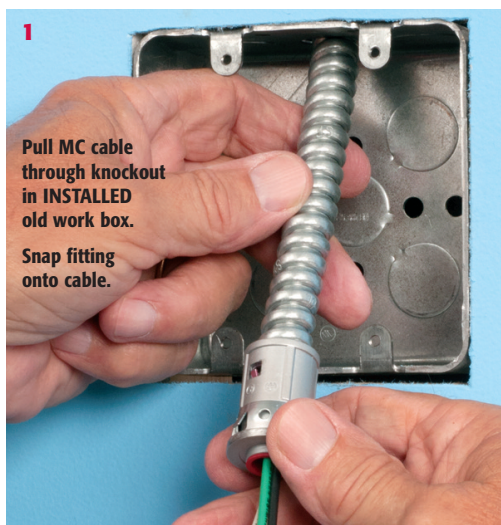
| CATALOG NUMBER | UPC/DCI/NAED MFG #01 8997 | CABLE TYPE | CABLE (OD) OUTSIDE DIAMETER | CABLE SIZES | UNIT PKG | STD PKG |
|--------------------------------|---------------------------|--|-----------------------------|------------------------------------|----------|---------|
| 38900ST | 04098 | MC-PCS CABLE | .440 to .610 | | | |
| | | MC/HCF/AC Steel & Aluminum | .440 to .610 | 14/2 and 12/2 w/ and w/o ground | 25 | 250 |
| 38900AST with insulated throat | 04093 | MCI-A Steel & Aluminum | .440 to .550 | 14/3, 14/4, 12/3, 12/4, 10/2, 10/3 | 25 | 250 |
| | | AC90, ACG90 | .440 to .550 | | | |
| | | Flexible Metal Conduit Steel & Aluminum | 3/8" Flex* .560 to .610 | | | |

Tinted red inside fitting

| CATALOG NUMBER | UPC/DCI/NAED MFG #01 8997 | CABLE TYPE | CABLE (OD) OUTSIDE DIAMETER | CABLE SIZES | UNIT PKG | STD PKG |
|--------------------------------|---------------------------|--|-----------------------------|---------------------------------------|----------|---------|
| 40900ST | 04099 | MC-PCS CABLE | .405 to .605 | | | |
| | | MC/HCF/AC Steel & Aluminum | .480 to .610 | 14/3, 12/2 and 12/3 w/ and w/o ground | 25 | 250 |
| 40900AST with insulated throat | 04092 | MCI-A Steel & Aluminum | .480 to .580 | 14/4, 12/4, 10/2, 10/3 | 25 | 250 |
| | | AC90, ACG90 | .480 to .550 | | | |
| | | Flexible Metal Conduit Steel & Aluminum | 3/8" Flex* .560 to .610 | | | |

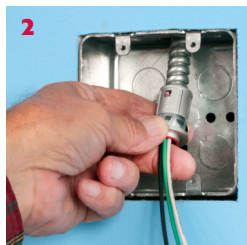
*CSA Listed w/ anti-short bushing ONLY

for use in INSTALLED BOXES • RETROFIT

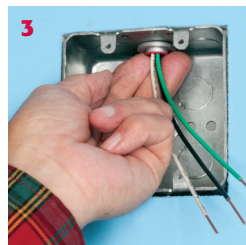


1
Pull MC cable through knockout in **INSTALLED** old work box.

Snap fitting onto cable.



2
Push assembly into box...



3
...snap it into the box. Fast and easy. No tools required!

Arlington's one-piece **RETROFIT SNAP²IT[®]** fittings are *easy to use in OLD WORK installations*. They're ideal for adding additional circuits to a load center. And you get the same time-savings in a retrofit installation as you do in new work!

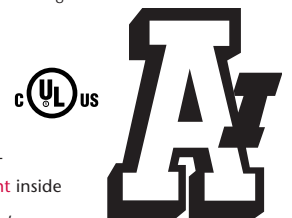
Quick, easy installation – NO TOOLS required.

| CATALOG NUMBER | UPC/DCI/NAED MFG #01 8997 | CABLE TYPE | CABLE (OD) OUTSIDE DIA | CABLE SIZES | UNIT/STD PKG |
|--|---------------------------|--|-------------------------|---------------------------------------|--------------|
| 38RAST with insulated throat | 13586 | MC/HCF/AC Steel & Aluminum | .405 to .605 | 14/2 and 12/2 w/ and w/o ground | 25/25 |
| | | MCI-A Steel & Aluminum | .440 to .550 | 14/3, 14/4, 12/3, 12/4, 10/2, 10/3 | |
| | | AC90, ACG90 | .440 to .550 | | |
| | | Flexible Metal Conduit Steel & Aluminum | 3/8" Flex* .405 to .605 | | |
| 40RAST with insulated throat Tinted RED inside fitting | 13587 | MC/HCF/AC Steel & Aluminum | .485 to .610 | 14/3, 12/2 and 12/3 w/ and w/o ground | 25/25 |
| | | MCI-A Steel & Aluminum | .480 to .610 | 14/4, 12/4, 10/2, 10/3 | |
| | | AC90, ACG90 | .480 to .550 | | |
| | | Flexible Metal Conduit Steel & Aluminum | 3/8" Flex* .405 to .610 | | |

*CSA Listed w/ anti-short bushing ONLY



Check that the cable's outer diameter (OD) listed by the cable manufacturer is within the OD cable range listed for the fitting. The cable jacket should never be able to go through the end stop (of fitting).



Arlington
www.aifittings.com

SNAP²IT[®] MC Cable Connectors

for NEW WORK

Snap2It[®] Connectors

Designed for new construction, this SNAP²IT[®] series offers quick, easy snap-in installation into cable and into box. NO TOOLS required.

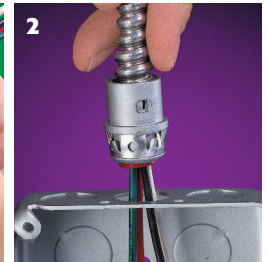
SAVE 17 seconds
per connector

| CATALOG NUMBER | UPC/DCI/NAED MFG #01 8997 | CABLE TYPE | CABLE (OD) OUTSIDE DIA | CABLE SIZES | UNIT/STD PKG |
|--|---------------------------|---|-----------------------------|---------------------------|--------------|
| * WITH INSULATED THROAT | | | | | |
| 38AST * | 00070 | MC/HCF/AC Steel & Aluminum | .405 to .605 | 14/2 and 12/2 | 50/500 |
| 38OST | 00381 | MCI-A Steel & Aluminum | .405 to .605 | w/ and w/o ground | 50/500 |
| 380AST * | 00382 | AC90, ACG90 | .405 to .605 | 14/3, 14/4, | 50/500 |
| 3838AST * | Duplex 36230 | Flexible Metal Conduit Steel & Aluminum (RWFMC) | 3/8" Flex** .405 to .605 | 12/3, 12/4, 10/2, 10/3 | 25/100 |
| WITH INSULATED THROAT, TINTED RED INSIDE OPEN TANG DESIGN | | | | | |
| 40AST | 00041 | MC/HCF/AC Steel & Aluminum | .485 to .610 | 14/3, 12/2 and 12/3 | 50/500 |
| 400AST | 40347 | MCI-A Aluminum | .485 to .610 | w/ and w/o ground | 50/500 |
| 4040AST * | Duplex 40351 | AC90, ACG90 | .485 to .610 | 14/4, | 25/100 |
| | | Flexible Metal Conduit Steel & Aluminum | 3/8" Flex** .485 to .610 | 12/4, 10/2, 10/3 | |

**Flex CSA Listed w/ anti-short bushing ONLY



1 Snap fitting onto cable... twist clockwise



2 ...snap assembly into the box!

EASY TO INSTALL

EASY TO REMOVE and REUSE...

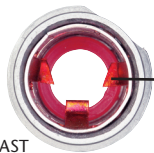


To remove from box, lift Snap-Tite[®] ring with a screwdriver and twist off.

PRODUCT COMPARISON



38AST



40AST

RED TINT inside means OPEN TANG Design

More room inside for easy insertion of wires...redesigned snap ring makes it easier than ever to snap fitting into box



3838AST



38AST

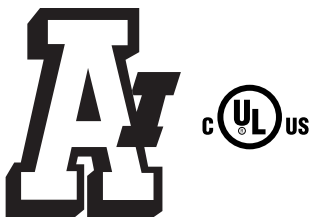


40AST



RED Tint inside

4040AST



Check that the cable's outer diameter (OD) listed by the cable manufacturer is within the OD cable range listed for the fitting. The cable jacket should never be able to go through the end stop (of fitting).

Arlington

1 Stauffer Industrial Park
Scranton, PA 18517
800/233.4717
Fax 570/562.0646
www.aifittings.com

Patented ©2015 Arlington Industries Inc. REV0318 50M

Distributed by