

Terminating Cat 5 Cable

1. ITEMS NEEDED

LEGRAND PRODUCTS:

364555-01 - EZ-RJ45 Modular Plug Hand Tool

363292-01 - Cat 5 Strip and Fit Tool

364554-01 - EZ-RJ45 Modular Cat5 Plug

TOOLS & ADDITIONAL SUPPLIES:

- Wire Cutter
- Continuity Tester
- Cat 5 Cable



2. INTRODUCTION

A structured wiring foundation is the most effective way to distribute information throughout a home. It supports high-performance technology through clutter-free cabling hidden behind the walls. To ensure more efficient installation, run a single home run to a central distribution point and bundle cables for access to multiple services.

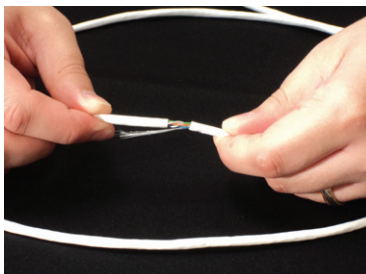
There are several fundamentals to remember when working with Cat 5:

- On-Q products utilize the T568A wiring standard
- Never splice Cat 5 cable
- Always maintain a 12-inch minimum separation between the Cat 5 and any 120 Volt AC cabling. If you must cross and electrical circuit, do so at a 90 degree angle
- Always maintain a minimum bend radius of 1 inch.
- Never exceed the 25 pound pull limit. Doing so may pull the twists out of the wire, which is what gives Cat 5 its immunity from interference. For the same reason, you shouldn't stand on the wire or use any retention devices that flatten out the wire.

3. HOW TO STEP-BY-STEP

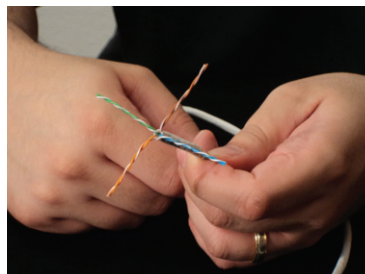
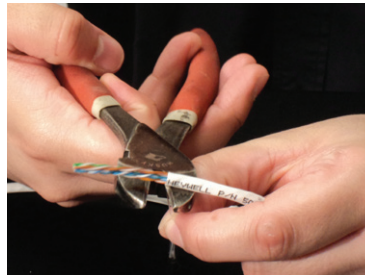
STEP 1

Use the Strip and Fit tool to cut off approximately two inches of the jacket.



STEP 2

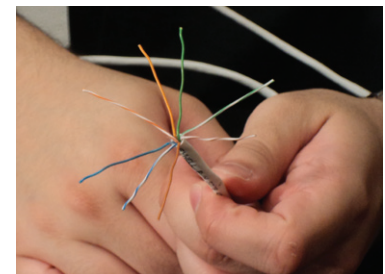
Cut the wire separator strands, separate the pairs and untwist them.



STEP 3

Now fan them out in the T568A pattern.

- White/Green
- Green
- White/Orange
- Blue
- White/Blue
- Orange
- White/Brown
- Brown

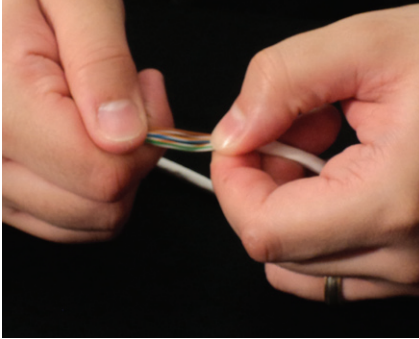


Terminating Cat 5 Cable

3. HOW TO STEP-BY-STEP CONT.

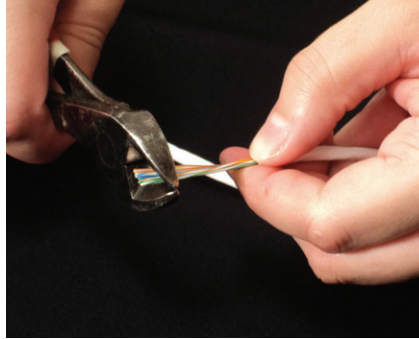
STEP 4

Lightly pinch the wires together to prepare for seating.



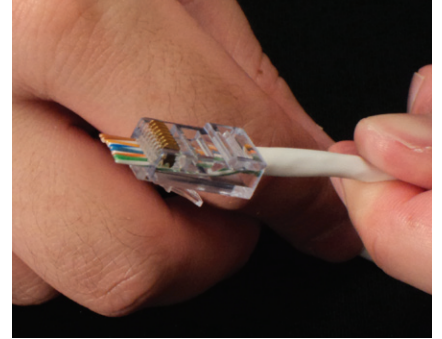
STEP 5

Confirm that the colors match the T568A pattern and trim so that all of the wires line up to fit in the RJ45 connector.



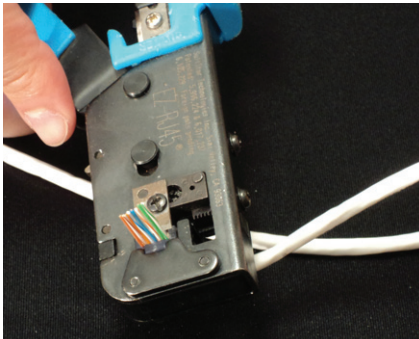
STEP 6

Slide the cable into the connector ensuring that:
Only one wire goes into each seat
The pins reach the end of the connector
The gold pin ends are neatly aligned
The jacket is inside of the connector



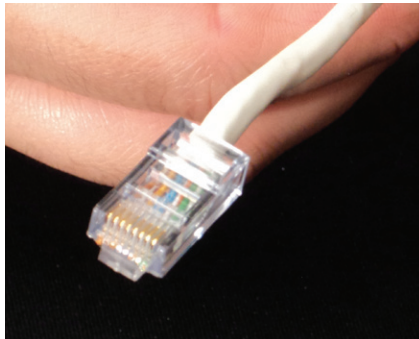
STEP 7

Insert the connector into the crimp tool and squeeze to set each of the pins.



STEP 8

Ensure that all eight gold pins are fully compressed.



STEP 9

We recommend that you always test the cable for continuity – simply plug each end into the tester and look for the green light on each tested pair.

