

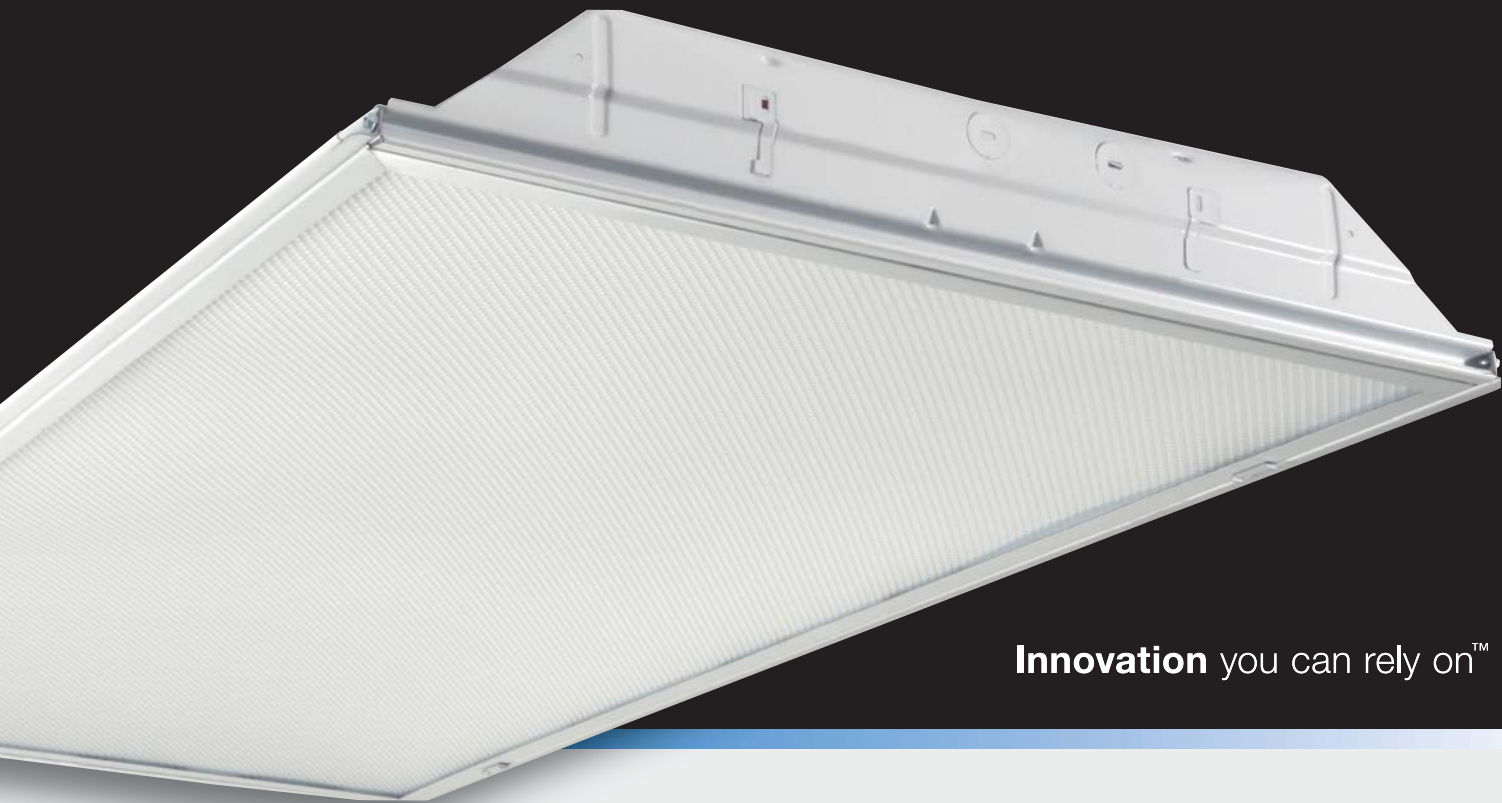
**GRLED Troffer**  
General Recessed Lensed

**Metalux**



**EATON**

*Powering Business Worldwide*



**Innovation** you can rely on™

Metalux's **GRLED** Lensed Troffers offers the ideal balance of LED performance and value. This new series delivers top-tier LED performance, maximizing your energy savings and reducing maintenance cost, while offering the simplicity of our most popular lensed troffer family. With features like spring-loaded hinged door assembly for easy access, GR LED provides the perfect fit for virtually all recessed applications.

## Construction

- Recessed: 2' x 2', 2' x 4' and 1' x 4'
- Depth: 3.25"
- Sustainable materials
- cULus damp location / IC Rated
- ROHS compliant
- Five-year warranty

## Performance

- New F1 - high performance frost .125 lens standard
- High-performance efficacy up to 117 lumens per watt
- Energy savings in excess of 50% compared to traditional fluorescent troffers
- Four Correlated Color Temperatures (3000K, 3500K, 4000K and 5000K) at typical 85 CRI
- 1' x 4': L85 @ 60,000 hrs.  
2' x 2': L86 @ 60,000 hrs.  
2' x 4': L84 @ 60,000 hrs.
- Binning: Per ANSI, 3-step MacAdam ellipse

## Options

- Five stocked lumen packages in either 3500K or 4000K CCT
  - 2' x 2': 2400 and 3200; 2' x 4': 3800, 4800 and 6400
  - Eighteen additional lumen packages offered as MTO
- Universal (120V/277V) or 347V
- Emergency – EL (700), EL10W (10 watts) and EL14 (1400)
- Surface mount kits
- Wide variety for door and lens options
- Flex wiring configurations
- Chicago plenum rated version

## Controls

- GRLED includes 0-10V (analog) dimming for control using Cooper Controls wall dimmers, Greengate Room Controllers, occupancy and/or daylight sensors, and lighting control panels.
- GRLED is available with native Fifth Light DALI drivers for complete digital energy management using the capable and scalable Fifth Light controllers and software.





# Ordering Information



Sample Number: 24GR-LD4-48-F1-UNV-L835-CD1-U

Rating	Series <sup>1, 11</sup>	Door Frame	LED Type	LED Lumens Output <sup>5</sup>		
[Blank]=Standard ATW-SW4=Chicago Rated	24GR=GRLED Series (2' x 4') 22GR=GRLED Series (2' x 2') 14GR=GRLED Series (1' x 4')	Standard=Flat White Steel Door (Leave Blank) FA=Flat White Extruded Aluminum c/w Spring Latch RA=Regressed White Extruded Aluminum FAN=Flush Natural Anodized Extruded Aluminum RAN=Regressed Natural Anodized Extruded Aluminum FAB=Flush Black Extruded Aluminum RAB=Regressed Black Extruded Aluminum	LD4=LED 4.0	<b>2' x 4'</b> Stock 38=3800 Lumens 48=4800 Lumens 64=6400 Lumens  MTO 30=3000 Lumens 34=3400 Lumens 42=4200 Lumens 56=5600 Lumens 72=7200 Lumens 85=8500 Lumens 90=9000 Lumens	<b>2' x 2'</b> Stock 24=2400 Lumens 32=3200 Lumens 43=4300 Lumens  MTO 20=2000 Lumens 28=2800 Lumens 36=3600 Lumens 40=4000 Lumens	<b>1' x 4'</b> MTO 20=2000 Lumens 24=2400 Lumens 28=2800 Lumens 32=3200 Lumens 36=3600 Lumens 40=4000 Lumens 43=4300 Lumens
Shielding		Voltage <sup>2</sup>	Options			
F1=A12 High Performance Frost .125 A=A12 .095 A125=A12 .125 A19/156=#19 Pattern Acrylic (.156" Thick)		UNV=Universal Voltage 120-277 <sup>3</sup>	GL=Single Element Fuse GM=Double Element Fuse	<b>Emergency</b> EL7W=7-watt, 120V-277V emergency battery pack installed <sup>8</sup> EL14W=14-watt 120V-277V emergency battery pack installed <sup>8</sup>	CCT L830=3000K L835=3500K L840=4000K L850=4000K	Flex Flex=Multiple Configurations Available
Driver Type	Number of Drivers	Options	Packaging	Accessories (Order Separately)		
CD=0-10V Dimming Driver (Standard) SD=Step-dim Driver <sup>10</sup> 5LTD=Fifth Light (DALI) Driver (10% - 100% Dimming) <sup>10</sup> 5LTHD=Fifth Light (DALI) Driver (1% - 100% Dimming) <sup>10</sup>	1=1 Driver 2=2 Drivers <sup>9</sup>	PAF=Painted After Fabrication G1=Gasket, Door Frame and Housing G2=G1 plus Gasket between Lens and Door G3=G1 and G2 plus Gasketing on Mounting Surface of Fixture Trims <sup>6, 7</sup>	U=Unit Pack PALC=Palletized Fixtures in Carton	EQ-CLIP-U=FBAR Safety Earthquake Clips <sup>1</sup> DF-22-W=2' x 2' Drywall Frame Kit DF-24-W=2' x 4' Drywall Frame Kit		

**NOTES:** 1. An EQ Grid Clip is recommended for all 9/16" ceiling systems. 2. Products also available in non-US voltage and frequencies for international markets. 3. Not available when specifying emergencies, voltage must be specific. 4. Call factory. 5. Nominal lumen output. 6. Gasketing only available with aluminum door frame. 7. Gasketing minimum .125. 8. With integral test switch/indicator/laser test. For approximate delivered lumens multiply the lumens per watt of the desired fixture by the wattage of the emergency battery pack (100 lm/W x 7=700 lumens). IES-format photometry for luminaire under emergency operation available. 9. Only available for 2' x 4'. 10. Step Dim (Bi Level) and DALI only available in 3200 lumen and above. 11. DesignLights Consortium™ Qualified and classified for DLC Standard, refer to [www.designlights.org](http://www.designlights.org) for details.

Specifications & dimensions subject to change without notice. Consult your Eaton Representative for availability and ordering information.

2' x 4' Lumen Maintenance		
Ambient Temperature	TM-21 Lumen Maintenance (60,000 hours)	Theoretical L70 (Hours)
25°C	> 84%	147,000

2' x 2' Lumen Maintenance		
Ambient Temperature	TM-21 Lumen Maintenance (60,000 hours)	Theoretical L70 (Hours)
25°C	> 86%	150,000

1' x 4' Lumen Maintenance		
Ambient Temperature	TM-21 Lumen Maintenance (60,000 hours)	Theoretical L70 (Hours)
25°C	> 85%	> 144,000

Certification Data					
cULus - Damp Location	IC Rated	LM79/LM80 Compliant	ROHS Compliant	DesignLights Consortium™ Qualified	NOM Compliant

**Our Lighting  
Product Lines**

Halo  
Halo Commercial  
Portfolio  
Iris  
RSA  
Metalux  
Corelite  
Neo-Ray  
Fail-Safe  
MWS  
Ametrix  
Shaper  
io  
Lumark  
McGraw-Edison  
Invue  
Lumière  
Streetworks  
AtLite  
Sure-Lites

**Our Controls  
Product Lines**

Greengate  
iLumin  
Zero 88  
Fifth Light Technology  
iLight (International Only)

**Eaton**  
1121 Highway 74 South  
Peachtree City, GA 30269  
P: 770-486-4800  
[www.eaton.com/lighting](http://www.eaton.com/lighting)

**Canada Sales**  
5925 McLaughlin Road  
Mississauga, Ontario L5R 1B8  
P: 905-501-3000  
F: 905-501-3172

© 2015 Eaton  
All Rights Reserved  
Printed in USA  
Publication No. ADF150147  
October 22, 2015

Eaton is a registered trademark.

All other trademarks are property  
of their respective owners.

Product availability, specifications,  
and compliances are subject to  
change without notice.