

# Pipe Straps

For Rigid Conduit & IMC

## Type 14-S

Use: To support Rigid Conduit and IMC.

Features: Snap type - double ribbed

Material/Finish: Steel/Zinc Plated

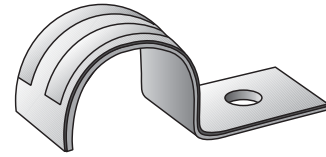
Applicable Third Party Standards:

Fed. Spec: FF-S-760

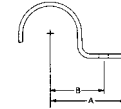
Note:

2½" through 4" sizes also suitable for EMT.

Trade Size (inches)	Steel Straps Catalog Number	Dimensions in Inches			Minimum Recommended Bolt Dia.
		A	B	C	
½	14-50S	2½	1¼	¾	¼
¾	14-75S	2¾	1½	¾	¼
1	14-100S	2¾	1½	¾	¼
1¼	14-125S	3½	1⅝	1	⅝
1½	14-150S	3⅝	1⅞	1⅞	⅝
2	14-200S	4¾	2½	1¼	⅝
2½	14-250S	6¾	2⅞	1¼	⅝
3	14-300S	6¾	3	1¼	⅝
3½	14-350S	7⅝	3⅞	1½	⅝
4	14-400S	8⅝	3⅞	1½	⅝



Type 14-S



## Type THR

Use: To support Rigid Conduit and IMC.

Features: Snap type - double ribbed

Material/Finish: Steel/Zinc Plated

Third Party Certification:



CSA Certified: 104691

½" through 2" sizes only

Applicable Third Party Standards:

CSA C22.2 No.18

Fed. Spec: FF-S-760

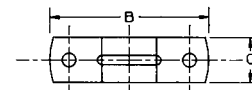
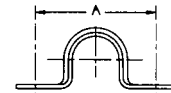
Note:

2½" through 4" sizes also suitable for EMT.

Trade Size (inches)	Steel Straps Catalog Number	Dimensions in Inches			Minimum Recommended Bolt Dia.
		A	B	C	
½	THR-50S	1¼	2¼	⅝	⅜
¾	THR-75S	1 <sup>27</sup> / <sub>32</sub>	2 <sup>5</sup> / <sub>16</sub>	¾	⅜
1	THR-100S	2 <sup>5</sup> / <sub>16</sub>	2 <sup>15</sup> / <sub>16</sub>	2 <sup>3</sup> / <sub>32</sub>	¼
1¼	THR-125S	2 <sup>15</sup> / <sub>16</sub>	3⅞	2 <sup>3</sup> / <sub>32</sub>	¼
1½	THR-150S	3 <sup>5</sup> / <sub>32</sub>	3 <sup>15</sup> / <sub>16</sub>	2 <sup>3</sup> / <sub>32</sub>	¼
2	THR-200S	4¼	5	2 <sup>3</sup> / <sub>32</sub>	¼
2½	THR-250S	4 <sup>11</sup> / <sub>16</sub>	5 <sup>23</sup> / <sub>32</sub>	1	⅝
3	THR-300S	5 <sup>11</sup> / <sub>16</sub>	6¾	1	⅝
3½	THR-350S	6 <sup>5</sup> / <sub>16</sub>	7 <sup>5</sup> / <sub>16</sub>	1	⅝
4	THR-400S	6 <sup>27</sup> / <sub>32</sub>	7 <sup>13</sup> / <sub>16</sub>	1	⅝



Type THR



## Type 14-G

Use:

To support Rigid Conduit and IMC.

Material/Finish:

Malleable Iron/Hot Dipped Galvanized

Third Party Certification:



CSA Certified: 009795.

Applicable Third Party Standards:

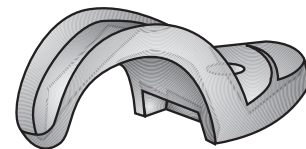
CSA: C22.2 No.18

Fed. Spec: FF-S-760

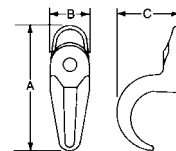
Note:

2½" through 4" sizes also suitable for EMT.

Malleable Straps Catalog Number	Conduit Size Inches	Dimensions in Inches			Minimum Recommended Bolt Dia.
		A	B	C	
14-18G	⅛	1 <sup>5</sup> / <sub>16</sub>	½	½	#10
14-25G	¼	1 <sup>19</sup> / <sub>32</sub>	1 <sup>9</sup> / <sub>32</sub>	⅝	¼
14-38G	⅜	1¼	⅝	¾	¼
14-50G	½	2¼	2 <sup>1</sup> / <sub>32</sub>	1 <sup>1</sup> / <sub>16</sub>	¼
14-75G	¾	2 <sup>9</sup> / <sub>16</sub>	¾	1 <sup>1</sup> / <sub>32</sub>	¼
14-100G	1	3 <sup>1</sup> / <sub>16</sub>	1 <sup>1</sup> / <sub>16</sub>	1½	¼
14-125G	1¼	3 <sup>1</sup> / <sub>16</sub>	7 <sup>1</sup> / <sub>8</sub>	1⅞	⅝
14-150G	1½	6¼	1	2⅞	⅝
14-200G	2	5 <sup>1</sup> / <sub>16</sub>	1⅞	2 <sup>1</sup> / <sub>16</sub>	½
14-250G	2½	5 <sup>5</sup> / <sub>16</sub>	1⅞	3 <sup>1</sup> / <sub>16</sub>	½
14-300G	3	7 <sup>1</sup> / <sub>16</sub>	1⅞	3 <sup>1</sup> / <sub>16</sub>	½
14-350G	3½	8 <sup>1</sup> / <sub>16</sub>	1 <sup>13</sup> / <sub>16</sub>	4 <sup>3</sup> / <sub>8</sub>	⅝
14-400G	4	8 <sup>1</sup> / <sub>16</sub>	2	5	⅝
14-500G	5	10 <sup>19</sup> / <sub>16</sub>	2¾	6½	⅝
14-600G	6	12½	3⅞	7½	1



Type 14-G



# Pipe Straps

For Rigid Conduit & IMC

## Type 14-S

Use: To support Rigid Conduit and IMC.

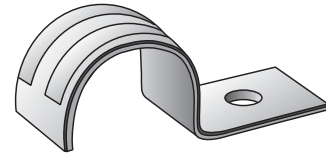
Features: Snap type - double ribbed

Material/Finish: Steel/Zinc Plated

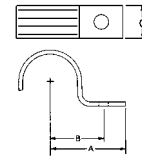
Applicable Third Party Standards:  
Fed. Spec: FF-S-760

Note:  
2½" through 4" sizes also suitable for EMT.

Trade Size (inches)	Steel Straps Catalog Number	Dimensions in Inches			Minimum Recommended Bolt Dia.
		A	B	C	
½	14-50S	2½	1¼	¾	¼
¾	14-75S	2¾	1½	¾	¼
1	14-100S	2¾	1½	¾	¼
1¼	14-125S	3½	1⅝	1	⅝
1½	14-150S	3⅝	1⅜	1⅝	⅜
2	14-200S	4¾	2⅝	1¼	⅜
2½	14-250S	6¾	2⅝	1¼	½
3	14-300S	6¾	3	1¼	½
3½	14-350S	7⅝	3⅝	1½	⅝
4	14-400S	8⅝	3⅝	1½	⅝



Type 14-S



## Type THR

Use: To support Rigid Conduit and IMC.

Features: Snap type - double ribbed

Material/Finish: Steel/Zinc Plated

Third Party Certification:  
CSA Certified: 104691  
½" through 2" sizes only

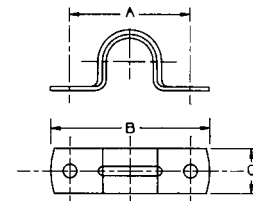
Applicable Third Party Standards:  
CSA C22.2 No.18  
Fed. Spec: FF-S-760

Note:  
2½" through 4" sizes also suitable for EMT.

Trade Size (inches)	Steel Straps Catalog Number	Dimensions in Inches			Minimum Recommended Bolt Dia.
		A	B	C	
½	THR-50S	1¼	2¼	⅝	⅜
¾	THR-75S	1 <sup>27</sup> / <sub>32</sub>	2 <sup>5</sup> / <sub>16</sub>	¾	⅜
1	THR-100S	2 <sup>5</sup> / <sub>16</sub>	2 <sup>15</sup> / <sub>16</sub>	2 <sup>3</sup> / <sub>32</sub>	¼
1¼	THR-125S	2 <sup>15</sup> / <sub>16</sub>	3⅝	2 <sup>3</sup> / <sub>32</sub>	¼
1½	THR-150S	3 <sup>5</sup> / <sub>32</sub>	3 <sup>15</sup> / <sub>16</sub>	2 <sup>3</sup> / <sub>32</sub>	¼
2	THR-200S	4¼	5	2 <sup>3</sup> / <sub>32</sub>	¼
2½	THR-250S	4 <sup>11</sup> / <sub>16</sub>	5 <sup>23</sup> / <sub>32</sub>	1	⅝
3	THR-300S	5 <sup>11</sup> / <sub>16</sub>	6¾	1	⅝
3½	THR-350S	6 <sup>5</sup> / <sub>16</sub>	7 <sup>5</sup> / <sub>16</sub>	1	⅝
4	THR-400S	6 <sup>27</sup> / <sub>32</sub>	7 <sup>13</sup> / <sub>16</sub>	1	⅝



Type THR



## Type 14-G

Use:  
To support Rigid Conduit and IMC.

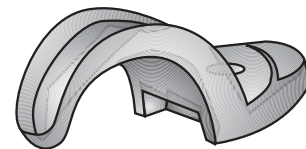
Material/Finish:  
Malleable Iron/Hot Dipped Galvanized

Third Party Certification:  
CSA Certified: 009795.

Applicable Third Party Standards:  
CSA: C22.2 No.18  
Fed. Spec: FF-S-760

Note:  
2½" through 4" sizes also suitable for EMT.

Malleable Straps Catalog Number	Conduit Size Inches	Dimensions in Inches			Minimum Recommended Bolt Dia.
		A	B	C	
14-18G	⅝	1 <sup>15</sup> / <sub>16</sub>	½	½	#10
14-25G	¾	1 <sup>19</sup> / <sub>32</sub>	1 <sup>9</sup> / <sub>32</sub>	⅝	¼
14-38G	⅝	1¼	⅝	¾	¼
14-50G	½	2¼	2 <sup>1</sup> / <sub>32</sub>	1 <sup>15</sup> / <sub>16</sub>	¼
14-75G	¾	2 <sup>9</sup> / <sub>16</sub>	¾	1 <sup>1</sup> / <sub>32</sub>	¼
14-100G	1	3 <sup>1</sup> / <sub>16</sub>	1 <sup>1</sup> / <sub>16</sub>	1½	¼
14-125G	1¼	3 <sup>1</sup> / <sub>16</sub>	7 <sup>1</sup> / <sub>8</sub>	1⅝	⅝
14-150G	1½	6¼	1	2⅝	⅝
14-200G	2	5 <sup>1</sup> / <sub>16</sub>	1⅝	2 <sup>1</sup> / <sub>16</sub>	½
14-250G	2½	5 <sup>5</sup> / <sub>16</sub>	1⅝	3 <sup>1</sup> / <sub>16</sub>	½
14-300G	3	7 <sup>1</sup> / <sub>16</sub>	1⅝	3 <sup>1</sup> / <sub>16</sub>	½
14-350G	3½	8 <sup>1</sup> / <sub>16</sub>	1 <sup>13</sup> / <sub>16</sub>	4⅝	⅝
14-400G	4	8 <sup>1</sup> / <sub>16</sub>	2	5	⅝
14-500G	5	10 <sup>19</sup> / <sub>16</sub>	2¾	6½	⅝
14-600G	6	12½	3⅝	7½	1



Type 14-G

