

Polycarbonate Boxes

Carlton® Black Polycarbonate Boxes

Carlton® non-metallic boxes feature a rugged polycarbonate construction to withstand extreme temperatures. The boxes will not distort or soften in heat and they won't become brittle in the cold.

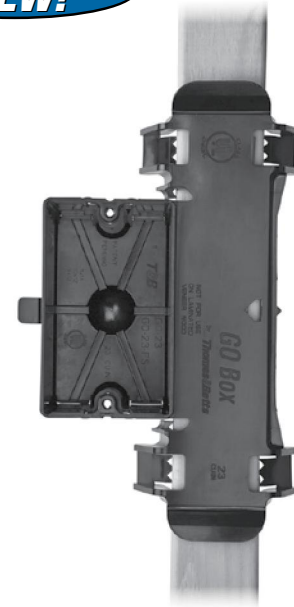
- All Polycarbonate boxes are listed to UL514C
- All Polycarbonate boxes are listed for masonry walls
- All Polycarbonate boxes are UL® Classified for 2-hr. fire wall and/or fire ceiling
- All Polycarbonate boxes meet NEMA OS-2
- All Polycarbonate boxes are permissible for use with 90° C conductors
- UL® File E11461 and R9140

Grip-On GO Box® Single-Gang Outlet Box

- Instead of nails or other fasteners, unique clamps are used to hold the box securely in place. Simply push onto the stud and go
- The GO Box® outlet box is removable for easy repositioning
- "Fast-Set" mounting holes enable quick installation of devices
- Perfectly aligned every time
- Perfect for drywall depth
- A locator hole in the mounting bracket helps position the box on marked studs for accurate installation

- The GO Box® design is UL® Listed
- 23.0 cu. in. capacity accommodates large devices and enables easy installation of wiring

It's a whole new ball game for high-volume residential products. That's because the Carlton® GO Box® product line is one of the most revolutionary labor-saving products ever designed. The GO stands for "Grip-On" and that's exactly how it works. Just push the box onto a stud and the specially designed clamps hold it in place. No tools or fasteners are required, reducing installation time, which means you can move on to the next job. When it comes to lower installed costs, this changes everything!



One-Gang 23.0 Cu. In.



| CAT. NO. | SIZE CU. IN. | MOUNTING MEANS | DESCRIPTION | DIMENSIONS (IN.) | STD. CTN. |
|----------|--------------|-----------------|-------------|--------------------|-----------|
| GO-23 | 23.0 | Grip-On Bracket | — | 3¼ L x 2¼ W x 2½ D | 30 |
| GO-23-FS | 23.0 | Grip-On Bracket | Fast-Set | 3¼ L x 2¼ W x 2½ D | 30 |

One-Gang Nail-On 18.0–22.5 Cu. In.



| CAT. NO. | SIZE CU. IN. | MOUNTING MEANS | DESCRIPTION | DIMENSIONS (IN.) | STD. CTN. |
|----------|--------------|-------------------|-------------|--------------------|-----------|
| 118-N | 18.0 | Angled Side Nails | — | 3¼ L x 2¼ W x 2½ D | 100 |
| 120-N | 20.3 | Angled Side Nails | — | 3¼ L x 2¼ W x 3⅜ D | 100 |
| 120-N-FS | 20.3 | Angled Side Nails | Fast-Set | 3¼ L x 2¼ W x 3⅜ D | 100 |
| 122-N | 22.5 | Angled Side Nails | — | 3¼ L x 2¼ W x 3⅜ D | 100 |
| 122-N-FS | 22.5 | Angled Side Nails | Fast-Set | 3¼ L x 2¼ W x 3⅜ D | 100 |

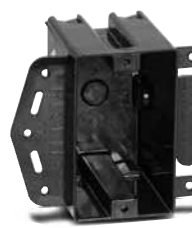
Polycarbonate Boxes

New Work Boxes

One-Gang Brackets 18.0–22.5 Cu. In.



| CAT. NO. | SIZE CU. IN. | MOUNTING MEANS | DESCRIPTION | DIMENSIONS (IN.) | STD. CTN. |
|----------|--------------|--|--------------------|--------------------|-----------|
| 118-LB | 18.0 | Molded Side Bracket for Wood/Steel Studs | — | 3¾ L x 2¼ W x 2¾ D | 100 |
| 118-LBP | 18.0 | Molded Side Bracket for Wood/Steel Studs | POSI-SET® Fast-Set | 3¾ L x 2¼ W x 2¾ D | 100 |
| 120-LB | 20.3 | Molded Side Bracket for Wood/Steel Studs | — | 3¾ L x 2¼ W x 3⅝ D | 100 |
| 120-LBP | 20.3 | Molded Side Bracket for Wood/Steel Studs | POSI-SET® Fast-Set | 3¾ L x 2¼ W x 3⅝ D | 100 |
| 122-LB | 22.5 | Molded Side Bracket for Wood/Steel Studs | — | 3¾ L x 2¼ W x 3⅝ D | 100 |
| 122-LBP | 22.5 | Molded Side Bracket for Wood/Steel Studs | POSI-SET® Fast-Set | 3¾ L x 2¼ W x 3⅝ D | 100 |



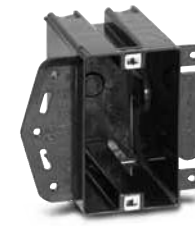
118-LB



118-LBP



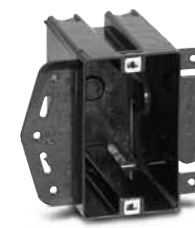
120-LB



120-LBP



122-LB



122-LBP

Two-Gang Nail-On 34.0 Cu. In.



| CAT. NO. | SIZE CU. IN. | MOUNTING MEANS | DESCRIPTION | DIMENSIONS (IN.) | STD. CTN. |
|----------|--------------|-------------------|--------------------------|-------------------|-----------|
| 234-N | 34.0 | Angled Side Rails | POSI-WEDGE® Cable Clamps | 3¾ L x 4 W x 3⅝ D | 50 |
| 234-NP | 34.0 | Angled Side Rails | POSI-WEDGE® POSI-SET® | 3¾ L x 4 W x 3⅝ D | 50 |



234-N



234-NP

Two-Gang Bracket 34.0 Cu. In.



| CAT. NO. | SIZE CU. IN. | MOUNTING MEANS | DESCRIPTION | DIMENSIONS (IN.) | STD. CTN. |
|----------|--------------|---|--------------------------|-------------------|-----------|
| 234-LB | 34.0 | Steel Side Bracket for Wood/Steel Studs | POSI-WEDGE® Cable Clamps | 3¾ L x 4 W x 3⅝ D | 50 |



234-LB

Boxes & Covers — Carlton® Non-Metallic Boxes

Polycarbonate Boxes

New Work Boxes

Boxes & Covers — Carlton® Non-Metallic Boxes

Three-Gang Nail-On 45.0 Cu. In.

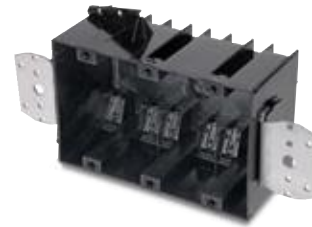
| CAT. NO. | SIZE CU. IN. | MOUNTING MEANS | DESCRIPTION | DIMENSIONS (IN.) | STD. CTN. |
|----------|--------------|---|--------------------------|--------------------|-----------|
| 345-N | 45.0 | Angled Side Nails & Steel Side Brackets | POSI-WEDGE® Cable Clamps | 3¾ L x 5¼ W x 2¼ D | 20 |



345-N

Three-Gang Bracket 45 Cu. In.

| CAT. NO. | SIZE CU. IN. | MOUNTING MEANS | DESCRIPTION | DIMENSIONS (IN.) | STD. CTN. |
|----------|--------------|---|--------------------------|--------------------|-----------|
| 345-LB | 45.0 | Steel Side Bracket for Wood/Steel Studs | POSI-WEDGE® Cable Clamps | 3¾ L x 5¼ W x 2¼ D | 25 |



345-LB

Four-Gang Nail-On 60 Cu. In.

| CAT. NO. | SIZE CU. IN. | MOUNTING MEANS | DESCRIPTION | DIMENSIONS (IN.) | STD. CTN. |
|--------------|--------------|----------------------------------|--------------------------|--------------------|-----------|
| 460-SB | 60.0 | Angled Side Nails & Back Bracket | POSI-WEDGE® Cable Clamps | 3¾ L x 7¼ W x 2¼ D | 10 |
| 460-SB-24 ** | 60.0 | Angled Side Nails & Back Bracket | POSI-WEDGE® Cable Clamps | 3¾ L x 7¼ W x 2¼ D | 10 |

• 24" adjustable bracket.

* Not UL Classified for fire wall and/or fire ceiling



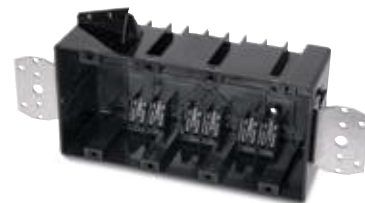
460-SB

460-SB-24

Four-Gang Bracket 60 Cu. In.

| CAT. NO. | SIZE CU. IN. | MOUNTING MEANS | DESCRIPTION | DIMENSIONS (IN.) | STD. CTN. |
|----------|--------------|---------------------|--------------------------|--------------------|-----------|
| 460-LB | 60.0 | Steel Side Brackets | POSI-WEDGE® Cable Clamps | 3¾ L x 7¼ W x 2¼ D | 8 |

* Not UL Classified for fire wall and/or fire ceiling



460-LB

Polycarbonate Boxes

New Work Box

4" Square Boxes 32.0 Cu. In.



| CAT. NO. | SIZE CU. IN. | MOUNTING MEANS | DESCRIPTION | DIMENSIONS (IN.) | STD. CTN. |
|----------|-----------------|-------------------|-----------------------------|--|--------------|
| 4S-32-N | 32.0 | Angled Side Nails | POSI-WEDGE® Cable Clamps | 4 L x 4 W x 3 ³ / ₁₆ D | 50 |



4S-32-N

Old Work Boxes

One-Gang 14.0 Cu. In.



| CAT. NO. | SIZE CU. IN. | MOUNTING MEANS | DESCRIPTION | DIMENSIONS (IN.) | STD. CTN. |
|----------|-----------------|--------------------|-------------|---|--------------|
| 114-OW | 14.0 | Swing-Ear Brackets | — | 3 ³ / ₄ L x 2 ¹ / ₄ W x 3 D | 50 |

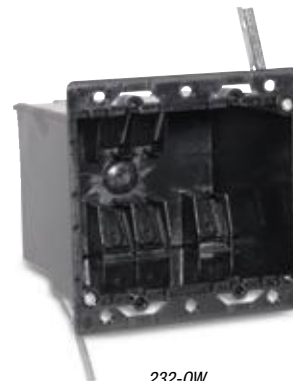


114-OW

Two-Gang 32.0 Cu. In.



| CAT. NO. | SIZE CU. IN. | MOUNTING MEANS | DESCRIPTION | DIMENSIONS (IN.) | STD. CTN. |
|----------|-----------------|-----------------------|-----------------------------|---|--------------|
| 232-OW | 32.0 | Swing-Ear Brackets | POSI-WEDGE® Cable Clamps | 3 ³ / ₈ L x 4 ¹ / ₁₆ W x 3 ³ / ₁₆ D | 50 |



232-OW

Boxes & Covers — Carlton® Non-Metallic Boxes

Polycarbonate Boxes

Energy-Efficient Vapor Barrier Boxes

Vapor-barrier boxes are designed to meet the energy-efficiency requirements of modern homes. They feature a drywall flange covered with a foam gasket and additional gaskets over the cable entry points. These gaskets provide a vapor-tight seal, preventing the free flow of air through the box. This helps control heating costs in the winter and cooling costs in the summer.

- High-strength polycarbonate construction — will not shatter when cold or distort in heat
- V-clamps provide self-clamping cable entry (multi-gang and fan/fixture box)
- ½" offset flange to ensure a flush fit in ½" drywall
- Angled side nails for rapid installation
- Pre-drilled flanges for additional mounting options



FN-23



FN-236-V



FN-354-V



FN-460-V

One-, Two-, Three- and Four-Gang



| CAT. NO. | SIZE CU. IN. | MOUNTING MEANS | DESCRIPTION | DIMENSIONS (IN.) | STD. CTN. |
|-----------|--------------|-------------------|---------------|--------------------|-----------|
| FN-23 | 22.5 | Angled Side Nails | Vapor Barrier | 3½ L x 2¼ W x 3⅝ D | 50 |
| FN-236-V | 36.0 | Angled Side Nails | Vapor Barrier | 3½ x 4 x 3¼ D | 50 |
| FN-354-V | 54.0 | Angled Side Nails | Vapor Barrier | 3½ x 5⅝ x 3¼ D | 20 |
| FN-460-V* | 60.0 | Angled Side Nails | Vapor Barrier | 3½ x 7½ x 2¼ D | 10 |

*Not UL Classified for fire wall and/or fire ceiling.

Ceiling Fixture Box 26.0 Cu. In.



| CAT. NO. | SIZE CU. IN. | MOUNTING MEANS | DESCRIPTION | DIMENSIONS (IN.) | STD. CTN. |
|------------|--------------|-------------------|-------------|------------------|-----------|
| FN-426-C-V | 26.0 | Angled Side Nails | — | 4 L x 4 W x 2¼ D | 50 |

Listed for fixture support up to 50 lbs.



FN-426-C-V

Ceiling Fan/Fixture 26.0 Cu. In.



| CAT. NO. | SIZE CU. IN. | MOUNTING MEANS | DESCRIPTION | DIMENSIONS (IN.) | STD. CTN. |
|----------|--------------|----------------|-------------|------------------|-----------|
| FN-CFB | 26.0 | #3 Bracket | — | 4 L x 4 W x 2¼ D | 50 |

Listed for fan support up to 35 lbs. and fixture support up to 50 lbs.



FN-CFB

Voltage Partition



| CAT. NO. | DESCRIPTION | STD. CTN. |
|----------|---|-----------|
| FNP | Voltage Partition for NG & FN Series Multi-Gang Boxes | 50 |

Polycarbonate Boxes

Saddle-Type Fan/Fixture 16.0 Cu. In.



| CAT. NO. | SIZE CU. IN. | MOUNTING MEANS | DESCRIPTION | DIMENSIONS (IN.) | STD. CTN. |
|----------|-----------------|----------------|---------------------|--|--------------|
| CFB-16-F | 16.0 | Center Screw | Ceiling Fan/Fixture | 4 L x 4 W x 3 ³ / ₁₆ D | 50 |

Listed for fan support up to 70 lbs. and fixture support up to 70 lbs.



CFB-16-F

Universal Flanged Nail-On Boxes



Two-, Three- and Four-Gang

| CAT. NO. | SIZE CU. IN. | MOUNTING MEANS | DESCRIPTION | DIMENSIONS (IN.) | STD. CTN. |
|-------------|-----------------|-------------------|-------------|---|--------------|
| NG-236-V • | 36.0 | Angled Side Nails | 2-Gang Wall | 3 ¹ / ₂ L x 4 W x 3 ¹ / ₄ D | 50 |
| NG-354-V • | 54.0 | Angled Side Nails | 3-Gang Wall | 3 ¹ / ₂ L x 5 ³ / ₄ W x 3 ¹ / ₄ D | 20 |
| NG-460-V •* | 60.0 | Angled Side Nails | 4-Gang Wall | 3 ¹ / ₂ L x 7 ¹ / ₂ W x 2 ³ / ₄ D | 10 |

• NG Boxes have 1/2" offset wallboard flange and V-type cable entry.

* Not UL Classified for fire wall and/or fire ceiling.



NG-236-V



NG-354-V



NG-460-V

Voltage Partition



| CAT. NO. | DESCRIPTION | STD. CTN. |
|----------|---|--------------|
| FNP | Voltage Partition for NG & FN Series Multi-Gang Boxes | 50 |

Boxes & Covers — Carlton® Non-Metallic Boxes

Polycarbonate Boxes

Ceiling Boxes

All ceiling boxes are produced from a high heat-resistant material developed specifically for fixture support applications.

- Meets NEMA OS-2
- UL Listed to UL 514C



N-321-GC



N-321-C



3½" 20.5 Cu. In.

| CAT. NO. | SIZE CU. IN. | MOUNTING MEANS | DESCRIPTION | DIMENSIONS (IN.) | STD. CTN. |
|------------|--------------|-------------------|--|------------------|-----------|
| N-321-C • | 20.5 | Angled Side Nails | Molded Fast Clamps | 3½ Dia. x 3¼ D | 50 |
| N-321-GC • | 20.5 | Angled Side Nails | Molded Fast Clamps, Ground Strap Installed | 3½ Dia. x 3¼ D | 50 |

- Listed for fixture support up to 50 lbs.



N-423-C-V



N-423-GC-V



4" 22.5 Cu. In.

| CAT. NO. | SIZE CU. IN. | MOUNTING MEANS | DESCRIPTION | DIMENSIONS (IN.) | STD. CTN. |
|--------------|--------------|-------------------|--------------------|------------------|-----------|
| N-423-C-V • | 22.5 | Angled Side Nails | Molded V-Clamps | 4 Dia. x 2½ D | 50 |
| N-423-GC-V • | 22.5 | Angled Side Nails | Molded Fast Clamps | 4 Dia. x 2½ D | 50 |

- Listed for fixture support up to 50 lbs.

Polycarbonate Boxes

Boxes & Covers — Carlton® Non-Metallic Boxes



B518P-UPC



3/0 18 Cu. In.

| CAT. NO. | SIZE CU. IN. | MOUNTING MEANS | DESCRIPTION | DIMENSIONS (IN.) | STD. CTN. |
|-------------|--------------|----------------|-------------------------------|------------------|-----------|
| B518A-UPC • | 18.0 | Captive Nails | — | 3 Dia. x 2¾ D | 75 |
| B518P-UPC • | 18.0 | Captive Nails | Ground Lug and Screw Attached | 3 Dia. x 2¾ D | 75 |

• Listed for fixture support up to 50 lbs.



B520A-UPC



B620L-UPC



B520P-UPC



B720R-SHK
35 lbs. maximum fan weight



3/0-4/0 Combination 20 Cu. In.

| CAT. NO. | SIZE CU. IN. | MOUNTING MEANS | DESCRIPTION | DIMENSIONS (IN.) | STD. CTN. |
|-------------|--------------|-----------------|---|------------------|-----------|
| B520A-UPC • | 20.0 | Captive Nails | Ground Lug and Screw Attached Fixture Spacing for 2¾" and 3" | 4 Dia. x 2¼ D | 75 |
| B520P-UPC • | 20.0 | Captive Nails | Ground Lug and Screw Attached | 4 Dia. x 2¼ D | 75 |
| B620L-UPC • | 20.0 | Metal L Bracket | Fixture Spacing for 2¾" and 3½" | 4 Dia. x 2¼ D | 100 |
| B720R-SHK • | 20.0 | Mounting Screws | — | 4 Dia. x 2¼ D | 18 |

• Listed for fixture support up to 50 lbs.

Polycarbonate Boxes

Ceiling Boxes with Bar Hanger

- Meets NEMA OS-2



N-321-C-94



N-321-GC-94



N-321-C-95



N-321-GC-95

3½" 20.5 Cu. In.



| CAT. NO. | SIZE CU. IN. | MOUNTING MEANS | DESCRIPTION | DIMENSIONS (IN.) | STD. CTN. |
|---------------|--------------|------------------------------------|--|------------------|-----------|
| N-321-C-94 • | 20.5 | 16" Bar Hanger, 12¼" Min.–19" Max. | Molded Fast Clamps | 3½ Dia. x 3½ D | 50 |
| N-321-GC-94 • | 20.5 | 16" Bar Hanger, 12¼" Min.–19" Max. | Molded Fast Clamps, Ground Strap Installed | 3½ Dia. x 3½ D | 50 |
| N-321-C-95 • | 20.5 | 24" Bar Hanger, 16½" Min.–27" Max. | Molded Fast Clamps | 3½ Dia. x 3½ D | 50 |
| N-321-GC-95 • | 20.5 | 24" Bar Hanger, 16½" Min.–27" Max. | Molded Fast Clamps, Ground Strap Installed | 3½ Dia. x 3½ D | 50 |

- Listed for fixture support up to 50 lbs.



N-423-C-94-V



N-423-GC-94-V



N-423-C-95-V



N-423-GC-95-V

4" 22.5 Cu. In.



| CAT. NO. | SIZE CU. IN. | MOUNTING MEANS | DESCRIPTION | DIMENSIONS (IN.) | STD. CTN. |
|-----------------|--------------|------------------------------------|--|------------------|-----------|
| N-423-C-94-V • | 22.5 | 16" Bar Hanger, 12¼" Min.–19" Max. | Molded Fast Clamps | 4 Dia. x 2½ D | 50 |
| N-423-GC-94-V • | 22.5 | 16" Bar Hanger, 12¼" Min.–19" Max. | Molded Fast Clamps, Ground Strap Installed | 4 Dia. x 2½ D | 50 |
| N-423-C-95-V • | 22.5 | 24" Bar Hanger, 16½" Min.–27" Max. | Molded Fast Clamps | 4 Dia. x 2½ D | 50 |
| N-423-GC-95-V • | 22.5 | 24" Bar Hanger, 16½" Min.–27" Max. | Molded Fast Clamps, Ground Strap Installed | 4 Dia. x 2½ D | 50 |

- Listed for fixture support up to 50 lbs.

Polycarbonate Boxes

Boxes & Covers — Carlton® Non-Metallic Boxes



B620DC



B620HG-UPC



B620K



B620H-UPC



B620KG-UPC

3/0-4/0 Combination 20.0 Cu. In.



| CAT. NO. | SIZE CU. IN. | MOUNTING MEANS | DESCRIPTION | DIMENSIONS (IN.) | STD. CTN. |
|--------------|-----------------|---|---|------------------|--------------|
| B620DC • | 20.0 | 24" T-Grid Bar Hanger | Ceiling Box Fixture Spacing for 2¾" and 3½" | 4 Dia. x 2¼ D | 18 |
| B620HG-UPC • | 20.0 | 11.50"-14.50" Adjustable Bar Hanger Ground Lug and Screw Attached | Ceiling Box Fixture Spacing for 2¾" and 3½" | 4 Dia. x 2¼ D | 75 |
| B620H-UPC • | 20.0 | 11.50"-14.50" Adjustable Bar Hanger | Ceiling Box Fixture Spacing for 2¾" and 3½" | 4 Dia. x 2¼ D | 75 |
| B620K • | 20.0 | 14.38"-22.50" Adjustable Bar Hanger | Ceiling Box Fixture Spacing for 2¾" and 3½" | 4 Dia. x 2¼ D | 75 |
| B620KG-UPC • | 20.0 | 14.38"-22.50" Adjustable Bar Hanger Ground Lug and Screw Attached | Ceiling Box Fixture Spacing for 2¾" and 3½" | 4 Dia. x 2¼ D | 75 |

• Listed for fixture support up to 50 lbs.

Polycarbonate Boxes

Ceiling Boxes



3R-16-N



3R-16-NGP

3½" Nail-On 16.0 Cu. In.



| CAT. NO. | SIZE CU. IN. | MOUNTING MEANS | DESCRIPTION | DIMENSIONS (IN.) | STD. CTN. |
|-------------|--------------|----------------|--------------------------|------------------|-----------|
| 3R-16-N • | 16.0 | Angled Nails | POSI-WEDGE® Cable Clamps | 2¼ | 50 |
| 3R-16-NGP • | 16.0 | Angled Nails | POSI-WEDGE® Cable Clamps | 2¼ | 50 |

• Listed for fixture support up to 50 lbs.



3R-16-BH



3R-16-BHGP

3½" Ceiling Box with Bar Hanger 16.0 Cu. In.



| CAT. NO. | SIZE CU. IN. | MOUNTING MEANS | DESCRIPTION | DIMENSIONS (IN.) | STD. CTN. |
|--------------|--------------|-------------------------------|--------------------------|------------------|-----------|
| 3R-16-BH • | 16.0 | Adjustable 16"–24" Bar Hanger | POSI-WEDGE® Cable Clamps | 2¼ | 25 |
| 3R-16-BHGP • | 16.0 | Adjustable 16"–24" Bar Hanger | POSI-WEDGE® Cable Clamps | 2¼ | 25 |

• Listed for fixture support up to 50 lbs.

NEW!



3R-16-N-RED

3½" Fire Alarm Nail-On 16.0 Cu. In.



| CAT. NO. | SIZE CU. IN. | MOUNTING MEANS | DESCRIPTION | DIMENSIONS (IN.) | STD. CTN. |
|---------------|--------------|----------------|--------------------------|------------------|-----------|
| 3R-16-N-RED • | 16.0 | Angled Nails | POSI-WEDGE® Cable Clamps | 2¼ | 50 |

• Red ceiling box for fire alarm applications.

• Listed for fixture support up to 50 lbs.

Polycarbonate Boxes

Saddle-Type Ceiling Fan Boxes

Boxes & Covers — Carlton® Non-Metallic Boxes



CFB-12



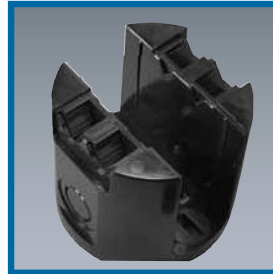
Easy press-fit onto the joist. Integrally molded ribs grip the joist and stop the box from falling.



Just one hand is required to mount the box using the pre-located mounting screw.



CFB-16



Integrally molded cable V-clamps provide easy and secure clamping for non-metallic cables.



CFB-16 features 1/2" KOs in addition to V-clamps.

Saddle-Type Fan 12.0–16.0 Cu. In.



| CAT. NO. | SIZE CU. IN. | MOUNTING MEANS | DEPTH (IN.) | STD. CTN. |
|----------|--------------|---|-------------|-----------|
| CFB-12 • | 12.0 | Non-Metallic Saddle-Type Ceiling Fan Box with V-Clamps for Non-Metallic Sheathed Cable | 2 1/4 | 50 |
| CFB-16 • | 16.0 | Non-Metallic Saddle-Type Ceiling Fan Box with V-Clamps for Non-Metallic Sheathed Cable and Two 1/2" KOs | 2 1/4 | 50 |

• Listed for fan support up to 70 lbs. and fixture support up to 70 lbs.

Old Work

4" Round 18.0 Cu. In.



| CAT. NO. | SIZE CU. IN. | MOUNTING MEANS | DESCRIPTION | DIMENSIONS (IN.) | STD. CTN. |
|--------------|--------------|----------------|-------------|------------------|-----------|
| B618R-UPC • | 18.0 | Swing Clamps | — | 4 1/4 Dia. | 100 |
| B618RP-UPC • | 18.0 | Swing Clamps | Ground Lug | 4 1/4 Dia. | 100 |

• Not UL Classified for Fire Resistance or used for fixture support in the ceiling.



B618R-UPC

Polycarbonate Boxes

Carlton® Black Polycarbonate Boxes

Carlton® non-metallic boxes feature a rugged polycarbonate construction to withstand extreme temperatures. The boxes will not distort or soften in heat and they won't become brittle in the cold.

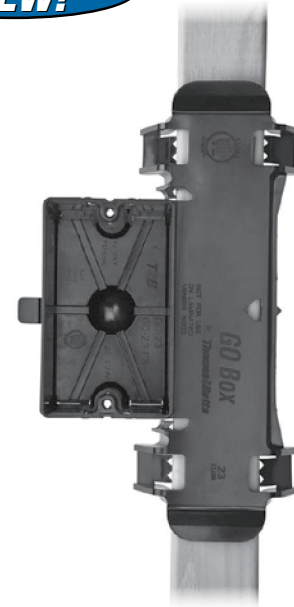
- All Polycarbonate boxes are listed to UL514C
- All Polycarbonate boxes are listed for masonry walls
- All Polycarbonate boxes are UL® Classified for 2-hr. fire wall and/or fire ceiling
- All Polycarbonate boxes meet NEMA OS-2
- All Polycarbonate boxes are permissible for use with 90° C conductors
- UL® File E11461 and R9140

Grip-On GO Box® Single-Gang Outlet Box

- Instead of nails or other fasteners, unique clamps are used to hold the box securely in place. Simply push onto the stud and go
- The GO Box® outlet box is removable for easy repositioning
- "Fast-Set" mounting holes enable quick installation of devices
- Perfectly aligned every time
- Perfect for drywall depth
- A locator hole in the mounting bracket helps position the box on marked studs for accurate installation

- The GO Box® design is UL® Listed
- 23.0 cu. in. capacity accommodates large devices and enables easy installation of wiring

It's a whole new ball game for high-volume residential products. That's because the Carlton® GO Box® product line is one of the most revolutionary labor-saving products ever designed. The GO stands for "Grip-On" and that's exactly how it works. Just push the box onto a stud and the specially designed clamps hold it in place. No tools or fasteners are required, reducing installation time, which means you can move on to the next job. When it comes to lower installed costs, this changes everything!



One-Gang 23.0 Cu. In.



| CAT. NO. | SIZE CU. IN. | MOUNTING MEANS | DESCRIPTION | DIMENSIONS (IN.) | STD. CTN. |
|----------|--------------|-----------------|-------------|--------------------|-----------|
| GO-23 | 23.0 | Grip-On Bracket | — | 3¼ L x 2¼ W x 2½ D | 30 |
| GO-23-FS | 23.0 | Grip-On Bracket | Fast-Set | 3¼ L x 2¼ W x 2½ D | 30 |

One-Gang Nail-On 18.0–22.5 Cu. In.



118-N



120-N



120-N-FS



122-N



122-N-FS



| CAT. NO. | SIZE CU. IN. | MOUNTING MEANS | DESCRIPTION | DIMENSIONS (IN.) | STD. CTN. |
|----------|--------------|-------------------|-------------|--------------------|-----------|
| 118-N | 18.0 | Angled Side Nails | — | 3¼ L x 2¼ W x 2½ D | 100 |
| 120-N | 20.3 | Angled Side Nails | — | 3¼ L x 2¼ W x 3⅜ D | 100 |
| 120-N-FS | 20.3 | Angled Side Nails | Fast-Set | 3¼ L x 2¼ W x 3⅜ D | 100 |
| 122-N | 22.5 | Angled Side Nails | — | 3¼ L x 2¼ W x 3⅜ D | 100 |
| 122-N-FS | 22.5 | Angled Side Nails | Fast-Set | 3¼ L x 2¼ W x 3⅜ D | 100 |

Polycarbonate Boxes

New Work Boxes

One-Gang Brackets 18.0–22.5 Cu. In.

| CAT. NO. | SIZE CU. IN. | MOUNTING MEANS | DESCRIPTION | DIMENSIONS (IN.) | STD. CTN. |
|----------|--------------|--|--------------------|--------------------|-----------|
| 118-LB | 18.0 | Molded Side Bracket for Wood/Steel Studs | — | 3¾ L x 2¼ W x 2¾ D | 100 |
| 118-LBP | 18.0 | Molded Side Bracket for Wood/Steel Studs | POSI-SET® Fast-Set | 3¾ L x 2¼ W x 2¾ D | 100 |
| 120-LB | 20.3 | Molded Side Bracket for Wood/Steel Studs | — | 3¾ L x 2¼ W x 3⅝ D | 100 |
| 120-LBP | 20.3 | Molded Side Bracket for Wood/Steel Studs | POSI-SET® Fast-Set | 3¾ L x 2¼ W x 3⅝ D | 100 |
| 122-LB | 22.5 | Molded Side Bracket for Wood/Steel Studs | — | 3¾ L x 2¼ W x 3⅝ D | 100 |
| 122-LBP | 22.5 | Molded Side Bracket for Wood/Steel Studs | POSI-SET® Fast-Set | 3¾ L x 2¼ W x 3⅝ D | 100 |



118-LB



118-LBP



120-LB



120-LBP



122-LB



122-LBP

Two-Gang Nail-On 34.0 Cu. In.

| CAT. NO. | SIZE CU. IN. | MOUNTING MEANS | DESCRIPTION | DIMENSIONS (IN.) | STD. CTN. |
|----------|--------------|-------------------|--------------------------|-------------------|-----------|
| 234-N | 34.0 | Angled Side Rails | POSI-WEDGE® Cable Clamps | 3¾ L x 4 W x 3⅝ D | 50 |
| 234-NP | 34.0 | Angled Side Rails | POSI-WEDGE® POSI-SET® | 3¾ L x 4 W x 3⅝ D | 50 |



234-N



234-NP

Two-Gang Bracket 34.0 Cu. In.

| CAT. NO. | SIZE CU. IN. | MOUNTING MEANS | DESCRIPTION | DIMENSIONS (IN.) | STD. CTN. |
|----------|--------------|---|--------------------------|-------------------|-----------|
| 234-LB | 34.0 | Steel Side Bracket for Wood/Steel Studs | POSI-WEDGE® Cable Clamps | 3¾ L x 4 W x 3⅝ D | 50 |



234-LB

Boxes & Covers — Carlton® Non-Metallic Boxes

Polycarbonate Boxes

New Work Boxes

Boxes & Covers — Carlton® Non-Metallic Boxes

Three-Gang Nail-On 45.0 Cu. In.

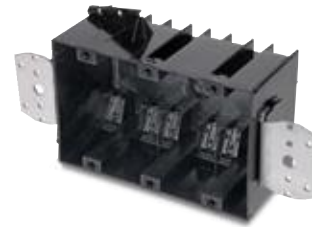
| CAT. NO. | SIZE CU. IN. | MOUNTING MEANS | DESCRIPTION | DIMENSIONS (IN.) | STD. CTN. |
|----------|--------------|---|--------------------------|--------------------|-----------|
| 345-N | 45.0 | Angled Side Nails & Steel Side Brackets | POSI-WEDGE® Cable Clamps | 3¾ L x 5¼ W x 2¼ D | 20 |



345-N

Three-Gang Bracket 45 Cu. In.

| CAT. NO. | SIZE CU. IN. | MOUNTING MEANS | DESCRIPTION | DIMENSIONS (IN.) | STD. CTN. |
|----------|--------------|---|--------------------------|--------------------|-----------|
| 345-LB | 45.0 | Steel Side Bracket for Wood/Steel Studs | POSI-WEDGE® Cable Clamps | 3¾ L x 5¼ W x 2¼ D | 25 |



345-LB

Four-Gang Nail-On 60 Cu. In.

| CAT. NO. | SIZE CU. IN. | MOUNTING MEANS | DESCRIPTION | DIMENSIONS (IN.) | STD. CTN. |
|--------------|--------------|----------------------------------|--------------------------|--------------------|-----------|
| 460-SB | 60.0 | Angled Side Nails & Back Bracket | POSI-WEDGE® Cable Clamps | 3¾ L x 7¼ W x 2¼ D | 10 |
| 460-SB-24 ** | 60.0 | Angled Side Nails & Back Bracket | POSI-WEDGE® Cable Clamps | 3¾ L x 7¼ W x 2¼ D | 10 |

• 24" adjustable bracket.

* Not UL Classified for fire wall and/or fire ceiling



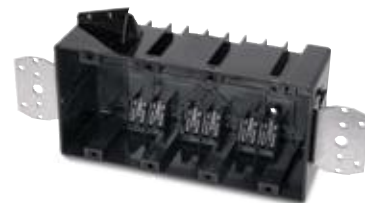
460-SB

460-SB-24

Four-Gang Bracket 60 Cu. In.

| CAT. NO. | SIZE CU. IN. | MOUNTING MEANS | DESCRIPTION | DIMENSIONS (IN.) | STD. CTN. |
|----------|--------------|---------------------|--------------------------|--------------------|-----------|
| 460-LB | 60.0 | Steel Side Brackets | POSI-WEDGE® Cable Clamps | 3¾ L x 7¼ W x 2¼ D | 8 |

* Not UL Classified for fire wall and/or fire ceiling



460-LB

Polycarbonate Boxes

New Work Box

4" Square Boxes 32.0 Cu. In.



| CAT. NO. | SIZE CU. IN. | MOUNTING MEANS | DESCRIPTION | DIMENSIONS (IN.) | STD. CTN. |
|----------|-----------------|-------------------|-----------------------------|--|--------------|
| 4S-32-N | 32.0 | Angled Side Nails | POSI-WEDGE® Cable Clamps | 4 L x 4 W x 3 ³ / ₁₆ D | 50 |



4S-32-N

Old Work Boxes

One-Gang 14.0 Cu. In.



| CAT. NO. | SIZE CU. IN. | MOUNTING MEANS | DESCRIPTION | DIMENSIONS (IN.) | STD. CTN. |
|----------|-----------------|--------------------|-------------|---|--------------|
| 114-OW | 14.0 | Swing-Ear Brackets | — | 3 ³ / ₄ L x 2 ¹ / ₄ W x 3 D | 50 |

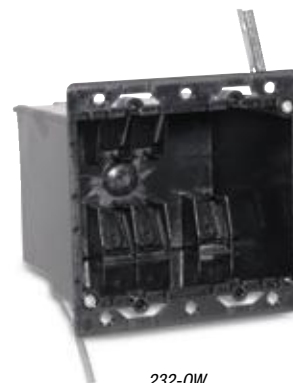


114-OW

Two-Gang 32.0 Cu. In.



| CAT. NO. | SIZE CU. IN. | MOUNTING MEANS | DESCRIPTION | DIMENSIONS (IN.) | STD. CTN. |
|----------|-----------------|-----------------------|-----------------------------|---|--------------|
| 232-OW | 32.0 | Swing-Ear Brackets | POSI-WEDGE® Cable Clamps | 3 ³ / ₈ L x 4 ¹ / ₁₆ W x 3 ³ / ₁₆ D | 50 |



232-OW

Boxes & Covers — Carlton® Non-Metallic Boxes

Polycarbonate Boxes

Energy-Efficient Vapor Barrier Boxes

Vapor-barrier boxes are designed to meet the energy-efficiency requirements of modern homes. They feature a drywall flange covered with a foam gasket and additional gaskets over the cable entry points. These gaskets provide a vapor-tight seal, preventing the free flow of air through the box. This helps control heating costs in the winter and cooling costs in the summer.

- High-strength polycarbonate construction — will not shatter when cold or distort in heat
- V-clamps provide self-clamping cable entry (multi-gang and fan/fixture box)
- ½" offset flange to ensure a flush fit in ½" drywall
- Angled side nails for rapid installation
- Pre-drilled flanges for additional mounting options



FN-23



FN-236-V



FN-354-V



FN-460-V

One-, Two-, Three- and Four-Gang



| CAT. NO. | SIZE CU. IN. | MOUNTING MEANS | DESCRIPTION | DIMENSIONS (IN.) | STD. CTN. |
|-----------|--------------|-------------------|---------------|--------------------|-----------|
| FN-23 | 22.5 | Angled Side Nails | Vapor Barrier | 3½ L x 2¼ W x 3⅝ D | 50 |
| FN-236-V | 36.0 | Angled Side Nails | Vapor Barrier | 3½ x 4 x 3¼ D | 50 |
| FN-354-V | 54.0 | Angled Side Nails | Vapor Barrier | 3½ x 5⅝ x 3¼ D | 20 |
| FN-460-V* | 60.0 | Angled Side Nails | Vapor Barrier | 3½ x 7½ x 2¼ D | 10 |

*Not UL Classified for fire wall and/or fire ceiling.

Ceiling Fixture Box 26.0 Cu. In.



| CAT. NO. | SIZE CU. IN. | MOUNTING MEANS | DESCRIPTION | DIMENSIONS (IN.) | STD. CTN. |
|------------|--------------|-------------------|-------------|------------------|-----------|
| FN-426-C-V | 26.0 | Angled Side Nails | — | 4 L x 4 W x 2¼ D | 50 |

Listed for fixture support up to 50 lbs.



FN-426-C-V

Ceiling Fan/Fixture 26.0 Cu. In.



| CAT. NO. | SIZE CU. IN. | MOUNTING MEANS | DESCRIPTION | DIMENSIONS (IN.) | STD. CTN. |
|----------|--------------|----------------|-------------|------------------|-----------|
| FN-CFB | 26.0 | #3 Bracket | — | 4 L x 4 W x 2¼ D | 50 |

Listed for fan support up to 35 lbs. and fixture support up to 50 lbs.



FN-CFB

Voltage Partition



| CAT. NO. | DESCRIPTION | STD. CTN. |
|----------|---|-----------|
| FNP | Voltage Partition for NG & FN Series Multi-Gang Boxes | 50 |

Polycarbonate Boxes

Saddle-Type Fan/Fixture 16.0 Cu. In.



| CAT. NO. | SIZE CU. IN. | MOUNTING MEANS | DESCRIPTION | DIMENSIONS (IN.) | STD. CTN. |
|----------|-----------------|----------------|---------------------|--|--------------|
| CFB-16-F | 16.0 | Center Screw | Ceiling Fan/Fixture | 4 L x 4 W x 3 ³ / ₁₆ D | 50 |

Listed for fan support up to 70 lbs. and fixture support up to 70 lbs.



CFB-16-F

Universal Flanged Nail-On Boxes



Two-, Three- and Four-Gang

| CAT. NO. | SIZE CU. IN. | MOUNTING MEANS | DESCRIPTION | DIMENSIONS (IN.) | STD. CTN. |
|-------------|-----------------|-------------------|-------------|---|--------------|
| NG-236-V • | 36.0 | Angled Side Nails | 2-Gang Wall | 3 ¹ / ₂ L x 4 W x 3 ¹ / ₄ D | 50 |
| NG-354-V • | 54.0 | Angled Side Nails | 3-Gang Wall | 3 ¹ / ₂ L x 5 ³ / ₄ W x 3 ¹ / ₄ D | 20 |
| NG-460-V •* | 60.0 | Angled Side Nails | 4-Gang Wall | 3 ¹ / ₂ L x 7 ¹ / ₂ W x 2 ³ / ₄ D | 10 |

• NG Boxes have 1/8" offset wallboard flange and V-type cable entry.

* Not UL Classified for fire wall and/or fire ceiling.



NG-236-V



NG-354-V



NG-460-V

Voltage Partition



| CAT. NO. | DESCRIPTION | STD. CTN. |
|----------|---|--------------|
| FNP | Voltage Partition for NG & FN Series Multi-Gang Boxes | 50 |

Polycarbonate Boxes

Ceiling Boxes

All ceiling boxes are produced from a high heat-resistant material developed specifically for fixture support applications.

- Meets NEMA OS-2
- UL Listed to UL 514C



N-321-GC



N-321-C



3½" 20.5 Cu. In.

| CAT. NO. | SIZE CU. IN. | MOUNTING MEANS | DESCRIPTION | DIMENSIONS (IN.) | STD. CTN. |
|------------|--------------|-------------------|--|------------------|-----------|
| N-321-C • | 20.5 | Angled Side Nails | Molded Fast Clamps | 3½ Dia. x 3¼ D | 50 |
| N-321-GC • | 20.5 | Angled Side Nails | Molded Fast Clamps, Ground Strap Installed | 3½ Dia. x 3¼ D | 50 |

- Listed for fixture support up to 50 lbs.



N-423-C-V



N-423-GC-V



4" 22.5 Cu. In.

| CAT. NO. | SIZE CU. IN. | MOUNTING MEANS | DESCRIPTION | DIMENSIONS (IN.) | STD. CTN. |
|--------------|--------------|-------------------|--------------------|------------------|-----------|
| N-423-C-V • | 22.5 | Angled Side Nails | Molded V-Clamps | 4 Dia. x 2½ D | 50 |
| N-423-GC-V • | 22.5 | Angled Side Nails | Molded Fast Clamps | 4 Dia. x 2½ D | 50 |

- Listed for fixture support up to 50 lbs.

Polycarbonate Boxes

Boxes & Covers — Carlton® Non-Metallic Boxes



B518P-UPC



3/0 18 Cu. In.

| CAT. NO. | SIZE CU. IN. | MOUNTING MEANS | DESCRIPTION | DIMENSIONS (IN.) | STD. CTN. |
|-------------|--------------|----------------|-------------------------------|------------------|-----------|
| B518A-UPC • | 18.0 | Captive Nails | — | 3 Dia. x 2¾ D | 75 |
| B518P-UPC • | 18.0 | Captive Nails | Ground Lug and Screw Attached | 3 Dia. x 2¾ D | 75 |

• Listed for fixture support up to 50 lbs.



B520A-UPC



B620L-UPC



B520P-UPC



B720R-SHK
35 lbs. maximum fan weight



3/0-4/0 Combination 20 Cu. In.

| CAT. NO. | SIZE CU. IN. | MOUNTING MEANS | DESCRIPTION | DIMENSIONS (IN.) | STD. CTN. |
|-------------|--------------|-----------------|---|------------------|-----------|
| B520A-UPC • | 20.0 | Captive Nails | Ground Lug and Screw Attached Fixture Spacing for 2¾" and 3" | 4 Dia. x 2¼ D | 75 |
| B520P-UPC • | 20.0 | Captive Nails | Ground Lug and Screw Attached | 4 Dia. x 2¼ D | 75 |
| B620L-UPC • | 20.0 | Metal L Bracket | Fixture Spacing for 2¾" and 3½" | 4 Dia. x 2¼ D | 100 |
| B720R-SHK • | 20.0 | Mounting Screws | — | 4 Dia. x 2¼ D | 18 |

• Listed for fixture support up to 50 lbs.

Polycarbonate Boxes

Ceiling Boxes with Bar Hanger

- Meets NEMA OS-2



N-321-C-94



N-321-GC-94



N-321-C-95



N-321-GC-95

3½" 20.5 Cu. In.



| CAT. NO. | SIZE CU. IN. | MOUNTING MEANS | DESCRIPTION | DIMENSIONS (IN.) | STD. CTN. |
|---------------|--------------|------------------------------------|--|------------------|-----------|
| N-321-C-94 • | 20.5 | 16" Bar Hanger, 12¼" Min.–19" Max. | Molded Fast Clamps | 3½ Dia. x 3½ D | 50 |
| N-321-GC-94 • | 20.5 | 16" Bar Hanger, 12¼" Min.–19" Max. | Molded Fast Clamps, Ground Strap Installed | 3½ Dia. x 3½ D | 50 |
| N-321-C-95 • | 20.5 | 24" Bar Hanger, 16½" Min.–27" Max. | Molded Fast Clamps | 3½ Dia. x 3½ D | 50 |
| N-321-GC-95 • | 20.5 | 24" Bar Hanger, 16½" Min.–27" Max. | Molded Fast Clamps, Ground Strap Installed | 3½ Dia. x 3½ D | 50 |

- Listed for fixture support up to 50 lbs.



N-423-C-94-V



N-423-GC-94-V



N-423-C-95-V



N-423-GC-95-V

4" 22.5 Cu. In.



| CAT. NO. | SIZE CU. IN. | MOUNTING MEANS | DESCRIPTION | DIMENSIONS (IN.) | STD. CTN. |
|-----------------|--------------|------------------------------------|--|------------------|-----------|
| N-423-C-94-V • | 22.5 | 16" Bar Hanger, 12¼" Min.–19" Max. | Molded Fast Clamps | 4 Dia. x 2½ D | 50 |
| N-423-GC-94-V • | 22.5 | 16" Bar Hanger, 12¼" Min.–19" Max. | Molded Fast Clamps, Ground Strap Installed | 4 Dia. x 2½ D | 50 |
| N-423-C-95-V • | 22.5 | 24" Bar Hanger, 16½" Min.–27" Max. | Molded Fast Clamps | 4 Dia. x 2½ D | 50 |
| N-423-GC-95-V • | 22.5 | 24" Bar Hanger, 16½" Min.–27" Max. | Molded Fast Clamps, Ground Strap Installed | 4 Dia. x 2½ D | 50 |

- Listed for fixture support up to 50 lbs.

Polycarbonate Boxes

Boxes & Covers — Carlton® Non-Metallic Boxes



B620DC



B620HG-UPC



B620K



B620H-UPC



B620KG-UPC

3/0-4/0 Combination 20.0 Cu. In.



| CAT. NO. | SIZE CU. IN. | MOUNTING MEANS | DESCRIPTION | DIMENSIONS (IN.) | STD. CTN. |
|--------------|-----------------|---|---|------------------|--------------|
| B620DC • | 20.0 | 24" T-Grid Bar Hanger | Ceiling Box Fixture Spacing for 2¾" and 3½" | 4 Dia. x 2¼ D | 18 |
| B620HG-UPC • | 20.0 | 11.50"-14.50" Adjustable Bar Hanger Ground Lug and Screw Attached | Ceiling Box Fixture Spacing for 2¾" and 3½" | 4 Dia. x 2¼ D | 75 |
| B620H-UPC • | 20.0 | 11.50"-14.50" Adjustable Bar Hanger | Ceiling Box Fixture Spacing for 2¾" and 3½" | 4 Dia. x 2¼ D | 75 |
| B620K • | 20.0 | 14.38"-22.50" Adjustable Bar Hanger | Ceiling Box Fixture Spacing for 2¾" and 3½" | 4 Dia. x 2¼ D | 75 |
| B620KG-UPC • | 20.0 | 14.38"-22.50" Adjustable Bar Hanger Ground Lug and Screw Attached | Ceiling Box Fixture Spacing for 2¾" and 3½" | 4 Dia. x 2¼ D | 75 |

• Listed for fixture support up to 50 lbs.

Polycarbonate Boxes

Ceiling Boxes



3R-16-N



3R-16-NGP

3½" Nail-On 16.0 Cu. In.



| CAT. NO. | SIZE CU. IN. | MOUNTING MEANS | DESCRIPTION | DIMENSIONS (IN.) | STD. CTN. |
|-------------|--------------|----------------|--------------------------|------------------|-----------|
| 3R-16-N • | 16.0 | Angled Nails | POSI-WEDGE® Cable Clamps | 2¼ | 50 |
| 3R-16-NGP • | 16.0 | Angled Nails | POSI-WEDGE® Cable Clamps | 2¼ | 50 |

• Listed for fixture support up to 50 lbs.



3R-16-BH



3R-16-BHGP

3½" Ceiling Box with Bar Hanger 16.0 Cu. In.



| CAT. NO. | SIZE CU. IN. | MOUNTING MEANS | DESCRIPTION | DIMENSIONS (IN.) | STD. CTN. |
|--------------|--------------|-------------------------------|--------------------------|------------------|-----------|
| 3R-16-BH • | 16.0 | Adjustable 16"–24" Bar Hanger | POSI-WEDGE® Cable Clamps | 2¼ | 25 |
| 3R-16-BHGP • | 16.0 | Adjustable 16"–24" Bar Hanger | POSI-WEDGE® Cable Clamps | 2¼ | 25 |

• Listed for fixture support up to 50 lbs.

NEW!



3R-16-N-RED

3½" Fire Alarm Nail-On 16.0 Cu. In.



| CAT. NO. | SIZE CU. IN. | MOUNTING MEANS | DESCRIPTION | DIMENSIONS (IN.) | STD. CTN. |
|---------------|--------------|----------------|--------------------------|------------------|-----------|
| 3R-16-N-RED • | 16.0 | Angled Nails | POSI-WEDGE® Cable Clamps | 2¼ | 50 |

• Red ceiling box for fire alarm applications.

• Listed for fixture support up to 50 lbs.

Polycarbonate Boxes

Saddle-Type Ceiling Fan Boxes



CFB-12



Easy press-fit onto the joist. Integrally molded ribs grip the joist and stop the box from falling.



Just one hand is required to mount the box using the pre-located mounting screw.



CFB-16



Integrally molded cable V-clamps provide easy and secure clamping for non-metallic cables.



CFB-16 features 1/2" KOs in addition to V-clamps.

Saddle-Type Fan 12.0–16.0 Cu. In.



| CAT. NO. | SIZE CU. IN. | MOUNTING MEANS | DEPTH (IN.) | STD. CTN. |
|----------|--------------|---|-------------|-----------|
| CFB-12 • | 12.0 | Non-Metallic Saddle-Type Ceiling Fan Box with V-Clamps for Non-Metallic Sheathed Cable | 2 1/4 | 50 |
| CFB-16 • | 16.0 | Non-Metallic Saddle-Type Ceiling Fan Box with V-Clamps for Non-Metallic Sheathed Cable and Two 1/2" KOs | 2 1/4 | 50 |

• Listed for fan support up to 70 lbs. and fixture support up to 70 lbs.

Old Work

4" Round 18.0 Cu. In.



| CAT. NO. | SIZE CU. IN. | MOUNTING MEANS | DESCRIPTION | DIMENSIONS (IN.) | STD. CTN. |
|--------------|--------------|----------------|-------------|------------------|-----------|
| B618R-UPC • | 18.0 | Swing Clamps | — | 4 1/4 Dia. | 100 |
| B618RP-UPC • | 18.0 | Swing Clamps | Ground Lug | 4 1/4 Dia. | 100 |

• Not UL Classified for Fire Resistance or used for fixture support in the ceiling.



B618R-UPC