

CSA, ULI

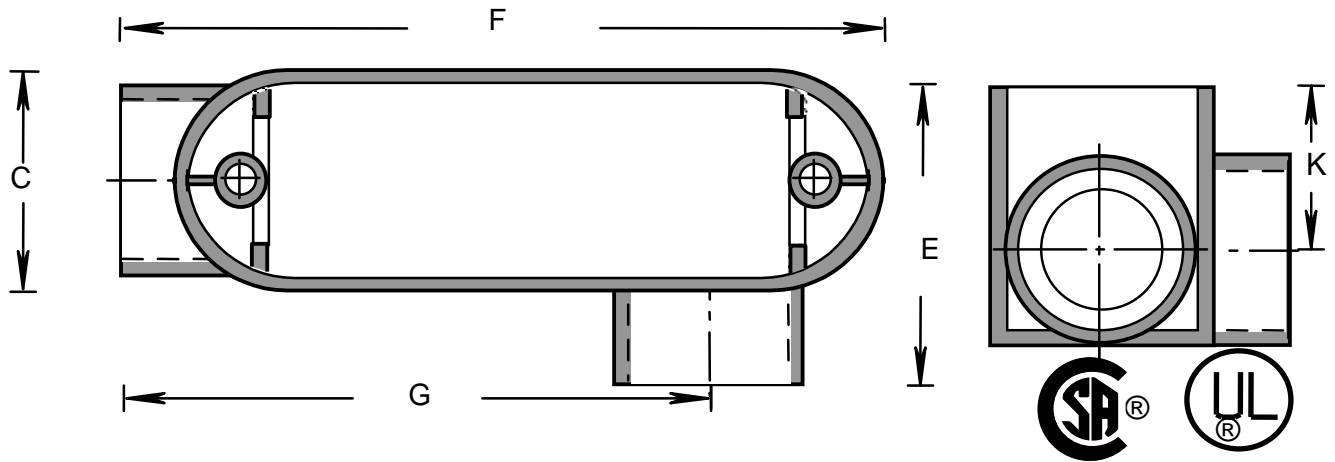
RIGID PVC CONDUIT FITTINGS - KRALOY

ISSUE DATE:
DATE D'EMISSION: 2004 05 15

TYPE "LL" ACCESS FITTINGS

SUPERCEDES:
REPLACE: 2001 06 30

2



| PRODUCT CODE | PART NUMBER | NOMINAL SIZE | | C | | E | | F | | G | |
|--------------|-------------|--------------|------|-------|------|-------|------|--------|------|--------|------|
| | | (in) | (mm) | (in) | (mm) | (in) | (mm) | (in) | (mm) | (in) | (mm) |
| 078152 | LL05 | 1/2 | 16 | 1.312 | 33 | 1.898 | 48 | 4.285 | 109 | 3.290 | 84 |
| 078153 | LL07 | 3/4 | 21 | 1.500 | 38 | 2.204 | 56 | 4.970 | 126 | 3.980 | 101 |
| 078154 | LL10 | 1 | 27 | 1.750 | 44 | 2.635 | 67 | 5.900 | 150 | 4.656 | 118 |
| 078155 | LL12 | 1 1/4 | 35 | 2.450 | 62 | 3.246 | 82 | 7.650 | 194 | 6.060 | 154 |
| 078156 | LL15 | 1 1/2 | 41 | 2.468 | 63 | 3.546 | 90 | 7.812 | 198 | 6.180 | 157 |
| 078157 | LL20 | 2 | 53 | 3.062 | 78 | 4.176 | 106 | 9.970 | 253 | 8.055 | 205 |
| 078158 | LL25 | 2 1/2 | 63 | 4.625 | 117 | 5.886 | 150 | 13.750 | 349 | 11.843 | 301 |
| 078159 | LL30 | 3 | 78 | 4.625 | 117 | 5.918 | 150 | 14.250 | 362 | 11.843 | 301 |
| 078160 | LL35 | 3 1/2 | 91 | 5.445 | 138 | 7.178 | 182 | 15.500 | 394 | 12.750 | 324 |
| 078161 | LL40 | 4 | 103 | 5.445 | 138 | 7.178 | 182 | 15.500 | 394 | 12.750 | 324 |
| 178149* | LL05 | 1/2 | 16 | 1.312 | 33 | 1.898 | 48 | 4.285 | 109 | 3.290 | 84 |
| 178150* | LL07 | 3/4 | 21 | 1.500 | 38 | 2.204 | 56 | 4.970 | 126 | 3.980 | 101 |
| 178151* | LL10 | 1 | 27 | 1.750 | 44 | 2.635 | 67 | 5.900 | 150 | 4.656 | 118 |

| PRODUCT CODE | PART NUMBER | NOMINAL SIZE | | K | |
|--------------|-------------|--------------|------|-------|------|
| | | (in) | (mm) | (in) | (mm) |
| 078152 | LL05 | 1/2 | 16 | 0.883 | 22 |
| 078153 | LL07 | 3/4 | 21 | 0.920 | 23 |
| 078154 | LL10 | 1 | 27 | 1.188 | 30 |
| 078155 | LL12 | 1 1/4 | 35 | 1.359 | 35 |
| 078156 | LL15 | 1 1/2 | 41 | 1.360 | 35 |
| 078157 | LL20 | 2 | 53 | 2.016 | 51 |
| 078158 | LL25 | 2 1/2 | 63 | 2.451 | 62 |
| 078159 | LL30 | 3 | 78 | 2.451 | 62 |
| 078160 | LL35 | 3 1/2 | 91 | 2.891 | 73 |
| 078161 | LL40 | 4 | 103 | 2.891 | 73 |
| 178149* | LL05 | 1/2 | 16 | 0.883 | 22 |
| 178150* | LL07 | 3/4 | 21 | 0.920 | 23 |
| 178151* | LL10 | 1 | 27 | 1.188 | 30 |

CSA, ULI

RIGID PVC CONDUIT FITTINGS - KRALOY

ISSUE DATE:
DATE D'EMISSION: 2004 05 15

TYPE "LL" ACCESS FITTINGS

SUPERCEDES:
REPLACE: 2001 06 30

2

| PRODUCT CODE | PART NUMBER | NOMINAL SIZE | | FILL VOLUME | | INSERT CODE | SCREW CODE | REDUCER CODE | COVER CODE | GASKET CODE |
|-----------------|----------------|--------------|------|-------------|---------|----------------|---------------|-----------------|---------------|----------------|
| | | (in) | (mm) | (cu.in) | (cu.cm) | | | | | |
| 078152 | LL05 | 1/2 | 16 | 4.2 | 68.9 | | 072563 | | 093106 | 072421 |
| 078153 | LL07 | 3/4 | 21 | 7.6 | 124.6 | | 072564 | | 093107 | 072422 |
| 078154 | LL10 | 1 | 27 | 13.1 | 214.8 | | 072564 | | 093108 | 072735 |
| 078155 | LL12 | 1 1/4 | 35 | 26.6 | 436.2 | | 072564 | | 093109 | 072736 |
| 078156 | LL15 | 1 1/2 | 41 | 39.0 | 639.6 | | 072564 | | 093110 | 072736 |
| 078157 | LL20 | 2 | 53 | 70.9 | 1162.8 | | 072412 | | 093111 | 072738 |
| 078158 | LL25 | 2 1/2 | 63 | 178.2 | 2922.5 | 072419 | 072420 | 097558 | 093112 | 072739 |
| 078159 | LL30 | 3 | 78 | 178.2 | 2922.5 | 072419 | 072420 | | 093113 | 072739 |
| 078160 | LL35 | 3 1/2 | 91 | 338.6 | 5553.0 | 072419 | 072420 | 097991 | 093113 | 072740 |
| 078161 | LL40 | 4 | 103 | 338.6 | 5553.0 | 072419 | 072420 | | 093114 | 072740 |
| 178149* | LL05 | 1/2 | 16 | 4.2 | 68.9 | | 072563 | | 093106 | 072421 |
| 178150* | LL07 | 3/4 | 21 | 7.6 | 124.6 | | 072564 | | 093107 | 072422 |
| 178151* | LL10 | 1 | 27 | 13.1 | 214.8 | | 072564 | | 093108 | 072735 |

* Bulk Packed for Pacific Circle

MAXIMUM WIRE FILL

| 1/2" + 3/4" + 1 " (12 + 21 + 27) | | 1 1/4 " (35) | 1 1/2 " (41) | 2 " (53) | 2 1/2 " (63) | 3 " (78) | 3 1/2 " (91) | 4 " (103) |
|---|---|-------------------|-------------------|-------------------|-------------------|-------------------|-------------------|-------------------|
| MAX. WIRE FILL #6 AWG CONDUCTORS OR SMALLER FOR 1": PULLING COMPOUND REQUIRED FOR #4 AWG | U | 2.720" (69.1) | 4.480" (113.8) | 5.750" (146.1) | 7.420" (188.5) | 7.420" (188.5) | 8.940" (227.1) | 7.940" (201.7) |
| | M | #2 | #1 /0 | #4 /0 | #300 | #300 | #350 | #350 |
| | D | 4.750" (120.7) | 5.500" (139.7) | 6.875" (174.6) | 7.750" (196.9) | 7.750" (196.9) | 9.500" (241.3) | 9.500" (241.3) |

U UL514 INVESTIGATION OF CONDUIT BODIES FOR THREE CONDUCTOR INSTALLATION WITH NO INVESTIGATION

M MAXIMUM WIRE FILL MARKED ON CONDUIT BODY

D DISTANCE BETWEEN HUBS ON CONDUIT BODY

Filename: KRALOY-07.doc
Directory: \\Bersrvbdc\bergen\QC MANUAL
Template: C:\Documents and Settings\joelau\Application
Data\Microsoft\Templates\Normal.dot
Title: SOCKET DIMENSION
Subject:
Author: joe lau
Keywords:
Comments:
Creation Date: 12/22/2000 9:54 AM
Change Number: 13
Last Saved On: 5/9/2004 11:40 AM
Last Saved By: Joe Lau
Total Editing Time: 47 Minutes
Last Printed On: 8/8/2005 12:37 PM
As of Last Complete Printing
Number of Pages: 2
Number of Words: 436 (approx.)
Number of Characters: 2,490 (approx.)

CSA, ULI

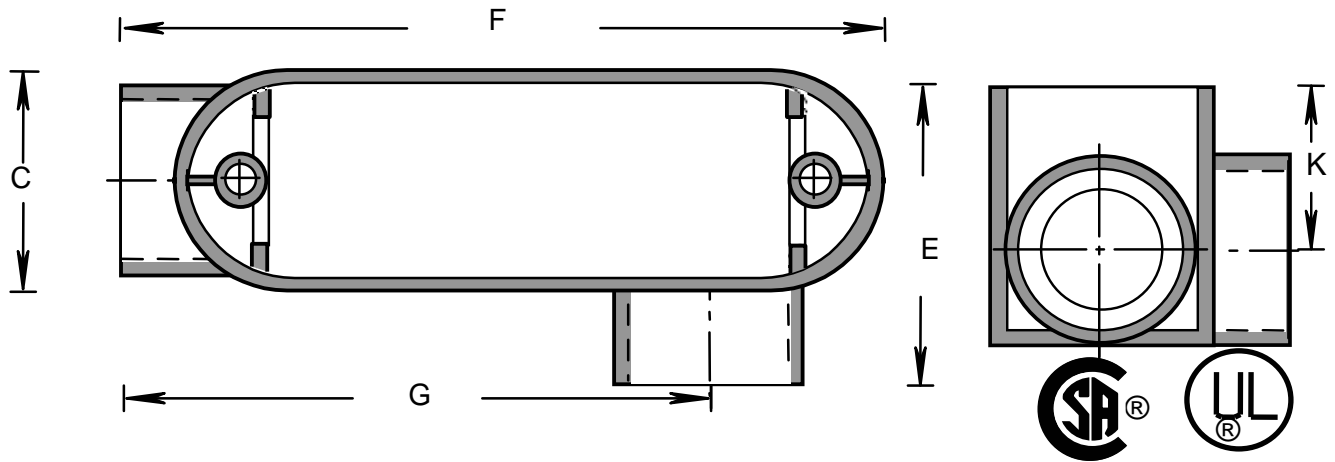
RIGID PVC CONDUIT FITTINGS - KRALOY

ISSUE DATE:
DATE D'EMISSION: 2004 05 15

TYPE "LL" ACCESS FITTINGS

SUPERCEDES:
REPLACE: 2001 06 30

2



| PRODUCT CODE | PART NUMBER | NOMINAL SIZE | | C | | E | | F | | G | |
|--------------|-------------|--------------|------|-------|------|-------|------|--------|------|--------|------|
| | | (in) | (mm) | (in) | (mm) | (in) | (mm) | (in) | (mm) | (in) | (mm) |
| 078152 | LL05 | 1/2 | 16 | 1.312 | 33 | 1.898 | 48 | 4.285 | 109 | 3.290 | 84 |
| 078153 | LL07 | 3/4 | 21 | 1.500 | 38 | 2.204 | 56 | 4.970 | 126 | 3.980 | 101 |
| 078154 | LL10 | 1 | 27 | 1.750 | 44 | 2.635 | 67 | 5.900 | 150 | 4.656 | 118 |
| 078155 | LL12 | 1 1/4 | 35 | 2.450 | 62 | 3.246 | 82 | 7.650 | 194 | 6.060 | 154 |
| 078156 | LL15 | 1 1/2 | 41 | 2.468 | 63 | 3.546 | 90 | 7.812 | 198 | 6.180 | 157 |
| 078157 | LL20 | 2 | 53 | 3.062 | 78 | 4.176 | 106 | 9.970 | 253 | 8.055 | 205 |
| 078158 | LL25 | 2 1/2 | 63 | 4.625 | 117 | 5.886 | 150 | 13.750 | 349 | 11.843 | 301 |
| 078159 | LL30 | 3 | 78 | 4.625 | 117 | 5.918 | 150 | 14.250 | 362 | 11.843 | 301 |
| 078160 | LL35 | 3 1/2 | 91 | 5.445 | 138 | 7.178 | 182 | 15.500 | 394 | 12.750 | 324 |
| 078161 | LL40 | 4 | 103 | 5.445 | 138 | 7.178 | 182 | 15.500 | 394 | 12.750 | 324 |
| 178149* | LL05 | 1/2 | 16 | 1.312 | 33 | 1.898 | 48 | 4.285 | 109 | 3.290 | 84 |
| 178150* | LL07 | 3/4 | 21 | 1.500 | 38 | 2.204 | 56 | 4.970 | 126 | 3.980 | 101 |
| 178151* | LL10 | 1 | 27 | 1.750 | 44 | 2.635 | 67 | 5.900 | 150 | 4.656 | 118 |

| PRODUCT CODE | PART NUMBER | NOMINAL SIZE | | K | |
|--------------|-------------|--------------|------|-------|------|
| | | (in) | (mm) | (in) | (mm) |
| 078152 | LL05 | 1/2 | 16 | 0.883 | 22 |
| 078153 | LL07 | 3/4 | 21 | 0.920 | 23 |
| 078154 | LL10 | 1 | 27 | 1.188 | 30 |
| 078155 | LL12 | 1 1/4 | 35 | 1.359 | 35 |
| 078156 | LL15 | 1 1/2 | 41 | 1.360 | 35 |
| 078157 | LL20 | 2 | 53 | 2.016 | 51 |
| 078158 | LL25 | 2 1/2 | 63 | 2.451 | 62 |
| 078159 | LL30 | 3 | 78 | 2.451 | 62 |
| 078160 | LL35 | 3 1/2 | 91 | 2.891 | 73 |
| 078161 | LL40 | 4 | 103 | 2.891 | 73 |
| 178149* | LL05 | 1/2 | 16 | 0.883 | 22 |
| 178150* | LL07 | 3/4 | 21 | 0.920 | 23 |
| 178151* | LL10 | 1 | 27 | 1.188 | 30 |

CSA, ULI

RIGID PVC CONDUIT FITTINGS - KRALOY

ISSUE DATE:
DATE D'EMISSION: 2004 05 15

TYPE "LL" ACCESS FITTINGS

SUPERCEDES:
REPLACE: 2001 06 30

2

| PRODUCT CODE | PART NUMBER | NOMINAL SIZE | | FILL VOLUME | | INSERT CODE | SCREW CODE | REDUCER CODE | COVER CODE | GASKET CODE |
|-----------------|----------------|--------------|------|-------------|---------|----------------|---------------|-----------------|---------------|----------------|
| | | (in) | (mm) | (cu.in) | (cu.cm) | | | | | |
| 078152 | LL05 | 1/2 | 16 | 4.2 | 68.9 | | 072563 | | 093106 | 072421 |
| 078153 | LL07 | 3/4 | 21 | 7.6 | 124.6 | | 072564 | | 093107 | 072422 |
| 078154 | LL10 | 1 | 27 | 13.1 | 214.8 | | 072564 | | 093108 | 072735 |
| 078155 | LL12 | 1 1/4 | 35 | 26.6 | 436.2 | | 072564 | | 093109 | 072736 |
| 078156 | LL15 | 1 1/2 | 41 | 39.0 | 639.6 | | 072564 | | 093110 | 072736 |
| 078157 | LL20 | 2 | 53 | 70.9 | 1162.8 | | 072412 | | 093111 | 072738 |
| 078158 | LL25 | 2 1/2 | 63 | 178.2 | 2922.5 | 072419 | 072420 | 097558 | 093112 | 072739 |
| 078159 | LL30 | 3 | 78 | 178.2 | 2922.5 | 072419 | 072420 | | 093113 | 072739 |
| 078160 | LL35 | 3 1/2 | 91 | 338.6 | 5553.0 | 072419 | 072420 | 097991 | 093113 | 072740 |
| 078161 | LL40 | 4 | 103 | 338.6 | 5553.0 | 072419 | 072420 | | 093114 | 072740 |
| 178149* | LL05 | 1/2 | 16 | 4.2 | 68.9 | | 072563 | | 093106 | 072421 |
| 178150* | LL07 | 3/4 | 21 | 7.6 | 124.6 | | 072564 | | 093107 | 072422 |
| 178151* | LL10 | 1 | 27 | 13.1 | 214.8 | | 072564 | | 093108 | 072735 |

* Bulk Packed for Pacific Circle

MAXIMUM WIRE FILL

| 1/2" + 3/4" + 1 " (12 + 21 + 27) | | 1 1/4 " (35) | 1 1/2 " (41) | 2 " (53) | 2 1/2 " (63) | 3 " (78) | 3 1/2 " (91) | 4 " (103) |
|---|---|-------------------|-------------------|-------------------|-------------------|-------------------|-------------------|-------------------|
| MAX. WIRE FILL #6 AWG CONDUCTORS OR SMALLER FOR 1": PULLING COMPOUND REQUIRED FOR #4 AWG | U | 2.720" (69.1) | 4.480" (113.8) | 5.750" (146.1) | 7.420" (188.5) | 7.420" (188.5) | 8.940" (227.1) | 7.940" (201.7) |
| | M | #2 | #1 /0 | #4 /0 | #300 | #300 | #350 | #350 |
| | D | 4.750" (120.7) | 5.500" (139.7) | 6.875" (174.6) | 7.750" (196.9) | 7.750" (196.9) | 9.500" (241.3) | 9.500" (241.3) |

U UL514 INVESTIGATION OF CONDUIT BODIES FOR THREE CONDUCTOR INSTALLATION WITH NO INVESTIGATION

M MAXIMUM WIRE FILL MARKED ON CONDUIT BODY

D DISTANCE BETWEEN HUBS ON CONDUIT BODY

Filename: KRALOY-07.doc
Directory: \\Bersrvbdc\bergen\QC MANUAL
Template: C:\Documents and Settings\joelau\Application
Data\Microsoft\Templates\Normal.dot
Title: SOCKET DIMENSION
Subject:
Author: joe lau
Keywords:
Comments:
Creation Date: 12/22/2000 9:54 AM
Change Number: 13
Last Saved On: 5/9/2004 11:40 AM
Last Saved By: Joe Lau
Total Editing Time: 47 Minutes
Last Printed On: 8/8/2005 12:37 PM
As of Last Complete Printing
Number of Pages: 2
Number of Words: 436 (approx.)
Number of Characters: 2,490 (approx.)