

CSA, ULI

RIGID PVC CONDUIT FITTINGS - KRALOY

FEMALE ADAPTER

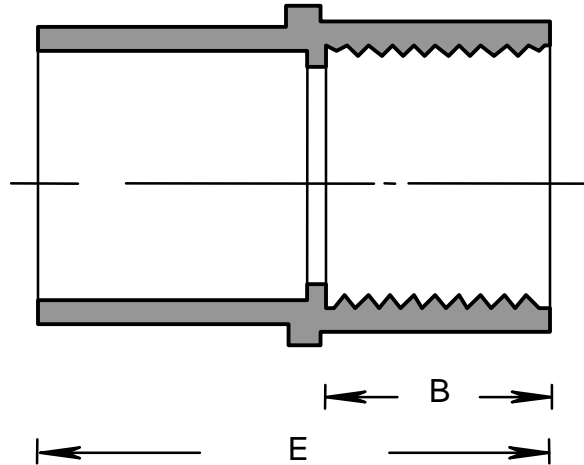
ISSUE DATE:

DATE D'EMISSION: 2007 08 30

SUPERCEDES:

REPLACE: 2006 08 30

5



PRODUCT CODE	PART NUMBER	NOMINAL SIZE		E		B	
		(in)	(mm)	(in)	(mm)	(in)	(mm)
078070	FA05	1/2	16	1.400	36	0.700	18
078071	FA07	3/4	21	1.550	39	0.765	19
078072	FA10	1	27	2.000	51	1.000	25
078073	FA12	1 1/4	35	2.065	52	1.000	25
078074	FA15	1 1/2	41	2.185	55	1.000	25
078075	FA20	2	53	2.260	57	1.000	25
078076	FA25	2 1/2	63	2.290	58	1.000	25
078077	FA30	3	78	2.950	75	1.145	29
078078	FA35	3 1/2	91	4.100	104	1.800	46
078079	FA40	4	103	3.120	79	1.150	29
078080	FA50	5	129	3.750	95	1.520	39
078081	FA60	6	155	4.062	103	1.500	38
178035*	FA12	1 1/4	35	2.065	52	1.000	25
178037*	FA20	2	53	2.260	57	1.000	25
178145*	FA25	2 1/2	63	2.290	58	1.000	25

NPT TAPPED THREAD FOR ALL FEMALE ADAPTERS

* For Pacific Circle

CSA, ULI

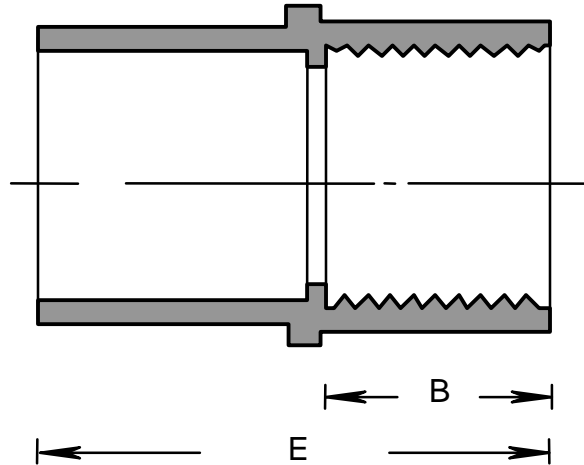
RIGID PVC CONDUIT FITTINGS - KRALOY

FEMALE ADAPTER

ISSUE DATE:
DATE D'EMISSION: 2007 08 30

SUPERCEDES:
REPLACE: 2006 08 30

5



PRODUCT CODE	PART NUMBER	NOMINAL SIZE		E		B	
		(in)	(mm)	(in)	(mm)	(in)	(mm)
078070	FA05	1/2	16	1.400	36	0.700	18
078071	FA07	3/4	21	1.550	39	0.765	19
078072	FA10	1	27	2.000	51	1.000	25
078073	FA12	1 1/4	35	2.065	52	1.000	25
078074	FA15	1 1/2	41	2.185	55	1.000	25
078075	FA20	2	53	2.260	57	1.000	25
078076	FA25	2 1/2	63	2.290	58	1.000	25
078077	FA30	3	78	2.950	75	1.145	29
078078	FA35	3 1/2	91	4.100	104	1.800	46
078079	FA40	4	103	3.120	79	1.150	29
078080	FA50	5	129	3.750	95	1.520	39
078081	FA60	6	155	4.062	103	1.500	38
178035*	FA12	1 1/4	35	2.065	52	1.000	25
178037*	FA20	2	53	2.260	57	1.000	25
178145*	FA25	2 1/2	63	2.290	58	1.000	25

NPT TAPPED THREAD FOR ALL FEMALE ADAPTERS

* For Pacific Circle